

For Lease Class A Office Space

2800 CLEVELAND AVENUE, SANTA ROSA, CALIFORNIA

±2,871 RSF AND ±5,073 RSF

\$1.95/RSF/MONTH, FULL SERVICE



NEWMARK

Barry Palma, CCIM

707-583-8410
barry.palma@nmrk.com
CA RE Lic. #00901364

Ron Reinking

707-583-8423
ron.reinking@nmrk.com
CA RE Lic. #00931004

PROPERTY HIGHLIGHTS

2800 CLEVELAND AVENUE, SANTA ROSA, CA

RENTAL RATE

\$1.95/RSF/Month, Full Service (Excluding Janitorial)

SUITE A ±2,871 RSF

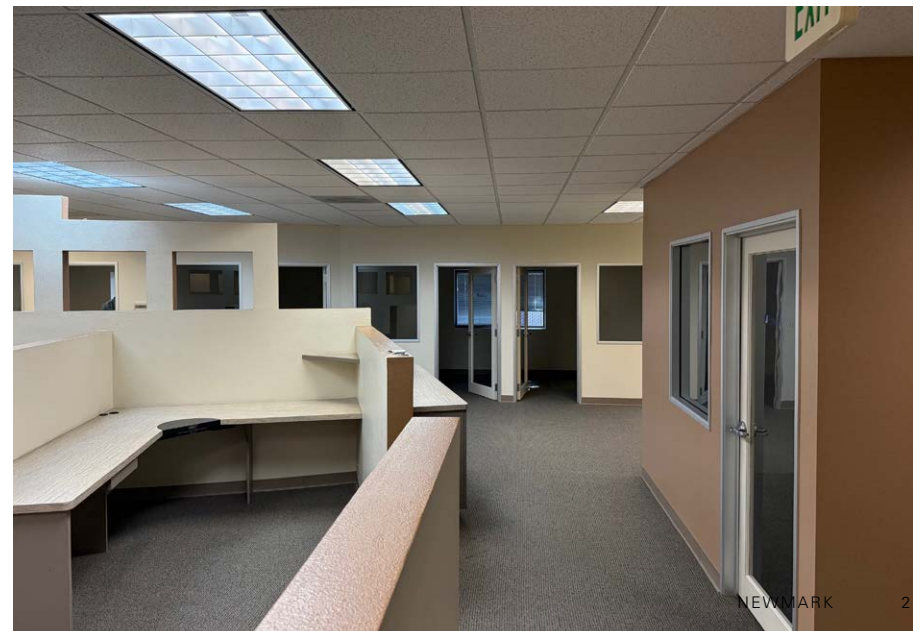
This suite is a beautifully designed office which is currently being occupied as a medical office with sinks in 4 treatment rooms, laboratory, 3 consulting offices, reception, waiting area, break room and storage area. The restrooms are shared with adjacent tenant. The flooring is Luxury vinyl tile and parking is outside front door.

SUITE D ±5,073 RSF

This is a is a very efficient professional office space with 10 Private Offices, conference room, 12 work stations, It room, break room with room for a table, multiple storage areas including a large storage room.

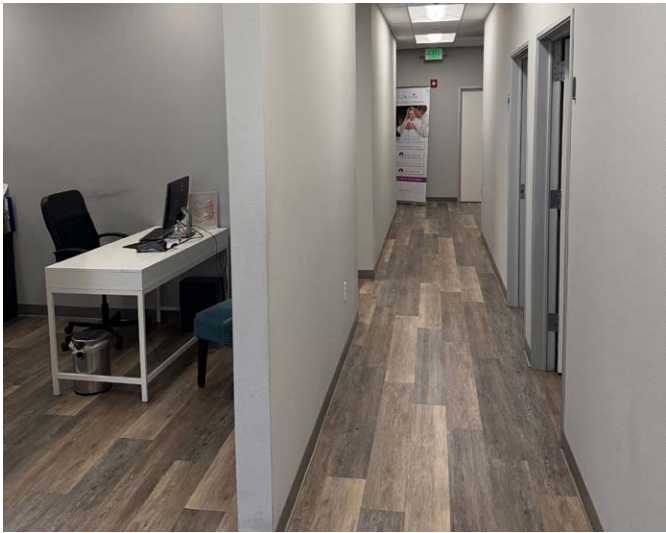
PROPERTY FEATURES

- Ready for immediate occupancy with built out private offices and attractive tenant improvements
- Monument Sign on Cleveland Avenue
- On-site parking near front door
- Easy ingress and egress off Cleveland Avenue
- Quality property management



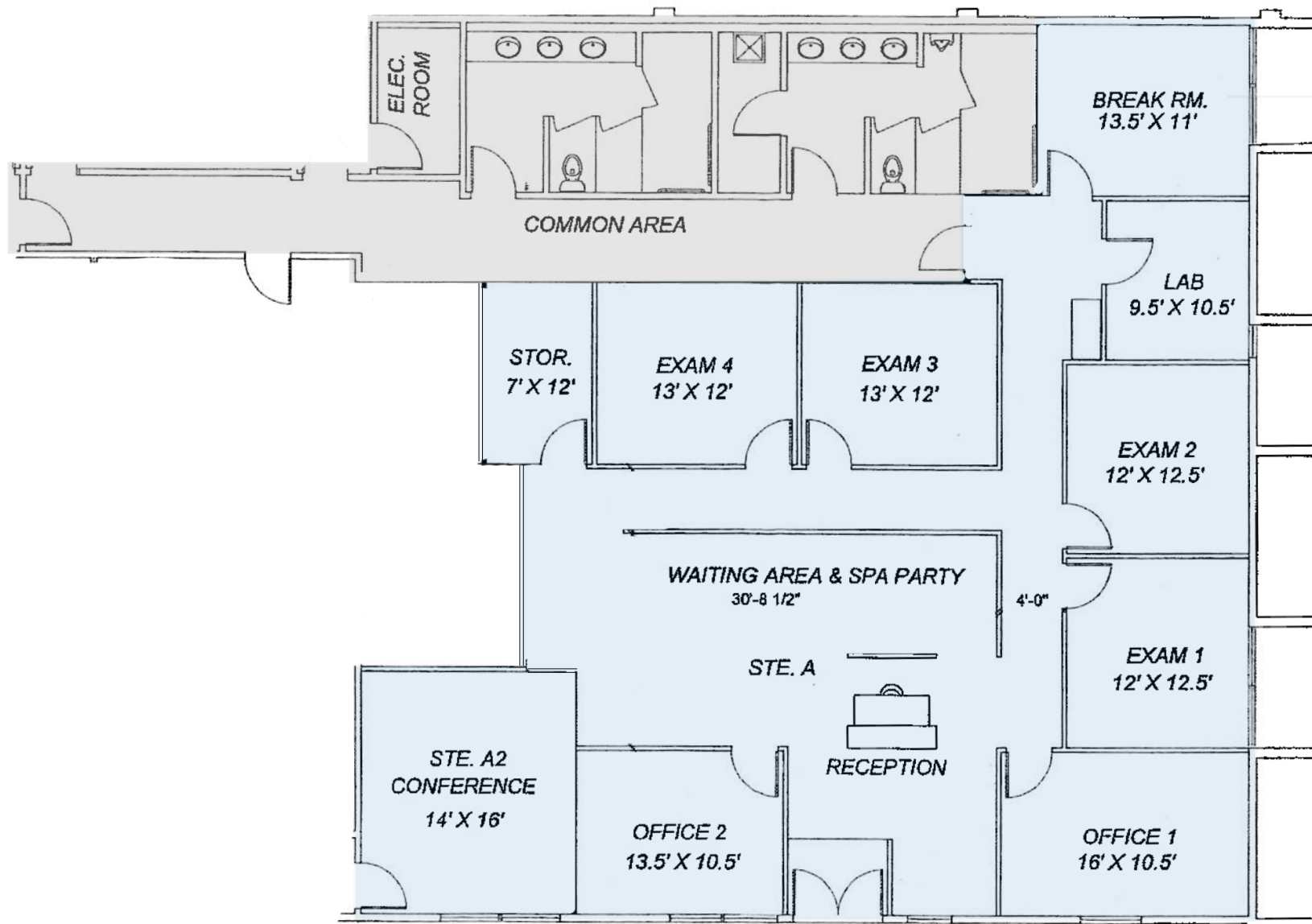
SUITE A - PHOTO GALLERY

2800 CLEVELAND AVENUE, SANTA ROSA, CA

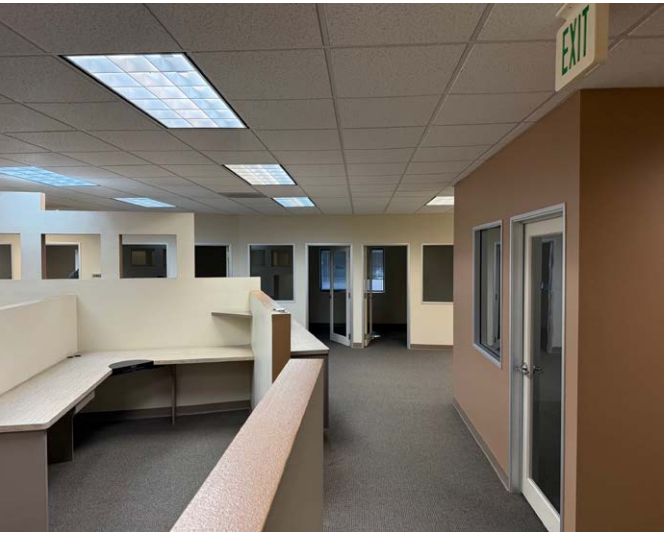


SUITE A - FLOOR PLAN

2800 CLEVELAND AVENUE, SANTA ROSA, CA

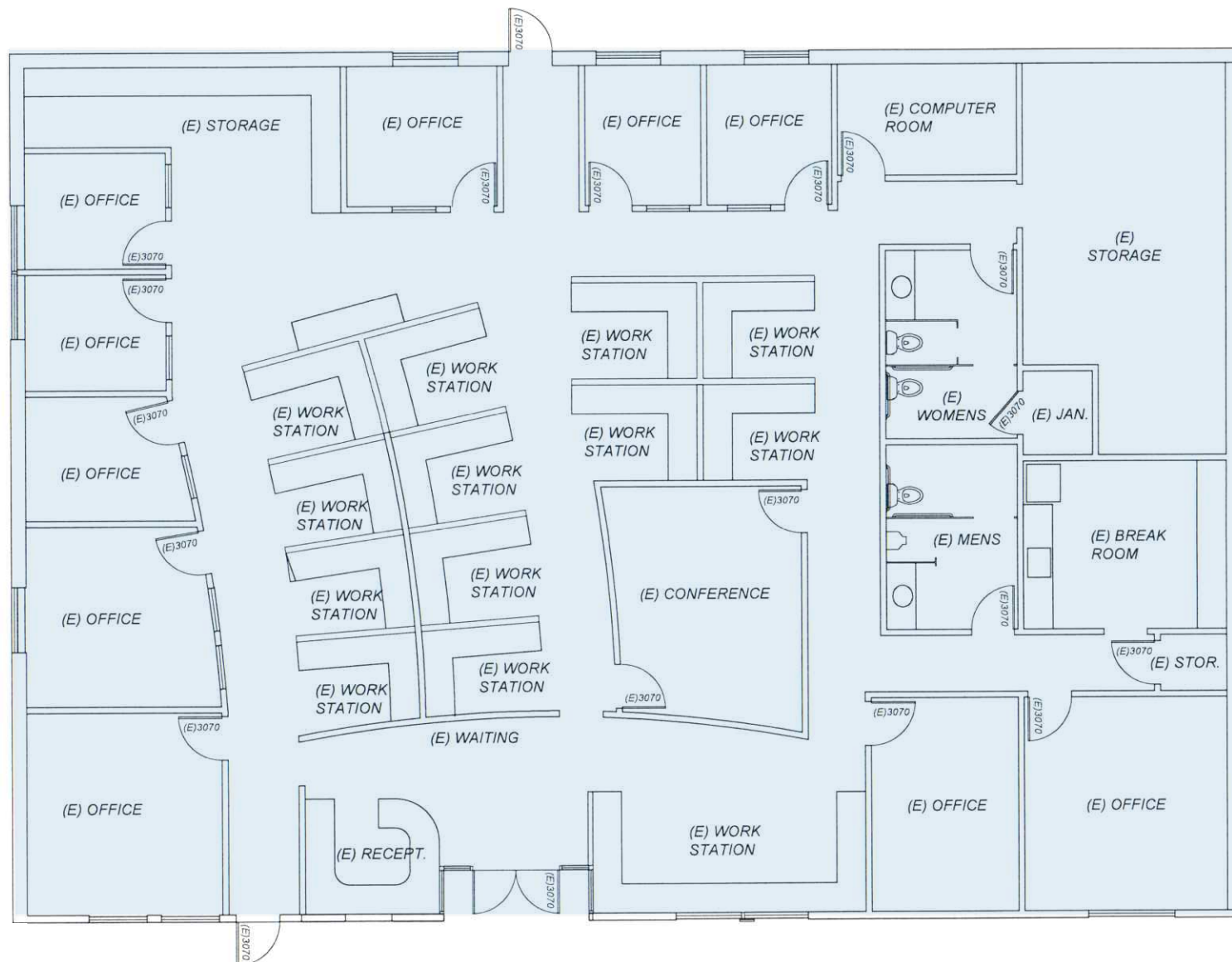


Floor plan not to scale. Measurements are approximate.



SUITE D - FLOOR PLAN

2800 CLEVELAND AVENUE, SANTA ROSA, CA



Floor plan not to scale. Measurements are approximate.

LOCATION MAP

2800 CLEVELAND AVENUE, SANTA ROSA, CA



DEMOGRAPHICS 2025			
	1 MILE	3 MILES	5 MILES
POPULATION	5,640	16,813	66,036
AVG HH INCOME	\$121,013	\$131,959	122,292
DAYTIME EMPLOYEES	4,957	9,554	24,790

AVERAGE DAILY TRAFFIC COUNT	
HIGHWAY-101 @ STEELE LANE S.	123,000
CLEVELAND AVE E @ GUERNEVILLE RD	32,547
CLEVELAND AVE @ TERRY LN	14,077

2800 Cleveland Avenue
Santa Rosa, California

Exclusive Agents:

Barry Palma, CCIM

707-583-8410
barry.palma@nmrk.com
CA RE Lic. #00901364

Ron Reinking

707-583-8423
ron.reinking@nmrk.com
CA RE Lic. #00931004

1101 Fifth Avenue
Suite 370
San Rafael, CA 94901
t 707-583-8400

The distributor of this communication is performing acts for which a real estate license is required. The information contained herein has been obtained from sources deemed reliable but has not been verified and no guarantee, warranty or representation, either express or implied, is made with respect to such information. Terms of sale or lease and availability are subject to change or withdrawal without notice. Last updated: June 20, 2025 1:10 PM

nmrk.com

NEWMARK