

Colliers



For Sale or Lease

± 388 AC

US Hwy 281 & New Carmen Ave
Brownsville, TX 78520

Jon Lindenberger, CCIM, SIOR

Principal & Executive Vice President
D 713 830 2163
C 713 252 4011
jon.lindenberger@colliers.com

 Google Map

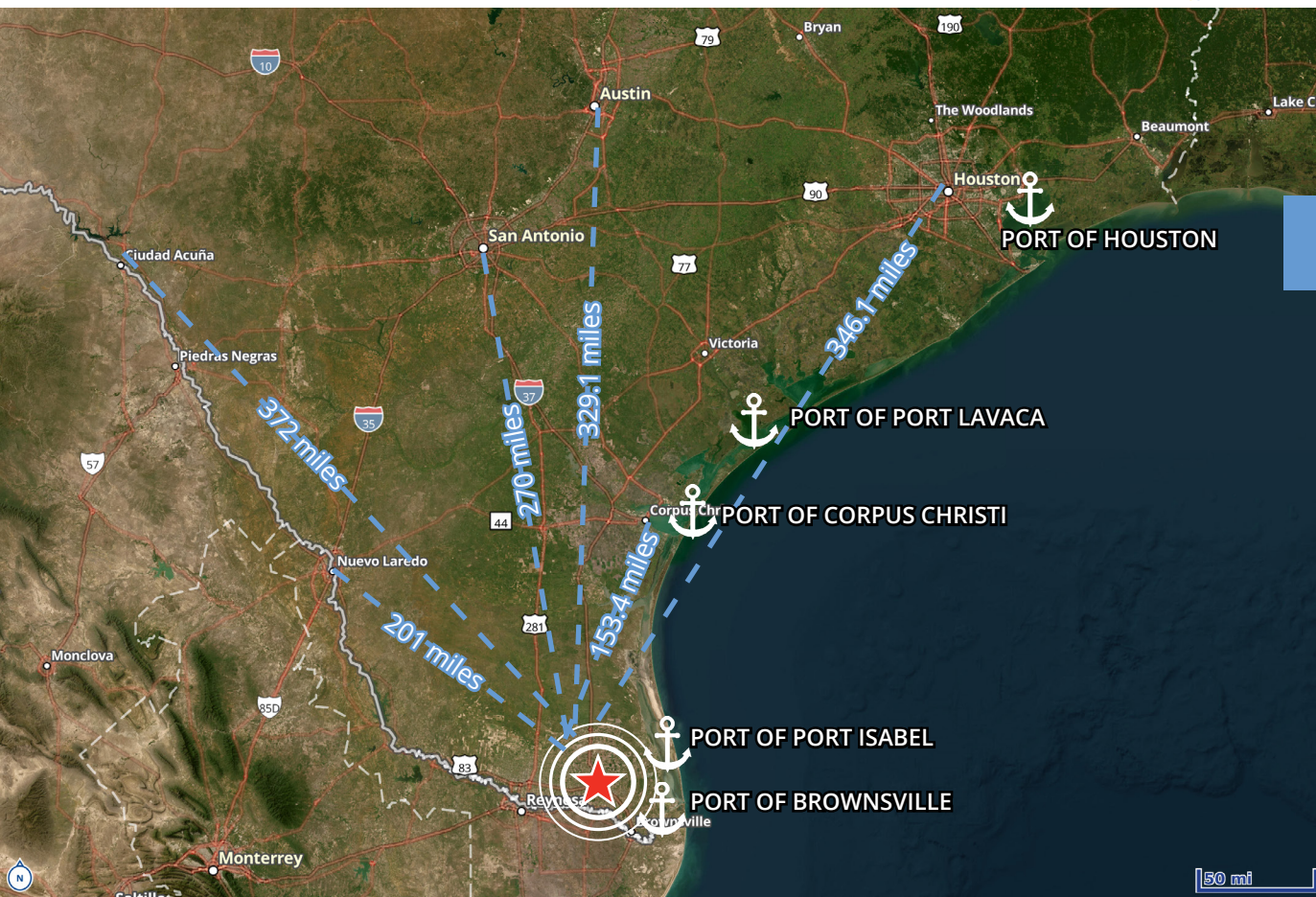


Property Features

- Approximately 388 Acres
- Ideal for Rail Site Yard
- Pipeline to Port of Brownsville
- Adjacent Border Patrol Checkpoint
- Direct Access to Mexico
- ±1,767 ft US Highway 281 frontage
- ±20 mins from Port of Brownsville

Site Scenarios

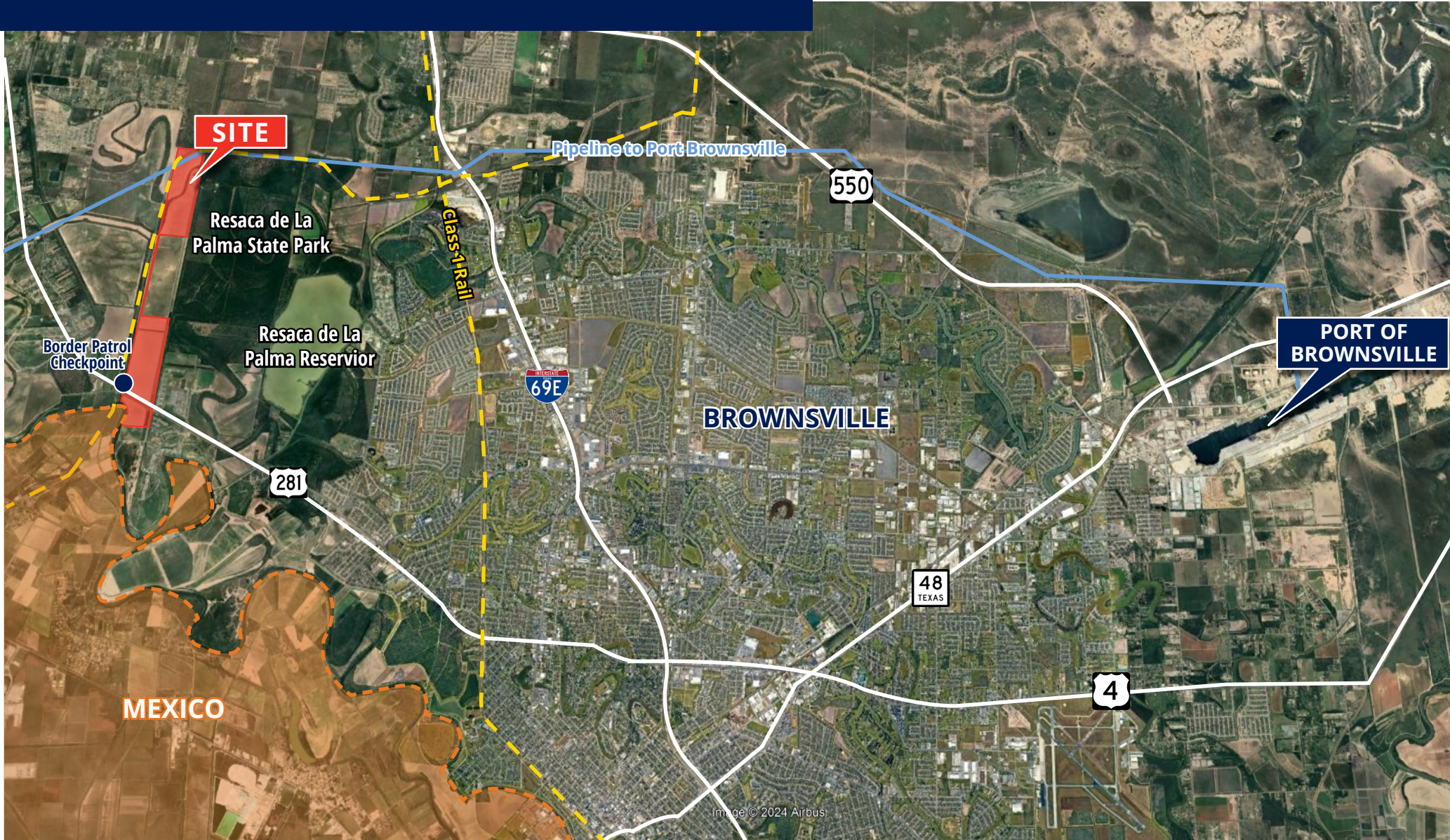
- Available for Lease
- Available for Purchase
- Ownership Generally Open to a Joint Venture as Equity Partner



Key Distances

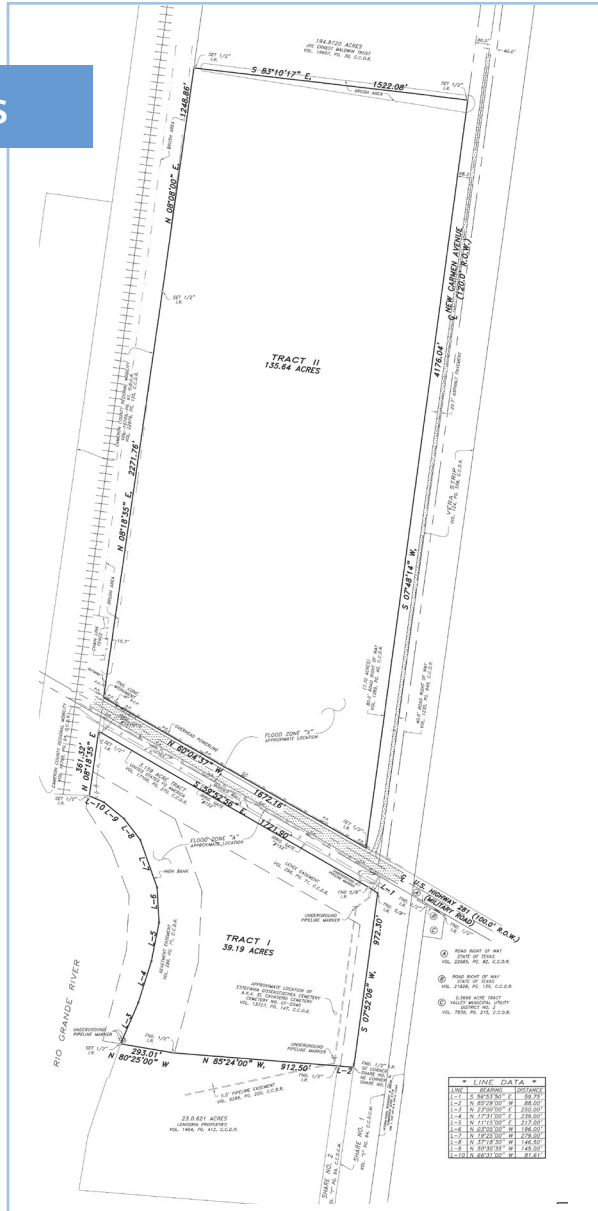
Location	Miles
Port of Brownsville	14.5
Port of Port Isabel	201
Port of Corpus Christi	270
Port of Port Lavaca	329.1
Port of Houston	346.1
Corpus Christi	153.4
Laredo	201
San Antonio	270
Austin	329.1
Houston	346.1
Del Rio	372
El Paso	822

Location Overview

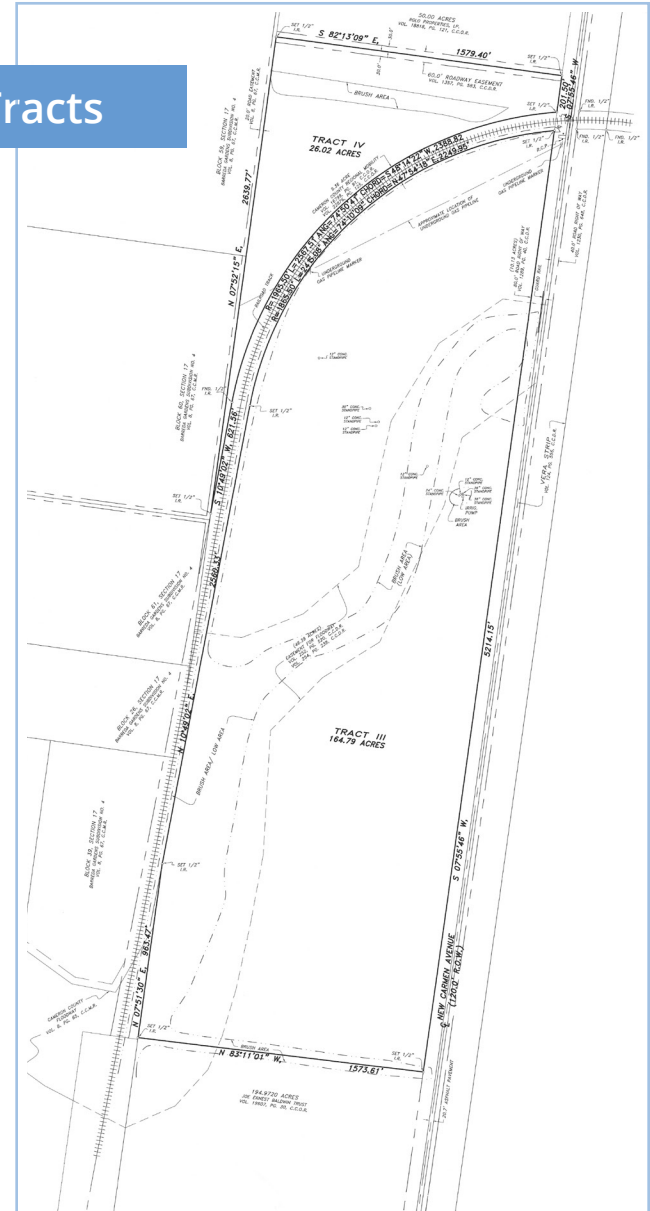


Property Surveys

South Tracts



North Tracts





Jon Lindenberger, CCIM, SIOR
Principal & Executive Vice President
D 713 830 2163
C 713 252 4011
jon.lindenberger@colliers.com

1233 West Loop South, Suite 900
Houston, TX 77027
+1 713 222 2111
www.colliers.com

This document has been prepared by Colliers International for advertising and general information only. Colliers International makes no guarantees, representations or warranties of any kind, expressed or implied, regarding the information including, but not limited to, warranties of content, accuracy and reliability. Any interested party should undertake their own inquiries as to the accuracy of the information. Colliers International excludes unequivocally all inferred or implied terms, conditions and warranties arising out of this document and excludes all liability for loss and damages arising there from. This publication is the copyrighted property of Colliers International and/or its licensor(s). ©2024. All rights reserved.