

LORTEX BUILDING - WAREHOUSE SPACE FOR LEASE

113 SW 8th Street | Des Moines, Iowa



OVERVIEW

Located along the MLK corridor near the new soccer stadium, Principal Park and the new Market District Park, the Lortex would be the perfect location for a warehouse. The building contains 20,000 SF of available space for lease. Surface parking available. \$8.00 psf modified gross.

DEMOGRAPHICS

ESRI 2024	3 mile	5 mile
Population	100,728	212,377
Avg. HH Income	\$82,354	\$87,144

FOR MORE INFORMATION:

Tim Rypma | Cell: 515-419-1445
 Email: tim@buyersrealtyinc.com

FEATURES

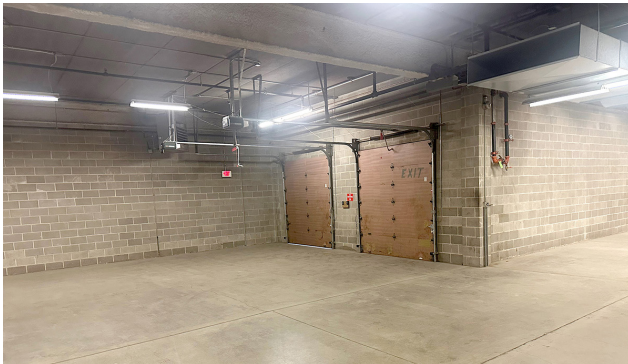
- 20,000 SF with surface parking
- For Lease
- Ideal space for a warehouse
- 10,000 SF per floor (2 floors)
- Dock doors



BUYERS REALTY INC.

WAREHOUSE SPACE FOR LEASE

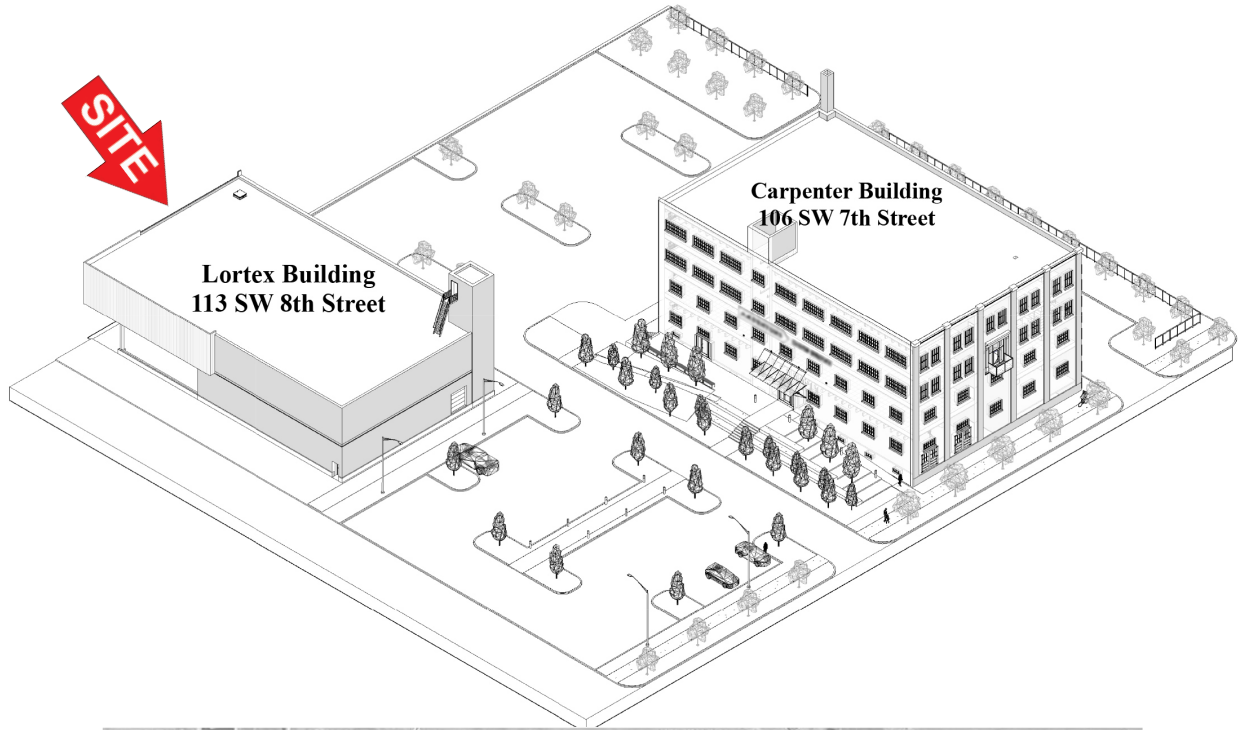
113 SW 8th Street | Des Moines, Iowa



4350 Westown Parkway Suite 100 West Des Moines, IA 50266
www.buyersrealtyinc.com 515-277-4000

WAREHOUSE SPACE FOR LEASE

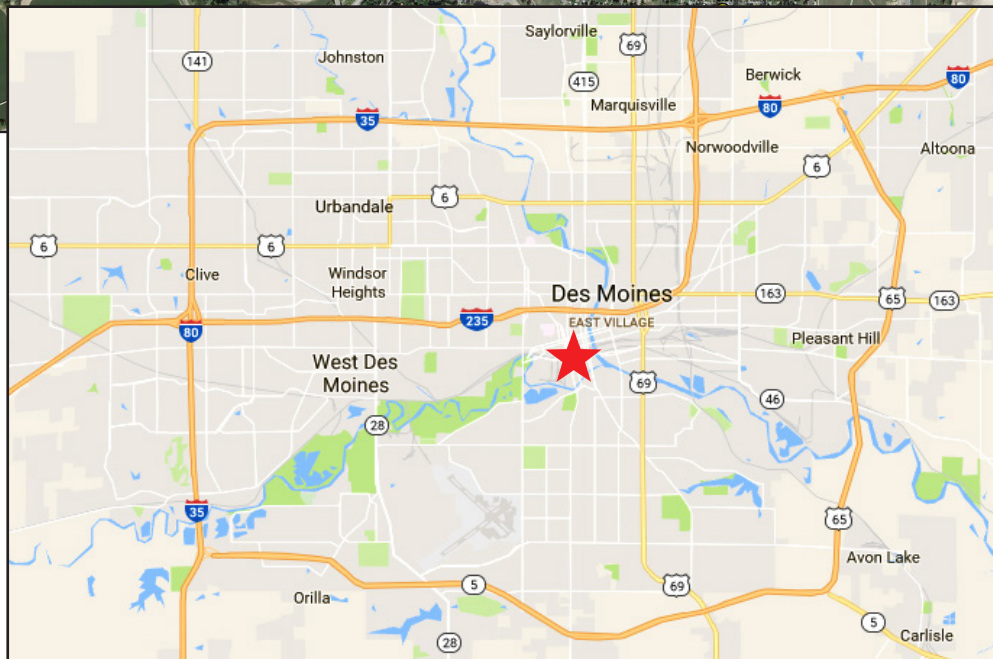
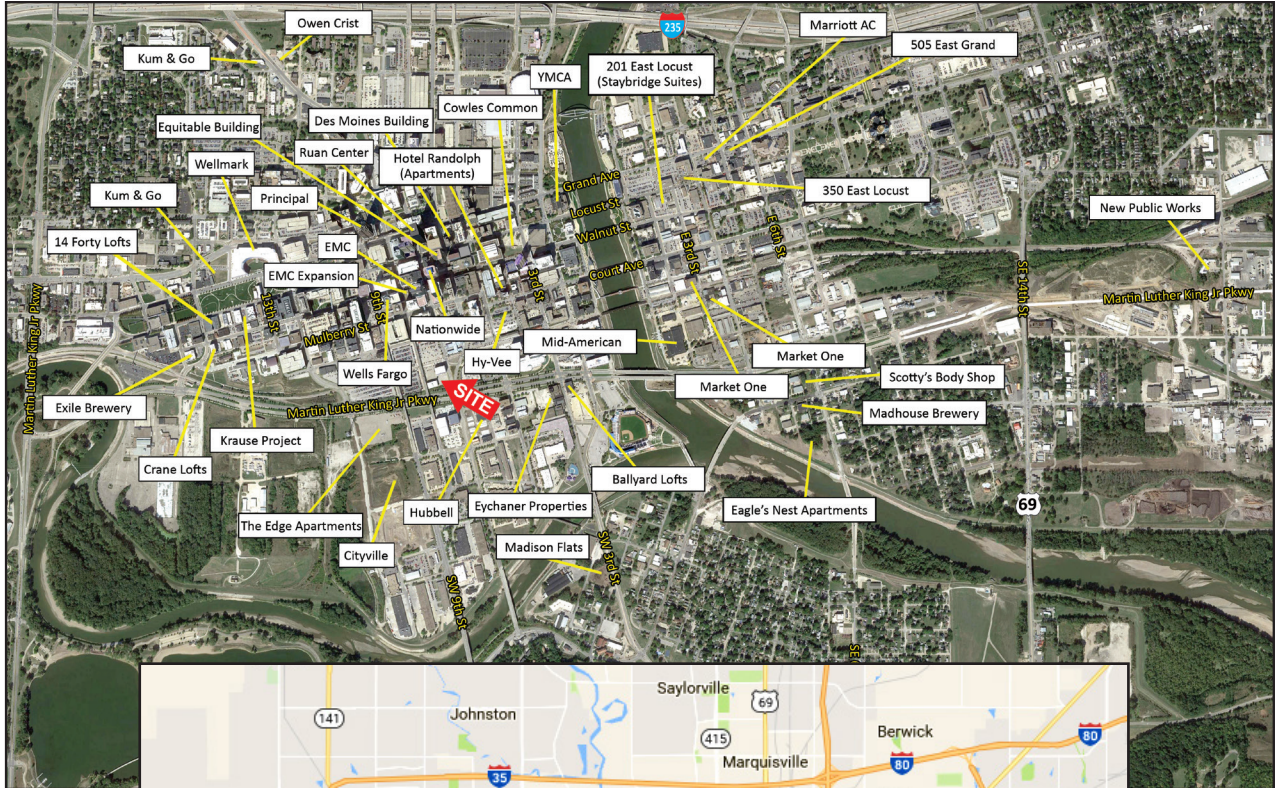
113 SW 8th Street | Des Moines, Iowa



4350 Westown Parkway Suite 100 West Des Moines, IA 50266
www.buyersrealtyinc.com 515-277-4000

WAREHOUSE SPACE FOR LEASE

113 SW 8th Street | Des Moines, Iowa



FOR MORE INFORMATION:

Tim Rypma | Cell: 515-419-1445
Email: tim@buyersrealtyinc.com

A MEMBER OF
CHAINLINKS
RETAIL ADVISORS



4350 Westown Parkway Suite 100 West Des Moines, IA 50266
www.buyersrealtyinc.com 515-277-4000