

FOR LEASE

1134 S. 12th St.
KANSAS CITY, KS 66105



DRIVE-IN MAINTENANCE FACILITY

+/-26,934 SF FACILITY WITH 14.84 ACRES OUTDOOR STORAGE



DRIVE-IN MAINTENANCE FACILITY
1134 S. 12th St. Kansas City, KS 66105

FOR LEASE



DRIVE-IN MAINTENANCE FACILITY
1134 S. 12th St. Kansas City, KS 66105

FOR LEASE



New Union
Pacific
Intermodal

Available to
Subdivide

+/-10 Acres

+/-4 Acres



DRIVE-IN MAINTENANCE FACILITY
1134 S. 12th St. Kansas City, KS 66105

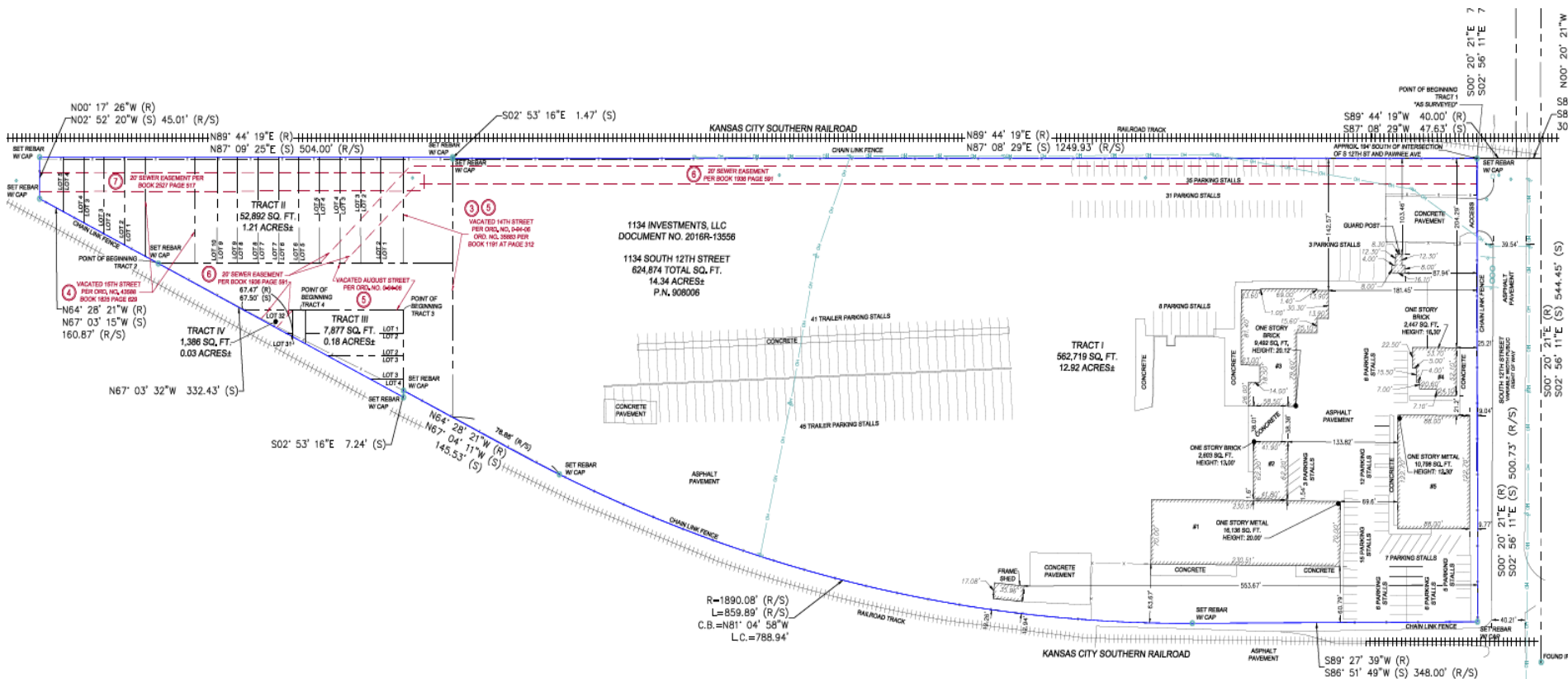
FOR LEASE

Total Square Footage	+/-26,934 Square Feet
Office Space	+/-10,798 Square Feet
Maintenance Shop Space	+/-16,136 Square Feet
Clear Height	20'
Parcel Size	14.84 Acres Paved
Loading	Twelve 14'x16' Drive-in Doors One 12'x12' Drive-in Door
Power	400 Amps- 480V
Amenities	Floor drains, paved outdoor storage, LED lighting, epoxy flooring, room for building expansion
Availability	March 1, 2026
Lease Rate	\$62,000/month NNN
NNN Expenses	+/- \$17,813.79/month



1134 S. 12th St. Kansas City, KS 66105

FOR LEASE



DRIVE-IN MAINTENANCE FACILITY
1134 S. 12th St. Kansas City, KS 66105

FOR LEASE

Please contact Andrew Fischer
or Henry Weiler to schedule a
tour of this facility.

Andrew Fischer
+1 816 665 6641
andrew@fwipartners.com

Henry Weiler
+1 913 787 5799
henry@fwipartners.com

