

Retail Space Available

Three Kings Building • 330 SW 6th Avenue • Portland • OR 97204



HISTORIC LANDMARK PROPERTY

Designed by renowned architect, A.E. Doyle as original Oregon
Headquarters for Bank of California

**Unique Opportunity for
High-End Retail, Restaurants or Financial Institutions**

Current Space Available

Over 19,000 SF of NNN leasable space:

- Main, Ground & Mezz: 11746 SF
- 2nd Floor: 4592 SF
- 3rd Floor Penthouse 2884 SF occupied

For More Information contact:

Shami Abraham (949) 640-0801

sabraham@picoco.com

The information herein has been obtained from sources we deem reliable. We do not, however, guarantee its accuracy. All information should be verified prior to purchase/leasing.

Property information

- Great downtown location, on the corner of SW 6th and SW Stark
- Newly renovated; including new floors, ceilings and updated paint and fixtures throughout
- Centrally located in downtown Portland's financial district
- Convenient to banking, dining and shopping
- Located directly on the downtown transit mall with easy access to I-5, I-405 and Hwy 26
- Built in 1923 and on the National Register of Historic Places since 1978

Features

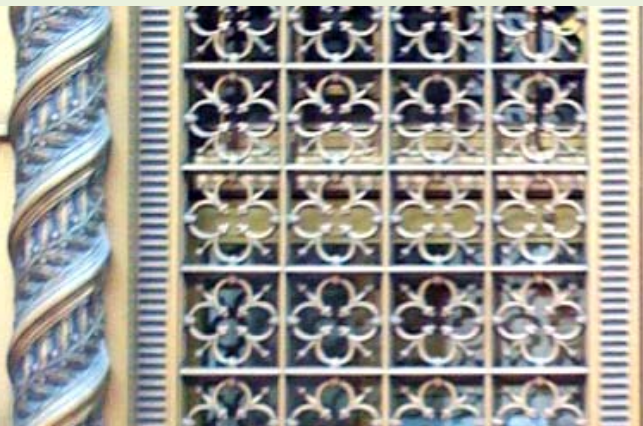
- Elevator service
- Ornate marble entrance with original decorative 30-foot high ceiling on main level
- 2 showers on lower level with lockers for employees who prefer to bike to work (1 is handicapped accessible)
- Floor-to-ceiling picture windows with automatic blinds on main level
- Windows throughout the second floor which open
- Full kitchens on lower level and second floor
- M and F restrooms on lower level and second floor
- Large, walk-in safe on main level and second floor
- Sprinklers throughout the building
- Security and fire alarm system





History

This location was the site of the first Portland Central Library, which moved to its present site in the early 1920s. The Bank of California saw the lot as fit to build a Portland branch and hired local notable architect A.E. Doyle to design it. Doyle's chief designer Charles K. Green had traveled abroad to study Greco-roman architectural forms in the 1910s. The result of his research resulted in three Italianate buildings, of which the Bank of California Building was the first. The others were the Chicago/Italianate Pacific Building and the Public Service Building, an early skyscraper. The exterior lights on the Public Services Building are of the same design of those on the Bank of California Building.

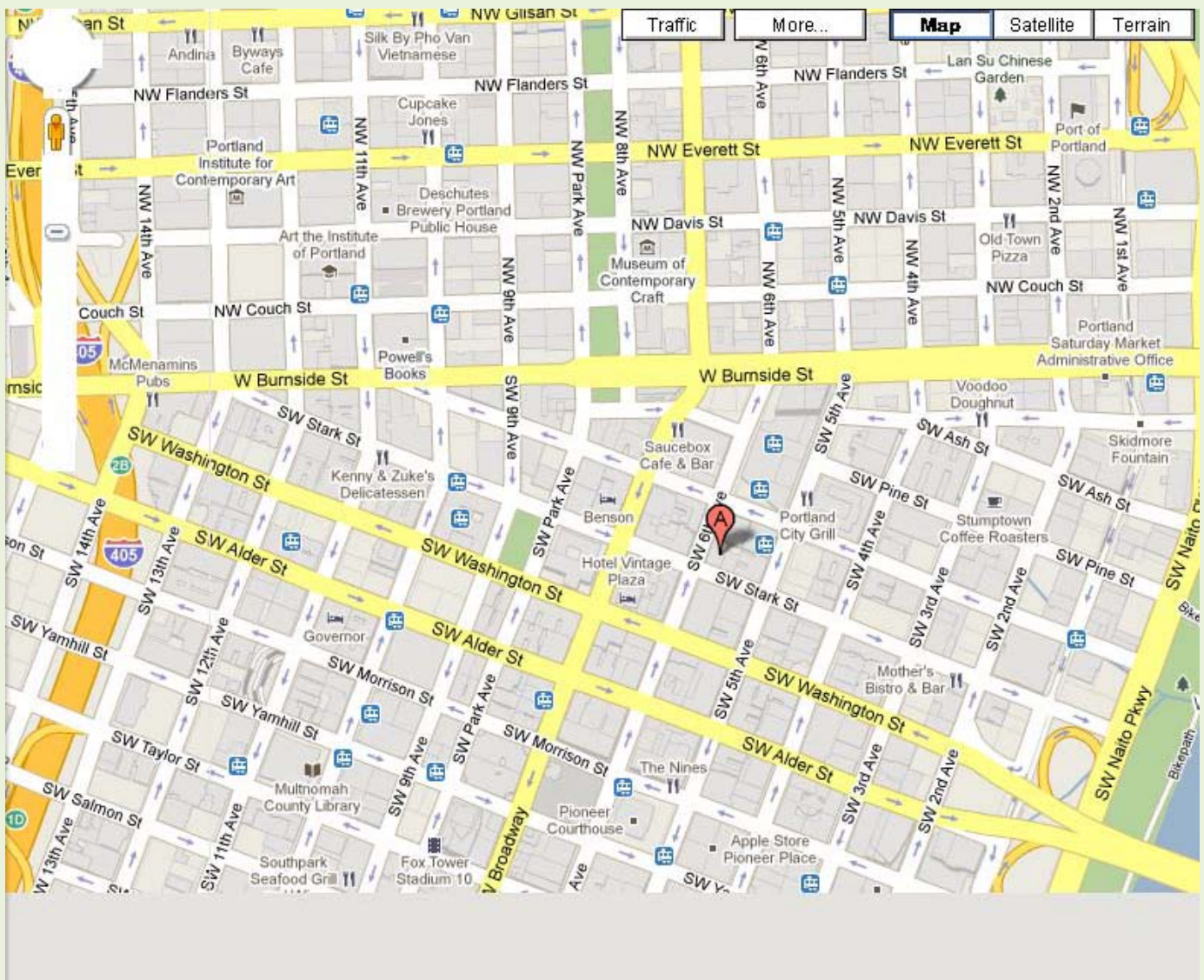


Premier Location

Three Kings is surrounded by Wells Fargo Bank and Courtyard by Marriott. It is at the center of both the business and entertainment districts in down-town Portland.

Nearby Points of Interest:

O'Bryant Square, North Park Blocks, Pioneer Courthouse Square, Pioneer Courthouse, Tom McCall Waterfront Park, PGE Park, Portland State University, Memorial Coliseum, Rose Garden, Oregon Museum of Science and Industry, Japanese Gardens and the Oregon Zoo.



For more information, please contact Shami Abraham at (949) 640-0801 (sabraham@picoco.com)