

**1020 TURNPIKE STREET
CANTON, MA**

FOR LEASE



R.W. HOLMES
COMMERCIAL REAL ESTATE

FOR MORE INFORMATION CONTACT:

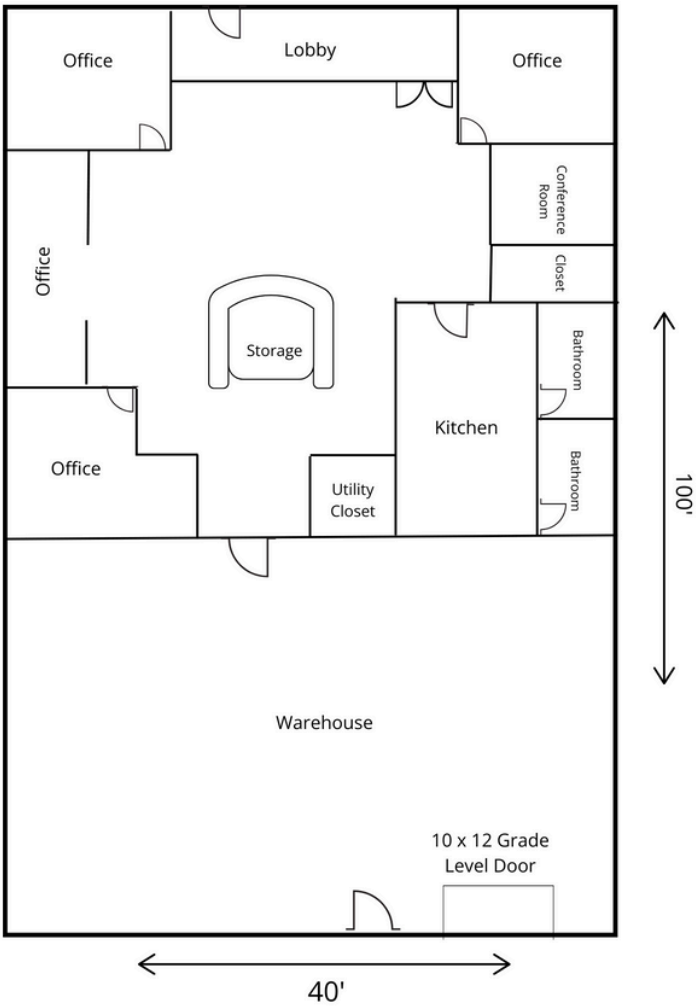
MIKE FAHY
MFAHY@RWHOLMES.COM
(508)907-6728

DEAN BLACKKEY
DBLACKKEY@RWHOLMES.COM
(508)651-9019

ELIZABETH HOLMES
EHOLMES@RWHOLMES.COM
(508)655-5029

PROPERTY OVERVIEW

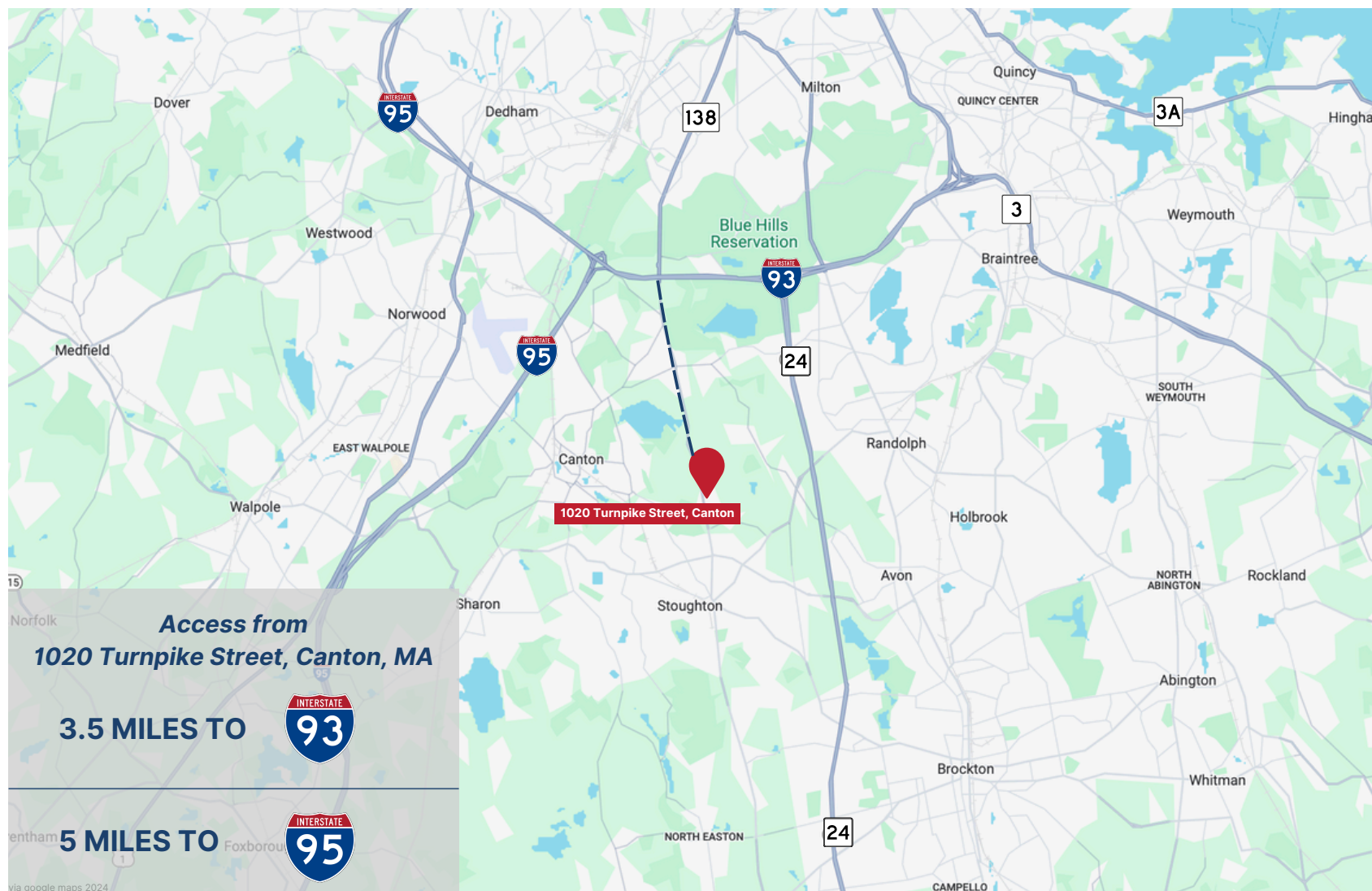
BUILDING SIZE:	75,000 SF
UNIT SIZE:	4,000 SF
YEAR BUILT:	1984
CONSTRUCTION:	Concrete Block
PARKING:	4 Spaces
ZONING:	Industrial
WATER & SEWER:	Town of Canton
HVAC:	Heat in warehouse. Heat and AC in office.
CAM & INSURANCE:	\$1.74/SF
RE Taxes:	\$2.10/SF
ESTIMATED TOTAL:	\$3.84/SF
CLEAR HEIGHT:	14'
LOADING:	1 10' x 12' Grade Level Door
POWER:	200 AMP 208V



R.W. HOLMES COMMERCIAL REAL ESTATE 321 COMMONWEALTH ROAD, SUITE 202, WAYLAND, MA. 01778
(508) 655-5626 | FAX (508) 651-3415 | INFO@RWHOLMES.COM | WWW.RWHOLMES.COM

All information furnished regarding property for sale, rental or financing is from sources deemed reliable. No representation is made as to the accuracy thereof and is submitted subject to errors, omissions, change of price, rental or other conditions, prior sale, lease or financing, or withdrawal without notice.

LOCATION & ACCESS



R.W. HOLMES COMMERCIAL REAL ESTATE 321 COMMONWEALTH ROAD, SUITE 202, WAYLAND, MA. 01778
(508) 655-5626 | FAX (508) 651-3415 | INFO@RWHOLMES.COM | WWW.RWHOLMES.COM

All information furnished regarding property for sale, rental or financing is from sources deemed reliable. No representation is made as to the accuracy thereof and is submitted subject to errors, omissions, change of price, rental or other conditions, prior sale, lease or financing, or withdrawal without notice.