

SEEKING
RESTAURANT
TENANT!

QUARRY LAKE

At Greenspring

mfi realty





WELCOME TO QUARRY LAKE AT GREENSPRING.

Anchored by The Fresh Market & Walgreens, the center boasts 226,000 SF of Class A Office space in addition to single family homes, luxury condos and retail amenities.

Perfectly situated off of I-695 and Greenspring Avenue, the center is also convenient to I-83 and is surrounded with some of the highest demographics in Maryland.

Join us in this unique, upscale and convenient lifestyle center to eat, live, dine, shop and enjoy the view of the lake, which is the deepest body of water in Maryland.



DEMOGRAPHICS

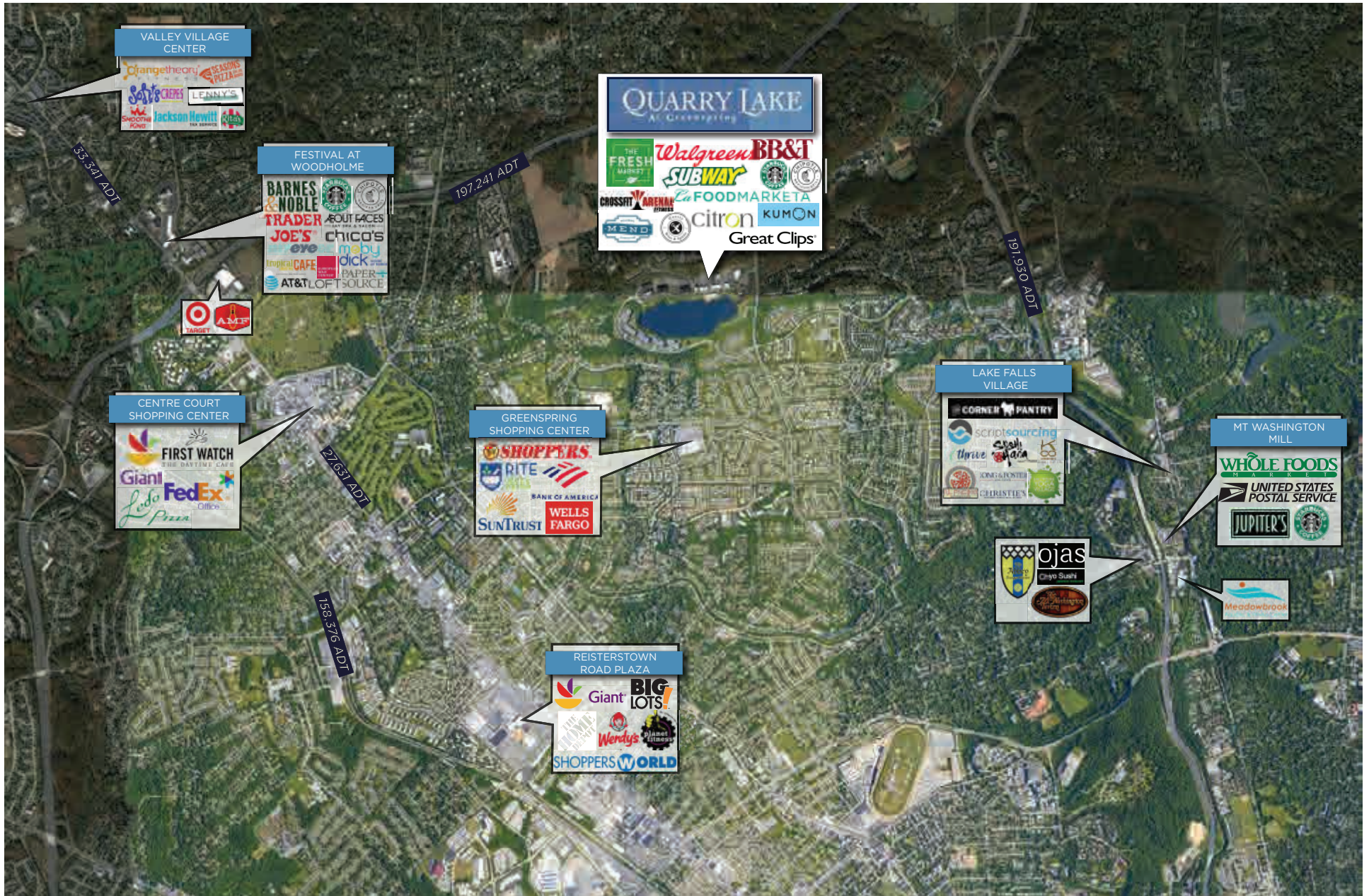
	3 MIN	5 MIN	10 MIN
Population	4,275	16,366	89,396
Avg HH Income	\$189,311	\$136,488	\$115,652
# of Employees	1,564	3,113	52,488



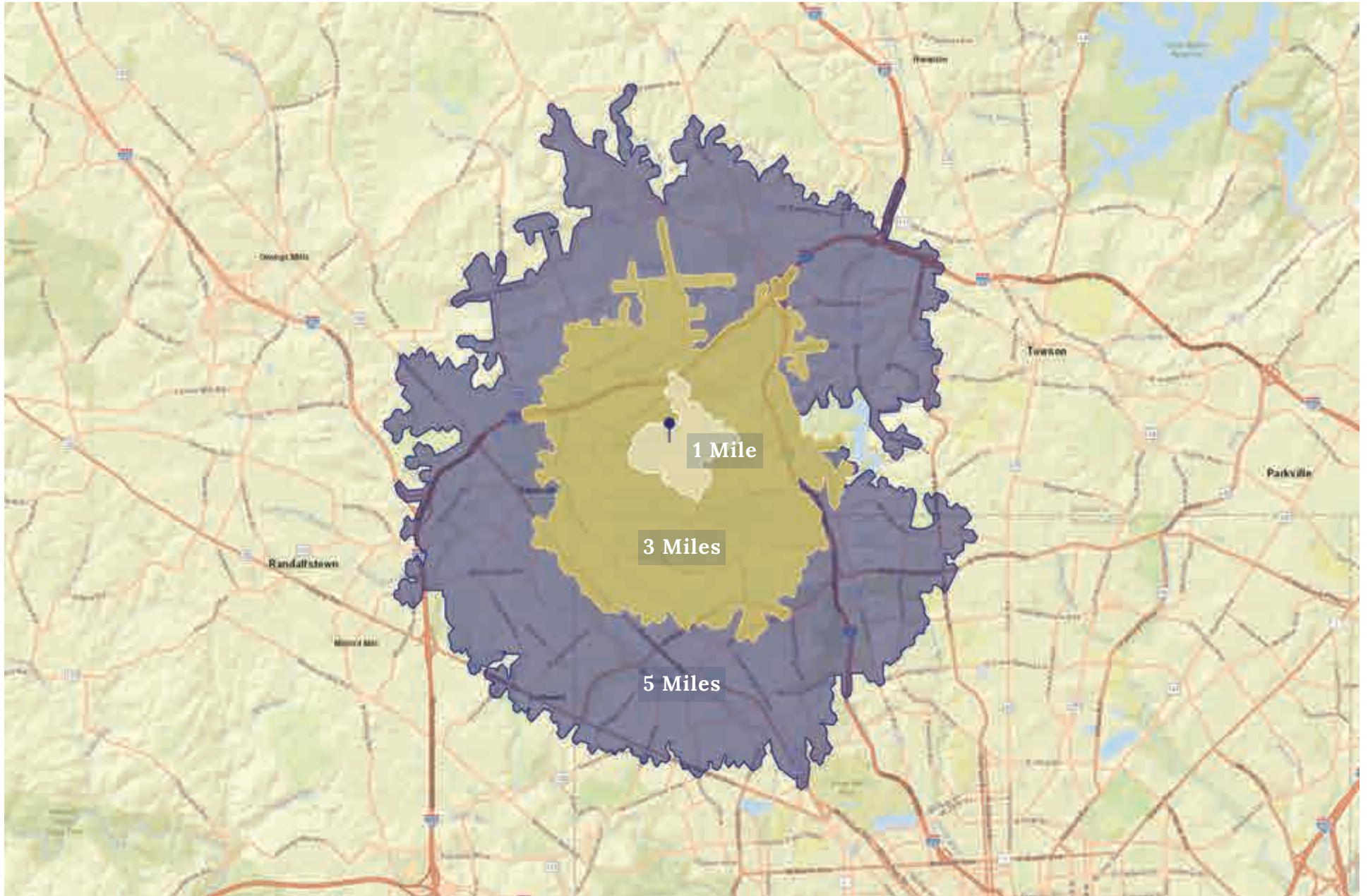
SITE PLAN



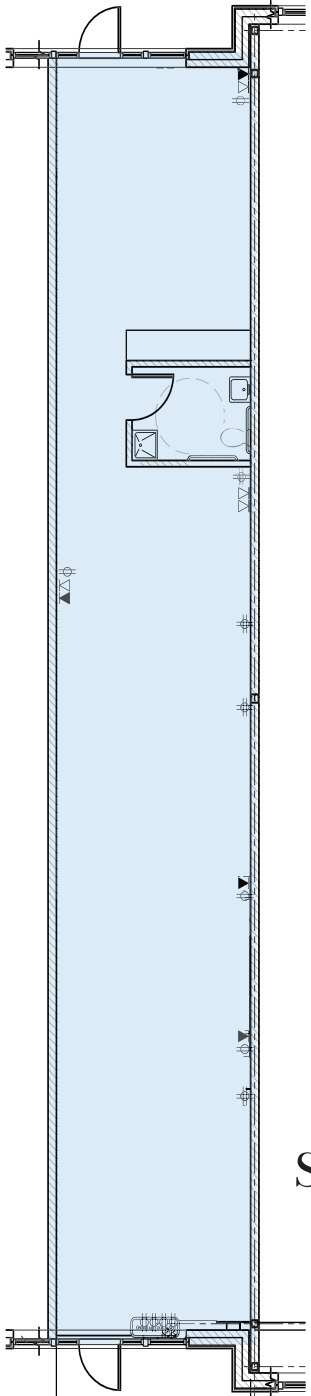
MARKET AERIAL



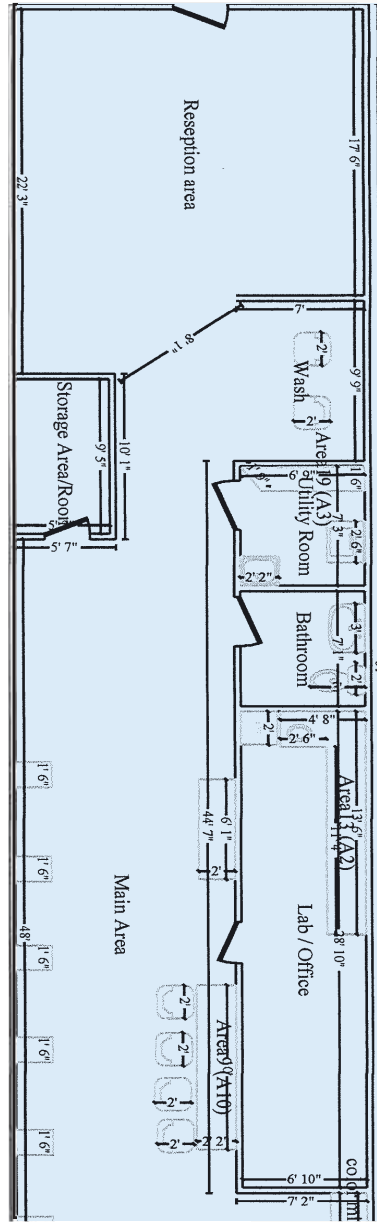
DRIVE DISTANCE MAP



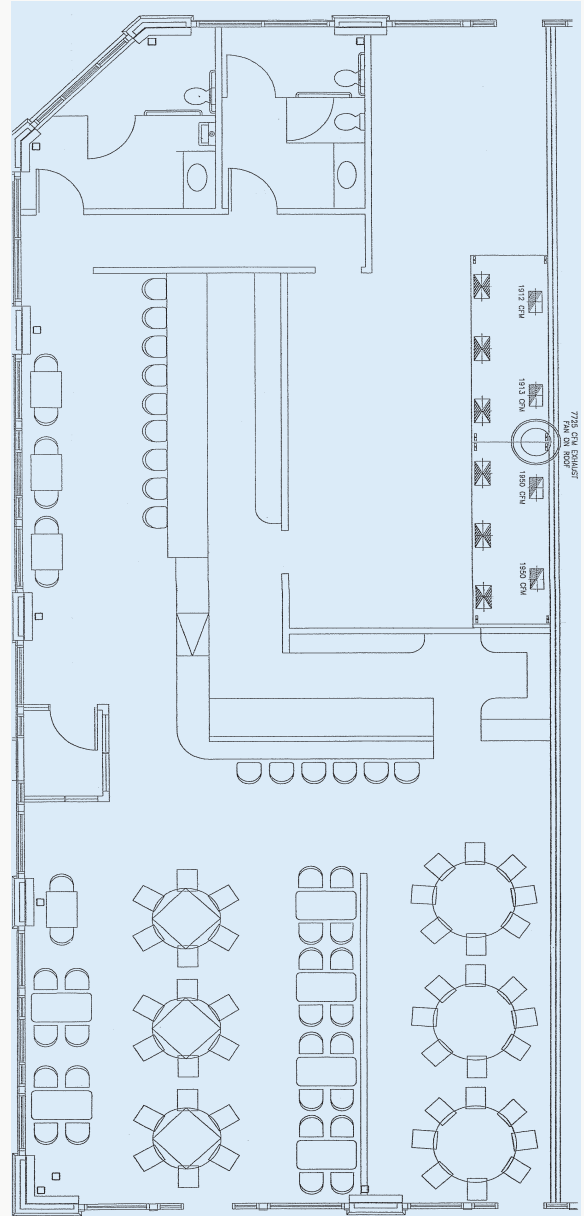
SPACE PLANS



Space 2542
1,305 SF



Space 2578
1,748 SF



Space 2592
2,865 SF



LEASING INQUIRIES

Michael Stoltz
mstoltz@mfirealty.com | 410.308.6384

Jacob Giacalone
jacob@mfirealty.com | 631.838.2288

2510-2850 Quarry Lake Drive
Baltimore, Maryland 21209