

46-16 QUEENS BLVD



BETWEEN GREENPOINT AVENUE & 47TH STREET
SUNNYSIDE | QUEENS



*Greenpoint Avenue
10,000 Vehicles per Day*

2,907,388 Annual Riders

7

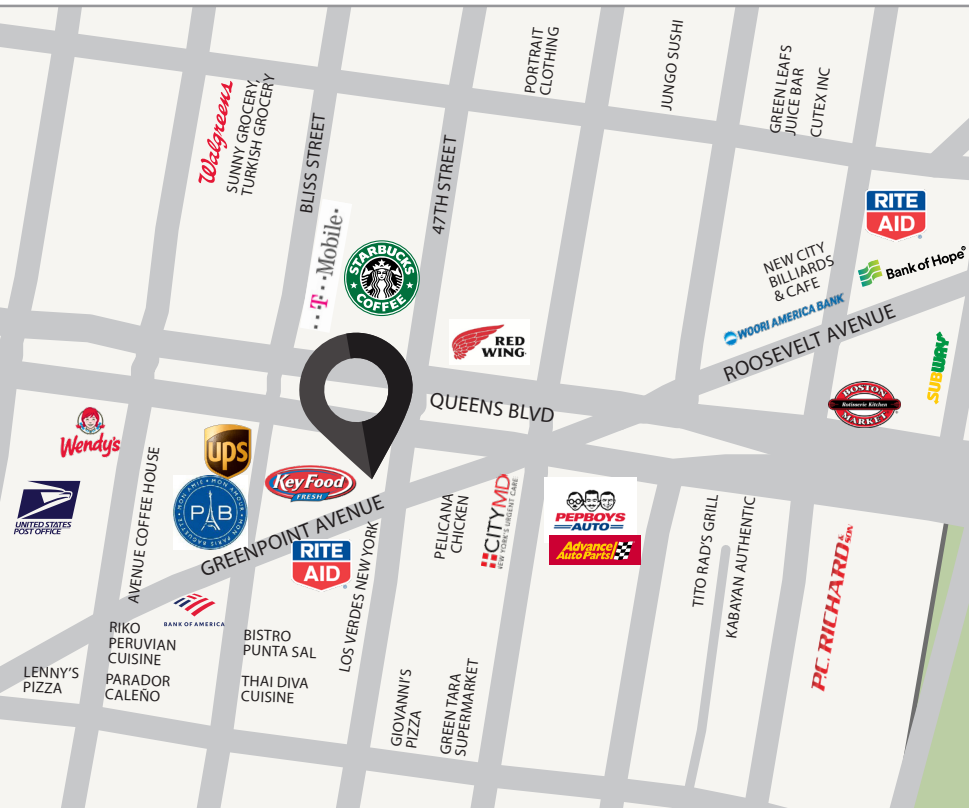
*Queens Blvd
45,000 Vehicles per Day*

46-16 QUEENS BLVD

BETWEEN GREENPOINT AVENUE & 47TH STREET
SUNNYSIDE | QUEENS

PROPERTY HIGHLIGHTS

- Adjacent to the 46 Street / Bliss Street subway station – Over 4 million riders annually
- Corner visibility offering over 100' of wraparound frontage
- Over 60,000 vehicles on Queens Blvd per day



SIZE:

Up to 10,000 SF
(Multiple Divisions Available)

FRONTAGE:

100' on Queens Blvd
80' on 47th Street
110' on Greenpoint Avenue

TRANSPORTATION:

7 MTA New York City Bus

NEIGHBORS:



CONTACT OUR BROKERS FOR MORE INFORMATION:

ALBERT MANOPLA
AManopla@ksrny.com

212.380.8369

MARK GALLUCCI
Mgallucci@ksrny.com

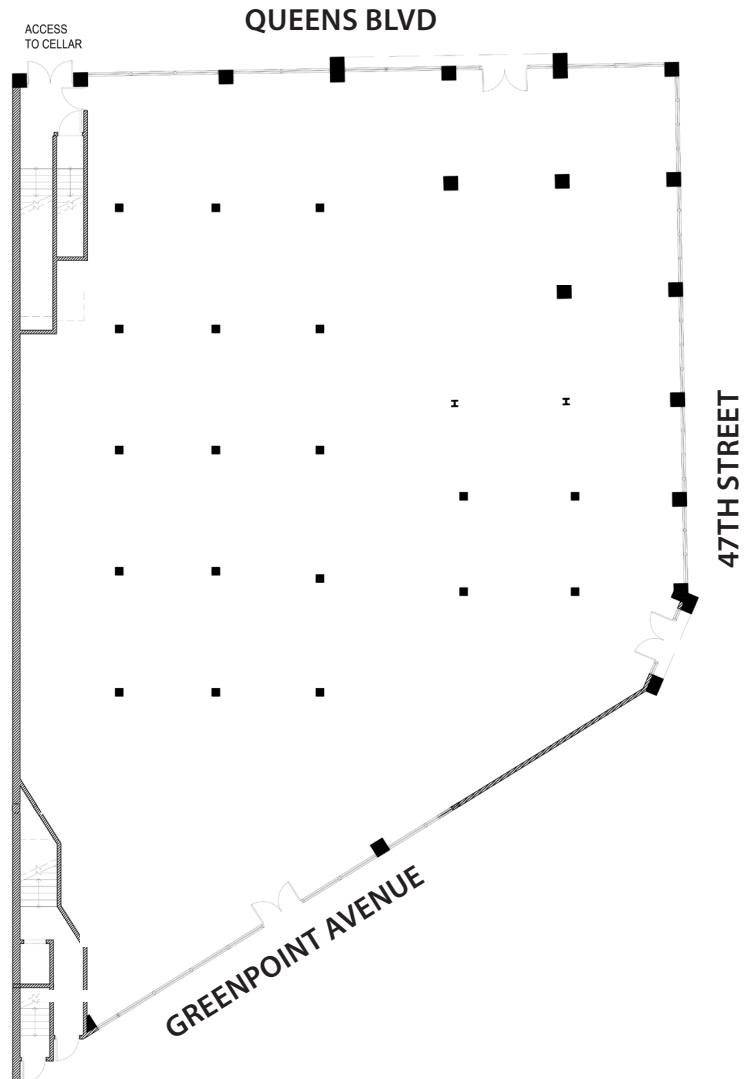
718.551.5387

GEORGE SKALIARINIS
GeorgeS@ksrny.com

347.844.0183

46-16 QUEENS BLVD

BETWEEN GREENPOINT AVENUE & 47TH STREET
SUNNYSIDE | QUEENS



CONTACT AGENTS FOR MORE INFORMATION:

ALBERT MANOPLA
AManopla@ksrny.com

212.380.8369

MARK GALLUCCI
Mgallucci@ksrny.com

718.551.5387

GEORGE SKALIARINIS
GeorgeS@ksrny.com

347.844.0183

All information supplied in this marketing presentation and/or flyer is from sources deemed reliable and is furnished subject to errors, omissions, modifications, removal of listings from sale/lease and to any listing condition. Any square footage, dimensions, floor plans and/or technical data set forth are approximations and are subject to further elaboration/confirmation.