

CHICO CROSSROADS

SEC East 20th St & Dr. Martin Luther King Jr Pkwy at Highway 99 - Chico, CA



Kevin Soares
Executive Vice President
CA DRE #01291491
ksoares@GallelliRE.com

Jeff Hagan
Senior Vice President
CA DRE #01494218
jhagan@GallelliRE.com

Gallelli Real Estate
3005 Douglas Blvd., Suite 200
Roseville, CA 95661
P 916 772 1700
www.GallelliRE.com
Gary B. Gallelli, Broker
CA DRE #00811881



Licensed as Real Estate Salespersons by the CA DRE. The information contained herein has been obtained from sources we deem reliable. While we have no reason to doubt its accuracy, we do not guarantee it. © Gallelli Real Estate. All Rights Reserved.



CHICO CROSSROADS

PROPERTY HIGHLIGHTS & DEMOGRAPHICS

A PROUD MEMBER OF
CHAINLINKS
RETAIL ADVISORS

location: SEC E 20th Street and Dr. Martin Luther King Parkway
Chico, CA

anchor tenants: Foodmaxx, Barnes & Noble, Cost Plus World Market, Michaels, Office Depot, REI

shopping center GLA: ±264,335 Square Feet (GLA)

availability: ±38,250 SF Anchor Space
±4,800 SF Pad Space
±1,500 SF Inline Space
±6,066 SF & ±13,319 SF Warehouse/
Storage Space



2024 total population

1-mile	10,739
3-mile	69,601
5-mile	104,716



2024 daytime population

1-mile	16,000
3-mile	75,863
5-mile	108,959



2024 total employees

1-mile	6,669
3-mile	36,491
5-mile	48,450



2024 total households

1-mile	4,492
3-mile	29,779
5-mile	45,154



2024 average HH income

1-mile	\$88,325
3-mile	\$101,658
5-mile	\$108,548



traffic counts

CA Hwy 99 (south of E. 20th St)	77,992
E. 20th St (south of Hwy 99)	19,024



Notable Retailers in Close Proximity Include:



Kevin Soares
Executive Vice President
CA DRE #01291491
ksoares@GallelliRE.com

Jeff Hagan
Senior Vice President
CA DRE #01494218
jhagan@GallelliRE.com

Gallelli Real Estate
3005 Douglas Blvd., Suite 200
Roseville, CA 95661
P 916 772 1700
www.GallelliRE.com
Gary B. Gallelli, Broker
CA DRE #00811881



Licensed as Real Estate Salespersons by the CA DRE. The information contained herein has been obtained from sources we deem reliable. While we have no reason to doubt its accuracy, we do not guarantee it. © Gallelli Real Estate. All Rights Reserved.



CHICO CROSSROADS

PROPERTY OVERVIEW

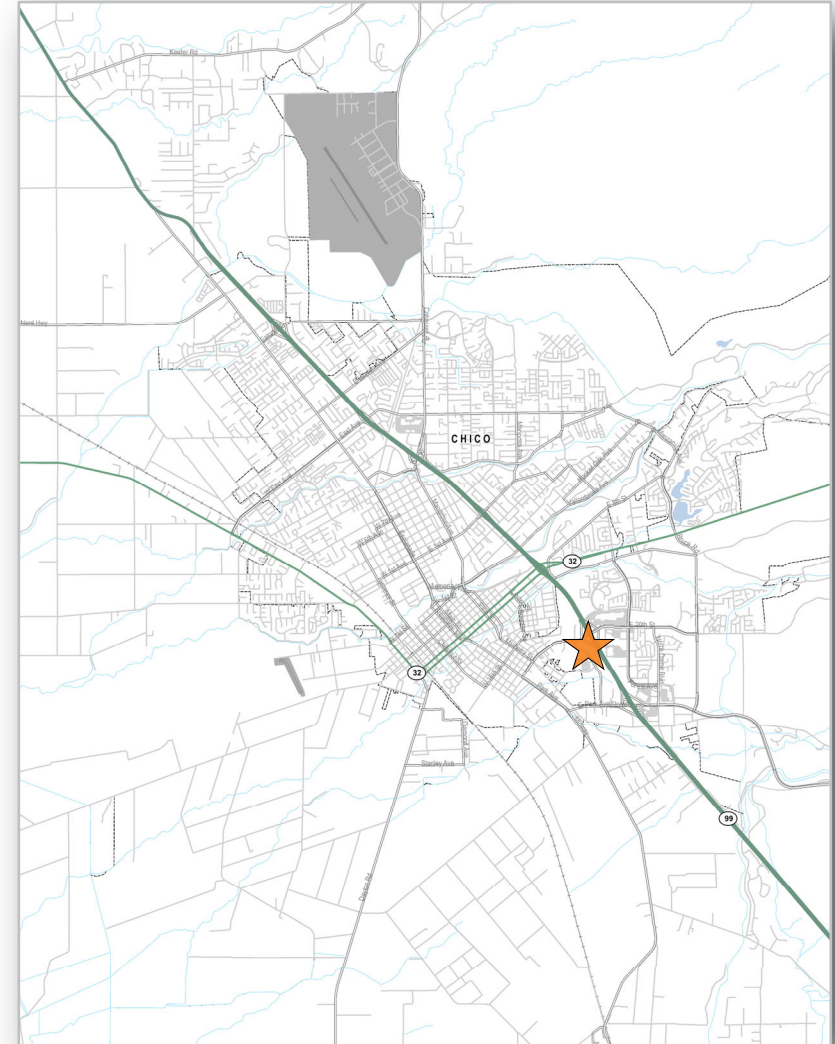
A PROUD MEMBER OF
CHAINLINKS
RETAIL ADVISORS

Situated at the southeast corner of E. 20th Street and Dr. Martin Luther King Jr Parkway along Highway 99, **Chico Crossroads** is part of the retail epicenter of the Chico region.

Visible to nearly 98,000 cars per day, the $\pm 264,335$ square foot community center is anchored by Foodmaxx, Michaels, Office Depot, Barnes & Noble, Cost Plus World Market and coming soon REI.

The City of Chico's sphere of influence encompasses a 34-square mile area with a total population of $\pm 99,369$ in the incorporated area. Chico's population and housing growth continues to be among the highest in Butte County.

Notable traffic generators in the market include California State University Chico ($\pm 14,581$ total students), and Butte College ($\pm 15,000$ total students). Major employers in Chico include Enloe Medical Center (3,563 employees), CSU Chico (1,106 employees) and the Chico Unified School District (1,494 employees).



Kevin Soares
Executive Vice President
CA DRE #01291491
ksoares@GallelliRE.com

Jeff Hagan
Senior Vice President
CA DRE #01494218
jhagan@GallelliRE.com

Gallelli Real Estate
3005 Douglas Blvd., Suite 200
Roseville, CA 95661
P 916 772 1700
www.GallelliRE.com
Gary B. Gallelli, Broker
CA DRE #00811881



Licensed as Real Estate Salespersons by the CA DRE. The information contained herein has been obtained from sources we deem reliable. While we have no reason to doubt its accuracy, we do not guarantee it. © Gallelli Real Estate. All Rights Reserved.

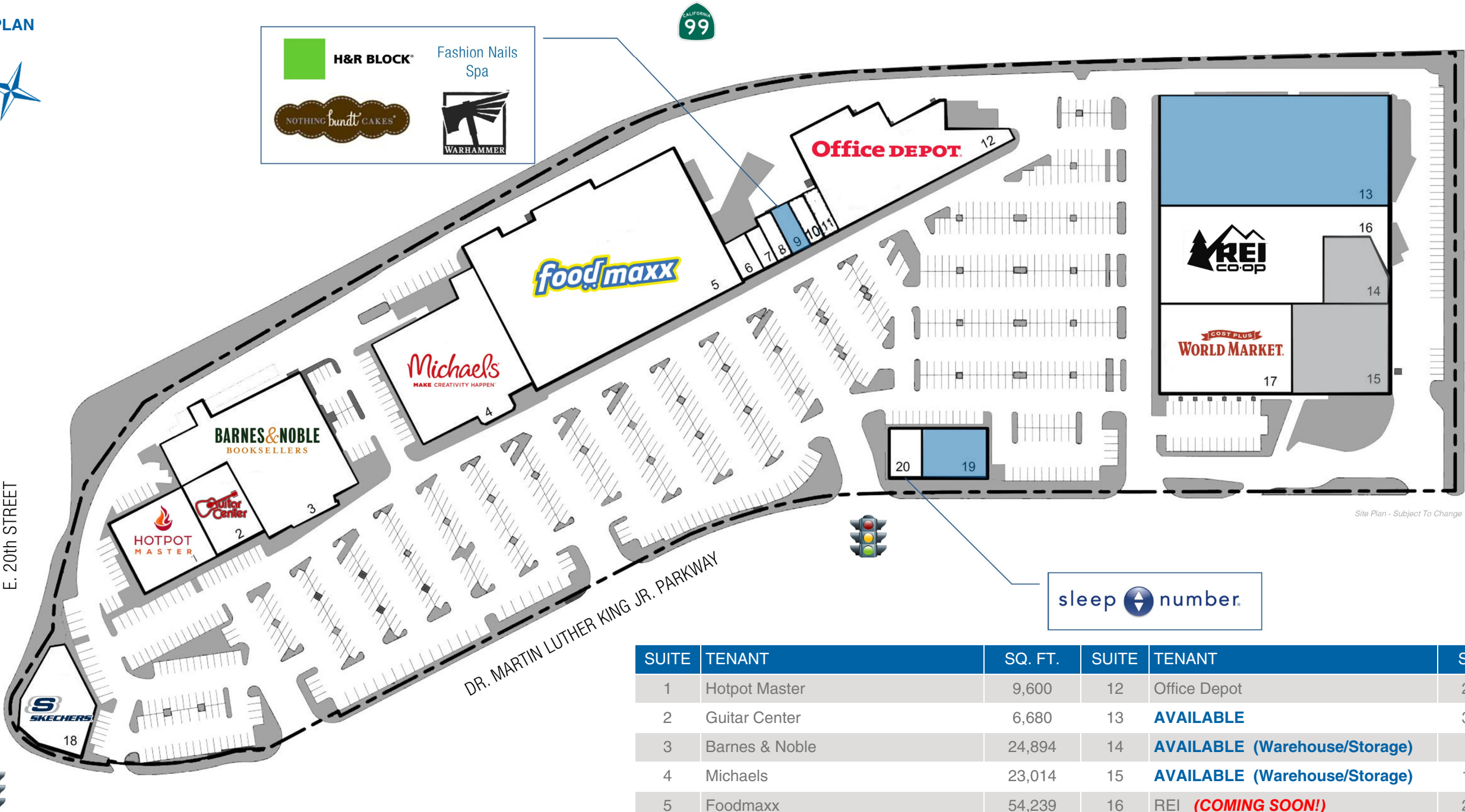


CHICO CROSSROADS

SEC East 20th Street & Dr. Martin Luther King Jr. Parkway at Highway 99 - Chico, CA

A proud member of
CHAINLINKS
RETAIL ADVISORS

SITE PLAN



SUITE	TENANT	SQ. FT.	SUITE	TENANT	SQ. FT.
1	Hotpot Master	9,600	12	Office Depot	22,000
2	Guitar Center	6,680	13	AVAILABLE	38,250
3	Barnes & Noble	24,894	14	AVAILABLE (Warehouse/Storage)	6,066
4	Michaels	23,014	15	AVAILABLE (Warehouse/Storage)	13,319
5	Foodmaxx	54,239	16	REI (COMING SOON!)	25,002
6	H&R Block	1,500	17	Cost Plus World Market	17,873
7	Fashion Nails Spa	1,000	18	Skechers (COMING SOON!)	8,598
8	Warhammer	1,200	19	AVAILABLE	4,800
9	AVAILABLE	1,500	20	Sleep Number	2,400
10/11	Nothing Bundt Cakes	2,400			

For leasing information,
please contact:

Kevin Soares
CA DRE #01291491
ksoares@GallelliRE.com

Jeff Hagan
CA DRE #01494218
jhagan@GallelliRE.com

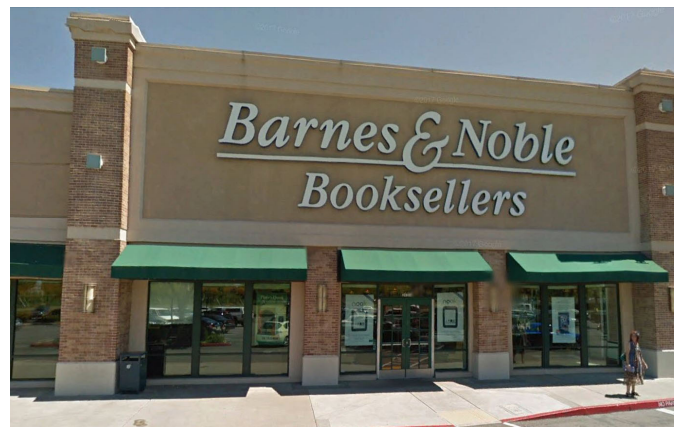
Gallelli Real Estate
3005 Douglas Blvd., Suite 200
Roseville, CA 95661
P 916 772 1700
www.GallelliRE.com
Gary B. Gallelli, Broker
CA DRE #00811881



CHICO CROSSROADS

SHOPPING CENTER PHOTOS

A PROUD MEMBER OF
CHAINLINKS
RETAIL ADVISORS



KIMCO
REALTY
more than shopping
EVERYDAY LIVING™

Licensed as Real Estate Salespersons by the CA DRE. The information contained herein has been obtained from sources we deem reliable. While we have no reason to doubt its accuracy, we do not guarantee it. © Gallelli Real Estate. All Rights Reserved.

Kevin Soares
Executive Vice President
CA DRE #01291491
ksoares@GallelliRE.com

Jeff Hagan
Senior Vice President
CA DRE #01494218
jhagan@GallelliRE.com

Gallelli Real Estate
3005 Douglas Blvd., Suite 200
Roseville, CA 95661
P 916 772 1700
www.GallelliRE.com
Gary B. Gallelli, Broker
CA DRE #00811881

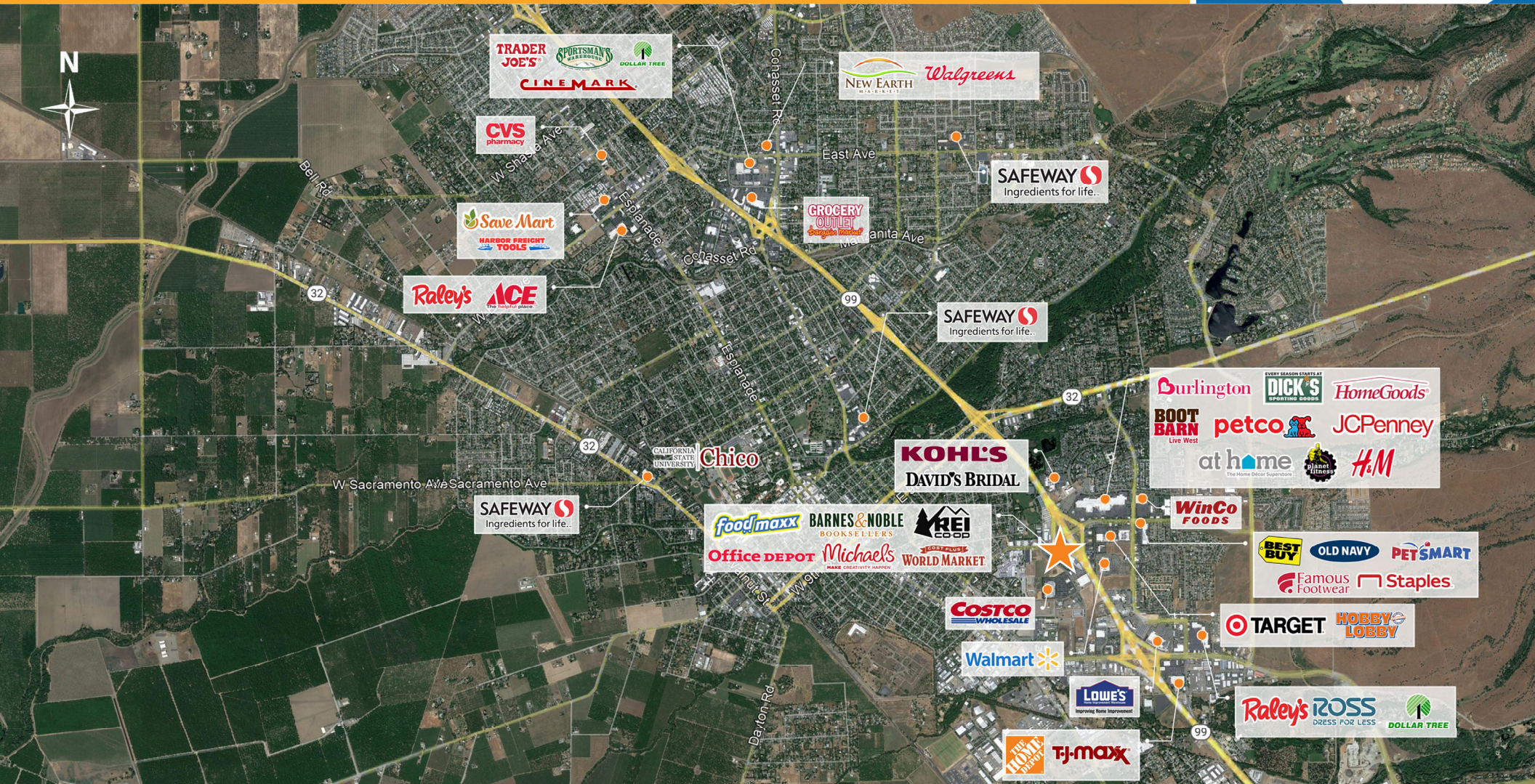
GALLELLI
REAL ESTATE



CHICO CROSSROADS

RETAIL AERIAL

A PROUD MEMBER OF
CHAINLINKS
RETAIL ADVISORS



KIMCO
REALTY
more than shopping
EVERYDAY LIVING™

Kevin Soares
Executive Vice President
CA DRE #01291491
ksoares@GallelliIRE.com

Jeff Hagan
Senior Vice President
CA DRE #01494218
jhagan@GallelliIRE.com

Gallelli Real Estate
3005 Douglas Blvd., Suite 200
Roseville, CA 95661
P 916 772 1700
www.GallelliIRE.com
Gary B. Gallelli, Broker
CA DRE #00811881

GALLELLI
REAL ESTATE

Licensed as Real Estate Salespersons by the CA DRE. The information contained herein has been obtained from sources we deem reliable. While we have no reason to doubt its accuracy, we do not guarantee it. © Gallelli Real Estate. All Rights Reserved.

