

# FOR LEASE



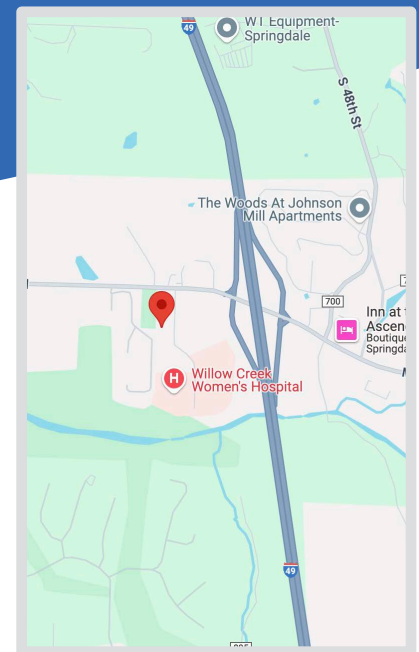
5330 Willow Creek Dr., Springdale, AR 72762

## Medical Office Building

12,004 SF

### Information & Amenities

- 12,004 SF
- Single Tenant Medical Office Building
- 1.31 acres of land
- Strong visibility from Highway 62
- Professional landscaping
- Close proximity to women's hospital



**Ted Dickey**

Ted@LGroup.us

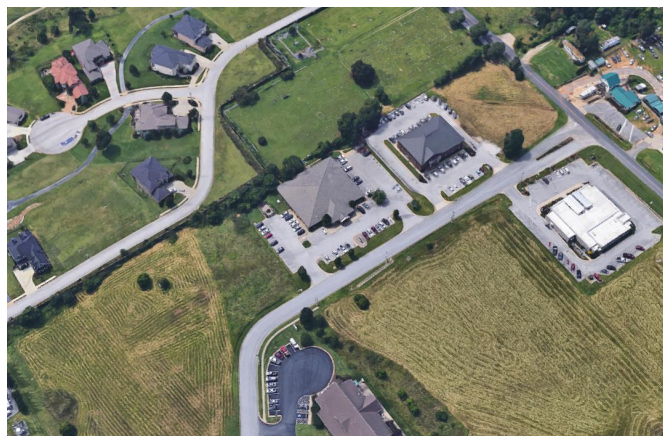
501-291-1161

Lighthouse Asset Advisors makes no guarantees, representations or warranties of any kind, expressed or implied, regarding the information including, but not limited to, warranties of content, accuracy and reliability. Any interested party should undertake their own inquiries as to the accuracy of the information. Lighthouse excludes unequivocally all inferred or implied terms, conditions and warranties arising out of this document and excludes all liability for loss and damages arising there from.



# Additional Photos

5330 Willow Creek Dr., Springdale, AR 72762



**Ted Dickey**

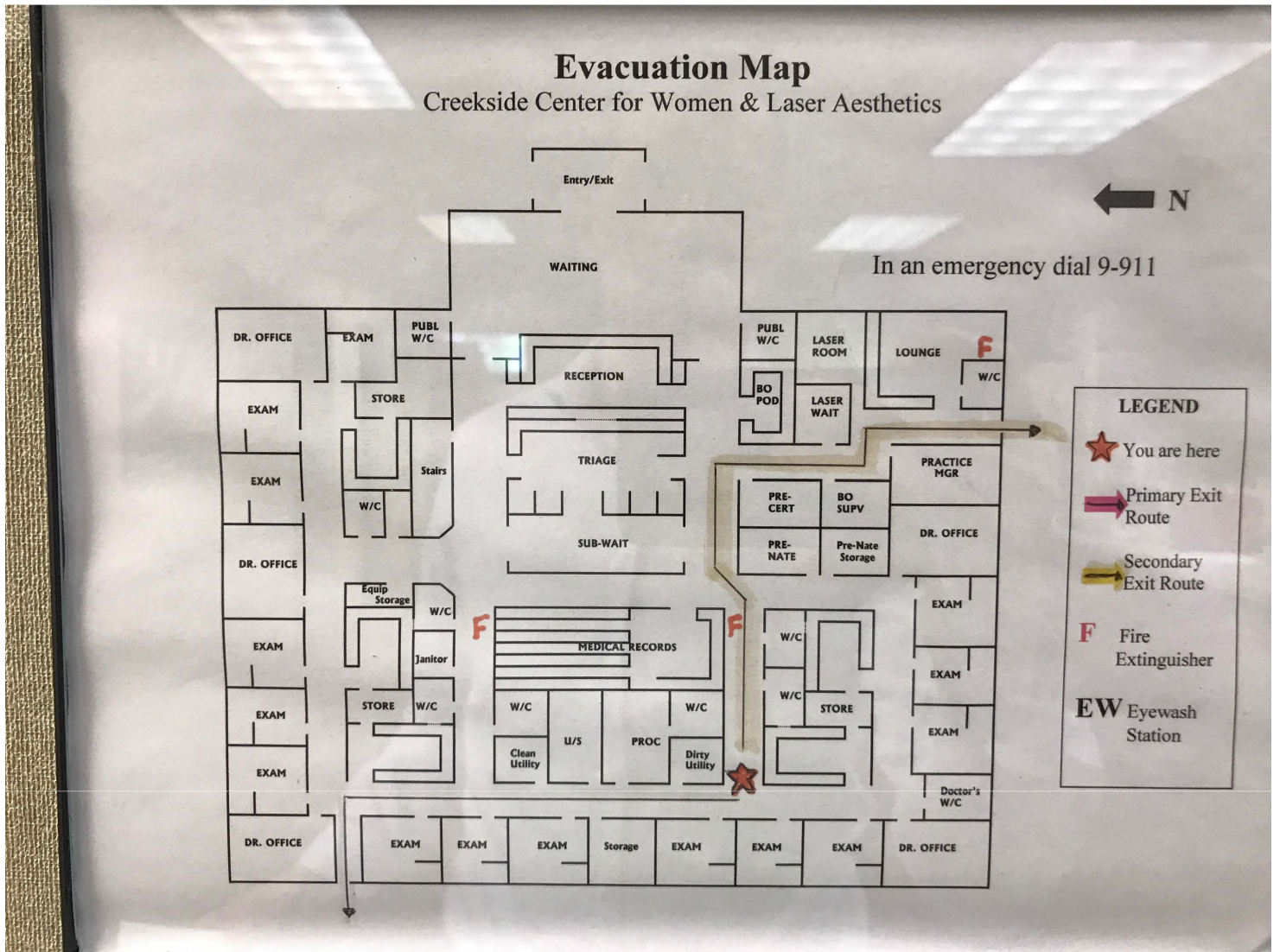
501-291-1161 • [Ted@LGroup.us](mailto:Ted@LGroup.us)





# Floor Plan

5330 Willow Creek Dr., Springdale, AR 72762



Ted Dickey

501-291-1161 Ted@LGroup.us