

PREMIER CAMDEN PROPERTY AVAILABLE

LOCATED IN
OPPORTUNITY
DISTRICT



415 N. 9TH STREET CAMDEN, NJ



Bethany Brown
Vice President
267.226.6602
bethany.brown@wolfcre.com

The foregoing information was furnished to us by sources which we deem to be reliable, but no warranty or representation is made as to the accuracy thereof.
Subject to correction of errors, omissions, change of price, prior sale or withdrawal from market without notice.



Wolf Commercial Real Estate
www.WolfCRE.com



PROPERTY DESCRIPTION

Location: 415 N. 9th Street
Camden, NJ 08102

Size/SF Available: +/-60,000 SF
on 2.64 acres

Sale Price: Call for information

Occupancy: Immediate

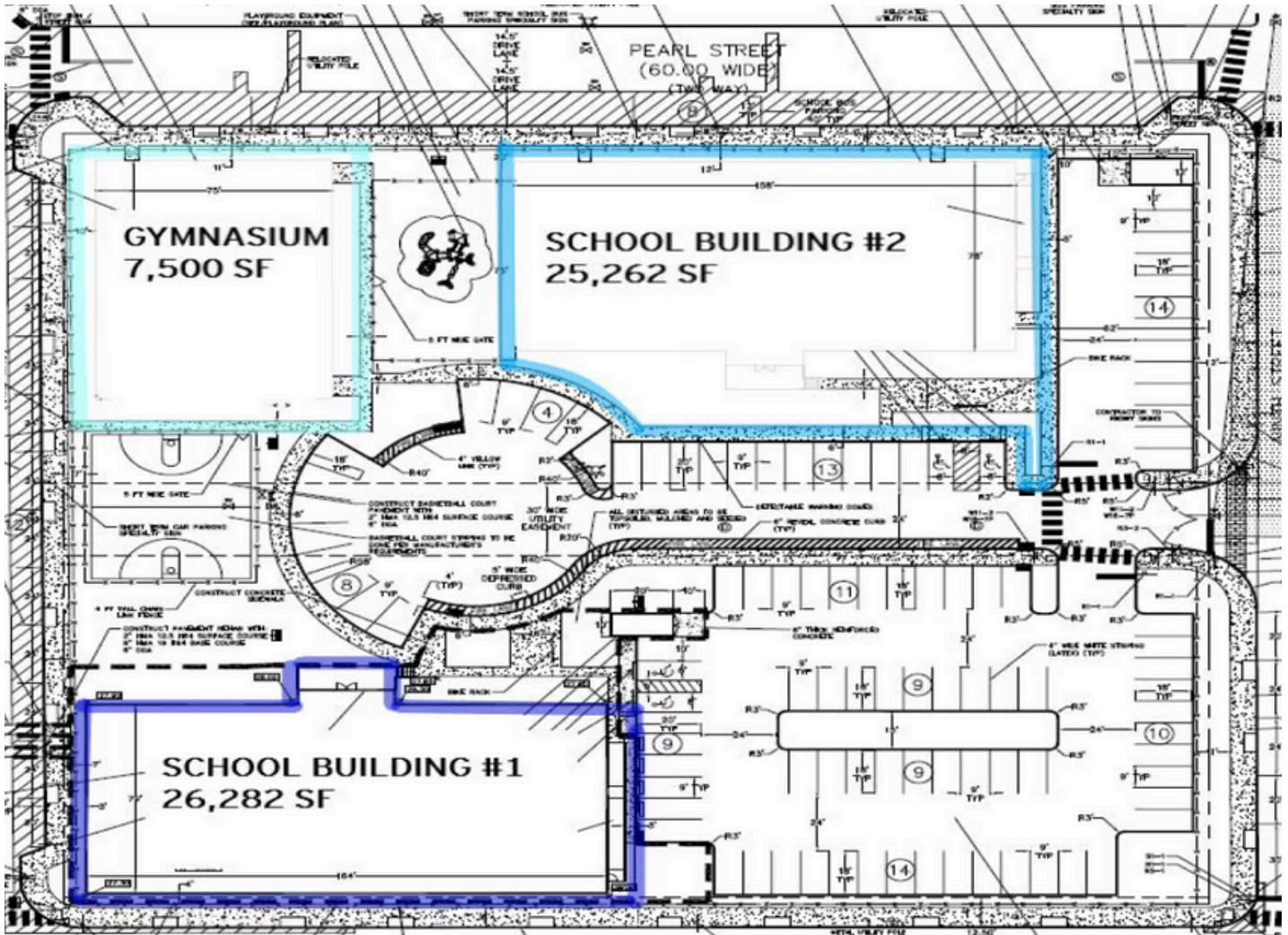
PROPERTY AREA/HIGHLIGHTS

- Campus opportunity available for sale
- +/-7,500 gymnasium with full-sized basketball court
- Two (2) story buildings consisting of +/-13,500 SF/floor
- 50 classrooms, 2 large cafeterias, handicap accessible buildings with elevators, restrooms, outdoor play areas & drop off zone
- Built in 2014
- 80 parking spaces
- Located in redevelopment district
- Located off Admiral Wilson Boulevard
- Close proximity to Philadelphia and New Jersey Suburbs
- Last exit before the Ben Franklin Bridge with close proximity to public transportation and PATCO speed line



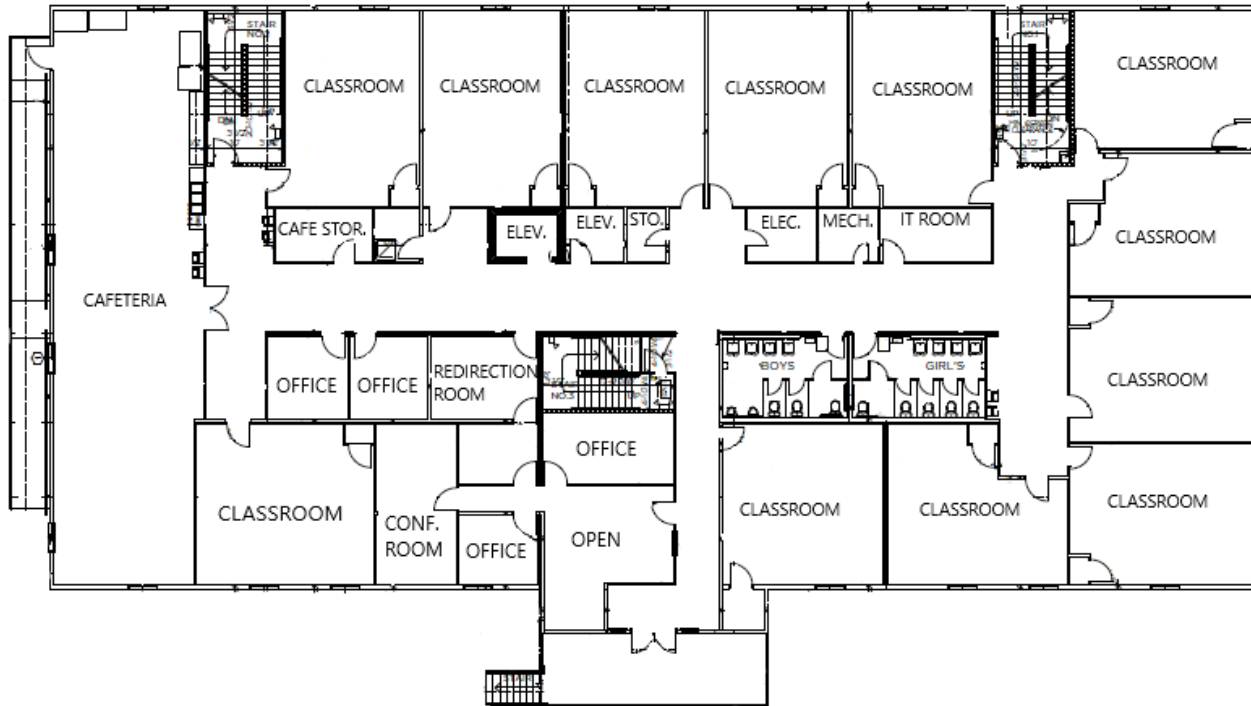
The foregoing information was furnished to us by sources which we deem to be reliable, but no warranty or representation is made as to the accuracy thereof. Subject to correction of errors, omissions, change of price, prior sale or withdrawal from market without notice.

SITE PLAN

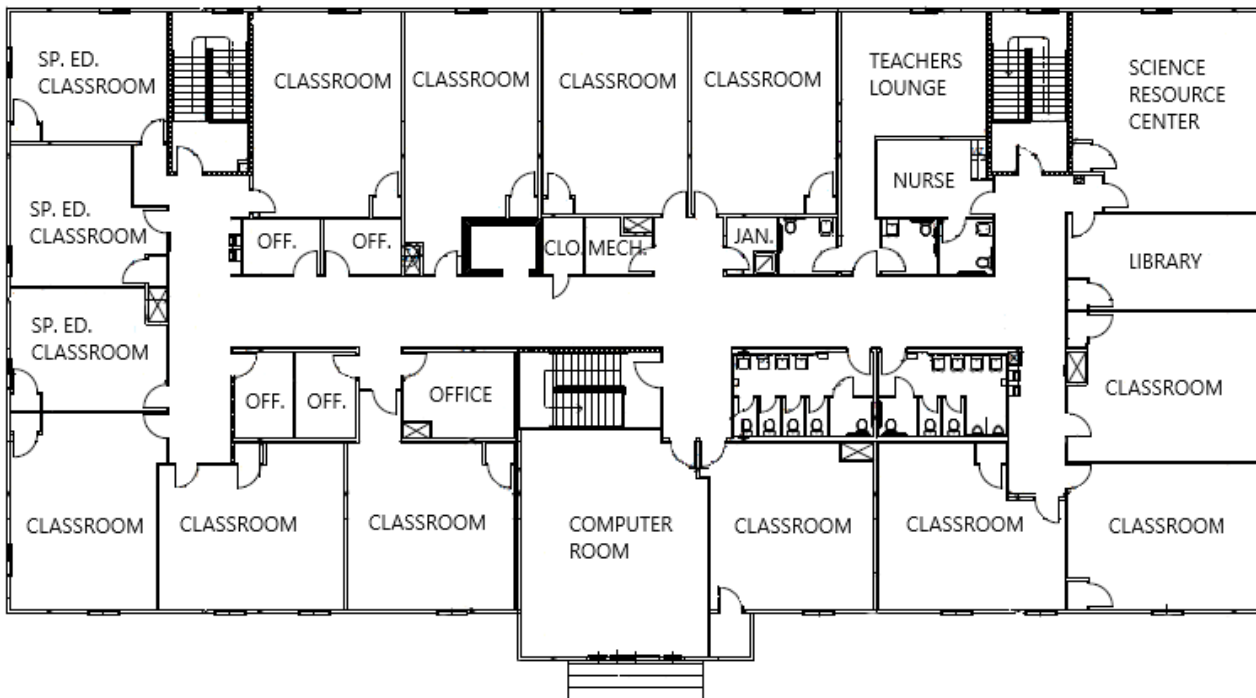


The foregoing information was furnished to us by sources which we deem to be reliable, but no warranty or representation is made as to the accuracy thereof. Subject to correction of errors, omissions, change of price, prior sale or withdrawal from market without notice.

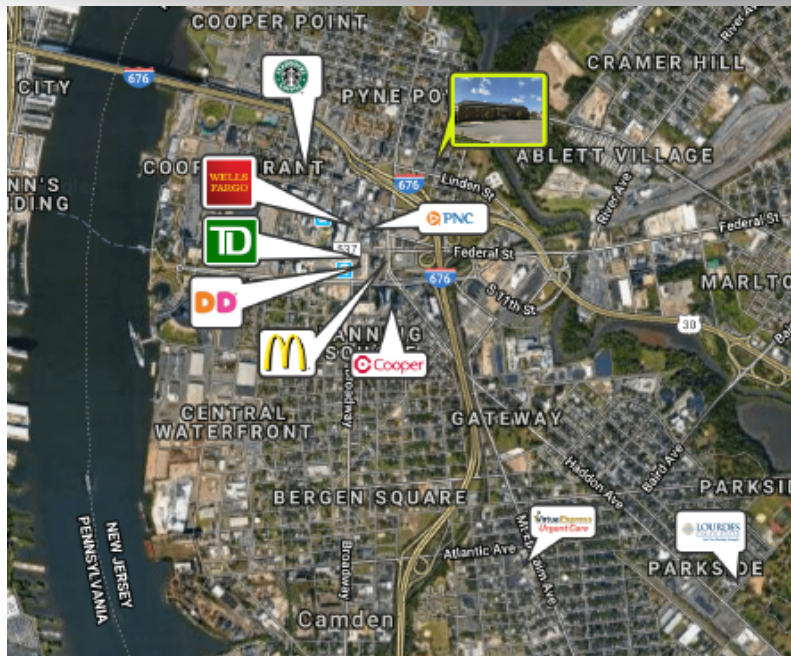
FLOOR PLAN - FIRST FLOOR



FLOOR PLAN - SECOND FLOOR



The foregoing information was furnished to us by sources which we deem to be reliable, but no warranty or representation is made as to the accuracy thereof. Subject to correction of errors, omissions, change of price, prior sale or withdrawal from market without notice.



ROUTE 676: .2 Miles
ROUTE 130: 2.3 Miles
ROUTE 38: 2.5 Miles
I-295: 6 Miles
CENTER CITY: 2.9 Miles



Bethany Brown
 Vice President
 267.226.6602
 bethany.brown@wolfcre.com

The foregoing information was furnished to us by sources which we deem to be reliable, but no warranty or representation is made as to the accuracy thereof. Subject to correction of errors, omissions, change of price, prior sale or withdrawal from market without notice.