

For Lease

1701 N San Fernando Blvd Burbank | CA



Presented By:

Scott Cox
818.244.3000

scott@pacwestonline.com
DRE#01070703

Ron Rohrer
818.309.0628

ron@pacwestonline.com
DRE#01918399

Chris Rohrer
818.624.1180

chris@pacwestonline.com
DRE#02018754

Randy Rohrer
818.244.3000

randy@pacwestonline.com
DRE#00672287



Property Information

Available SF: 2,970 SF

Asking Price: \$8,760 (\$2.95/SF)

Lease Type: NNN

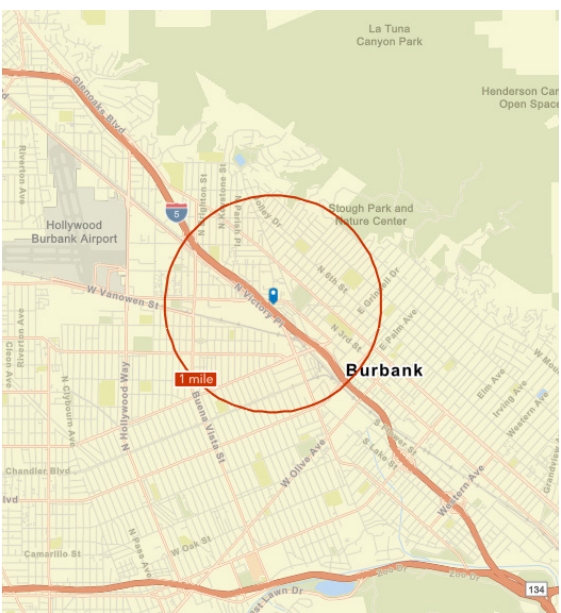
Land SF: 11,004

Zoning: [NSFC](#)

Parking: 12+ (Gated)

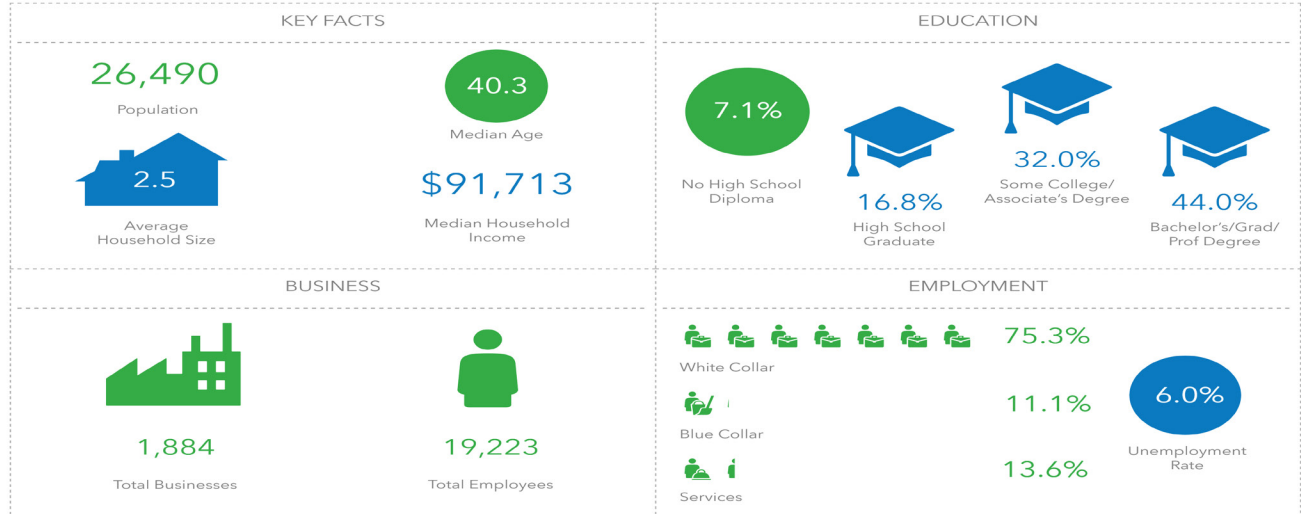
Power: 200 Amp; 3 Phase

- › Adjacent to the Empire Fwy Ramps
- › Air Conditioned
- › Large Gated Yard
- › 2 GL Doors
- › Great Freeway Access
- › Ideal for Contractor



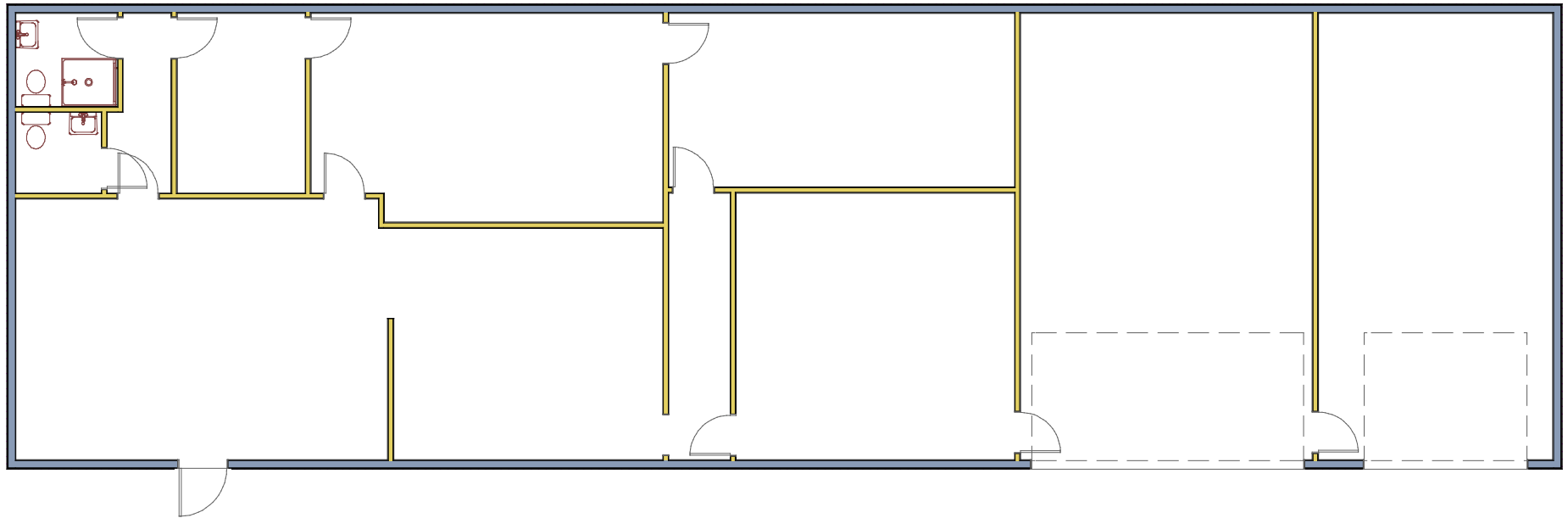
Key Facts

1701 N San Fernando Blvd, Burbank, California, 91504
Ring of 1 mile



The facts contained herein, while not guaranteed as to accuracy, are accurate to the best of our knowledge and belief.

Floor Plan



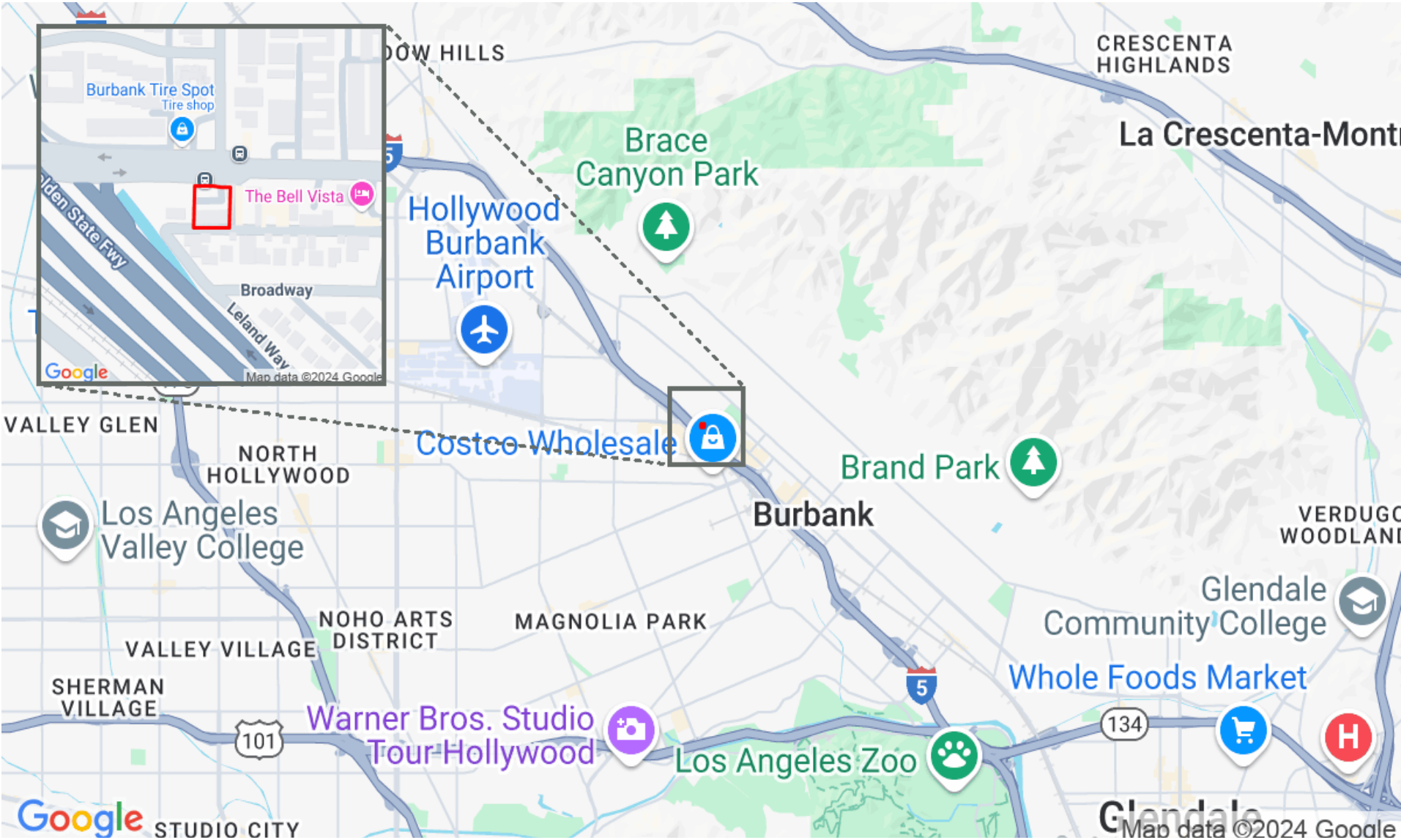
Map Location



1701 N SAN FERNANDO BLVD

Pacific West Business Properties, Inc.

6624 San Fernando Road Glendale, CA 91201 | 818-244-3000



Pictures



Pictures

