

1970 Addition  
Elev. 34'-0" to bottom of truss

Locker room & Office area

Drive through

55' Tractor Trailer

25 ton EOT crane

25 ton EOT crane

25 ton EOT crane

25 ton EOT crane

25 ton EOT crane

25 ton EOT crane

25 ton EOT crane

25 ton EOT crane

25 ton EOT crane

25 ton EOT crane

25 ton EOT crane

25 ton EOT crane

25 ton EOT crane

25 ton EOT crane

25 ton EOT crane

25 ton EOT crane

25 ton EOT crane

25 ton EOT crane

25 ton EOT crane

25 ton EOT crane

25 ton EOT crane

25 ton EOT crane

25 ton EOT crane

25 ton EOT crane

25 ton EOT crane

25 ton EOT crane

25 ton EOT crane

25 ton EOT crane

25 ton EOT crane

25 ton EOT crane

25 ton EOT crane

25 ton EOT crane

25 ton EOT crane

25 ton EOT crane

25 ton EOT crane

25 ton EOT crane

25 ton EOT crane

25 ton EOT crane

25 ton EOT crane

25 ton EOT crane

25 ton EOT crane

25 ton EOT crane

25 ton EOT crane

25 ton EOT crane

25 ton EOT crane

25 ton EOT crane

25 ton EOT crane

25 ton EOT crane

25 ton EOT crane

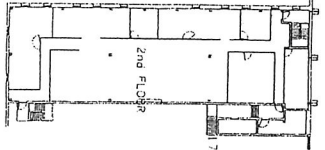
25 ton EOT crane

42,000 S/F

337'-0.00"

507'-5.72"

589'-11.32"



2nd FLOOR

7'-8 1/2"

FRONT DR.

FIRST FLOOR

CONC. WALL

KITCHEN

WOMEN

REST ROOM

REST ROOM

REST ROOM

REST ROOM

REST ROOM

REST ROOM

REST ROOM

REST ROOM

REST ROOM

REST ROOM

REST ROOM

REST ROOM

REST ROOM

REST ROOM

REST ROOM

REST ROOM

REST ROOM

REST ROOM

REST ROOM

REST ROOM

REST ROOM

REST ROOM

REST ROOM

REST ROOM

REST ROOM

REST ROOM

REST ROOM

121'-6"

81'-5"

77'-9"

81'-1"

