

Umatilla Basin Properties, LLC

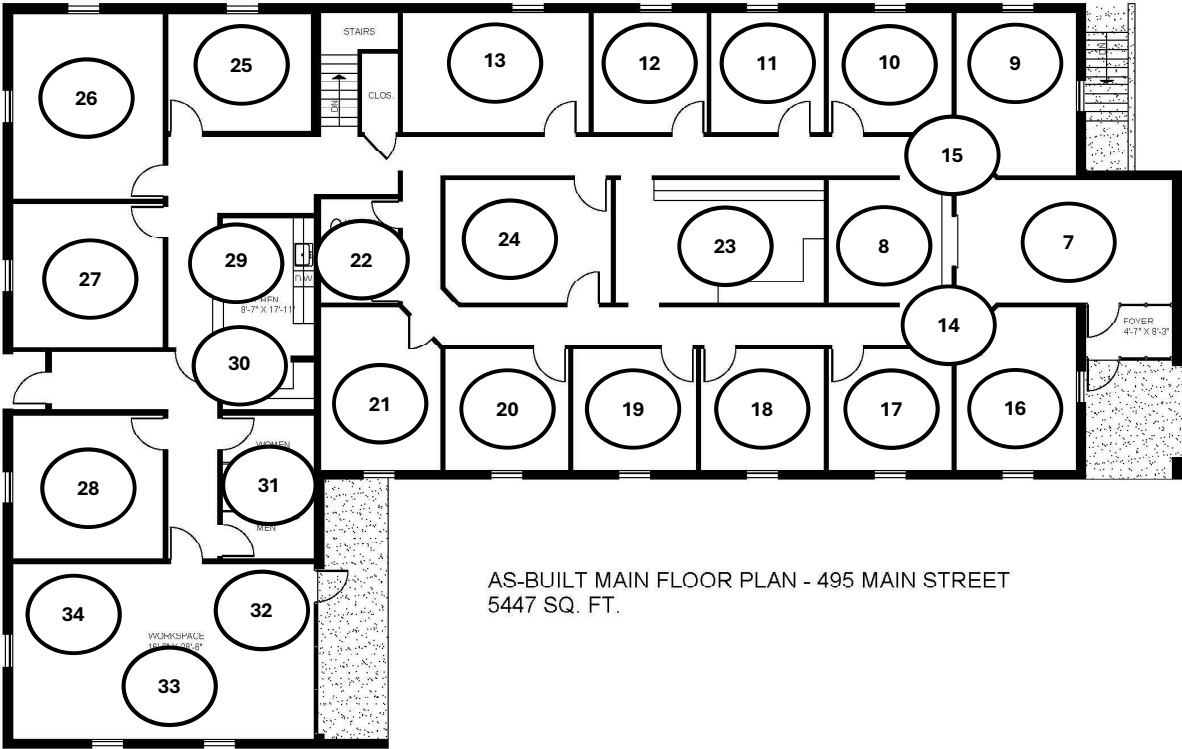
495 E Main Street

Hermiston, Oregon 97838



Figure 1

- 5447 Square feet
- 3246 Square feet basement
- 16 Parking spaces
- General office space / Storage
- Reception area
- 17+ office spaces+ additional open workspaces
- Kitchen facilities
- 4 Restrooms
- Office furnishings upon request



AS-BUILT MAIN FLOOR PLAN - 495 MAIN STREET
5447 SQ. FT.



Figure 2



Figure 3



Figure 4

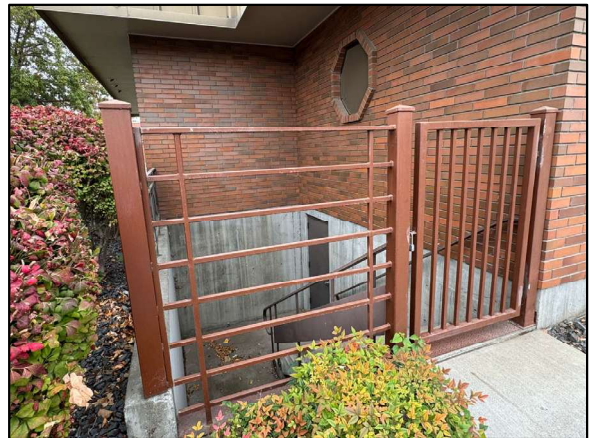


Figure 5



Figure 6



Figure 7



Figure 8



Figure 9



Figure 10



Figure 11

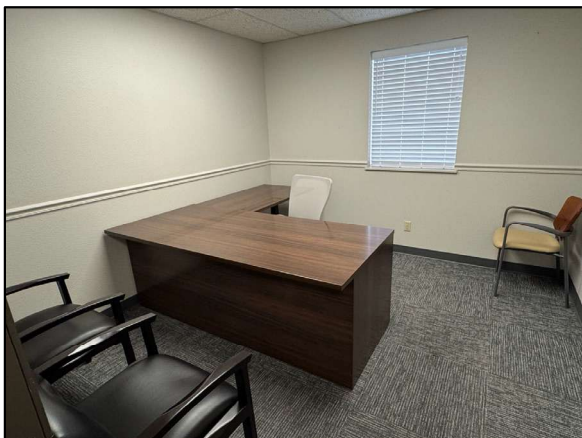


Figure 12



Figure 13



Figure 14

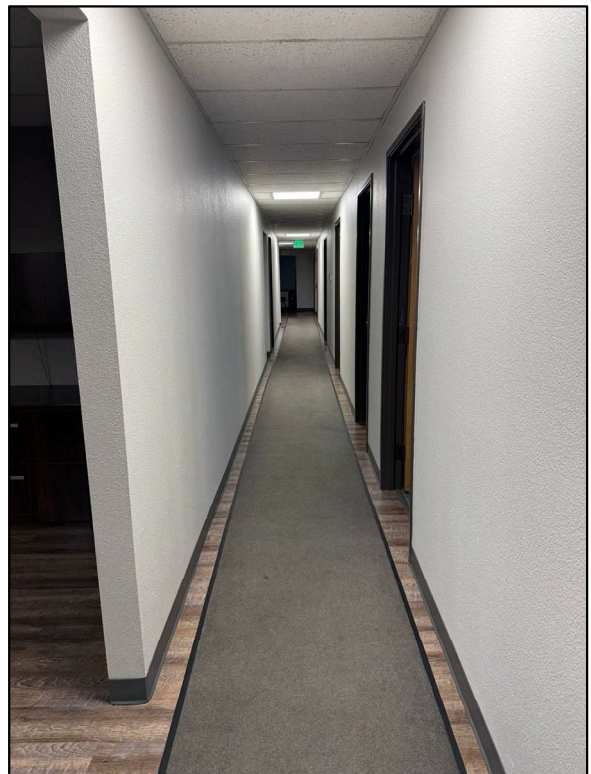


Figure 15

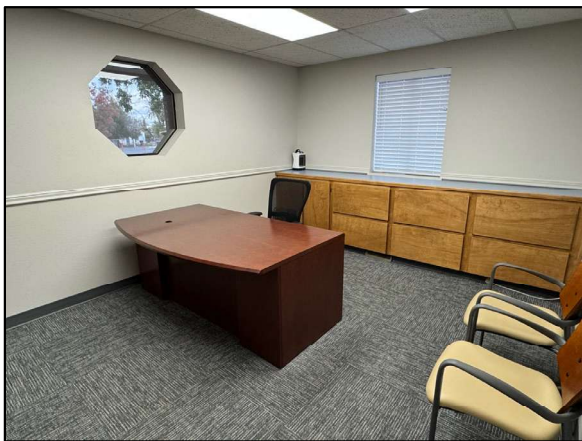


Figure 16

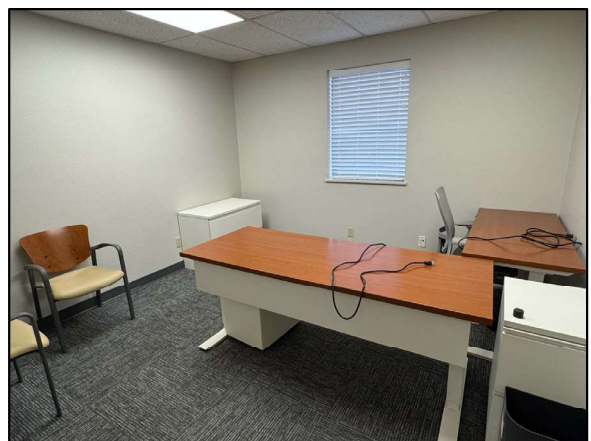


Figure 17



Figure 18



Figure 19



Figure 20



Figure 21

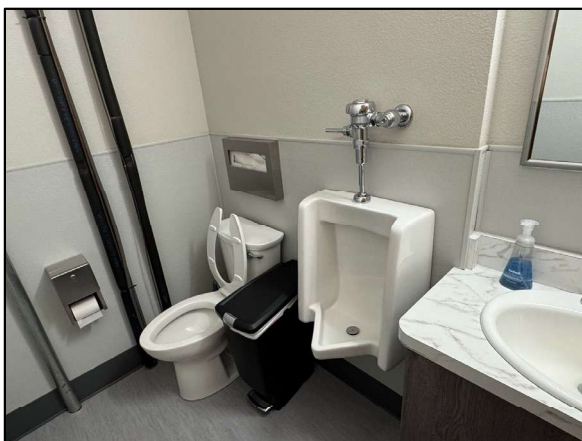


Figure 22



Figure 22



Figure 23



Figure 24



Figure 25



Figure 26



Figure 27

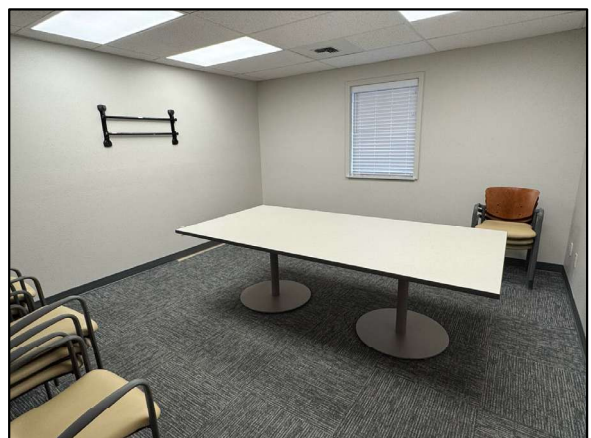


Figure 28



Figure 29



Figure 30



Figure 31



Figure 31



Figure 32



Figure 33



Figure 34





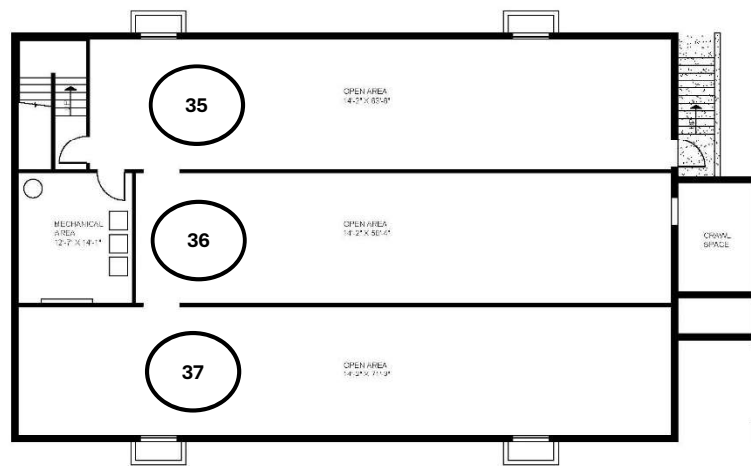
Figure 35



Figure 36



Figure 37



AS-BUILT BASEMENT FLOOR PLAN - 495 MAIN STREET
3246 SQ. FT.