

CROSSROADS CORPORATE CENTER

XIV

20300 WATER TOWER BLVD.
BROOKFIELD, WI



SHAUN DEMPSEY

direct 414.270.4104

cell 414.699.7674

shaun.dempsey@transwestern.com



TRANSWESTERN

REAL ESTATE
SERVICES

310 W. Wisconsin Ave., Ste. ME110
Milwaukee, WI 53203

CROSSROADS CORPORATE CENTER

XIV

GENERAL INFORMATION

Introducing 20300 Water Tower Blvd, a spacious 41,553 square foot building that offers an unbeatable location with easy access to the freeway. This building boasts a striking façade with available signage that provides high visibility to the traffic on I-94. With ample parking, this property is perfect for any business looking to establish a strong presence in the area. Don't miss out on this fantastic opportunity to lease in one of the most desirable locations around.

BUILDING SIZE	41,553 SF
NUMBER OF FLOORS	2
AVAILABLE SPACE	<u>FIRST FLOOR</u> Suite 175 - 5,035 RSF (click here for virtual tour) <u>SECOND FLOOR</u> Suite 200 - 5,202 RSF (click here for virtual tour) Suite 201 - 2,455 RSF
LEASE RATE	\$22.00 per SF Gross
BUILDING CLASS	A
PARKING SPACES/RATIO	214 Spaces / 5 per thousand SF of rental space
SIGNAGE	Building Facade Signage



20300 WATER TOWER BLVD.
BROOKFIELD, WI

Building Attributes



Prime Location with
Freeway Accessibility



Prominent Signage
Opportunity



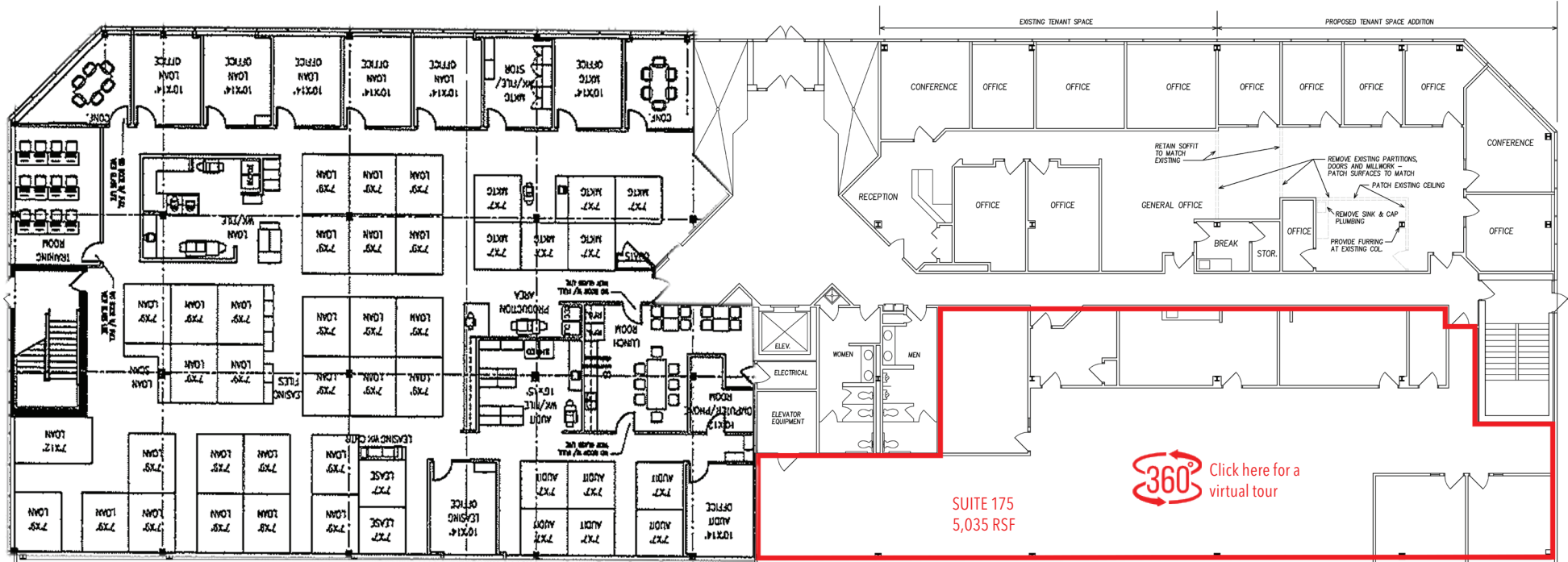
Excellent
Demographics

CROSSROADS CORPORATE CENTER

XIV

FIRST FLOOR PLAN

20300 WATER TOWER BLVD.
BROOKFIELD, WI



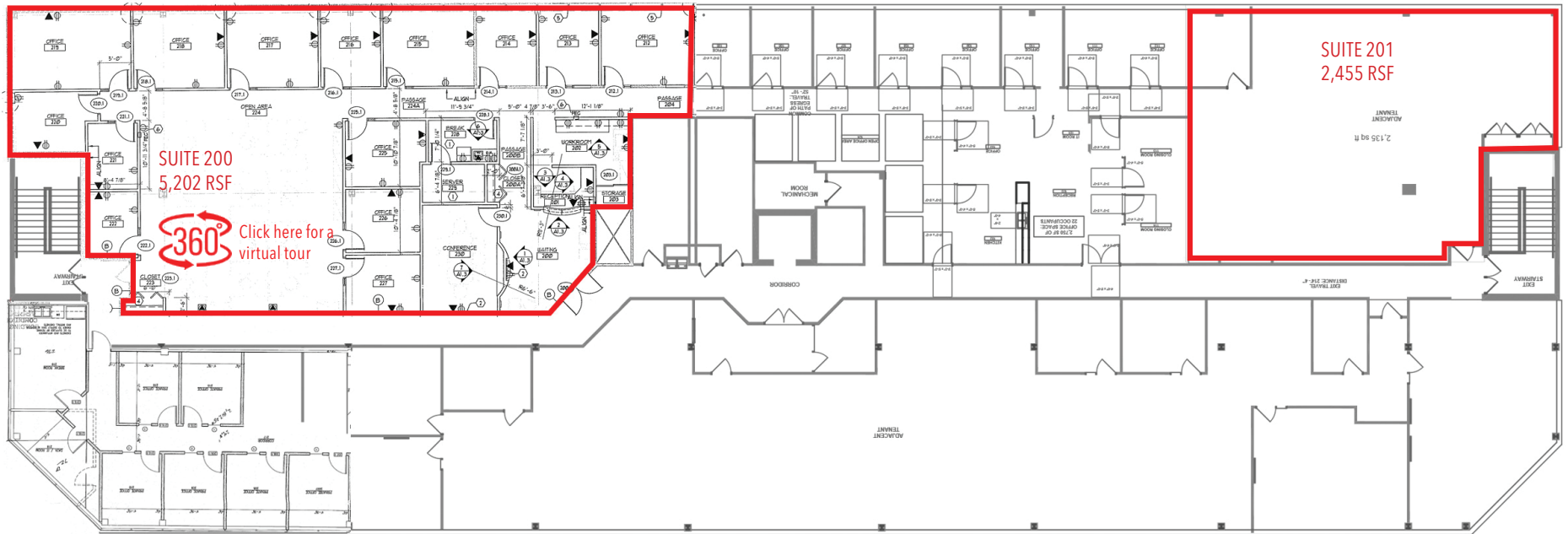
SUITE 175
5,035 RSF

[360° Click here for a virtual tour](#)

CROSSROADS CORPORATE CENTER

XIV

SECOND FLOOR PLAN



SUITE 201
2,455 RSF

SUITE 200
5,202 RSF

360° Click here for a
virtual tour

20300 WATER TOWER BLVD.
BROOKFIELD, WI





CROSSROADS CORPORATE CENTER

XIV

DEMOGRAPHICS - 1 MILE



5,666

Population

52.0

Median Age



633

Total Businesses



10,064

Total Employees



1.93

Avg Household
Size



\$105,761

Median Household
Income



\$74,878

Per Capita
Income



\$285,522

Median
Net Worth

Source: U.S. Census Bureau and Esri forecasts

20300 WATER TOWER BLVD.
BROOKFIELD, WI



CROSSROADS CORPORATE CENTER

XIV

DEMOGRAPHICS - 3 MILES



40,528

Population

44.6

Median Age



2,968

Total Businesses



48,950

Total Employees



2.33

Avg Household
Size



\$108,279

Median Household
Income



\$64,534

Per Capita
Income

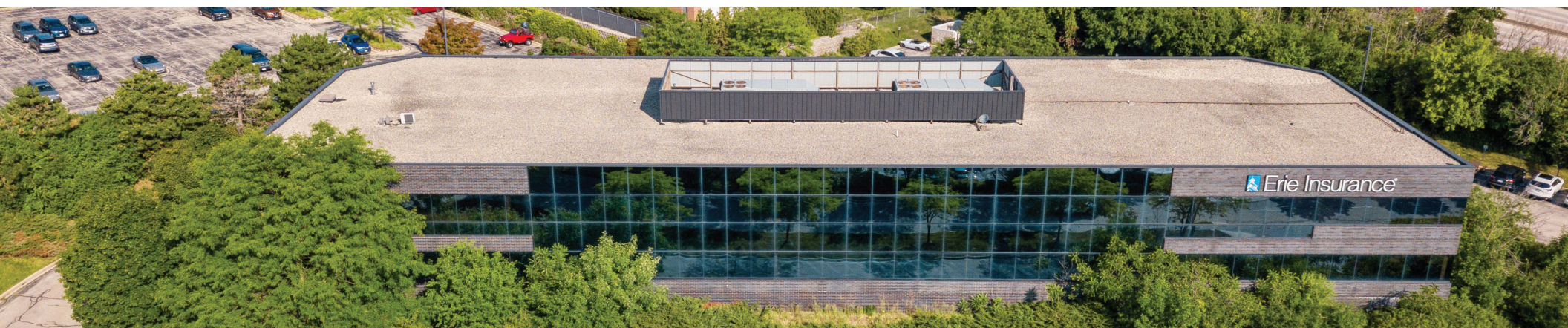


\$296,398

Median
Net Worth

Source: U.S. Census Bureau and Esri forecasts

20300 WATER TOWER BLVD.
BROOKFIELD, WI



CROSSROADS CORPORATE CENTER

XIV

DEMOGRAPHICS - 5 MILES



121,999

Population

43.6

Median Age



7,400

Total Businesses



120,608

Total Employees



2.33

Avg Household
Size



\$101,802

Median Household
Income



\$58,165

Per Capita
Income



\$261,295

Median
Net Worth

Source: U.S. Census Bureau and Esri forecasts

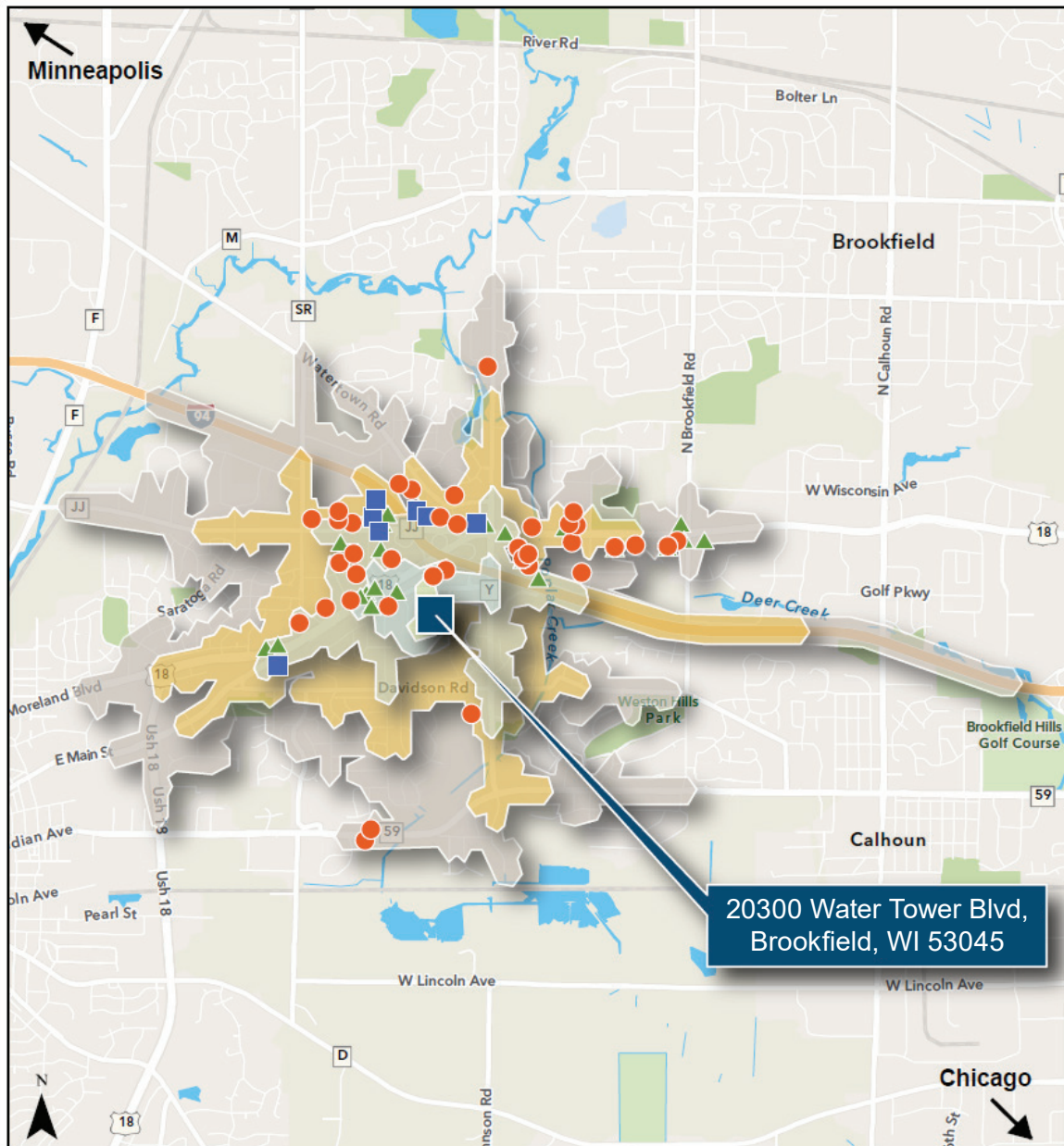
20300 WATER TOWER BLVD.
BROOKFIELD, WI



CROSSROADS CORPORATE CENTER

XIV

20300 WATER TOWER BLVD.
BROOKFIELD, WI



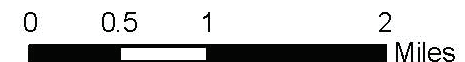
Drive Time

- ≤ 1 Minute
- ≤ 2 Minutes
- ≤ 3 Minutes
- ≤ 4 Minutes
- ≤ 5 Minutes

Area Amenities

(Within Driving Distances)

- ▲ Restaurants & Bars (34)
- Lodging (5)
- Retail Shops (48)



The information provided herein was obtained from sources believed reliable; however, Transwestern makes no guarantees, warranties or representations as to the completeness or accuracy thereof. The presentation of this property is submitted subject to errors, omissions, change of price or conditions, prior sale or lease, or withdrawal without notice.
Copyright © 2022 Transwestern.

CROSSROADS CORPORATE CENTER

XIV

20300 WATER TOWER BLVD.
BROOKFIELD, WI

