

DESOTO BUSINESS PARK

Colliers

32,544 SF

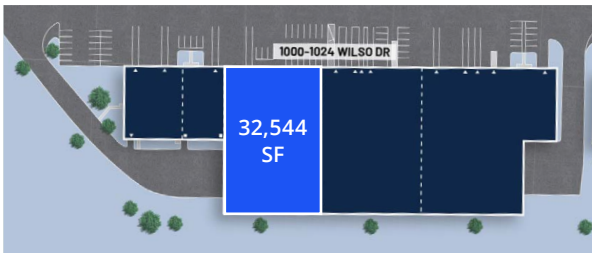
BUILDING D | 1000-1024 WILSO DRIVE, BALTIMORE, MD 21223

32,544 SF
Industrial Available for Lease

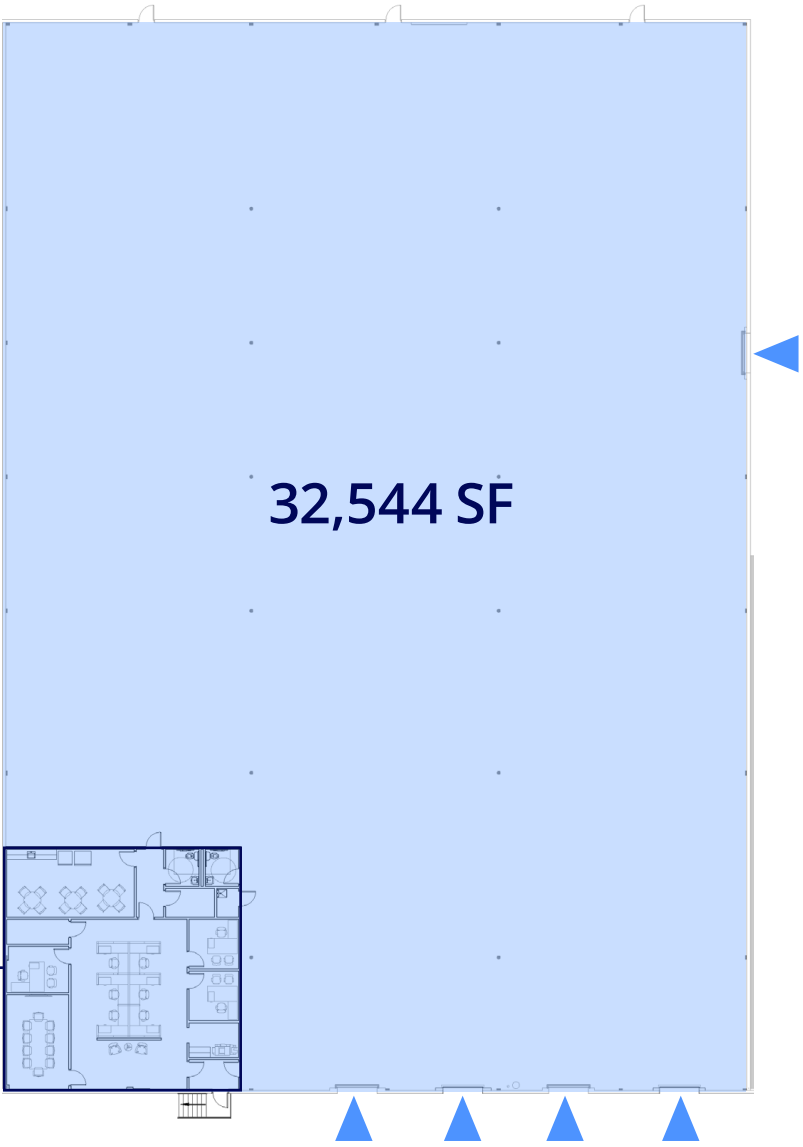
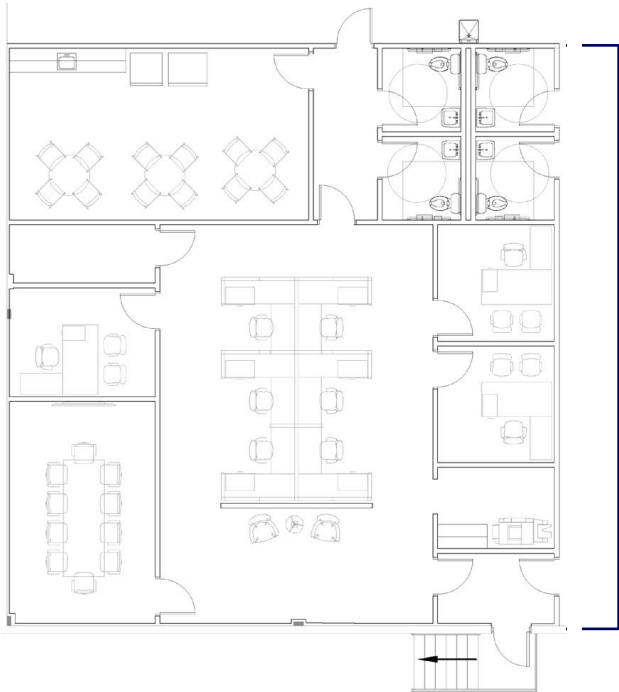
G|I|D
INDUSTRIAL

Suite 1006

Available SF	32,544 SF
Office	1,450± SF
Clear Height	24' - 25'
Loading	5 Docks
Power	400 Amps
Lighting	LED



New Spec Office



DESOTO BUSINESS PARK

Jason Sullivan, SIOR

Executive Vice President
+1 410 319 2409
jason.sullivan@colliers.com

Brian Siegel, SIOR

Executive Vice President
+1 410 319 2410
brian.siegel@colliers.com

Melissa Parrish

Associate Vice President
+1 410 319 2412
melissa.parrish@colliers.com

Tom Gentner

Executive Vice President
+1 410 319 2407
tom.gentner@colliers.com

Brian Watts

Executive Vice President
+1 410 319 2408
brian.watts@colliers.com



This document has been prepared by Colliers for advertising and general information only. Colliers makes no guarantees, representations or warranties of any kind, expressed or implied, regarding the information including, but not limited to, warranties of content, accuracy and reliability. Any interested party should undertake their own inquiries as to the accuracy of the information. Colliers excludes unequivocally all inferred or implied terms, conditions and warranties arising out of this document and excludes all liability for loss and damages arising there from. This publication is the copyrighted property of Colliers and/or its licensor(s). ©2025. All rights reserved.



GID
INDUSTRIAL