



Jones Lang LaSalle Brokerage, Inc.



# Baltic Pointe

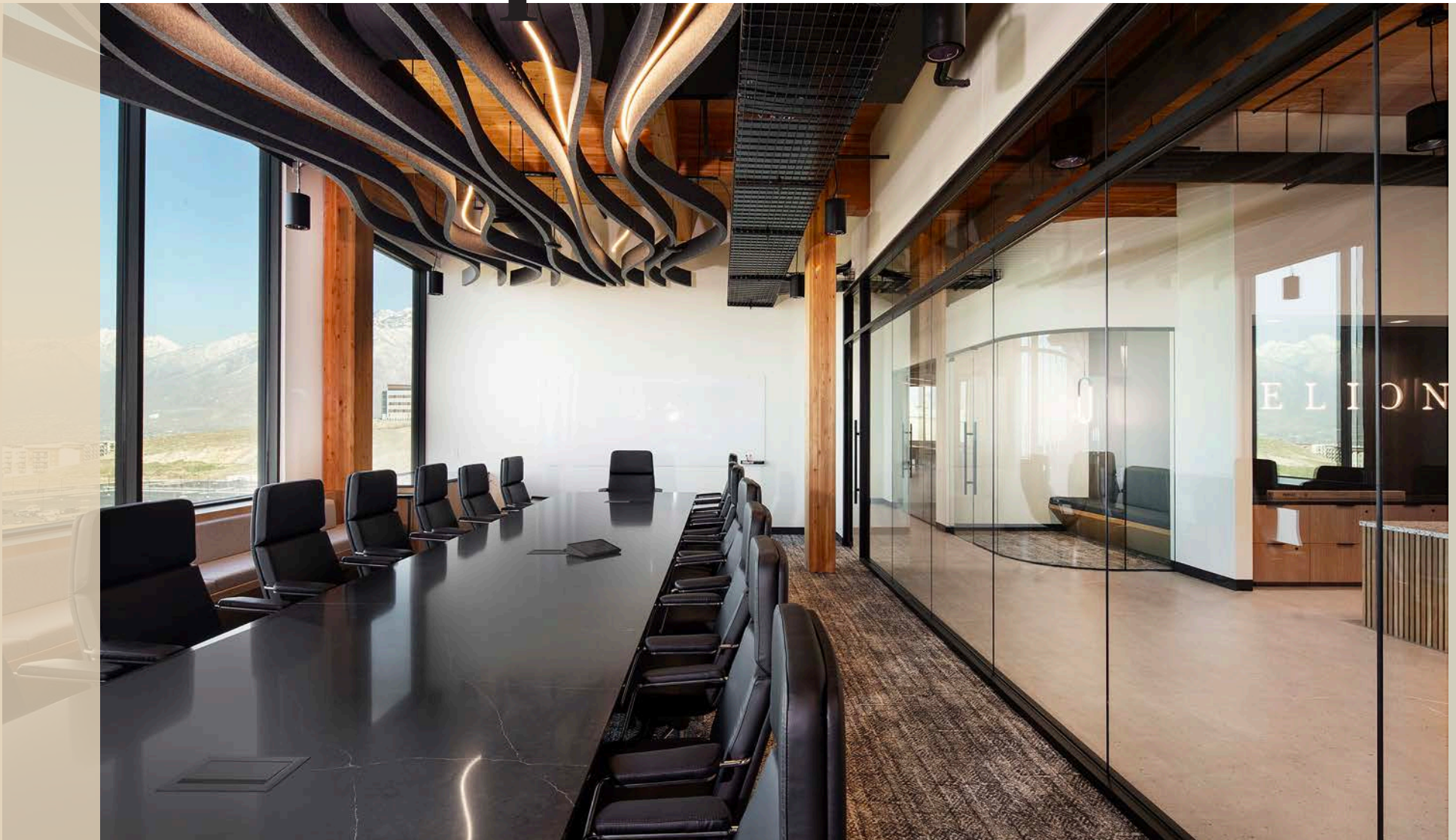
14761 S Future Way  
Draper, Utah 84020

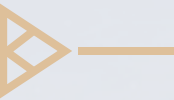
PELION

HB WORKPLACES MillerKnoll

**48,137** RSF  
available creative space &  
wood structure  
ready for occupancy

# Baltic Pointe is a space that Empowers





**Baltic Pointe** is Utah's first mass timber office building with unique interiors that are unlike anything else in the market. Expertly designed with public spaces to create new connections and amenities to enhance your daily experience.



**130,000 RBA**  
**5 Stories**



**Spec Suites**  
**Available Now**



**High Performance,**  
**Low Energy Use**  
**Building**



**48,137 RSF**  
**Available**



**\$37.00 - \$38.00/RSF**  
**Full Service**



**Mass Timber**  
**Structure**



**Structured/  
Covered  
Parking**



**EV Charging**  
**Stations**



**Lobby Lounge**  
**Outdoor Patio**



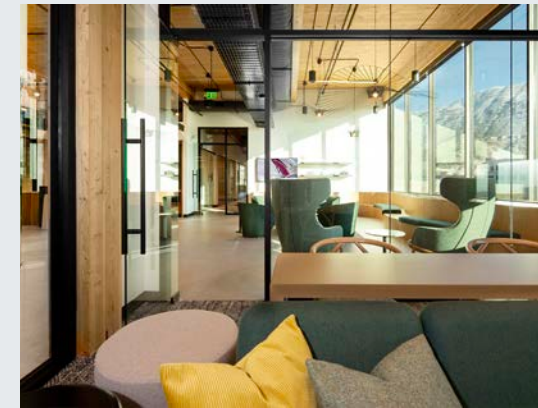
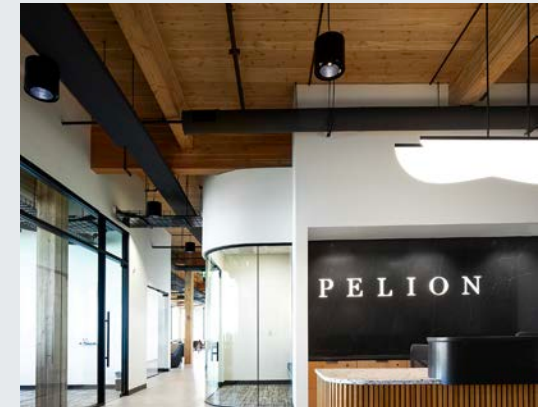
**Fitness Center**  
**& Showers**



**Salt Lake**  
**County Views**



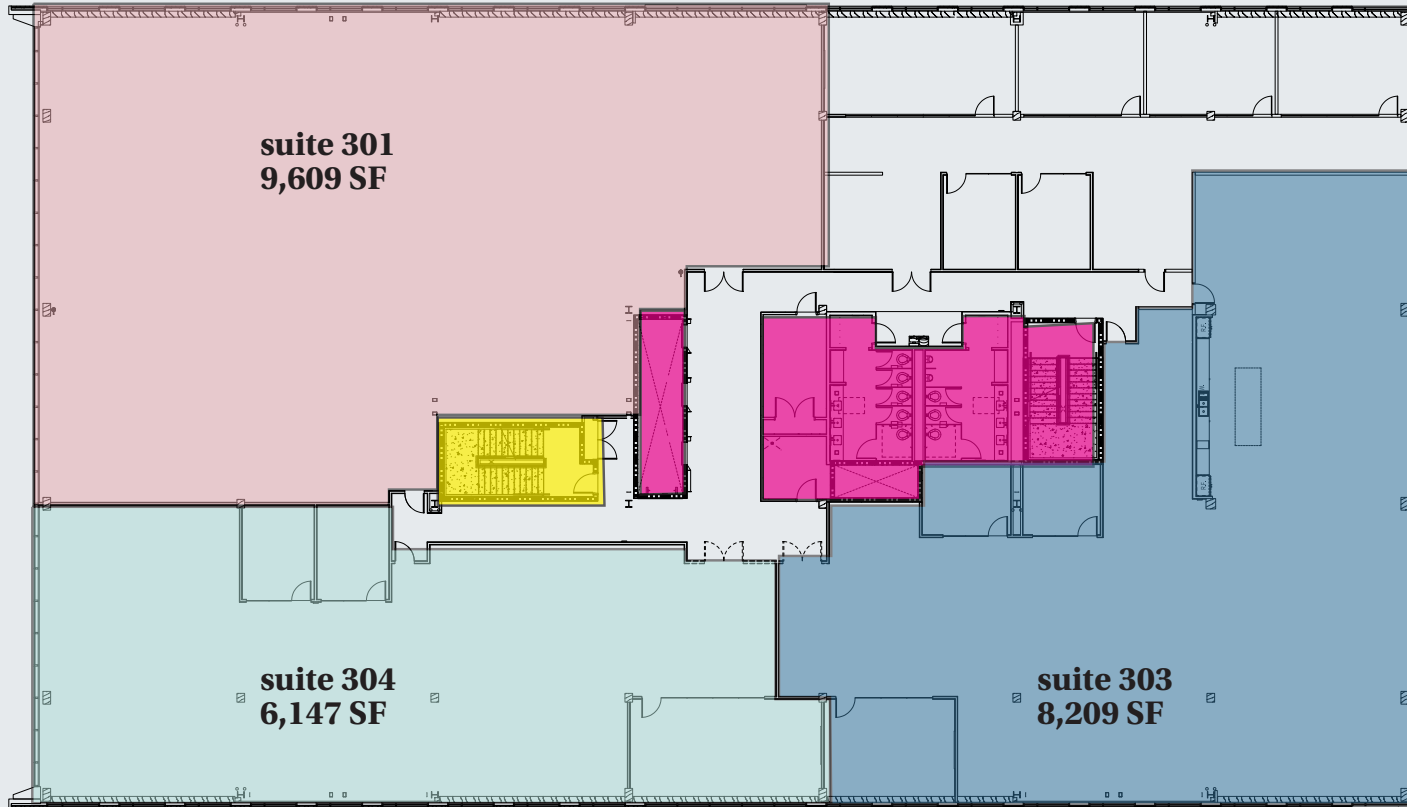
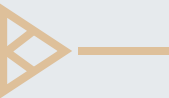
**Pickleball**  
**Courts Onsite**



# Floor Two

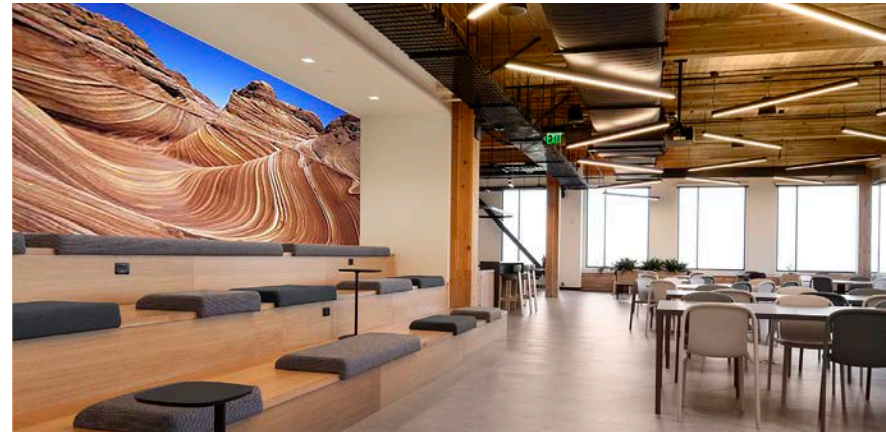
4,904 - 24,172 RSF Available

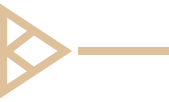
Please note, suites are conceptual and floor is in shell condition



# Floor Three

6,147 - 23,965 RSF Available





# Area Map

## Proposed Bus Rapid Transit Line (BRT)



## Drive Times

**8** minutes to Thanksgiving Point

**19** minutes to Cottonwood Heights

**24** minutes to Downtown Salt Lake City

**27** minutes to Provo



**David Nixon**

+ 1 801 456 9518

[david.nixon@jll.com](mailto:david.nixon@jll.com)

**Jillian Johnson Hanks**

+ 1 801 456 9517

[jillian.johnson@jll.com](mailto:jillian.johnson@jll.com)

**Jones Lang LaSalle Brokerage, Inc.**

©2025 Jones Lang LaSalle LP, Inc. All rights reserved. All information contained herein is from sources deemed reliable; however, no representation or warranty is made to the accuracy thereof.