

# FOR LEASE

## 1941 Frank Scott Parkway East, Suite C Shiloh, IL 62269



### PROFESSIONAL OFFICE/ MEDICAL SPACE

- 3,351 Square Feet Available
- 8 private offices, reception/waiting area, break room, large conference room and common area restrooms
- Built in 2009
- High end finishes throughout the suite
- Monument signage available along Frank Scott Parkway
- Professionally Managed
- Close to I-64, Green Mount Road and located between Memorial East and St. Elizabeth's Hospitals
- Downtown St. Louis less that 15 miles away
- Minutes from Scott Air Force Base
- **Lease Rate: \$15.00 PSF plus NNN \$11.00 PSF**

#### Contact:

KELLY HULVEY, Broker  
Kelly@choosekwg.com  
618-210-4702 mobile

DAVE KUNKEL, Broker  
Dave@choosekwg.com  
618-977-1846 mobile

618-202-4500 office  
3318 N IL Street  
Swansea, IL 62226  
Choosekwg.com

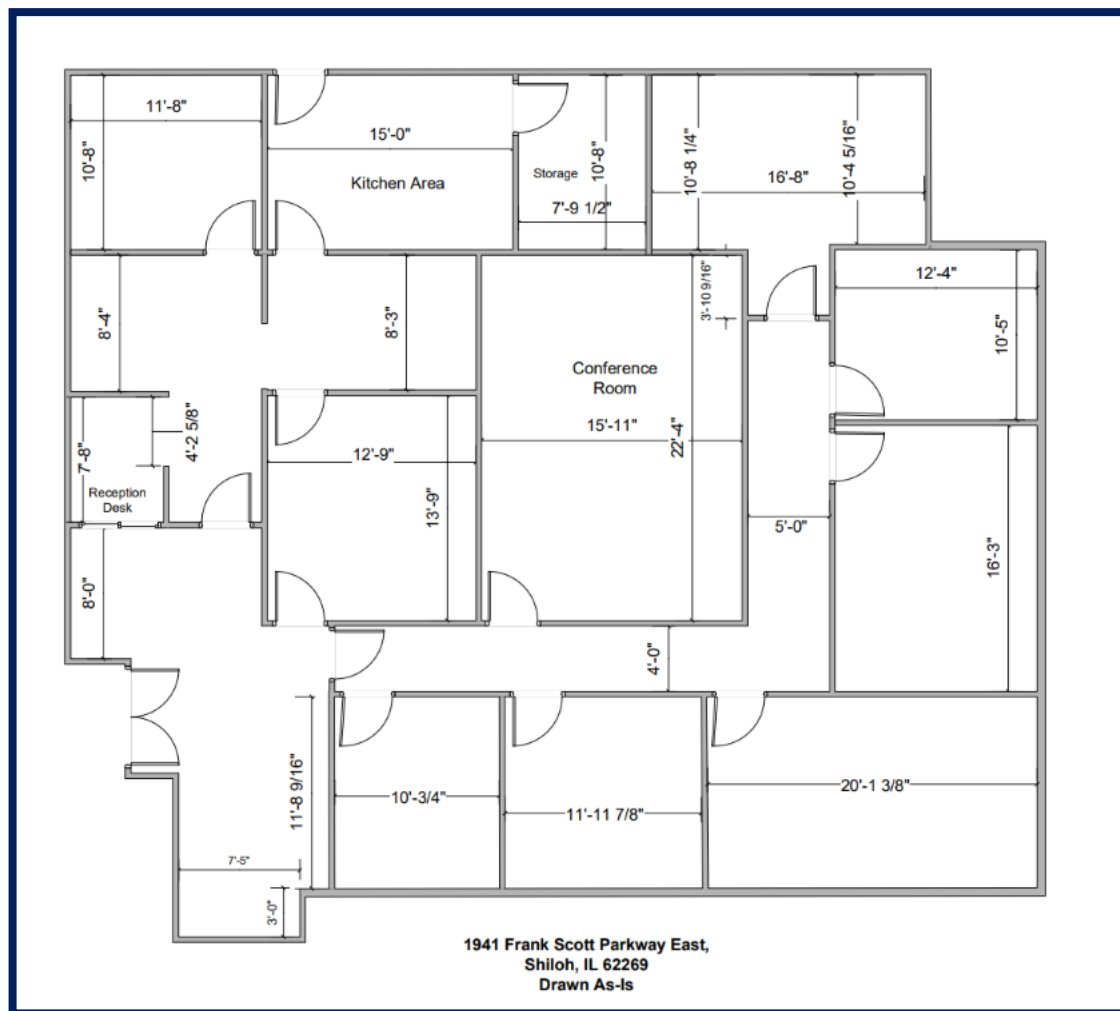
LUKE ALLAN  
Luke@choosekwg.com  
618-578-3598 Mobile



*Information herein is not warranted and subject to change without notice. We assume no liability for errors on items included in quoted price. Broker makes no representation as to the environmental condition of property and recommends Purchaser's / Tenant's independent investigation.*

# FLOOR PLAN

1941 Frank Scott Parkway East  
Shiloh, IL



# PHOTOS



1941 Frank Scott Parkway East  
Shiloh, Illinois 62269

[WWW.CHOOSEKWG.COM](http://WWW.CHOOSEKWG.COM)



*Information herein is not warranted and subject to change without notice. We assume no liability for errors on items included in quoted price. Broker makes no representation as to the environmental condition of property and recommends Purchaser's / Tenant's independent investigation.*