

FOR SALE OR LEASE

PROFESSIONAL OFFICE SPACE | $\pm 2,187$ SF - $\pm 36,340$ SF



Sale Terms

- Sale Price: \$10,700,000
- Cash, CNL

Lease Terms

- Base Rent: \$1.55/SF
- Est. Nets: \$0.55/SF
- Type of Lease: Net, Net, Net

Building Details

- 1st Floor Space: 19,728 SF
 - 2nd Floor Space: 16,612 SF
 - Restrooms: Common
 - Elevator Served: Yes
 - Zoning: PD/M-1
 - Load Factor: 11.6% - 19.8%*
- *Depends on suite configuration*

2811 Airpark Drive | Santa Maria, CA

Office Spaces Available from $\pm 2,187$ SF - $\pm 36,340$ SF

Chris Garner
805.928.2800 ext. 104
CGarner@PacificaCRE.com
Lic #01010310

Brian LaCabe
805.928.2800 ext. 103
BLacabe@PacificaCRE.com
Lic #01026699



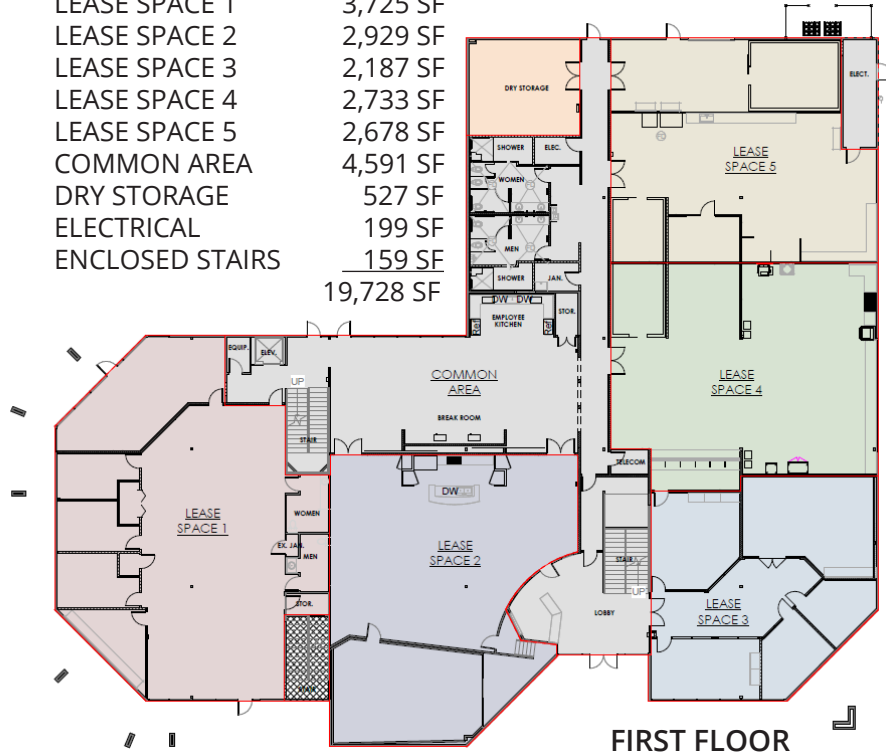
PO Box 250 | Santa Maria, CA 93456 | PacificaCommercialRealty.com

Information contained herein has been obtained from the owner of the property or from other sources deemed reliable. We have no reason to doubt its accuracy, but we do not guarantee it.

FOR SALE OR LEASE 2811 AIRPARK DRIVE | SANTA MARIA, CA

USABLE AREAS

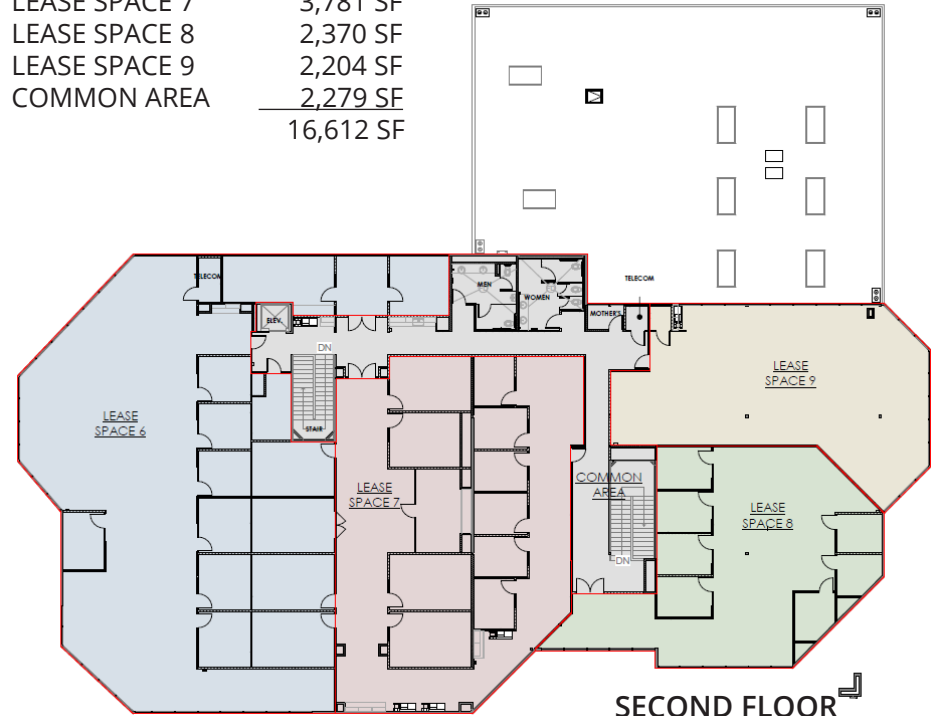
| | |
|-----------------|------------------|
| LEASE SPACE 1 | 3,725 SF |
| LEASE SPACE 2 | 2,929 SF |
| LEASE SPACE 3 | 2,187 SF |
| LEASE SPACE 4 | 2,733 SF |
| LEASE SPACE 5 | 2,678 SF |
| COMMON AREA | 4,591 SF |
| DRY STORAGE | 527 SF |
| ELECTRICAL | 199 SF |
| ENCLOSED STAIRS | 159 SF |
| | <u>19,728 SF</u> |



FIRST FLOOR

USABLE AREAS

| | |
|---------------|------------------|
| LEASE SPACE 6 | 5,978 SF |
| LEASE SPACE 7 | 3,781 SF |
| LEASE SPACE 8 | 2,370 SF |
| LEASE SPACE 9 | 2,204 SF |
| COMMON AREA | 2,279 SF |
| | <u>16,612 SF</u> |



SECOND FLOOR

Beautiful Class "A" office space in a recently remodeled professional building in Santa Maria's R&D sector. Attached floor plans show various suite configurations for multi-tenant occupancy on each floor. Building amenities include a large break area with a gourmet kitchen, common restrooms with showers and a larger storage area. In addition, there are 2 laboratory spaces with shared walk-in cooler that can be leased separately or as part of a Tenant space. Note: the building can be leased to a single tenant, two (2) tenants or multiple tenants.

Chris Garner
805.928.2800 ext. 104
CGarner@PacificaCRE.com
Lic #01010310

Brian LaCabe
805.928.2800 ext. 103
BLacabe@PacificaCRE.com
Lic #01026699



PO Box 250 | Santa Maria, CA 93456 | PacificaCommercialRealty.com

Information contained herein has been obtained from the owner of the property or from other sources deemed reliable. We have no reason to doubt its accuracy, but we do not guarantee it.

FOR SALE OR LEASE 2811 AIRPARK DRIVE | SANTA MARIA, CA



Chris Garner
805.928.2800 ext. 104
CGarner@PacificaCRE.com
Lic #01010310

Brian LaCabe
805.928.2800 ext. 103
BLacabe@PacificaCRE.com
Lic #01026699



PO Box 250 | Santa Maria, CA 93456 | PacificaCommercialRealty.com

Information contained herein has been obtained from the owner of the property or from other sources deemed reliable. We have no reason to doubt its accuracy, but we do not guarantee it.