

# Ultra-rare medical co-op sale opportunity in the prestigious 20 Plaza St E known for its landmark architecture!



## 20 Plaza East #A15, Ground Floor

ASKING PRICE: \$1,250,000 | Maintenance \$3,930

**SEE MORE ON CORCORAN.COM: WEB# 22421469**

Ultra-rare medical co-op sale opportunity in the prestigious 20 Plaza St E known for its landmark architecture!

This location cannot be matched! Offered for sale is unit #A15 currently configured as a medical space perfect for any medical group or solo practice. Boasting 2050SF of square footage complete with HVAC, waiting area, reception, full kitchenette, storage/closets, and multiple treatment and consult rooms. The office is configured with 6 treatment & 3 consult rooms with plumbing and can easily be expanded to 8 treatment rooms. "As Is" the space is Exceptional and Move in ready and well suited for Hi Design Medical Practice.

Being the corner unit enjoy an abundance of natural light and your own private entrance. The space is adaptable to any medical specialty such as Primary Care Physician, Dentist, Physical Therapy, Chiropractor, Therapist/Counselor, Dermatology, Optometrist, Podiatrist, and Pediatrician.

This stunning maisonette has entrances both in the front, nestled within the professionally landscaped garden, or through the elegant, attended Art Deco lobby. Be across from Grand Army Plaza and historic Prospect Park, and an easy walk to Brooklyn's cultural heart: The Museum, Botanic Garden and Library. The 2/3 and B/Q trains are about three stops into Downtown Brooklyn and Manhattan. A heartbeat away from the neighborhood's amazing cafes, shops, and restaurants. This combination of space, quality, location, and value allows for a unique opportunity that should not be missed.

### *The Forray Team at The Corcoran Group*

CHRIS CAVORTI | EVAN F. CHURCH | MARVIN CHU | DONALD LAI

CHRIS CAVORTI

Lic. Associate RE Broker

(m) 914.804.7091

ccavorti@corcoran.com

DONALD LAI

Lic. Associate RE Broker

(m) 917.947.9917

dlai@corcoran.com

TRACY MCLEAN

Lic. Associate RE Broker

(m) 917.693.8135

tmm@corcoran.com



Follow @theforraygroup on social media for all things real estate related...

# More Photos – Virtual Staged



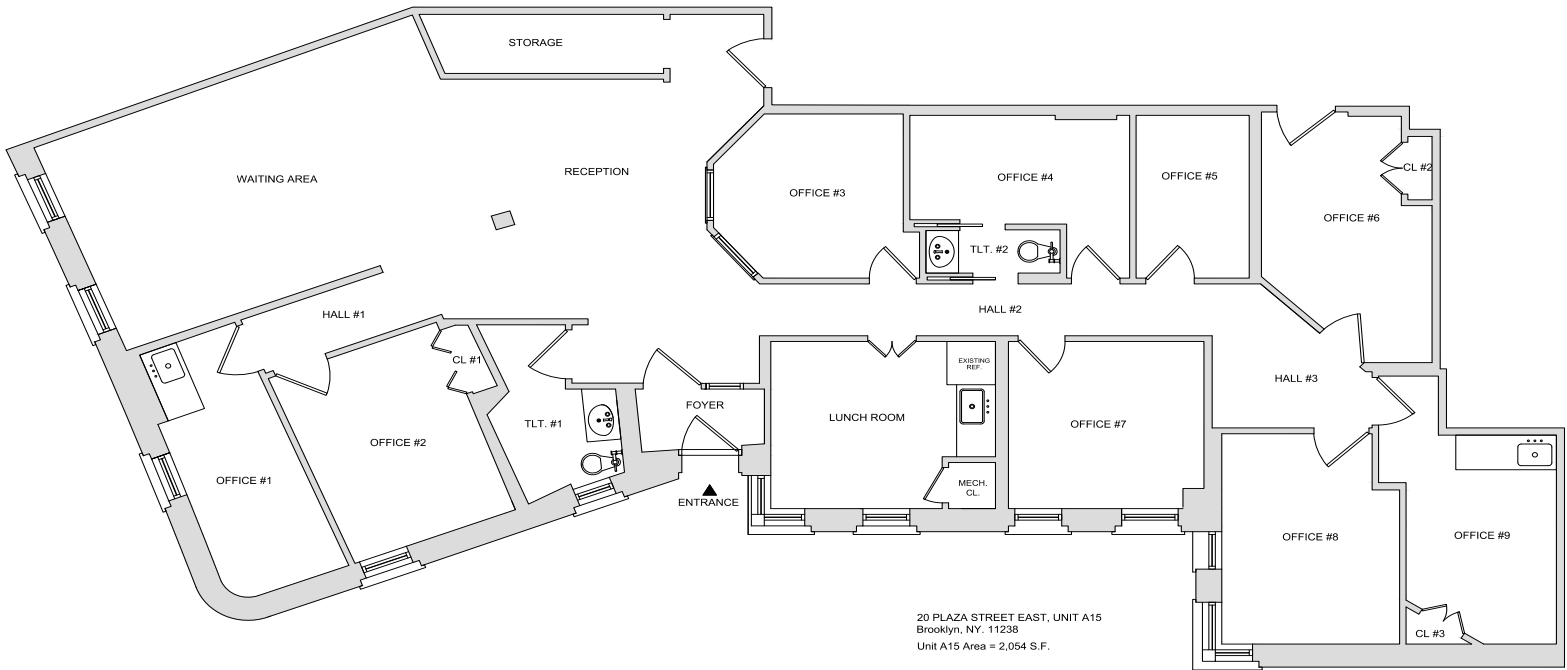


# More Photos



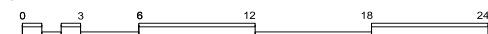


# Building Exterior & Floorplan



20 PLAZA STREET EAST, UNIT A15  
Brooklyn, NY 11238  
Unit A15 Area = 2,054 S.F.

EXISTING CONDITIONS



**Zirinsky Architecture, P.C.**

www.zirinskyarch.com

steve@zirinskyarch.com

44-02 11th Street, Long Island City, NY 11101 t: (718) 706-0616 f: (718) 706-0619

EXISTING FLOOR PLAN

DOB sign

label

seal & signature

date

04/05/23

AS NOTED EGM

scale

project

EXISTING CONDITIONS

20 PLAZA STREET EAST, UNIT A15

BROOKLYN, NY 11238

drawn by

2334

job no.

drawing

A-001.00

1 OF 1