



# SPACE AVAILABLE

5240 Snapfinger Park Dr

LITHONIA, GA 30035

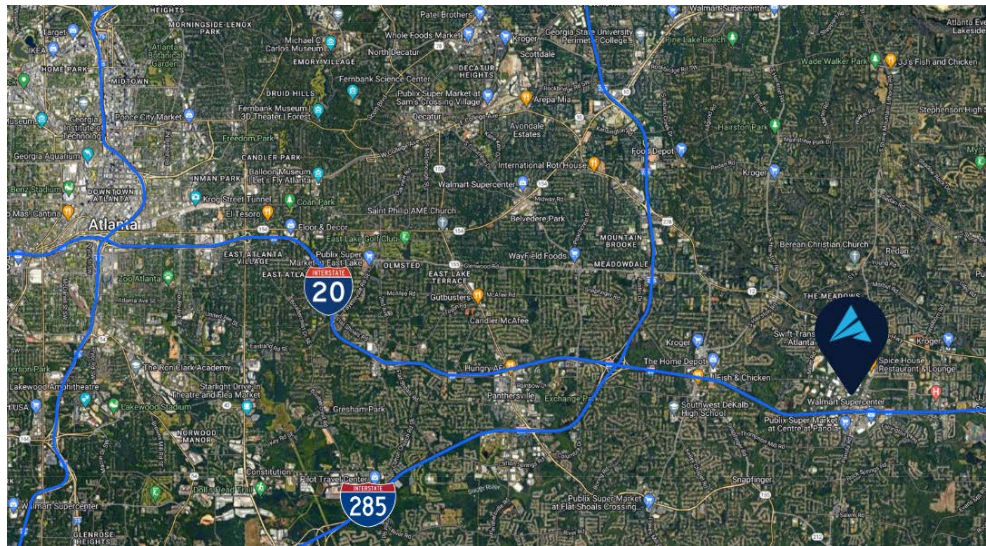


## FOR LEASE



### PROPERTY HIGHLIGHTS

- Move-In Suites Available
- 18' Minimum Clear Height
- 2,580-9,969 SF Available
- Business Park Setting
- Institutional Ownership
- Sprinklered
- Monument Signage
- Direct Access to I-20 + 285
- Dock High + Drive-In Loading



**APEX INDUSTRIAL**  
REAL ESTATE ADVISORS

3500 Lenox Rd NE, Suite 1275 | Atlanta, GA 30326 | [apexindustrialre.com](http://apexindustrialre.com)

For more information,  
please contact:

**TREY WEGHORST**  
Office: (770) 264-9420  
Cell: (404) 276-9314  
[tweghorst@apexindustrialre.com](mailto:tweghorst@apexindustrialre.com)

**BRYCE MCCAIN**  
Office: (404) 595-1552  
Cell: (770) 845-3559  
[bmccain@apexindustrialre.com](mailto:bmccain@apexindustrialre.com)

Although the information contained therein was provided from sources believed to be reliable, Apex Industrial makes no representation, expressed or implied, as to its accuracy and said information is subject to errors, omissions or changes.

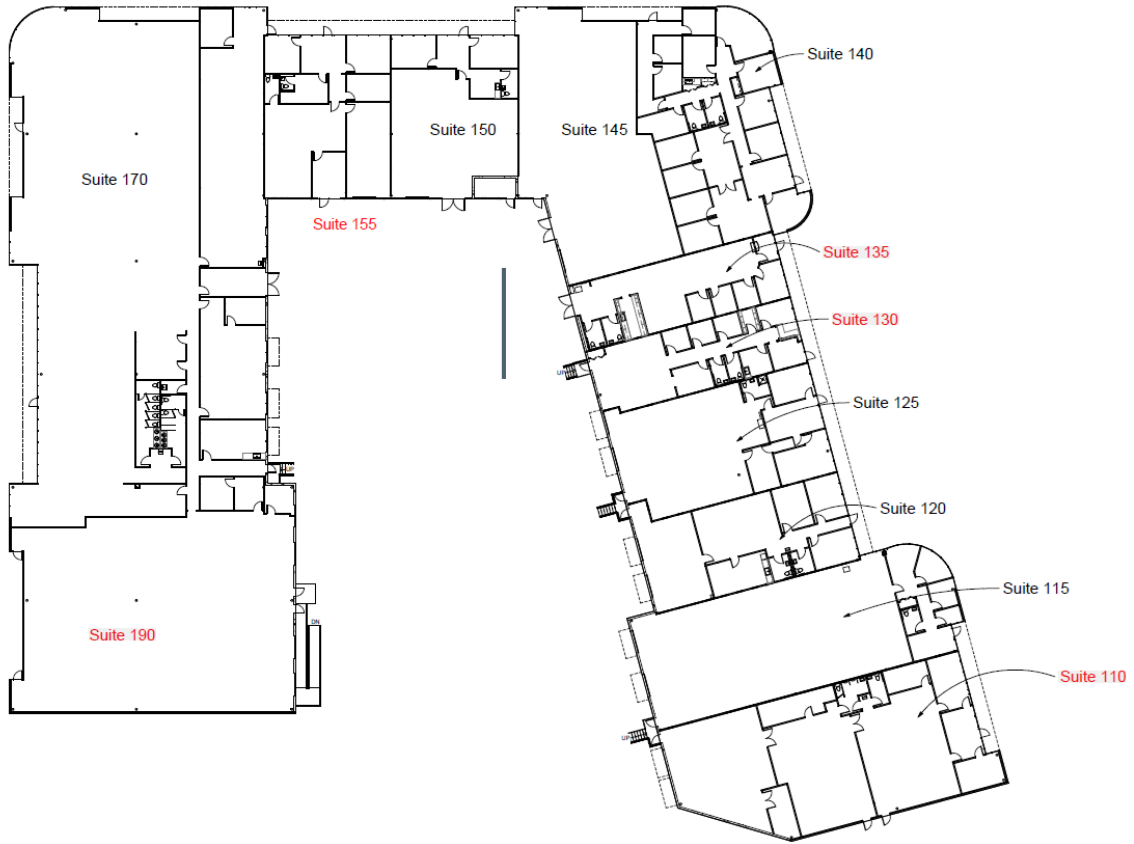


# SPACE AVAILABLE

5240 Snapfinger Park Dr

LITHONIA, GA 30035

## FLOORPLAN



**5240 SNAPPINGER TECH**  
(1/16" = 1'-0")



**APEX INDUSTRIAL**  
REAL ESTATE ADVISORS

3500 Lenox Rd NE, Suite 1275 | Atlanta, GA 30326 | [apexindustrialre.com](http://apexindustrialre.com)

For more information,  
please contact:

**TREY WEGHORST**

Office: (770) 264-9420  
Cell: (404) 276-9314  
[tweghorst@apexindustrialre.com](mailto:tweghorst@apexindustrialre.com)

**BRYCE MCCAIN**

Office: (404) 595-1552  
Cell: (770) 845-3559  
[bmccain@apexindustrialre.com](mailto:bmccain@apexindustrialre.com)

Although the information contained therein was provided from sources believed to be reliable, Apex Industrial makes no representation, expressed or implied, as to its accuracy and said information is subject to errors, omissions or changes.