

Brand New Industrial Property

Industrial
Property
For Sale

6730 28th Street Cir E, Sarasota, FL 34243



Property Description

Brand new 7,200 SF Industrial building in Manatee County. The building is divided into (2) 3,600 SF units. Each featuring a storefront entry leading into a reception area, office and private restrooms. The warehouse areas includes a large overhead door for convenient deliveries and shipping operations and 3 Phase Electric. With an 18-foot eave height, vaulting to 22 feet at the peak, the space offers ample vertical clearance for storage, equipment, or racking systems.

Prime Location: Situated just off Highway 301 and Whitfield Avenue, this property provides easy access to both Sarasota and Manatee counties, making it an ideal choice for businesses looking to maximize their regional reach.

Property Highlights

OFFERING SUMMARY

| | |
|------------------|--------------------------|
| Sale Price: | \$2,100,000 |
| Number of Units: | 2 |
| Lot Size: | 26,977 SF |
| Building Size: | 7,200 SF |
| Zoning: | HM - Heavy Manufacturing |
| Parking Spaces: | 10 |

| DEMOGRAPHICS | 1 MILE | 3 MILES | 5 MILES |
|-------------------|----------|----------|----------|
| Total Households | 868 | 29,747 | 86,827 |
| Total Population | 2,040 | 69,514 | 204,525 |
| Average HH Income | \$87,800 | \$85,255 | \$80,121 |



Loyd Robbins

Principal Broker
(941)-356-9659
loyd@rerobbins.com



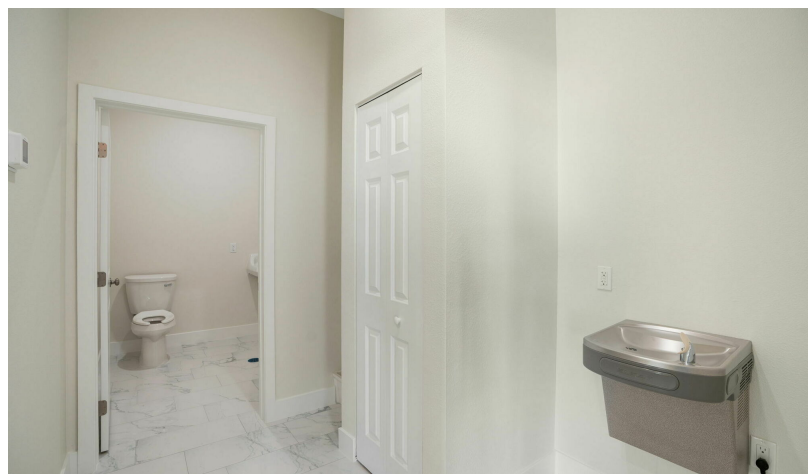
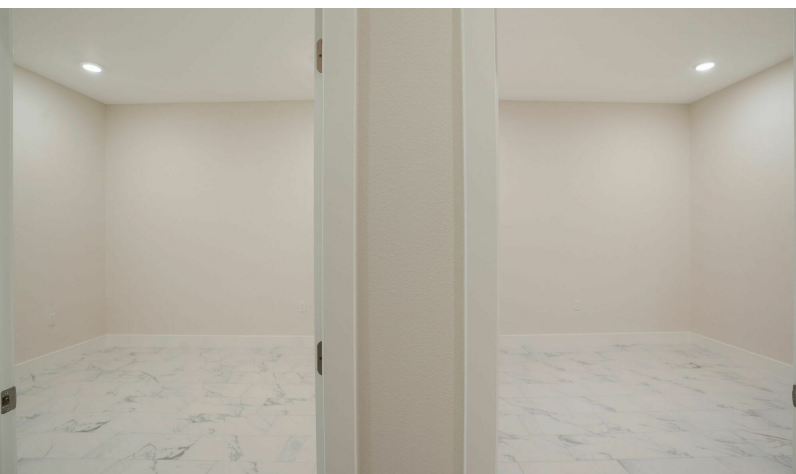
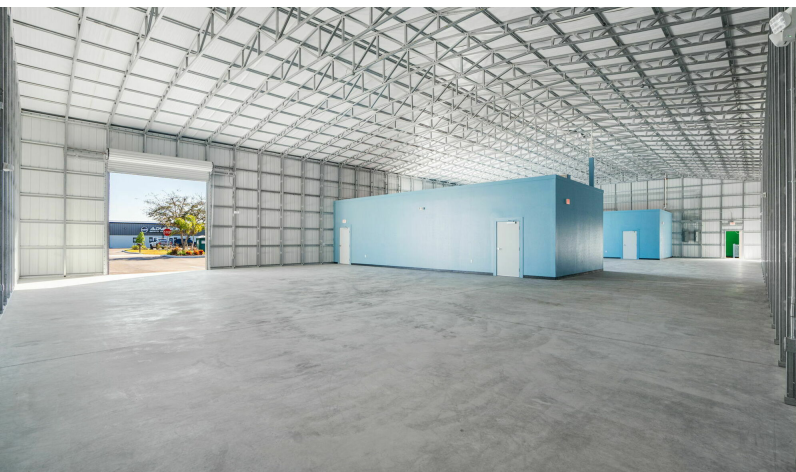
3580 S. Tuttle Ave
Sarasota FL 34239

www.rerobbins.com

Owner User or Investor Opportunity

6730 28th Street Cir E, Sarasota, FL 34243

Industrial
Property
For Sale



Loyd Robbins

Principal Broker
(941)-356-9659
loyd@rerobbins.com

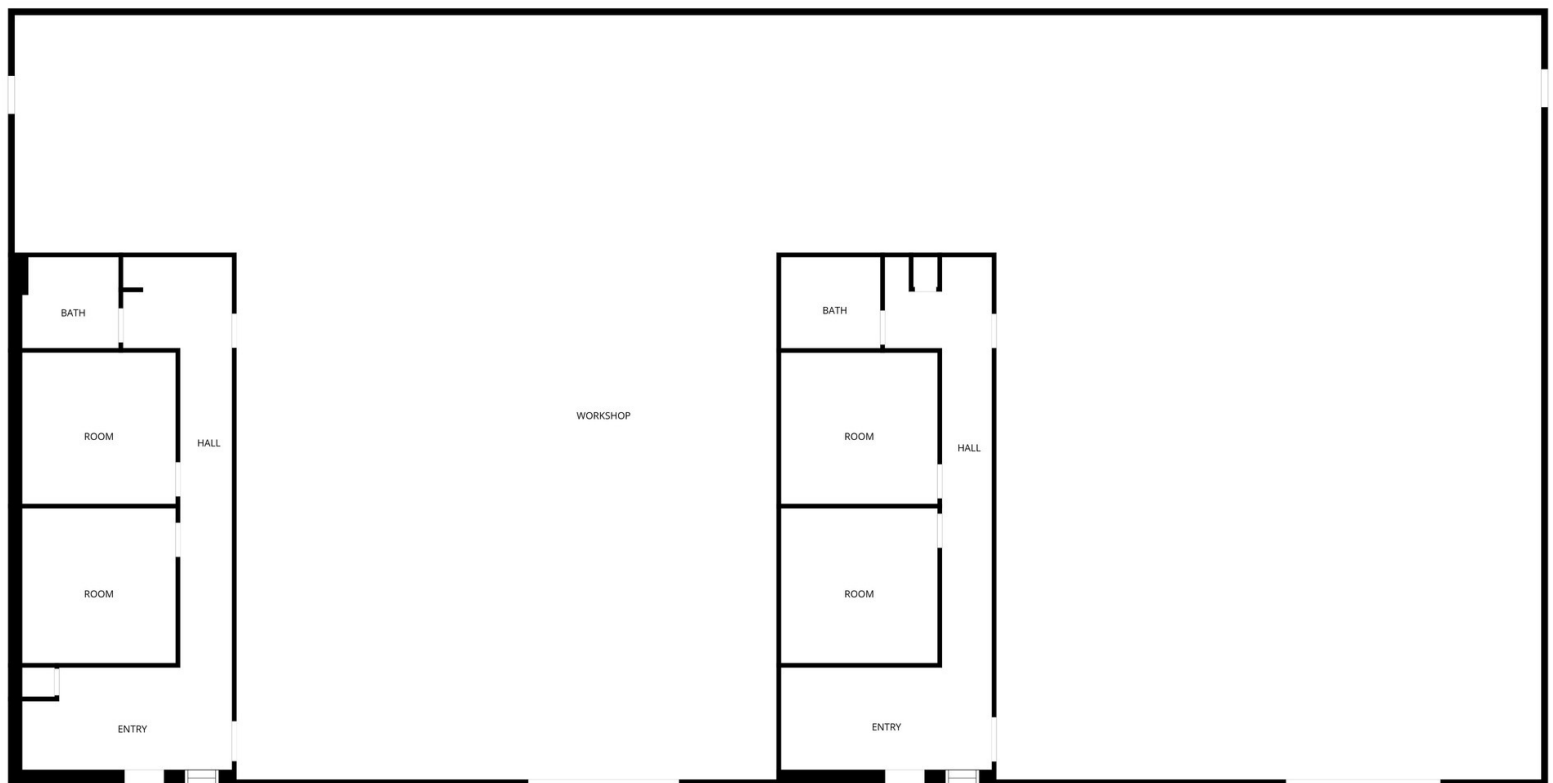


3580 S. Tuttle Ave
Sarasota FL 34239
www.rerobbins.com

Floor Plan

Industrial
Property
For Sale

6730 28th Street Cir E, Sarasota, FL 34243



FLOOR PLAN CREATED BY CUBICASA APP. MEASUREMENTS DEEMED HIGHLY RELIABLE BUT NOT GUARANTEED.



Loyd Robbins

Principal Broker
(941)-356-9659
loyd@rerobbins.com

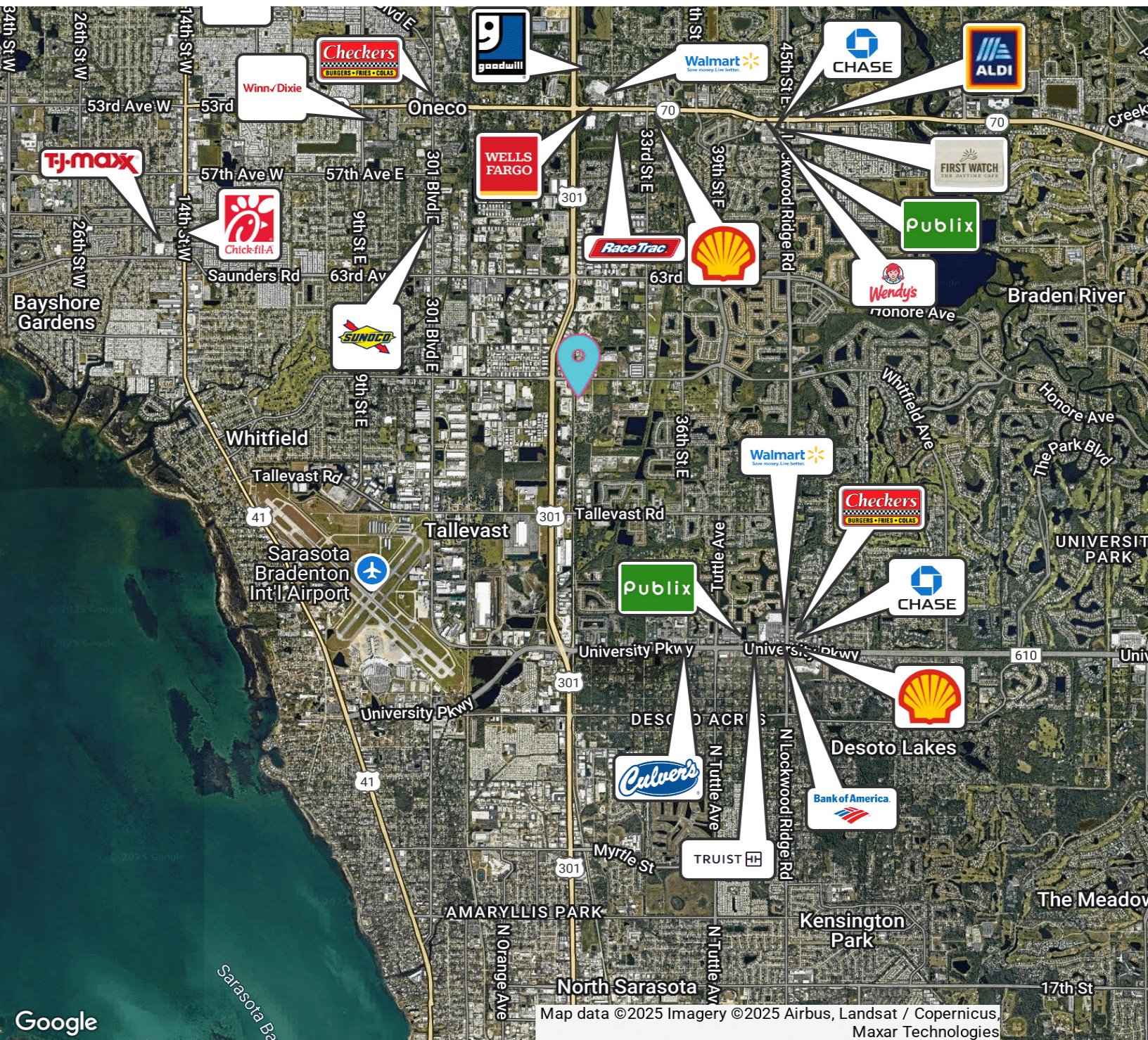


3580 S. Tuttle Ave
Sarasota FL 34239
www.rerobbins.com

Conveniently Located

Industrial
Property
For Sale

6730 28th Street Cir E, Sarasota, FL 34243



Loyd Robbins

Principal Broker
(941)-356-9659
loyd@rerobbins.com

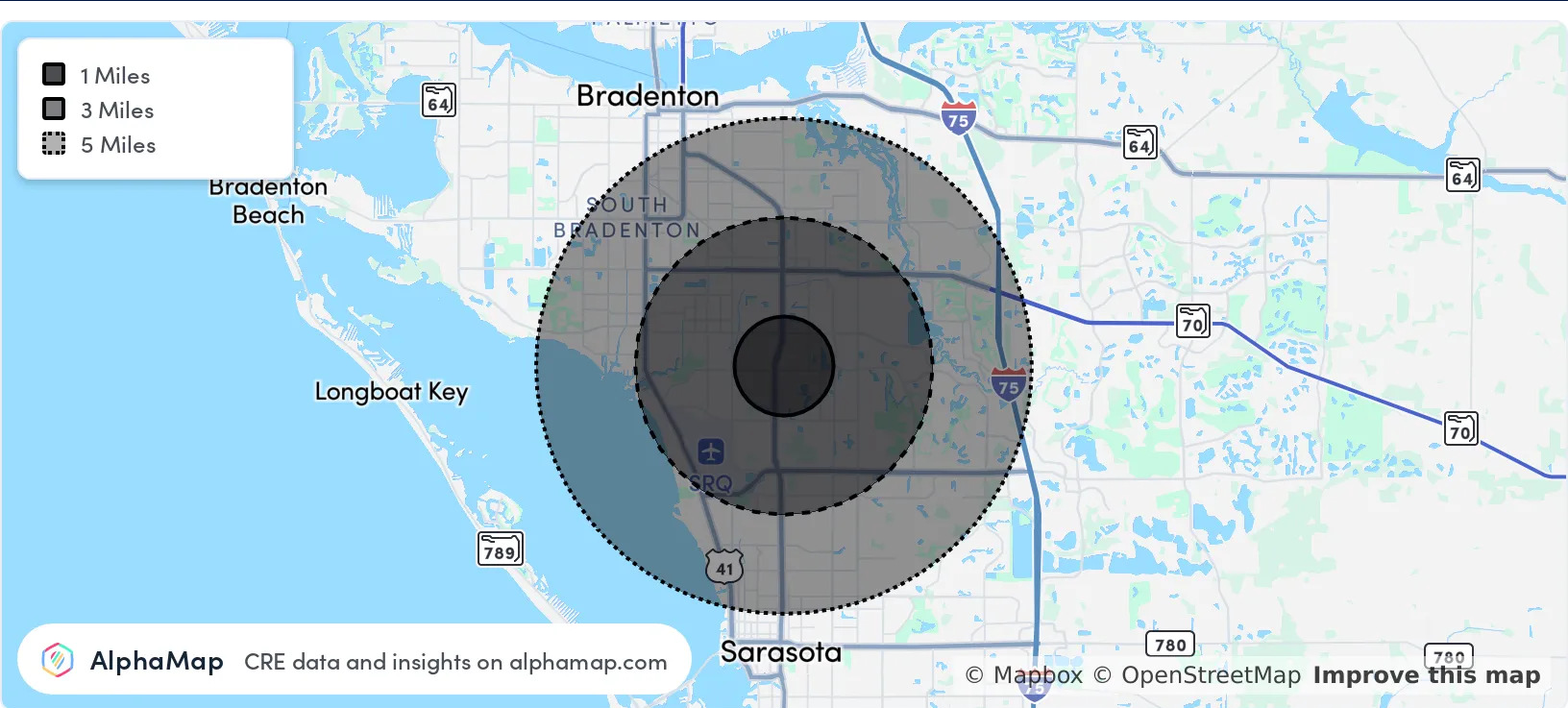


3580 S. Tuttle Ave
Sarasota FL 34239
www.rerobbins.com

Rapidly Growing Area

Industrial
Property
For Sale

6730 28th Street Cir E, Sarasota, FL 34243



| POPULATION | 1 MILE | 3 MILES | 5 MILES |
|----------------------|--------|---------|---------|
| Total Population | 2,040 | 69,514 | 204,525 |
| Average Age | 49 | 47 | 46 |
| Average Age (Male) | 48 | 47 | 45 |
| Average Age (Female) | 49 | 48 | 47 |

| HOUSEHOLD & INCOME | 1 MILE | 3 MILES | 5 MILES |
|---------------------|-----------|-----------|-----------|
| Total Households | 868 | 29,747 | 86,827 |
| Persons per HH | 2.4 | 2.3 | 2.4 |
| Average HH Income | \$87,800 | \$85,255 | \$80,121 |
| Average House Value | \$371,133 | \$314,758 | \$307,860 |
| Per Capita Income | \$36,583 | \$37,067 | \$33,383 |

Map and demographics data derived from AlphaMap



Loyd Robbins

Principal Broker
(941)-356-9659
loyd@rerobbins.com



3580 S. Tuttle Ave
Sarasota FL 34239

www.rerobbins.com