

FOR SALE

±1.0 ACRE OF LAND AVAILABLE

\$500,000

821 Newark Road | Toughkenamon, PA 19374 | Chester County

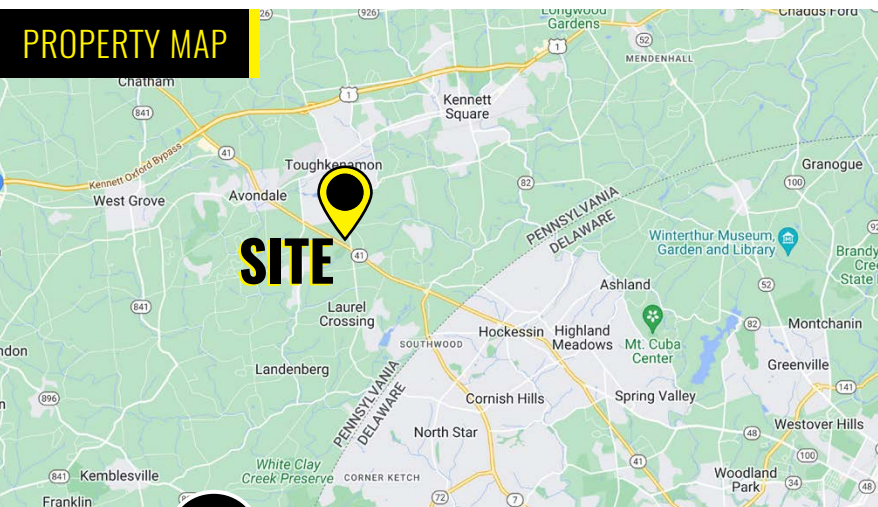
PROPERTY FEATURES / HIGHLIGHTS

- ±1.00 Acre of Land Available For Sale in Toughkenamon
- Drive thru possible
- Join Tractor Supply Co. & surrounding national retailers
- Strong Traffic Counts:
27,000 VPD at the intersection of Route 41 & Newark Road
- Great Visibility and Signage Opportunity on Newark Road

DEMOGRAPHICS

	1 MILE	3 MILE	5 MILE
POPULATION	1,502	25,512	64,276
TOTAL HOUSEHOLDS	469	8,279	22,177
AVERAGE HHI	\$192,640	\$224,615	\$206,577
TOTAL EMPLOYEES	451	6,808	20,866

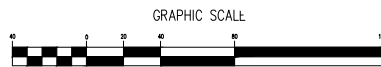
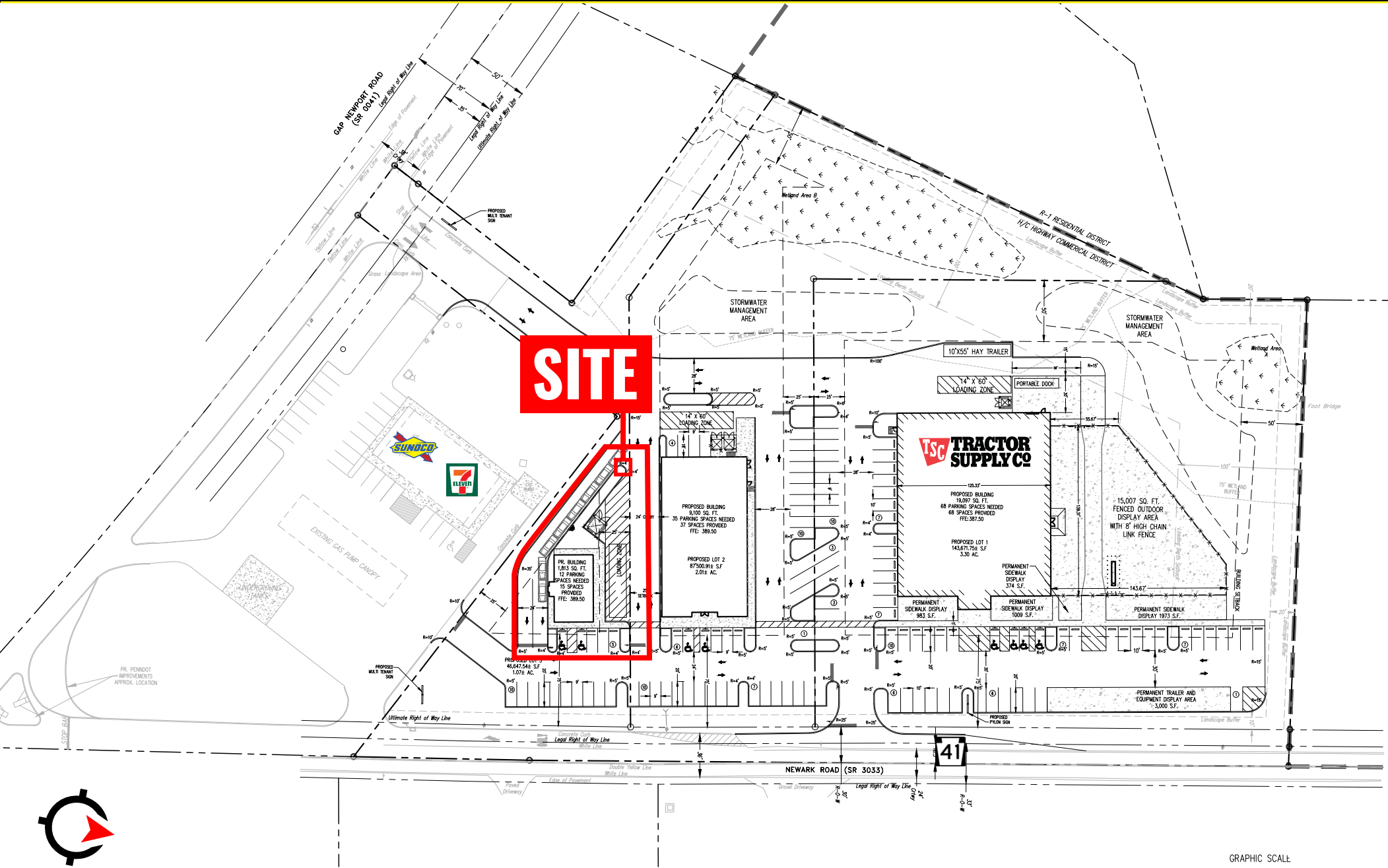
PROPERTY MAP



JOIN SURROUNDING RETAILERS:







ABOUT ZOMMICK MCMAHON COMMERCIAL REAL ESTATE

Zommick McMahon Commercial Real Estate, Inc. has been a Metro Philadelphia Area staple since its inception in 1949. The Company was founded by Joseph Zommick, and continues today with Ryan McMahon and his highly experienced staff. We are much more than just a real estate brokerage firm – we are a team of experienced, consummate professionals who are dedicated to superb customer service. Partner with us for support from some of the top commercial brokers in Pennsylvania, New Jersey and Delaware.

SOME OF OUR SATISFIED CLIENTS



IRON HILL
BREWERY & RESTAURANT

