

FOR SALE
SOUTH OF SEC APACHE TRL & MERIDIAN RD
APACHE JUNCTION, ARIZONA



FEATURES

- ±3.3 Acres
- Fully Fenced
- Utilities along Meridian Road
- Parcel #: 101-06-016 (Pinal County)
- Zoning: CI-1PD (Contractor Yard, Vehicle Yard, Light Manufacturing)
- Functional and Rectangular Parcel Shape
- Immediate Access to Apache Trail via Meridian Road
- 2 Miles to US-60 Highway
- Sale Price: \$1,620,000 (\$11.30/SF)

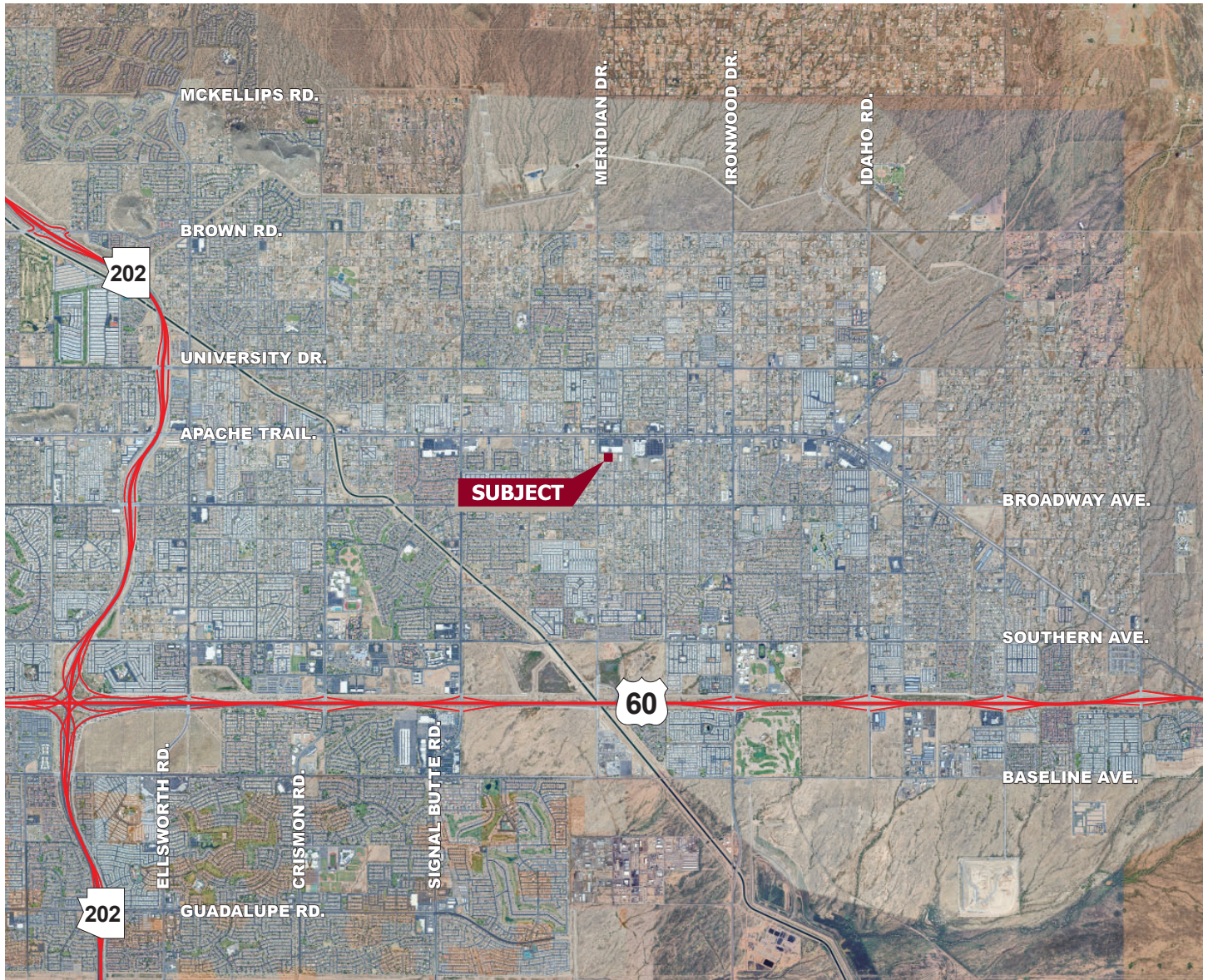
Matt Hobaica
mhobaica@leearizona.com
D 602.954.3755

Ryan Hingst
rhingst@leearizona.com
D 602.954.3772



All information furnished regarding property for sale, rental or financing is from sources deemed reliable, but no warranty or representation is made to the accuracy thereof and same is submitted to errors, omissions, change of price, rental or other conditions prior to sale, lease or financing or withdrawal without notice. No liability of any kind is to be imposed on the broker herein.

FOR SALE
SOUTH OF SEC APACHE TRAIL & MERIDIAN RD
APACHE JUNCTION, ARIZONA



Matt Hobaica
mhobaica@leearizona.com
D 602.954.3755

Ryan Hingst
rhingst@leearizona.com
D 602.954.3772

All information furnished regarding property for sale, rental or financing is from sources deemed reliable, but no warranty or representation is made to the accuracy thereof and same is submitted to errors, omissions, change of price, rental or other conditions prior to sale, lease or financing or withdrawal without notice. No liability of any kind is to be imposed on the broker herein.