



HIGHLY-VISIBLE CLASS A OFFICE SPACE

Castalia at Meadowmont

301 W Barbee Chapel Road, Chapel Hill, NC 27517

**AVISON
YOUNG**

Property highlights

Opportunity

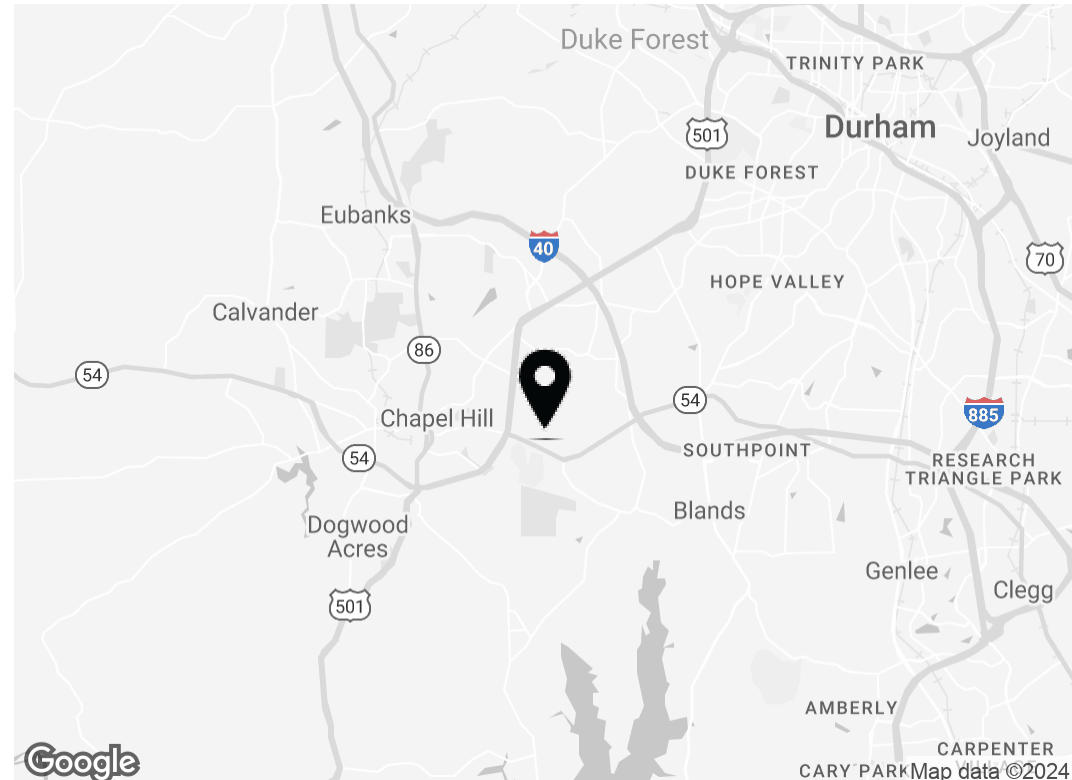
Third floor office suites available at Castalia at Meadowmont, a well-appointed office building located in Chapel Hill, NC. Meadowmont Village is located just off Raleigh Road and Highway 54, less than one mile from Highway 15/501 and two miles to UNC at Chapel Hill.

Offering Summary

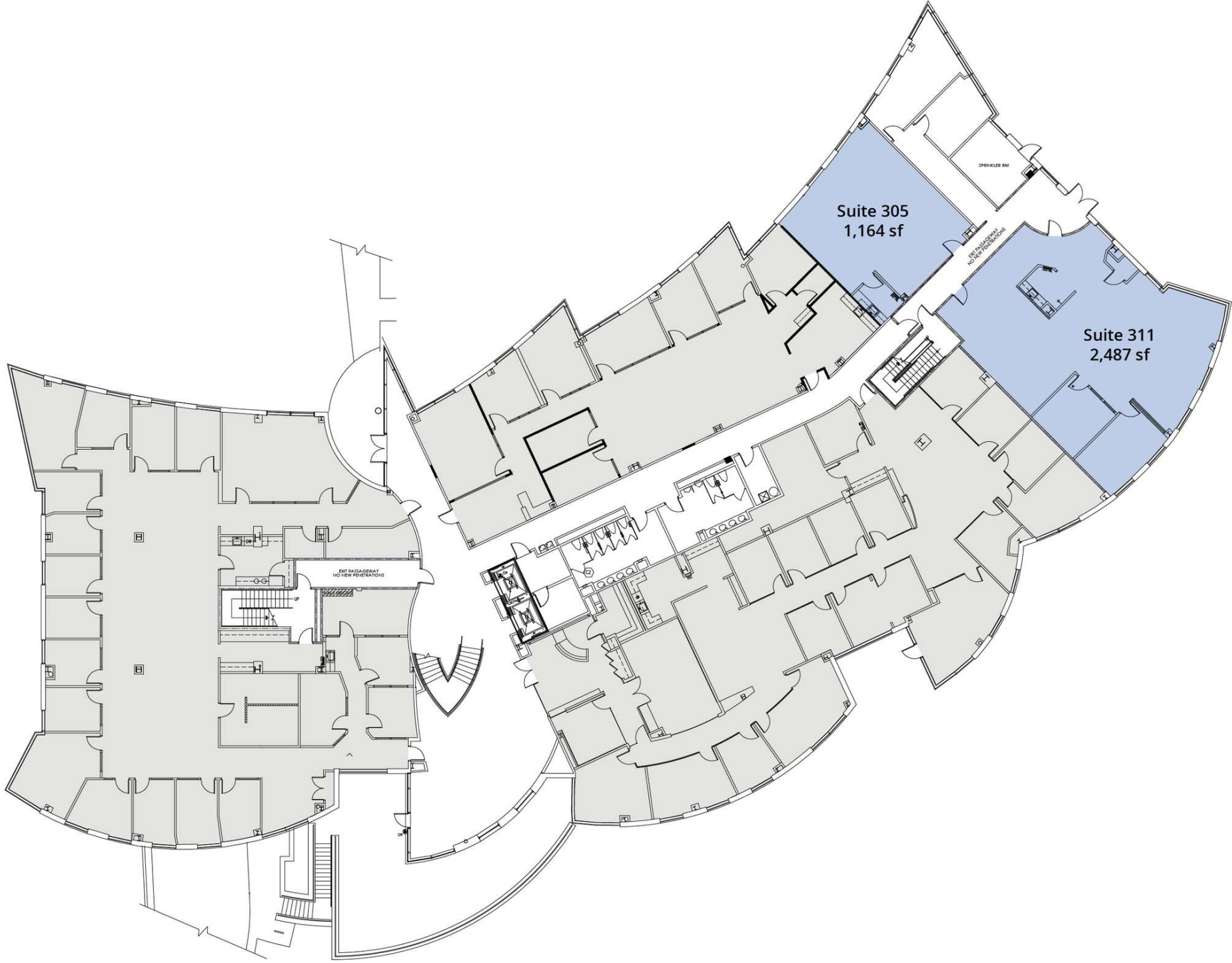
Lease Rate:	\$34.00 SF/yr (Full Service)
Building Size:	40,000 SF
Available SF:	1,164 - 2,487 SF
Parking Ratio:	3 per 1,000 SF

Highlights

- Attractive interior finishes
- Dramatic floor to ceiling windows
- Outdoor patio
- Ample parking
- Walking distance to nearby retail and shopping

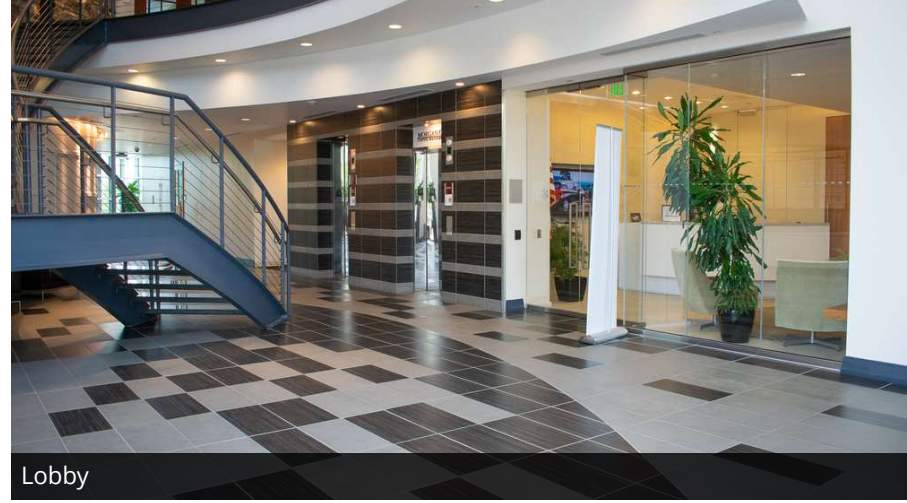


Third Floor Plan





Exterior



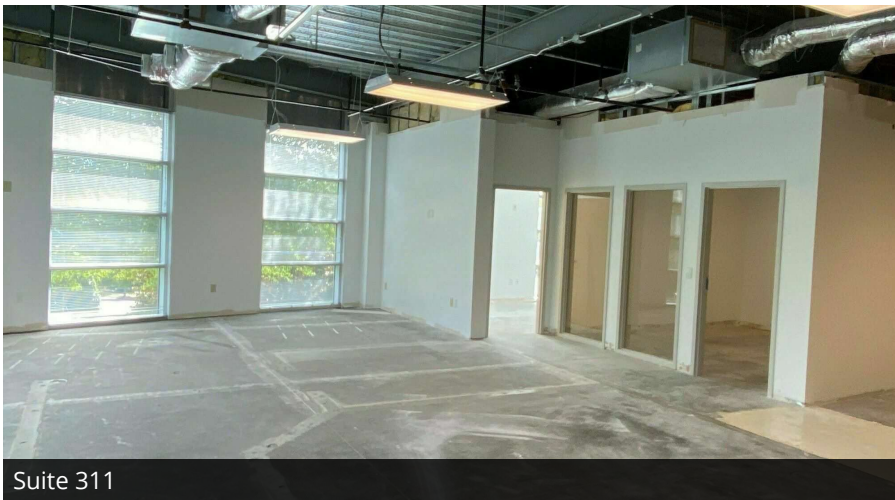
Lobby



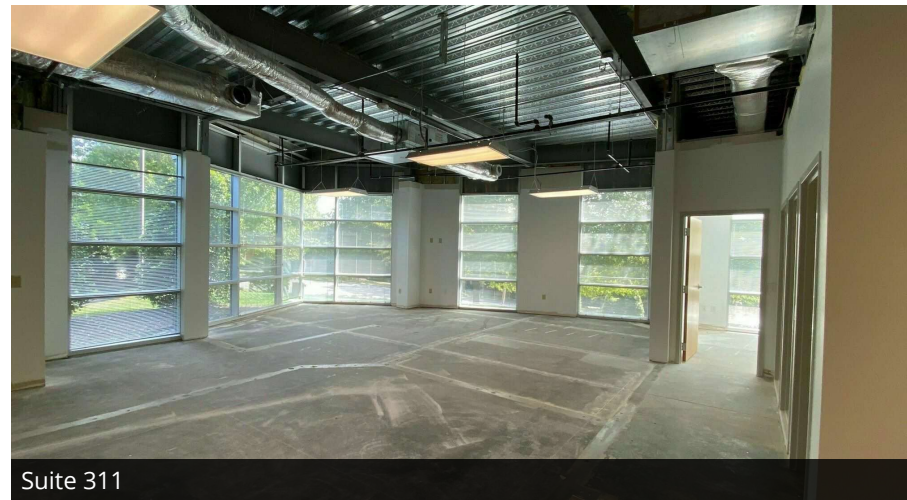
Suite 305



Suite 305



Suite 311



Suite 311



Let's talk.

Arnold Siegmund

Principal, Landlord Representation

D 919 420 1573

arnold.siegmund@avisonyoung.com

Avison Young - Raleigh-Durham | 919 785 3434
5440 Wade Park Boulevard, Suite 200 | Raleigh, NC 27607

© 2024. Avison Young - Raleigh-Durham. Information contained herein was obtained from sources deemed reliable and, while thought to be correct, have not been verified. Avison Young - Raleigh-Durham does not guarantee the accuracy or completeness of the information presented, nor assumes any responsibility or liability for any errors or omissions therein.

**AVISON
YOUNG**