

# 2 CHARLES STREET PROVIDENCE, RI

2 SUITES AVAILABLE / FOR LEASE





# 2 CHARLES STREET PROVIDENCE, RI

2 SUITES AVAILABLE / FOR LEASE

**LOCATION** The Fletcher Building, in Providence, is a 24,600 SF historic 3-story collection of commercial office spaces situated between Charles Street and the Moshassuck River. The property, renovated and ready to go, is easily accessible by rail, bus and pedestrians and offers ample parking on site.

## AVAILABLE SPACE

305 SF Suite ADA Compliant (2<sup>nd</sup> Floor)

815 SF Suite (3<sup>rd</sup> Floor)

## LEASE TERM

Negotiable

## FEATURES

Class B Office Building

Built 1860, fully renovated

Exceptional visibility, access and parking

## ASKING RENT

Upon Request



Holden Wilson / [hwilson@hayessherry.com](mailto:hwilson@hayessherry.com) / +1 401 273 1981

©2025 Cushman & Wakefield. All rights reserved. The information contained in this communication is strictly confidential. This information has been obtained from sources believed to be reliable but has not been verified. NO WARRANTY OR REPRESENTATION, EXPRESS OR IMPLIED, IS MADE AS TO THE CONDITION OF THE PROPERTY (OR PROPERTIES) REFERENCED HEREIN OR AS TO THE ACCURACY OR COMPLETENESS OF THE INFORMATION CONTAINED HEREIN, AND SAME IS SUBMITTED SUBJECT TO ERRORS, OMISSIONS, CHANGE OF PRICE, RENTAL OR OTHER CONDITIONS, WITHDRAWAL WITHOUT NOTICE, AND TO ANY SPECIAL LISTING CONDITIONS IMPOSED BY THE PROPERTY OWNER(S). ANY PROJECTIONS, OPINIONS OR ESTIMATES ARE SUBJECT TO UNCERTAINTY AND DO NOT SIGNIFY CURRENT OR FUTURE PROPERTY PERFORMANCE.



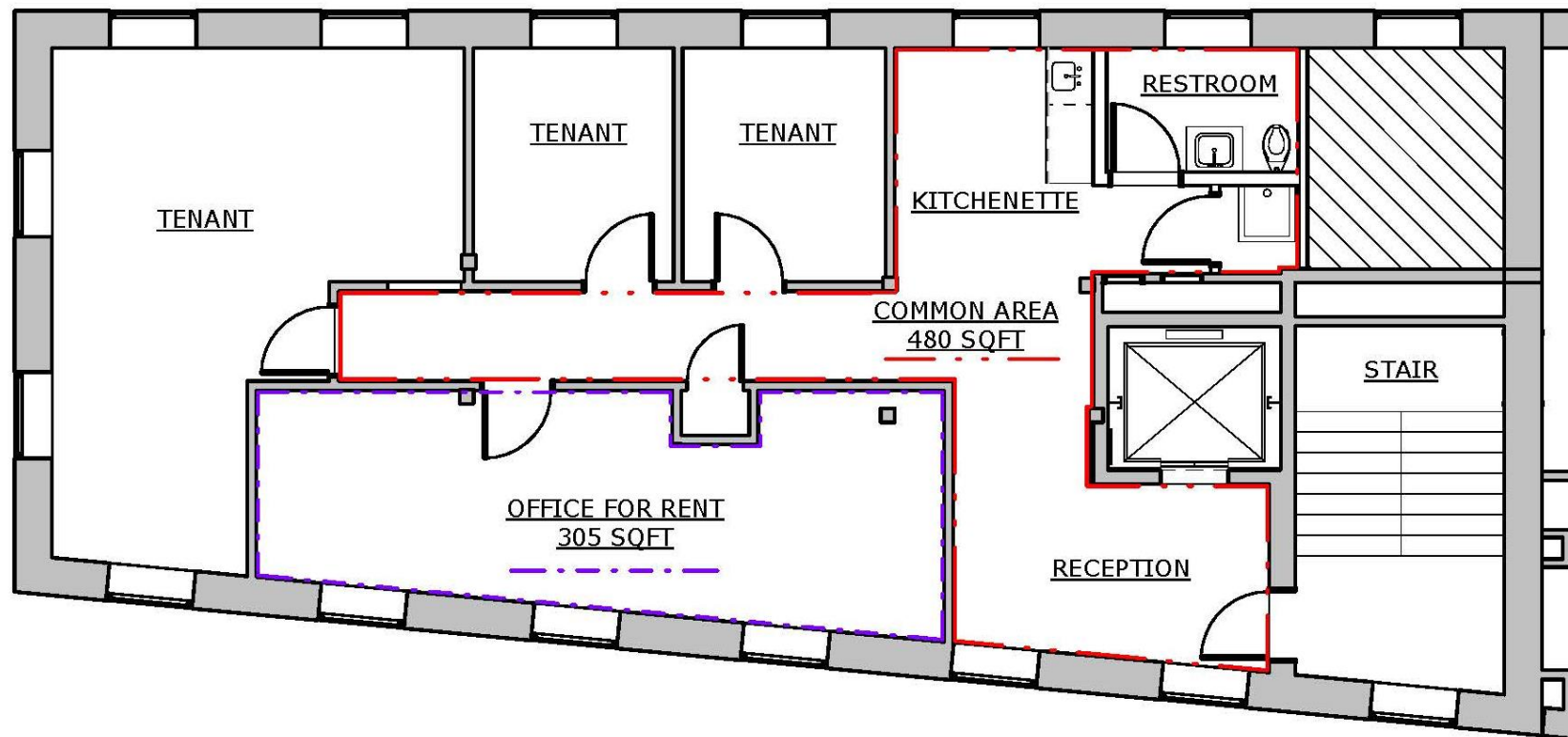
HAYES & SHERRY

[HAYESSHERRY.COM](http://HAYESSHERRY.COM)

# 2 CHARLES STREET PROVIDENCE, RI

## FLOOR PLAN – BUILDING A

## 2<sup>nd</sup> FLOOR SUITE

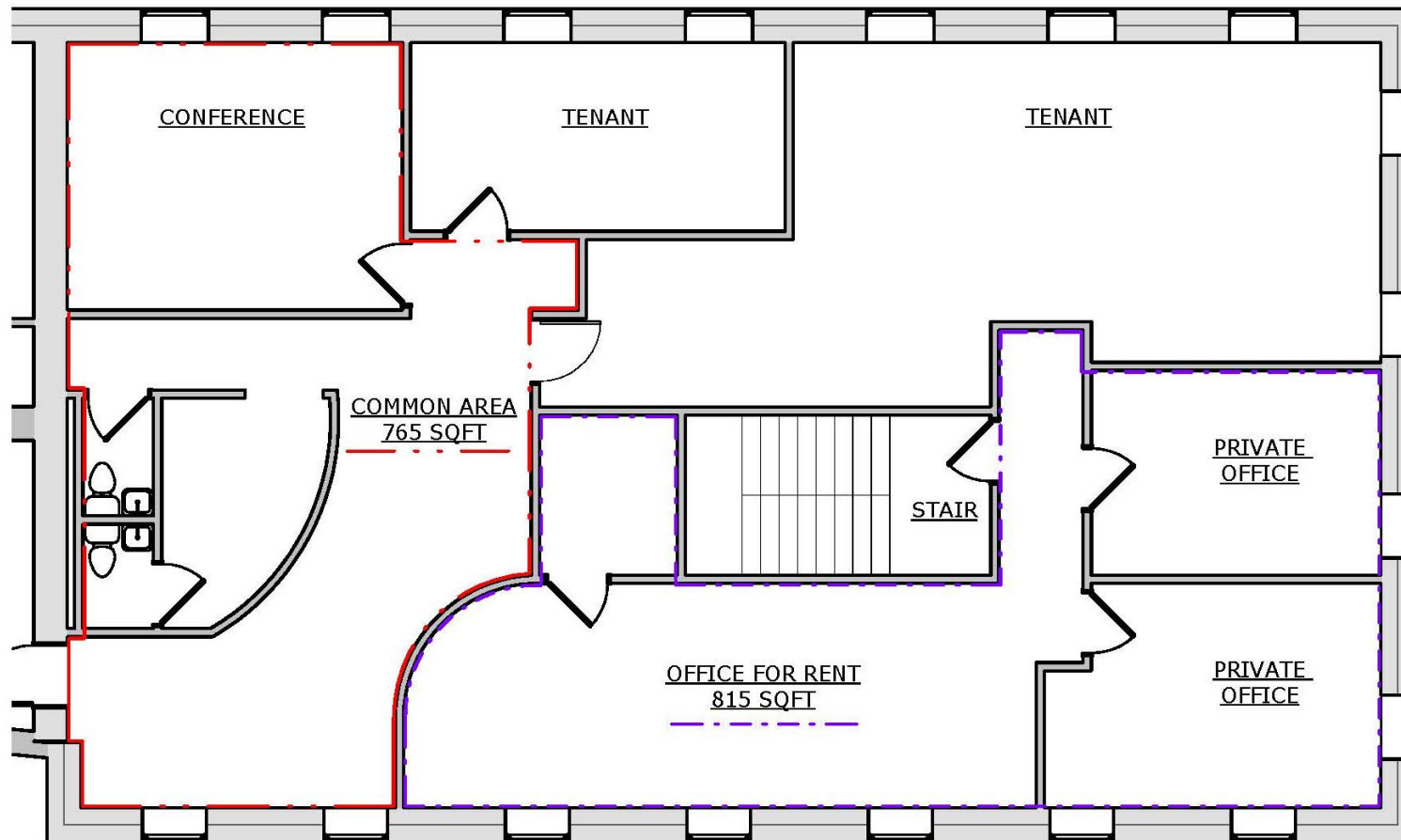


① BUILDING A - SECOND FLOOR SUITE  
1/8" = 1'-0"

# 2 CHARLES STREET PROVIDENCE, RI

## FLOOR PLAN – BUILDING C

## 3<sup>RD</sup> FLOOR SUITE



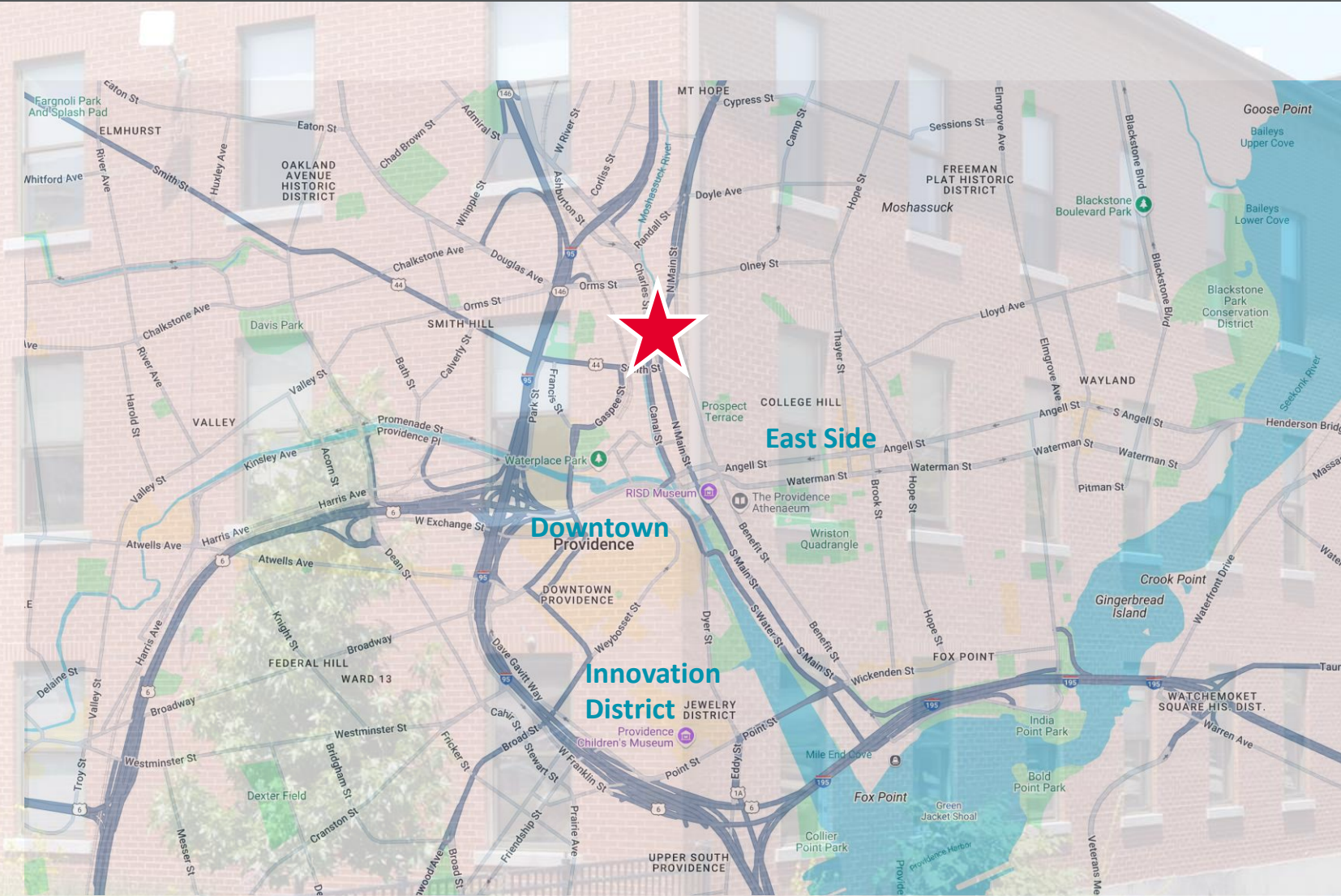
① BUILDING C - THIRD FLOOR SUITE  
1/8" = 1'-0"



# 2 CHARLES STREET PROVIDENCE, RI

AREA MAP

2 SUITES AVAILABLE / FOR LEASE







HAYES & SHERRY

For more information, please contact:

Holden Wilson / [hwilson@hayessherry.com](mailto:hwilson@hayessherry.com) / 401 273 1981

[HAYESSHERRY.COM](http://HAYESSHERRY.COM)