



SPECTRUM
REALTY SERVICES LLC

RETAIL/COMMERCIAL
FOR LEASE

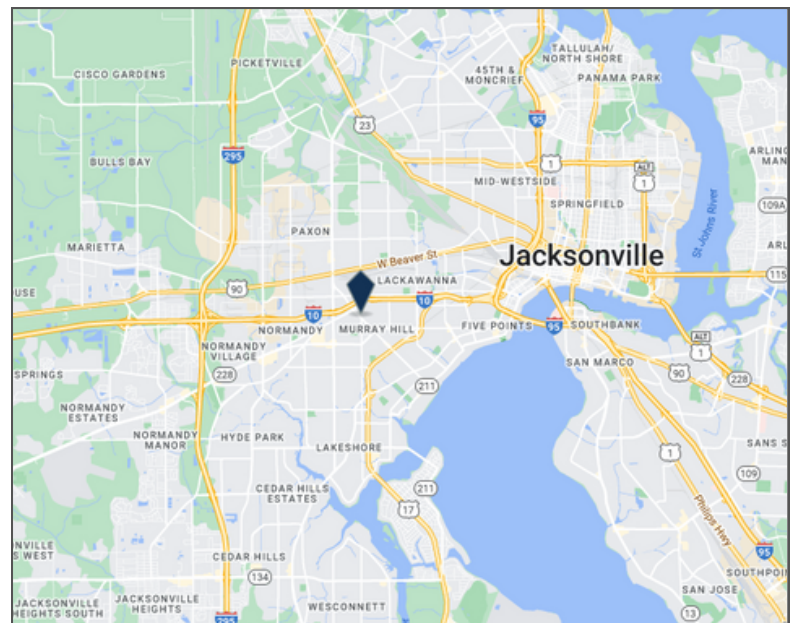


600 Edgewood Ave S, Jacksonville, FL 32205

LEASE TERM: 3 Year
\$12.00 SF - Modified Gross

Property Highlights

- ✓ 3,000 SF of Retail Space
- ✓ Located in growing Murray Hill (access to I-4 & I-95)
- ✓ FDOT Road Improvements, Center Lane Parking, & Pedestrian Crosswalks scheduled for completion Summer of 2024.
- ✓ Rear yard is potentially available.
- ✓ Zoning: CCG-1



Marc Hassan, MBA, LCAM, Realtor
CEO/BROKER

Visit us online at www.spectrumrealtyco.com

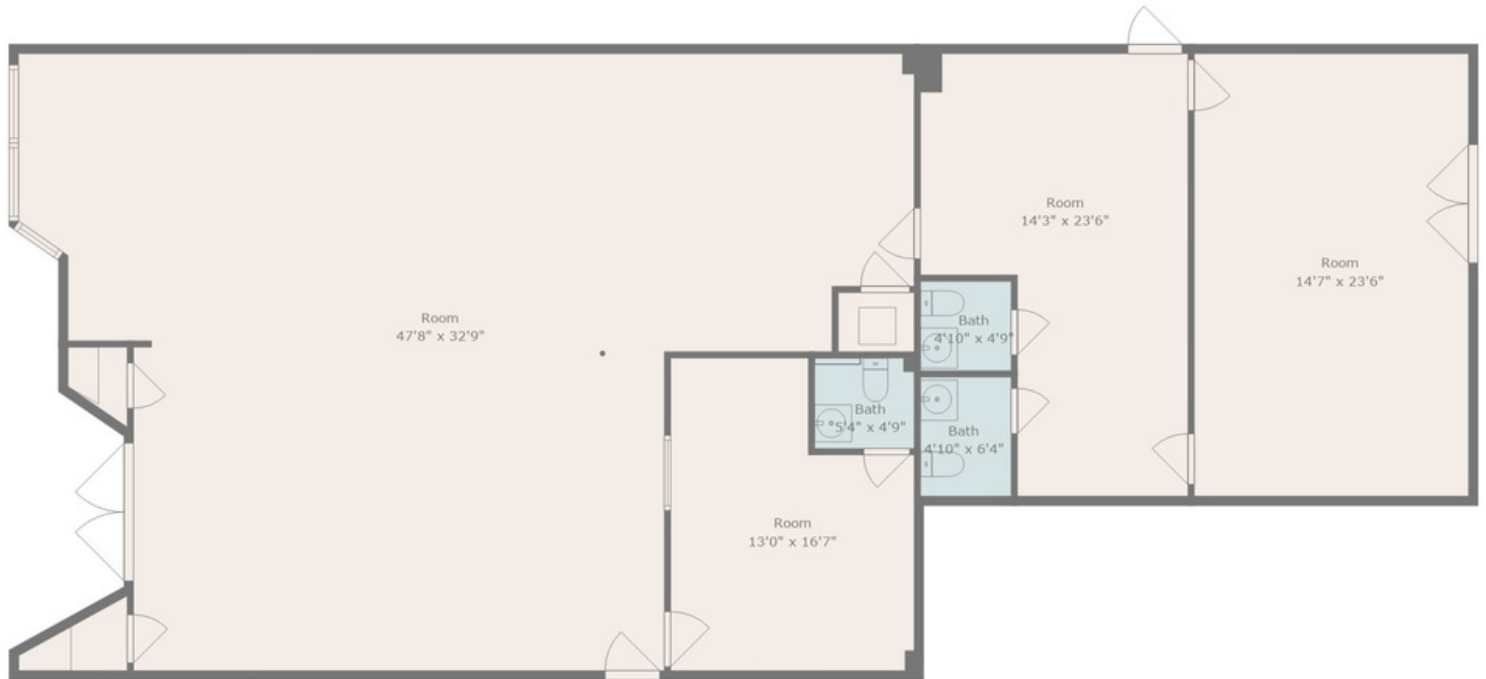
📞 904-389-7311

✉️ mhassan@spectrumrealtyco.com





FLOOR PLAN



Dimensions are approximate.

ADDITIONAL PROPERTY PHOTOS





SPECTRUM
REALTY SERVICES LLC

FOR LEASE
600 Edgewood Ave S

ADDITIONAL PROPERTY PHOTOS



Marc Hassan, MBA, LCAM, Realtor
CEO/BROKER

Visit us online at www.spectrumrealtyco.com

 904-389-7311


 mhassan@spectrumrealtyco.com





For more information about this property or additional real estate services, please contact:

Marc Hassan, MBA, LCAM, Realtor
CEO/BROKER

 904-389-7311

 mhassan@spectrumrealtyco.com

Visit us online at www.spectrumrealtyco.com



©2024 Spectrum Realty Services, LLC. All Rights Reserved. The information contained in this Offering Memorandum has been obtained from sources we believe to be reliable; however, Spectrum Realty Services, LLC has not verified, and will not verify, any of the information contained herein, nor has Spectrum Realty Services, LLC conducted any investigation regarding these matters and makes no warranty or representation whatsoever regarding the accuracy or completeness of the information provided. All potential buyers must take appropriate measures to verify all the information set forth herein.