



2440 FULTON STREET

THE LESER GROUP | BROOKLYN, NY

This development boasts 400,000 SF of commercial spaces in the up-and-coming area of Broadway Junction, Brooklyn.

The project is part of the NYC Mayor's Office CARES effort to strategically create anchor offices for city tenants in emerging markets, recognizing the importance of commercial growth outside traditional business districts.

The Human Resources Administration - HRA, leased 275,000 SF of the building for 21 years. 1,200 HRA employees will be relocated to the facility by Summer 2025, and an average of 1,800 daily customer visits is expected.

The remaining space offered for the private-market are approximately 100,000 RSF of Retail & Office Space with parking to accommodate 300 vehicles.

The site offers direct access to Multiple Bus & Subway lines and is in close proximity to the Jackie Robinson Parkway.

SUBWAY - A/C/J/L/Z

BUS - B12/B20/B25/B83/Q24/Q56

LIRR - Far Rockaway/Hempstead & West Hempstead Branches





PROGRAM
MIXED USE

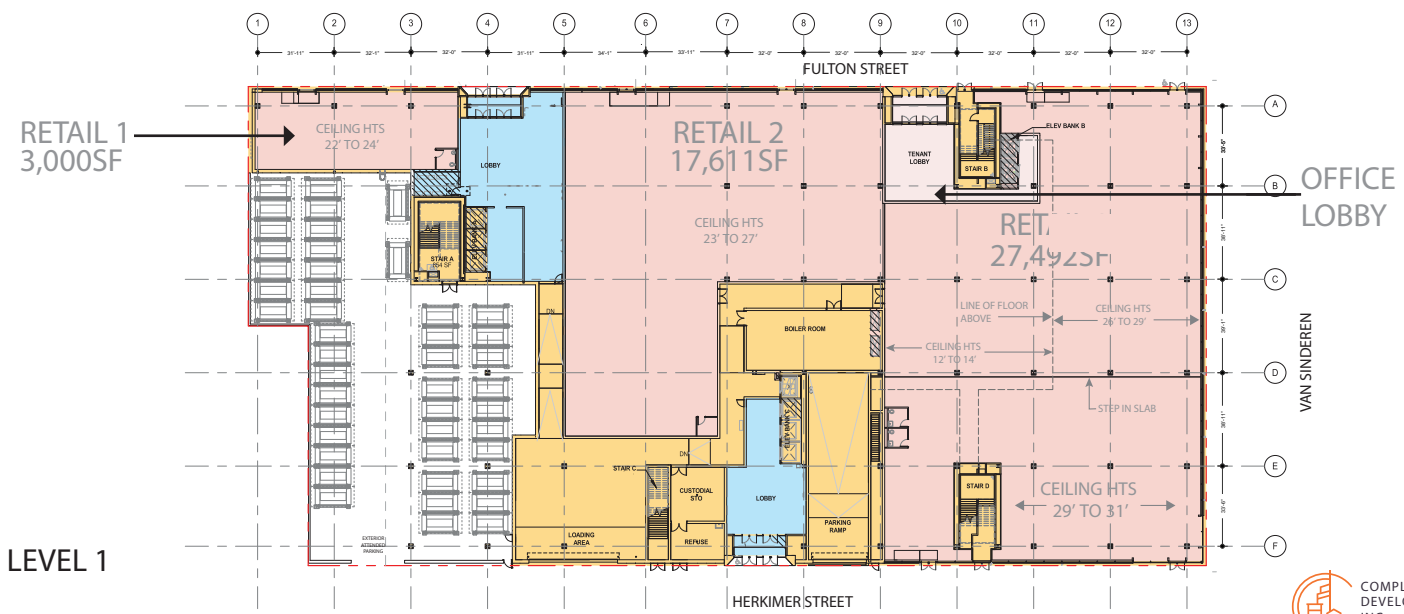
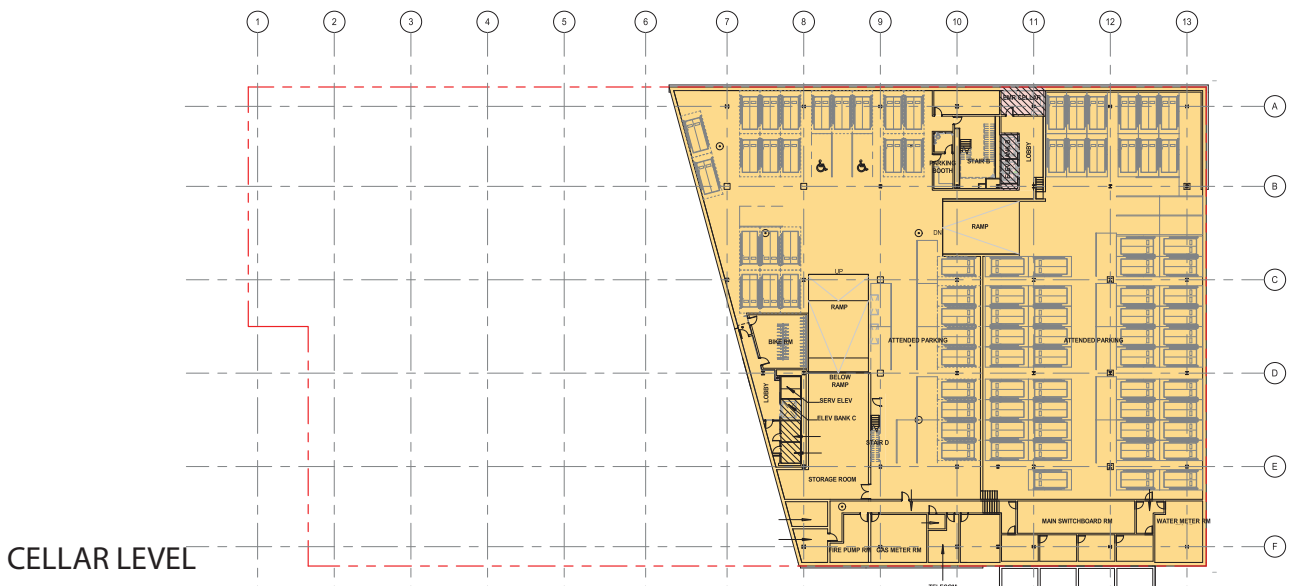
DEVELOPER
THE LESER GROUP

SIZE
400,000 SF

LOCATION
BROOKLYN, NEW YORK

STATUS
IN CONSTRUCTION







LEVEL 2

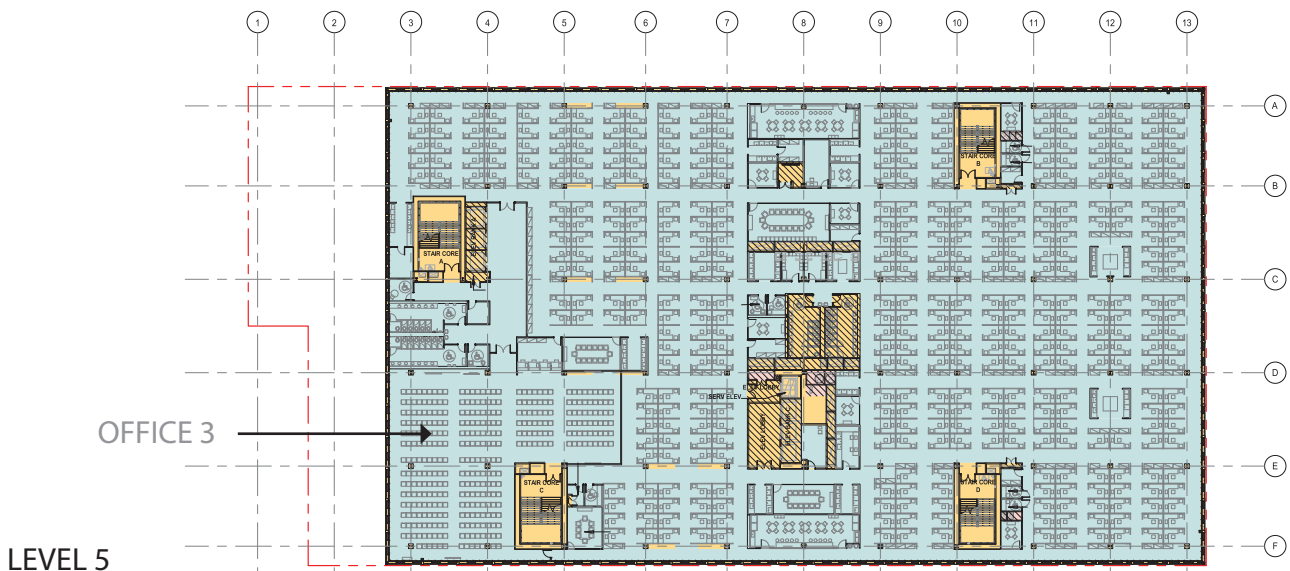


RETAIL 4
7,750SF

LEVEL 3

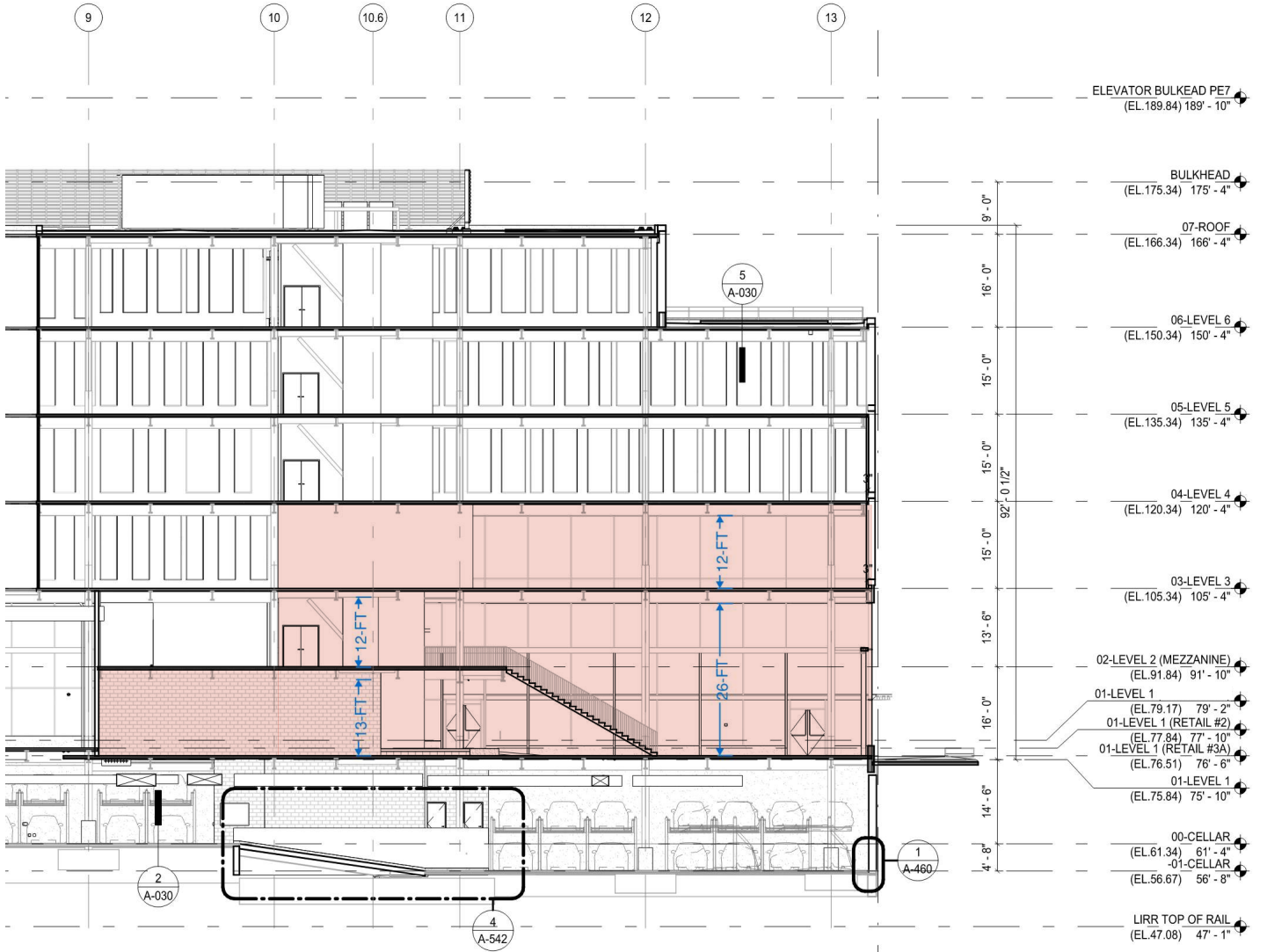


OFFICE 1
21,576SF

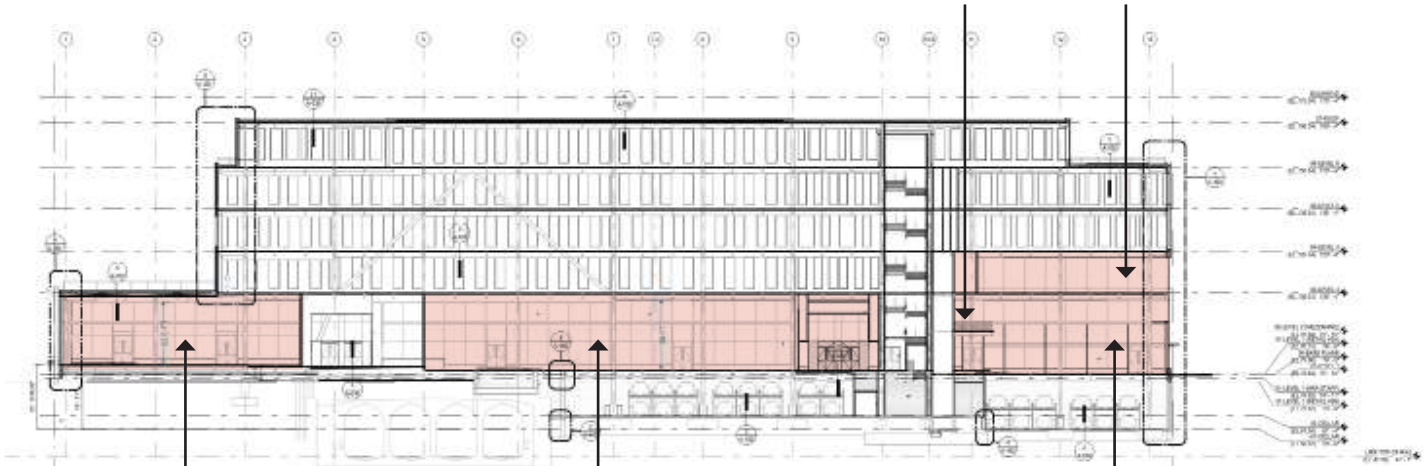




CEILING HEIGHTS



RETAIL 4 OFFICE 1
12-FT 12-FT



RETAIL 1
22.5-FT

RETAIL 2
26-FT

RETAIL 3
26-FT

ALL CEILING HEIGHTS ARE APPROXIMATE AND FOR REFERENCE ONLY.



LOCATION PLAN



Nick Zweig
Locations Commercial Real Estate Ltd.
3839 Flatlands Avenue
Brooklyn NY 11234
Tel. (718) 567-4960
Fax (718) 228-6767
Cel. (917) 804-4338
nzweig@locationscre.com

