

3722-3776 SE Ocean Blvd,
Stuart, FL 34996

RETAIL UNITS AT HARBOUR BAY
PLAZA IN SEWALL'S POINT



ALEX AYDELOTTE
Broker | Principal
O: 772.223.3646 C: 772.263.1130
E: alex@florida-commercial.net

816 SF -
1,555 SF

Sewall's Point
1-2 Units

EXECUTIVE SUMMARY

3722-3776 SE Ocean Blvd, Stuart, FL 34996 | RETAIL UNITS AT HARBOUR BAY PLAZA IN SEWALL'S POINT

SPECS

Unit# 3758 Size: 1,555 SF
Unit# 3748 Size: 816 SF
Price: \$20 Per SF + \$6 CAM / YR / NNN
Total Plaza Size: 65,756 SF
Lot Size: 4.95 AC

PROPERTY OVERVIEW

Harbour Bay Plaza, located in the Heart of Sewall's Point, is a 65,756 sq. ft. High-End Mixed Use Boutique Plaza with interior open-air courtyards featuring a collection of Restaurants, Clothing Stores, Galleries, Gift Shops, Professional Offices, and more. Many tenants have been established in this Iconic Plaza for two decades or more! Restaurants include The Catch Neighborhood Bar & Grill (New!), Josephine's Cafe & Bistro, and Yaowarat Asian Kitchen. Other high-end retailers include Chico's, J McLaughlin, The Gate, See & Sun Optical, Evelyn & Arthur, Sewall's Point Pharmacy, and Kemp's Boutique, mixed with well-known Professionals including One Sotheby's International Realty, Realty One Group Engage, Patty Downing Interiors, Christopher Twohey P.A., and Michael Flaugh L.A.

Located directly on SE Ocean Boulevard at the foot of the Ernest Lyons Bridge in Sewall's Point, Martin County, Florida.





ALEX AYDELOTTE
Broker | Principal
O: 772.223.3646 **C:** 772.263.1130
E: alex@florida-commercial.net

**816 SF -
1,555 SF**

**Sewall's Point
1-2 Units**

AVAILABLE SPACES

3722-3776 SE Ocean Blvd, Stuart, FL 34996 | RETAIL UNITS AT HARBOUR BAY PLAZA IN SEWALL'S POINT

	SPACE	LEASE RATE	SIZE (SF)	DESCRIPTION
	#3758	\$20 SF + \$6 CAM / YR/ NNN	1,555 SF	Unit 3758 in Harbour Bay Plaza offers an exceptional retail location with dual access points and outstanding visibility. The primary entrance sits beside The Catch Restaurant's outdoor bar and main entry to the plaza, capturing strong foot traffic, while a second entrance opens to the beautiful interior courtyard. The space features expansive glass storefront windows, a large open retail area, track lighting, a private bathroom, high-walled areas ideal for fitting rooms, and an upstairs loft perfect for an office or storage.
	#3748	\$20 SF + \$6 CAM / YR/ NNN	816 SF	Unit 3748 in Harbour Bay Plaza offers an inviting retail or boutique space in a highly walkable setting just steps from The Catch Restaurant and neighboring retailers surrounding the plaza's charming courtyard. The suite features large glass storefront windows that provide excellent visibility and natural light, opening into a spacious interior in excellent condition. The layout includes a retail counter, built-in bookshelves, and attractive track lighting that creates a warm and polished atmosphere. Toward the rear, a functional back room offers additional storage with a desk, large built-in shelving, and a private restroom.



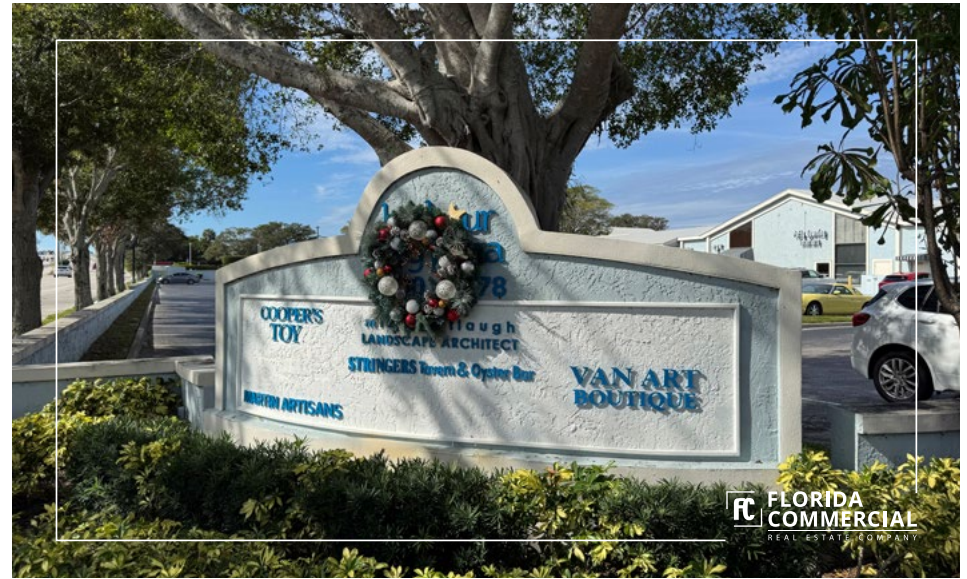
ALEX AYDELOTTE
Broker | Principal
O: 772.223.3646 C: 772.263.1130
E: alex@florida-commercial.net

816 SF -
1,555 SF

Sewall's Point
1-2 Units



FC FLORIDA
COMMERCIAL
REAL ESTATE COMPANY



FC FLORIDA
COMMERCIAL
REAL ESTATE COMPANY



FC FLORIDA
COMMERCIAL
REAL ESTATE COMPANY



FC FLORIDA
COMMERCIAL
REAL ESTATE COMPANY

FC FLORIDA
COMMERCIAL
REAL ESTATE COMPANY



ALEX AYDELOTTE
Broker | Principal
O: 772.223.3646 C: 772.263.1130
E: alex@florida-commercial.net

816 SF -
1,555 SF

Sewall's Point
1-2 Units



FC **FLORIDA COMMERCIAL**
REAL ESTATE COMPANY



ALEX AYDELLOTTE
Broker | Principal
O: 772.223.3646 C: 772.263.1130
E: alex@florida-commercial.net

**816 SF -
1,555 SF**

**Sewall's Point
1-2 Units**

309 SE Osceola Street #104 • Stuart, FL 34994 • 772.223.3646 • florida-commercial.net

©Florida Commercial 2021 • This offering is subject to errors, prior to sale/lease, withdrawal, or change in price, terms or conditions without notice.

UNIT 3758 / 1,555 SF



FC FLORIDA
COMMERCIAL
REAL ESTATE COMPANY



ALEX AYDELOTTE
Broker | Principal
O: 772.223.3646 C: 772.263.1130
E: alex@florida-commercial.net

816 SF -
1,555 SF

Sewall's Point
1-2 Units

UNIT 3758 / 1,555 SF



ALEX AYDELOTTE
Broker | Principal
O: 772.223.3646 C: 772.263.1130
E: alex@florida-commercial.net

**816 SF -
1,555 SF**

**Sewall's Point
1-2 Units**

UNIT 3758 / 1,555 SF

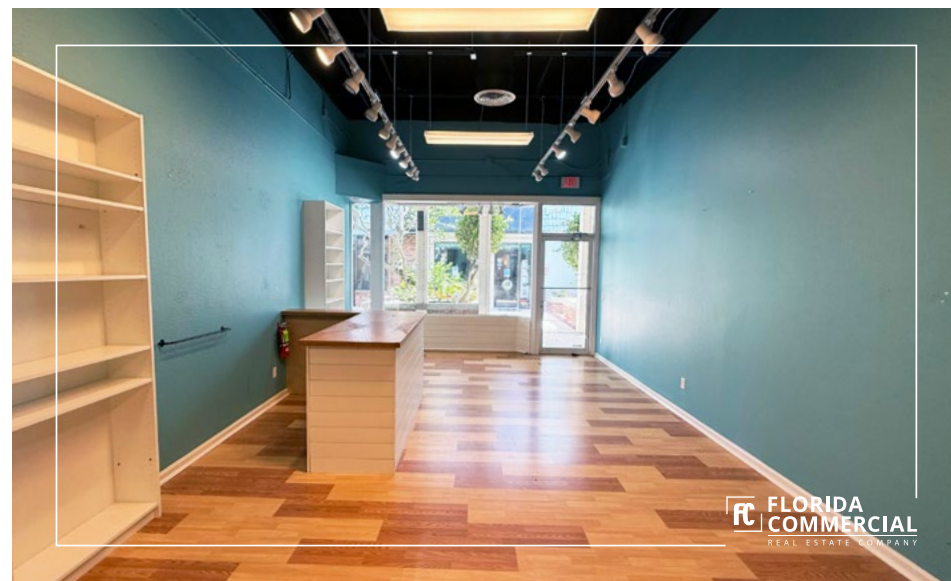


ALEX AYDELOTTE
Broker | Principal
O: 772.223.3646 C: 772.263.1130
E: alex@florida-commercial.net

**816 SF -
1,555 SF**

**Sewall's Point
1-2 Units**

UNIT 3748 / 816 SF

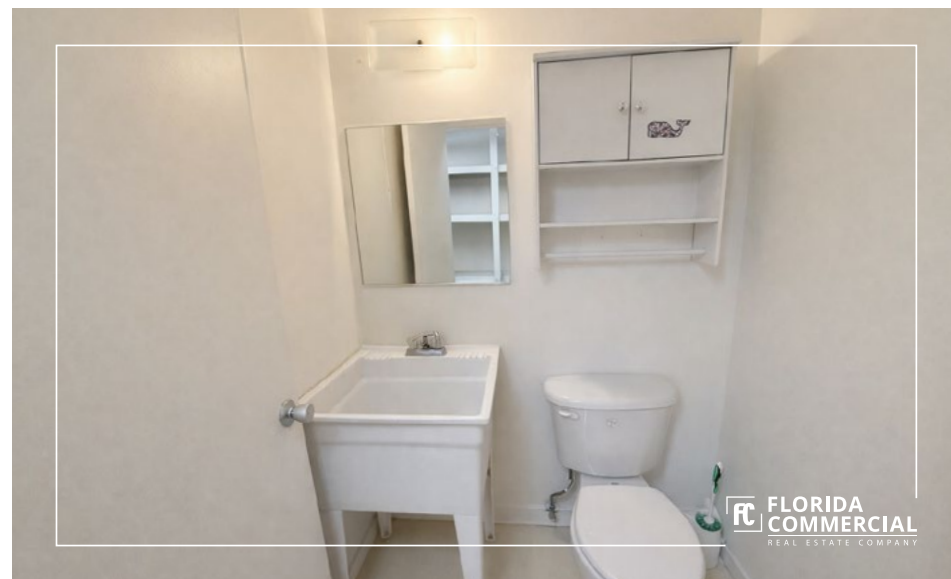
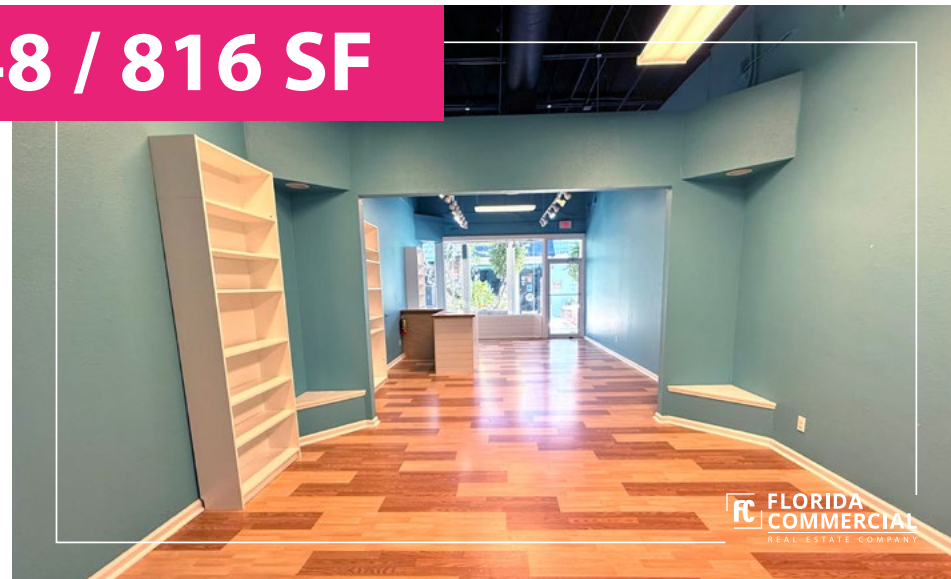


ALEX AYDELOTTE
Broker | Principal
O: 772.223.3646 C: 772.263.1130
E: alex@florida-commercial.net

816 SF -
1,555 SF

Sewall's Point
1-2 Units

UNIT 3748 / 816 SF



ALEX AYDELOTTE
Broker | Principal
O: 772.223.3646 C: 772.263.1130
E: alex@florida-commercial.net

816 SF -
1,555 SF

Sewall's Point
1-2 Units

SITE PLAN

3722-3776 SE Ocean Blvd, Stuart, FL 34996 | RETAIL UNITS AT HARBOUR BAY PLAZA IN SEWALL'S POINT

harbour bay plaza

in the heart of sewall's point



ALEX AYDELOTTE
Broker | Principal
O: 772.223.3646 C: 772.263.1130
E: alex@florida-commercial.net

816 SF -
1,555 SF

Sewall's Point
1-2 Units

MAP & REPORT

3722-3776 SE Ocean Blvd, Stuart, FL 34996 | RETAIL UNITS AT HARBOUR BAY PLAZA IN SEWALL'S POINT



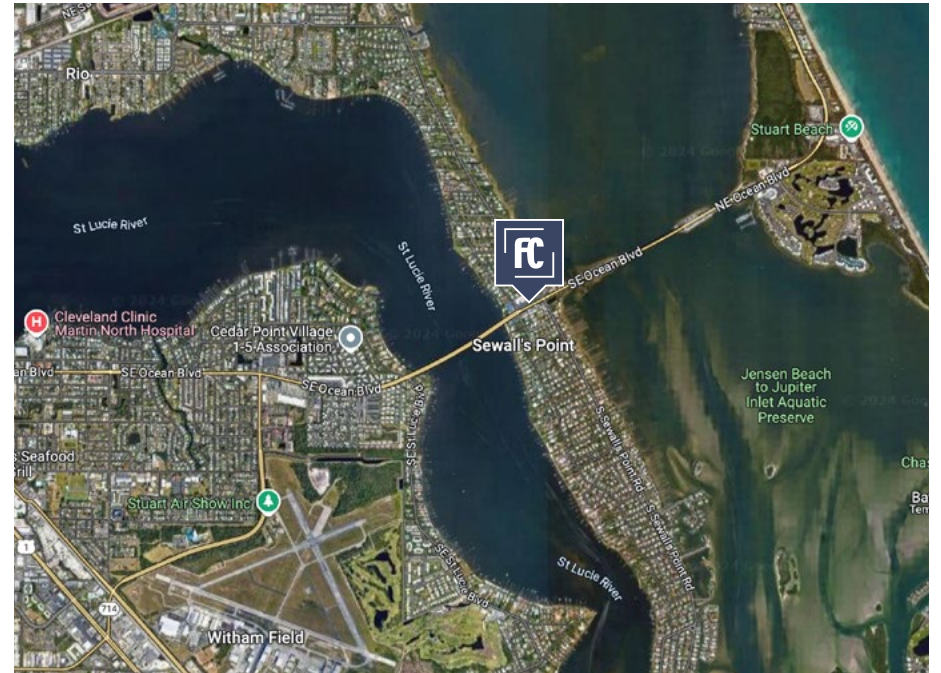
POPULATION

	1 MILE	3 MILES	5 MILES
Population	10.3K	43.2K	110.7K
Median Age	65.7	55.2	53.9



HOUSEHOLDS & INCOME

	1 MILE	3 MILES	5 MILES
Total Households	2.2K	13.2K	34.4K
# of Employees	9.7K	38.1K	96.3K
Average HH Income	\$85.7K	\$72.5K	\$7.4K



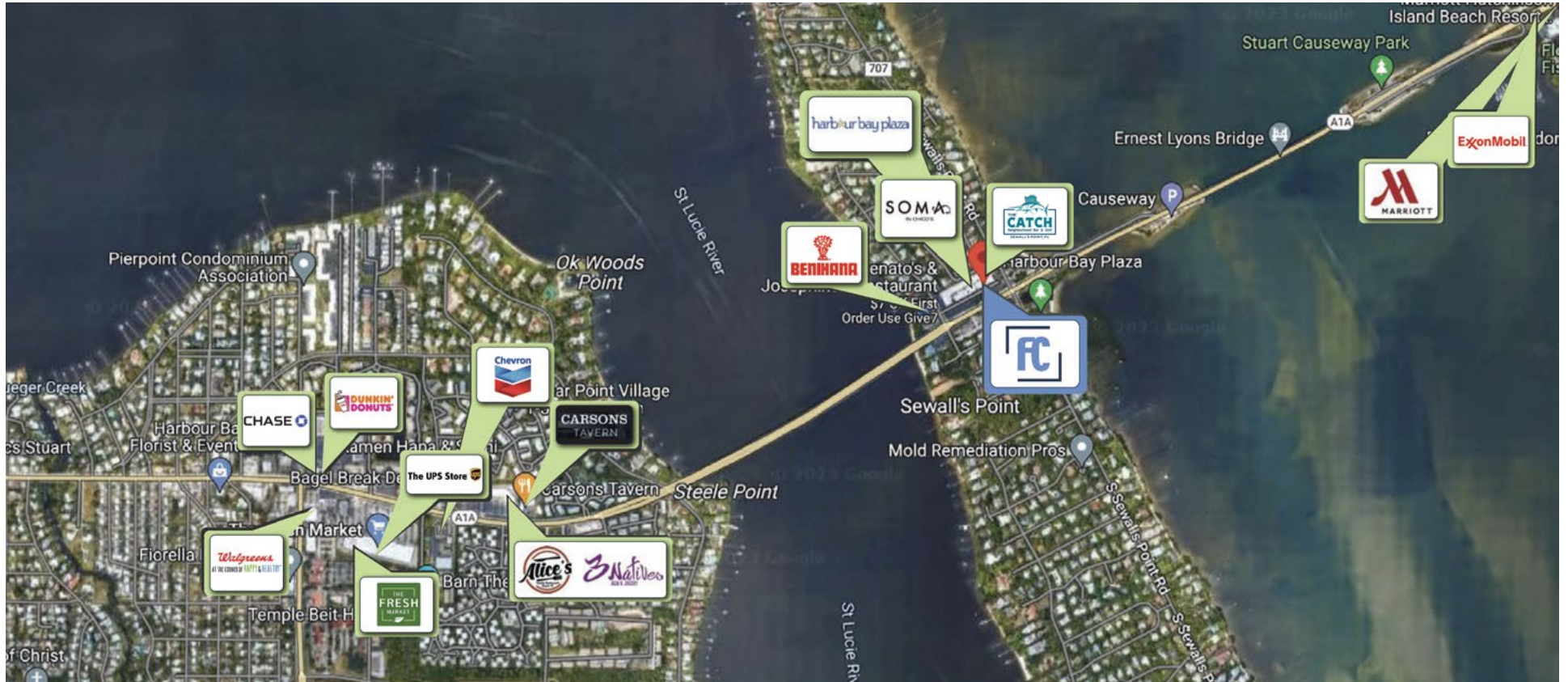
ALEX AYDELOTTE
 Broker | Principal
 O: 772.223.3646 C: 772.263.1130
 E: alex@florida-commercial.net

**816 SF -
 1,555 SF**

**Sewall's Point
 1-2 Units**

RETAIL MAP

3722-3776 SE Ocean Blvd, Stuart, FL 34996 | RETAIL UNITS AT HARBOUR BAY PLAZA IN SEWALL'S POINT



ALEX AYDELOTTE
 Broker | Principal
 O: 772.223.3646 C: 772.263.1130
 E: alex@florida-commercial.net

816 SF -
 1,555 SF

Sewall's Point
 1-2 Units