

Sublease Available

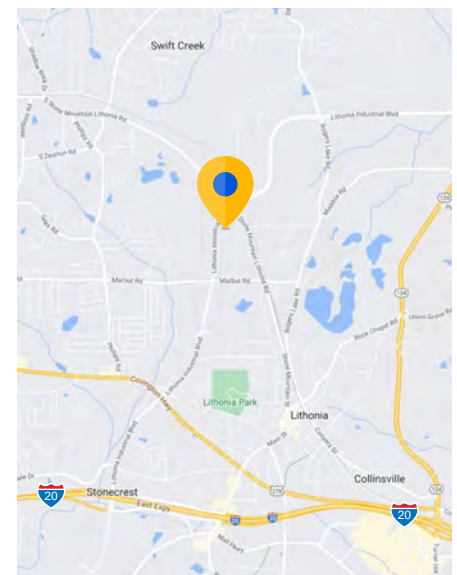
# 1950 Lithonia Industrial Blvd Lithonia, GA 30058

## Overview

Premises:	70,000 SF - 66,500 SF Warehouse, 3,500 SF Office
Term:	Negotiable
Available:	30 Days
Rental Rate:	Please contact
Building Class:	Class C Industrial Warehouse
Ceiling Height:	18'
Doors:	8 Docks, 4 with Levelers; 1 Street Level Door (12'x14')
Parking:	60 car parking
Year Built:	1967, renovated 2019
Zoning:	M-1
Acres:	5.84

## Space Specs

- 25' x 40' column spacing
- HVAC in office only
- 3 warehouse exhaust fans
- 7 warehouse gas heaters
- LED lighting throughout
- 1200 amp, 3-Phase power
- Rail served - CSX
- Trailer parking
- Gated outside storage
- Sprinkled - wet system



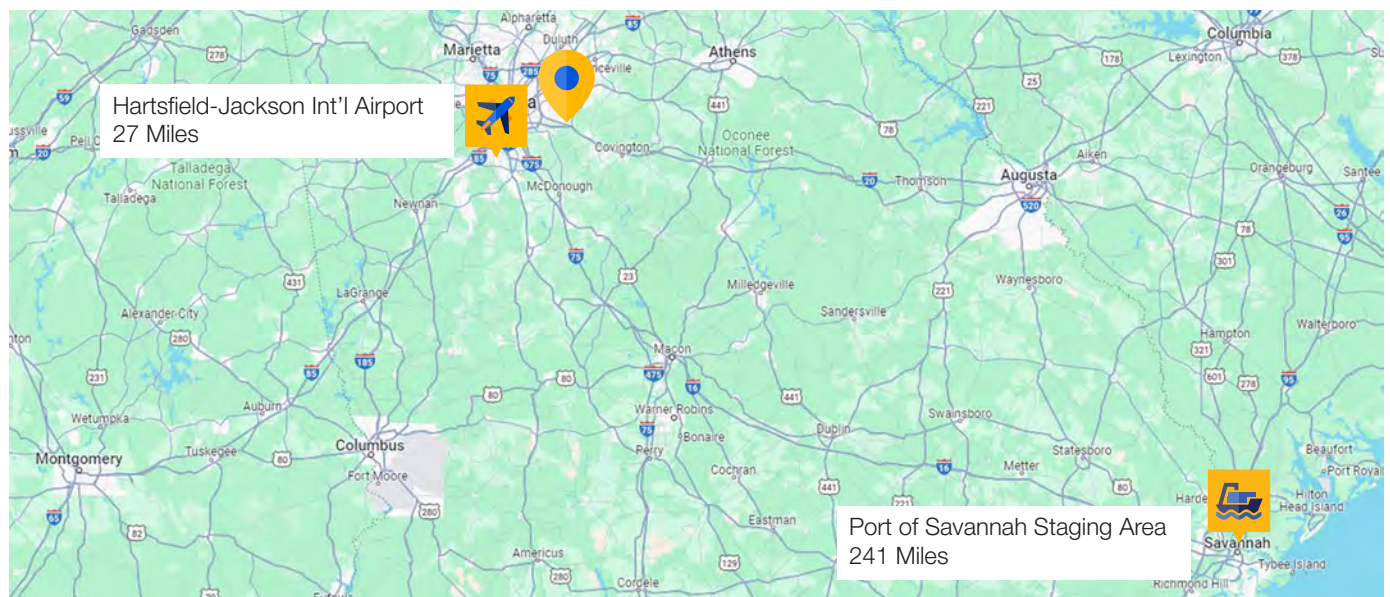
## For more information:



**Scott Hardeman**  
404.446.1863 direct  
shardeman@cresa.com

## 1950 Lithonia Industrial Blvd Lithonia, GA 30058

5 Year Population Growth Rate	1.14%
Labor Force	485,941
Total Unemployment	21,352
Unemployment Rate	4.72%
Average Commute Time	35 Min
Cost of Living Index	95.9
Average Home Price	\$323,076
Average Monthly Rental - 1 Bedroom	\$1,107

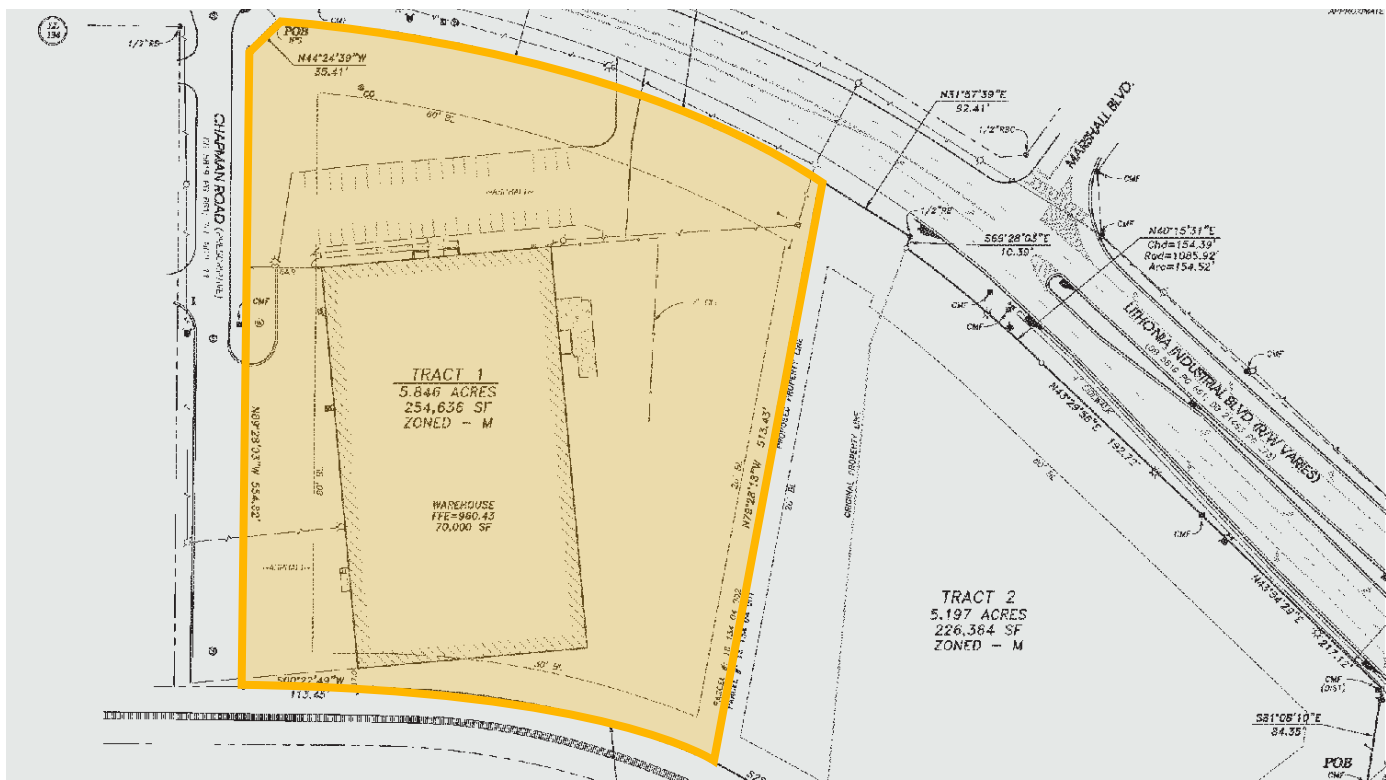
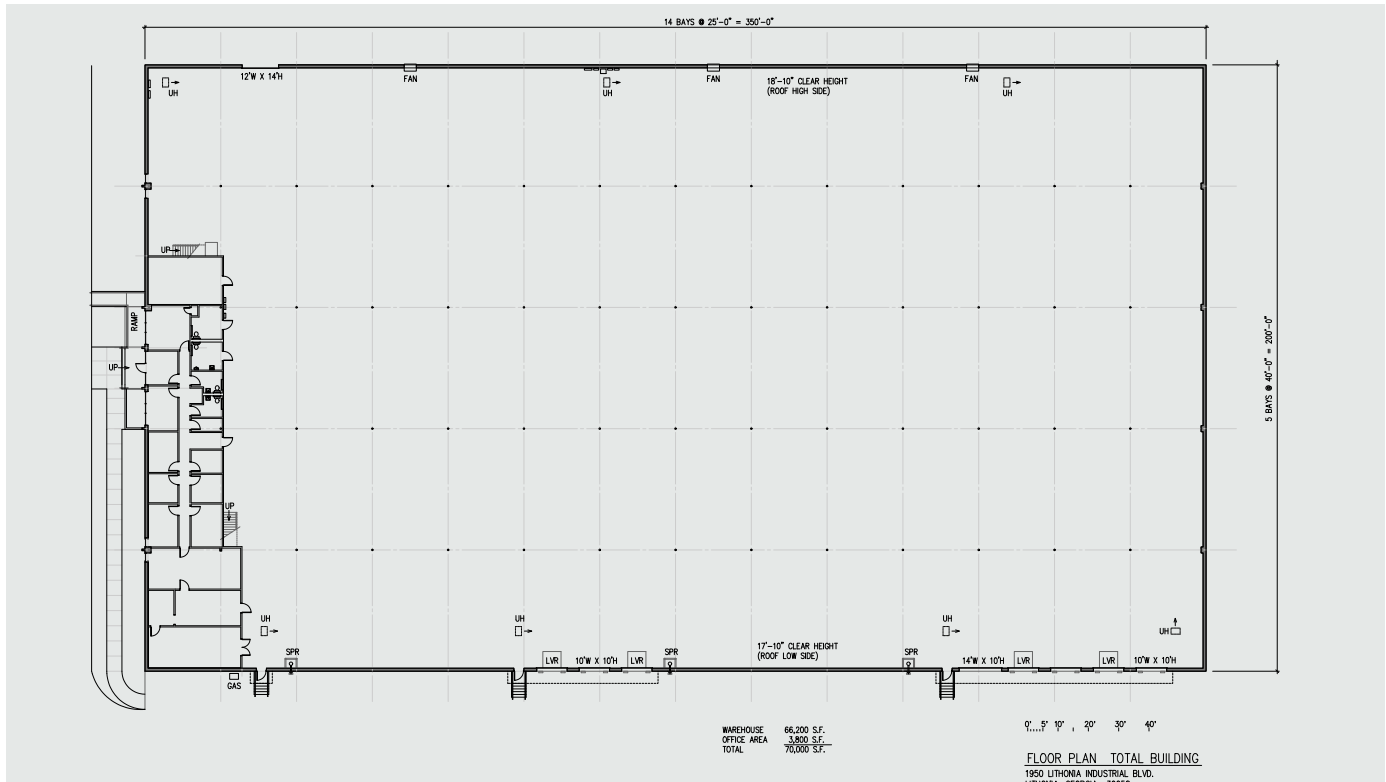


### MSA Labor Cost



# 1950 Lithonia Industrial Blvd

## Lithonia, GA 30058





# 1950 Lithonia Industrial Blvd

Lithonia, GA 30058

