

Industrial | For Sale

INDUSTRIAL CONDOMINIUM

503 Giuseppe Court, Suite 4 | Roseville, CA 95678

PRICE REDUCED



Contacts:

Walter Smyth

Senior Vice President
+1 916 781 4843
walter.smyth@cbre.com
Lic. 00956946

Todd Sanfilippo

Executive Vice President
+1 916 847 3206
todd.sanfilippo@cbre.com
Lic. 01045162

Matt Susac

First Vice President
+1 916 781 4832
matt.susac@cbre.com
Lic. 01979110

CBRE

Industrial Condominium

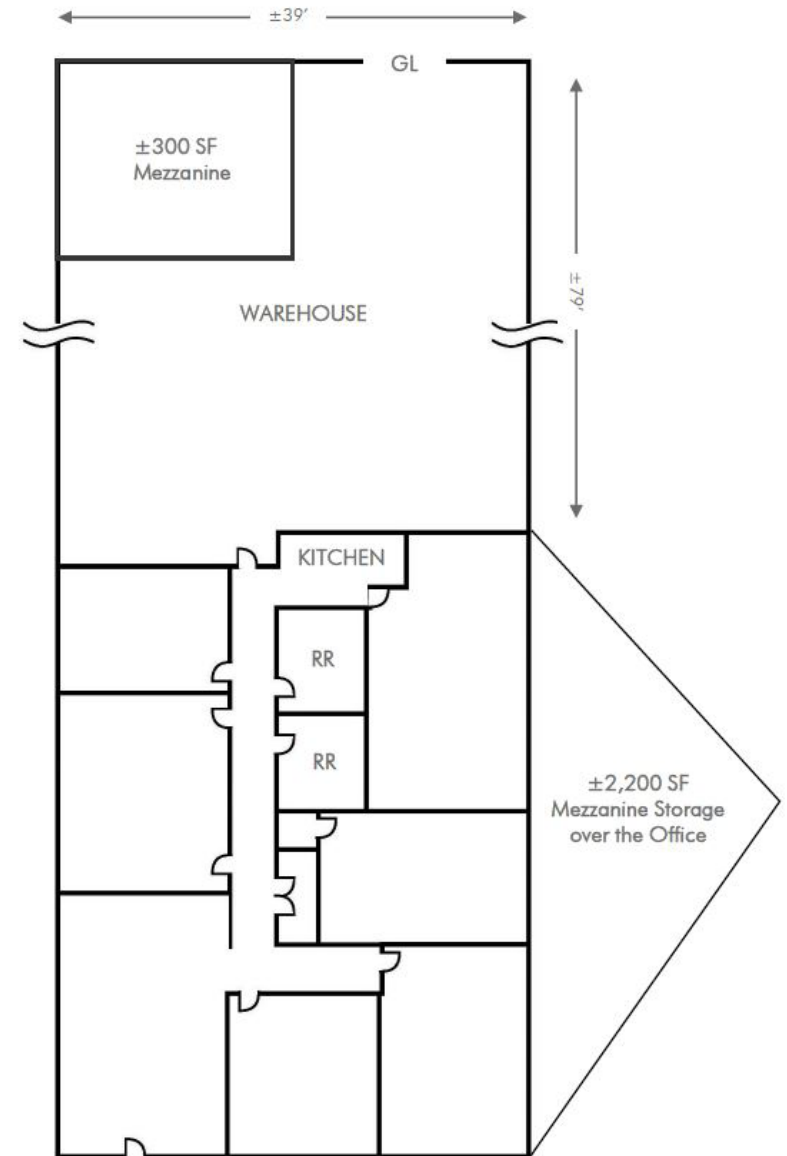
503 Giuseppe Court, Suite 4 | Roseville, CA 95678

For Sale

Property Features

Sale Price: \$1,195,000

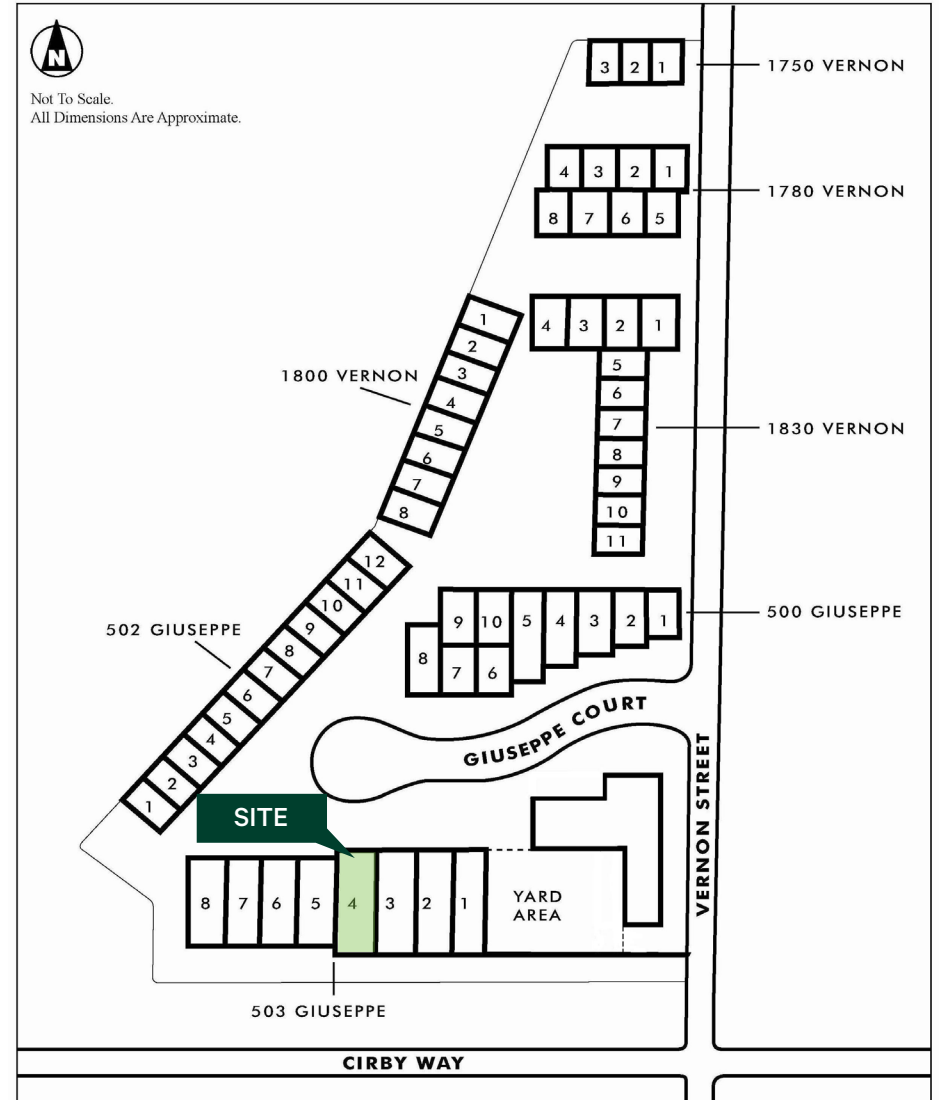
- Total Available: ±5,400 SF
- Office: ±2,200 SF
- Warehouse: ±3,200 SF (heated & cooled)
- Mezzanine/Storage: ±2,200 SF & ±300 SF
- Clear Height: ±16'
- GL Doors: (1) ±12'x14'
- Power: ±200 Amps; 208/110 Volt
- Natural Gas
- Fire Sprinklers
- Semi Truck accessible
- Comcast internet provider
- Excellent office improvements with built-in cabinets
- Central location with close freeway access to I-80



FLOOR PLANS ARE NOT TO SCALE—ALL DIMENSIONS ARE APPROXIMATE.

CBRE

Site Plan & Interior Photos

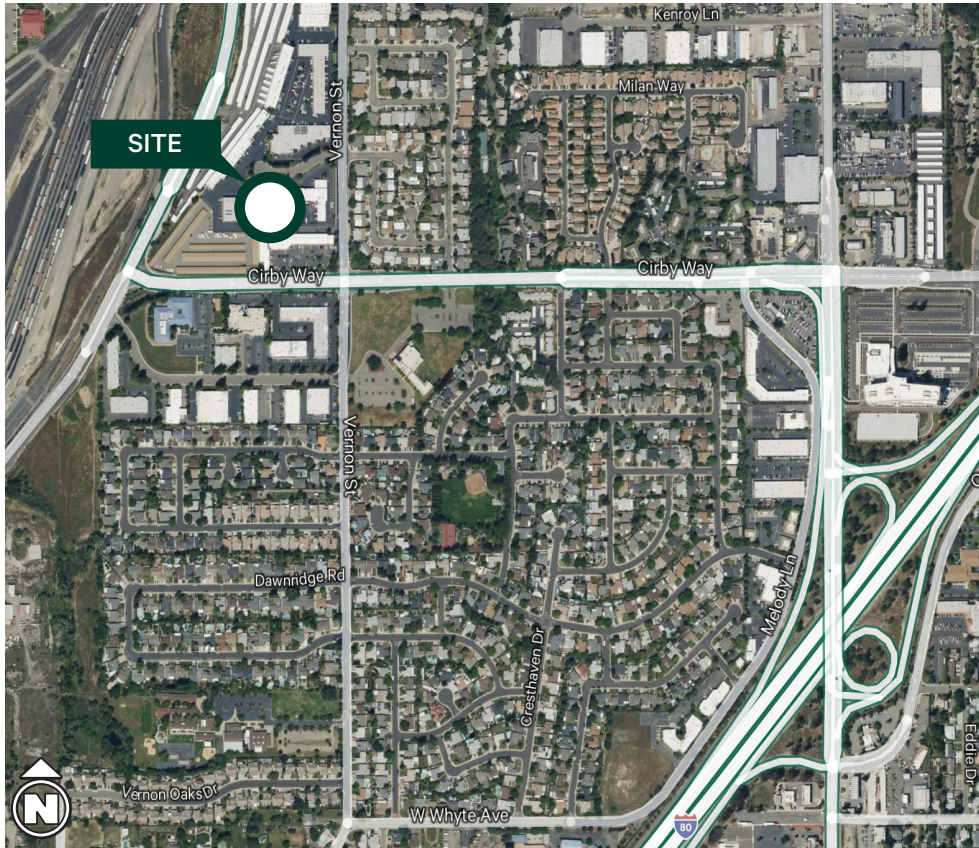


Industrial Condominium

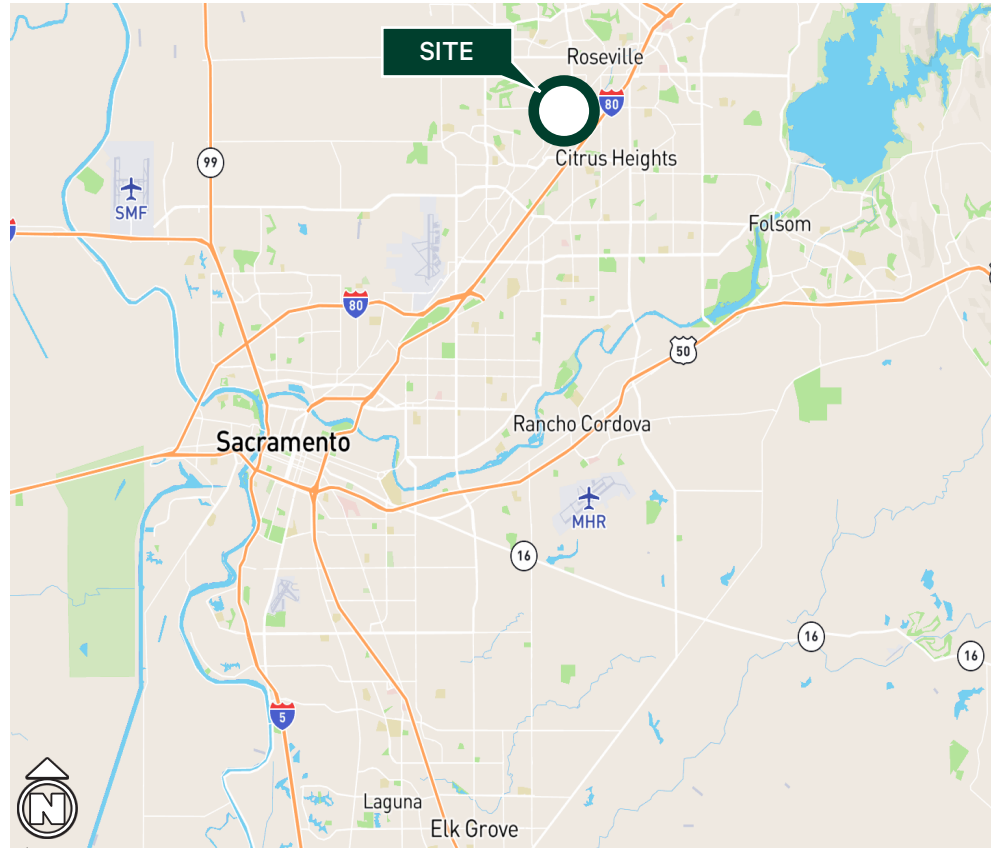
503 Giuseppe Court, Suite 4 | Roseville, CA 95678

For Sale

Aerial Map



Regional Map



MAPS NOT TO SCALE

© 2024 CBRE, Inc. All rights reserved. This information has been obtained from sources believed reliable, but has not been verified for accuracy or completeness. You should conduct a careful, independent investigation of the property and verify all information. Any reliance on this information is solely at your own risk. CBRE and the CBRE logo are service marks of CBRE, Inc. All other marks displayed on this document are the property of their respective owners, and the use of such logos does not imply any affiliation with or endorsement of CBRE. Photos herein are the property of their respective owners. Use of these images without the express written consent of the owner is prohibited.

