

5308 E 2ND STREET | LONG BEACH, CA

Unit #B +/- 2,100 Square Feet



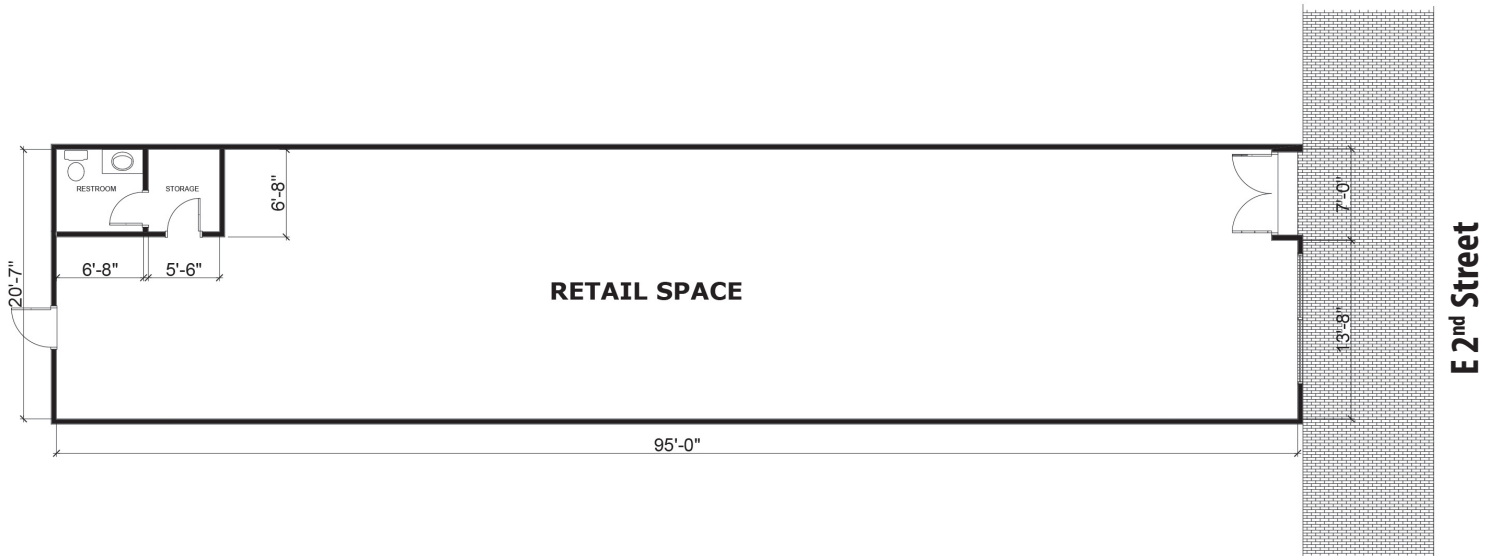
HIGHLIGHTS

- Highly Visible Prime East 2nd Street Corner Location
- Great Demos:
 - One Mile: Average Household Income (AHI): \$139,702
 - Three Mile Trade Area: 205,702 population; \$101,012 AHI and 71% college educated (2020)
- Belmont Shore's East 2nd Street is a Busy Thoroughfare with 35,300 Vehicles per day and is Long Beach's Premier Shopping, Dining and Entertainment District
- Belmont Shore is the Host to one of the Largest One-Day Car Shows on the West Coast each September and the Annual Christmas Parade in December
- Located Less than 1.5 miles from Belmont Shore is the New 2nd & PCH, a 215,000 Square Foot Open-Air Coastal Lifestyle Project Anchored by Whole Foods and Numerous Restaurant Venues

PROPERTY OVERVIEW

Marcus and Millichap REIS is please to represent the leasing of 5308 E 2nd Street, Long Beach, CA. An approximately 4,200 square foot retail building located in the heart of the prime retail corridor of Belmont Shore. The building was originally built in 1930 and is currently subdivided into two separate shop spaces. Unit A is currently occupied by Long Beach Clothing Co. a retail branded clothing and general merchandise store. Unit B previously occupied by Goodies Home Store is currently vacant and available for lease.

There are many noteworthy restaurants, retailers, financial service businesses and popular entertainment and bar venues on E 2nd Street. Surrounding E 2nd Street is the residential district of Belmont Shore, a densely populated beach community including cottage style homes, renovated and expanded luxury homes and unique multi-family apartment residences all blocks to the sandy beaches, marinas, lagoons and picturesque canals.



Aerial Map / Partial Tenant Directory of E 2nd Street

