



# FOR LEASE

70,542 SF  
AVAILABLE NOW

4820 NORTH CHURCH LANE SE

ATLANTA, GEORGIA 30339

16,380 - 104,391 SF AVAILABLE



# 4820 NORTH CHURCH LANE SE

ATLANTA, GEORGIA 30339

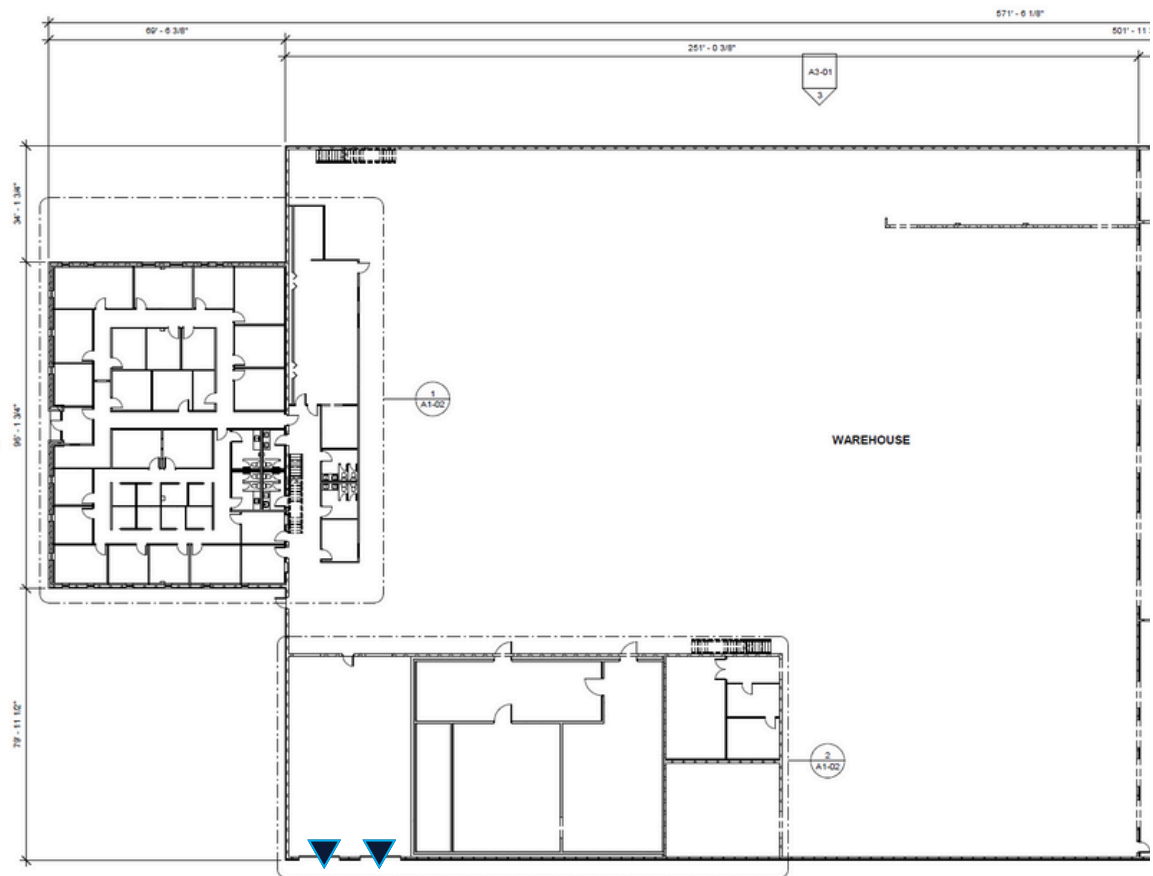
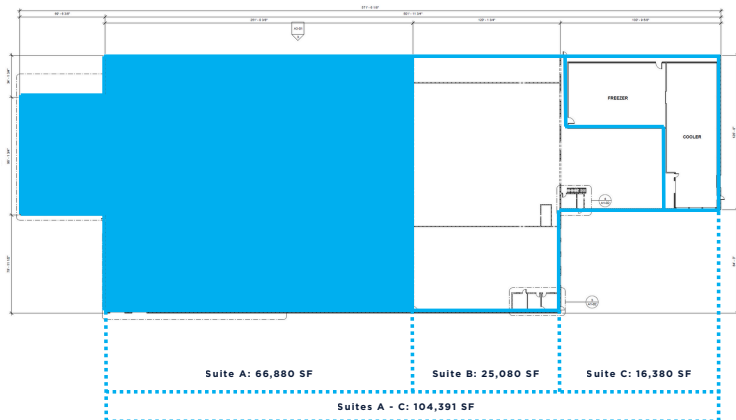
SUITE A | 70,542 TOTAL SF

70,542 TOTAL SF

## SUITE INFORMATION

<b>Total Size:</b>	70,542 SF
<b>Office:</b>	14,421 SF
<b>Warehouse:</b>	56,121 SF
<b>Loading:</b>	Two (2) Drive-In Ramps
<b>Clear Height:</b>	24'
<b>Available:</b>	Immediately

FULL BUILDING (104,391 SF) ALSO  
AVAILABLE FOR LEASE



 **DRIVE-IN DOOR**



# AERIAL



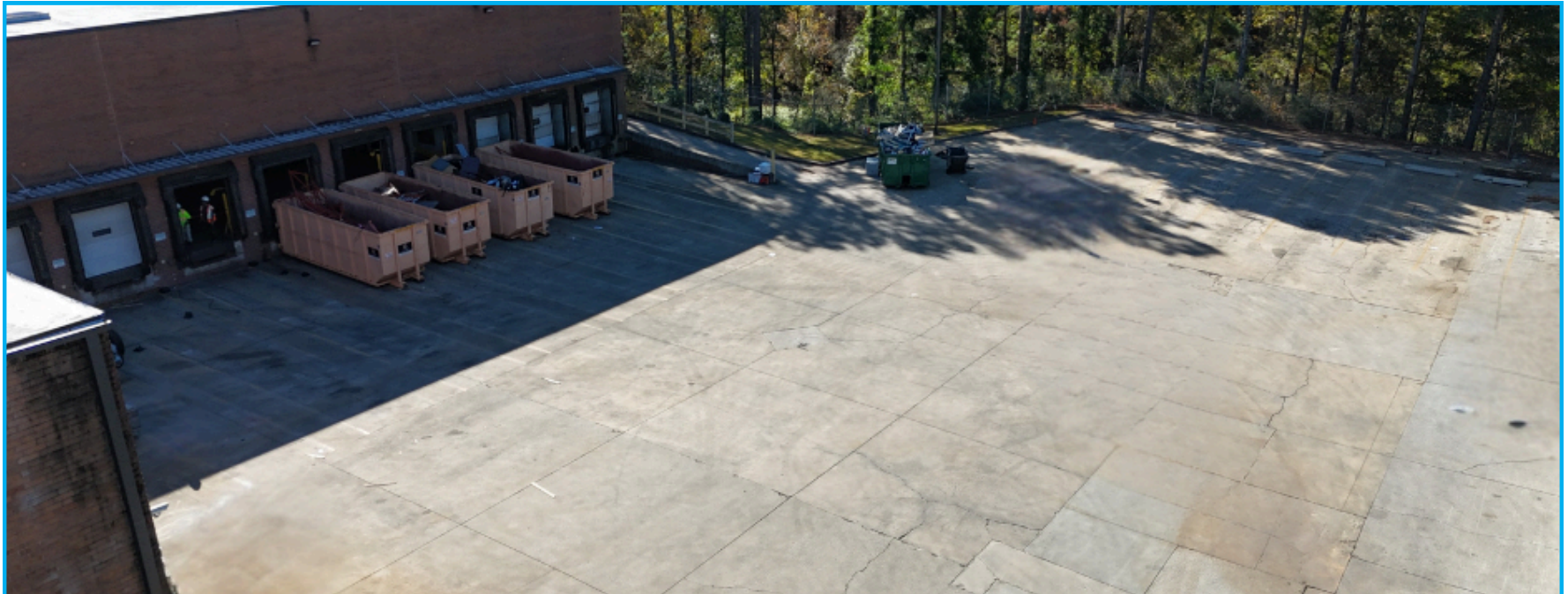


# TRUCK COURT





# ADDITIONAL PHOTOS





# PREMIER LOCATION

## **I-285:**

Situated less than a mile away, this premier highway encircles the Atlanta metropolitan area, connecting to all other major interstates serving the city.

## **I-75:**

4 miles from the property, offering access to Chattanooga, Tennessee, to the north and Macon, Georgia, and Florida to the south.

## **I-20:**

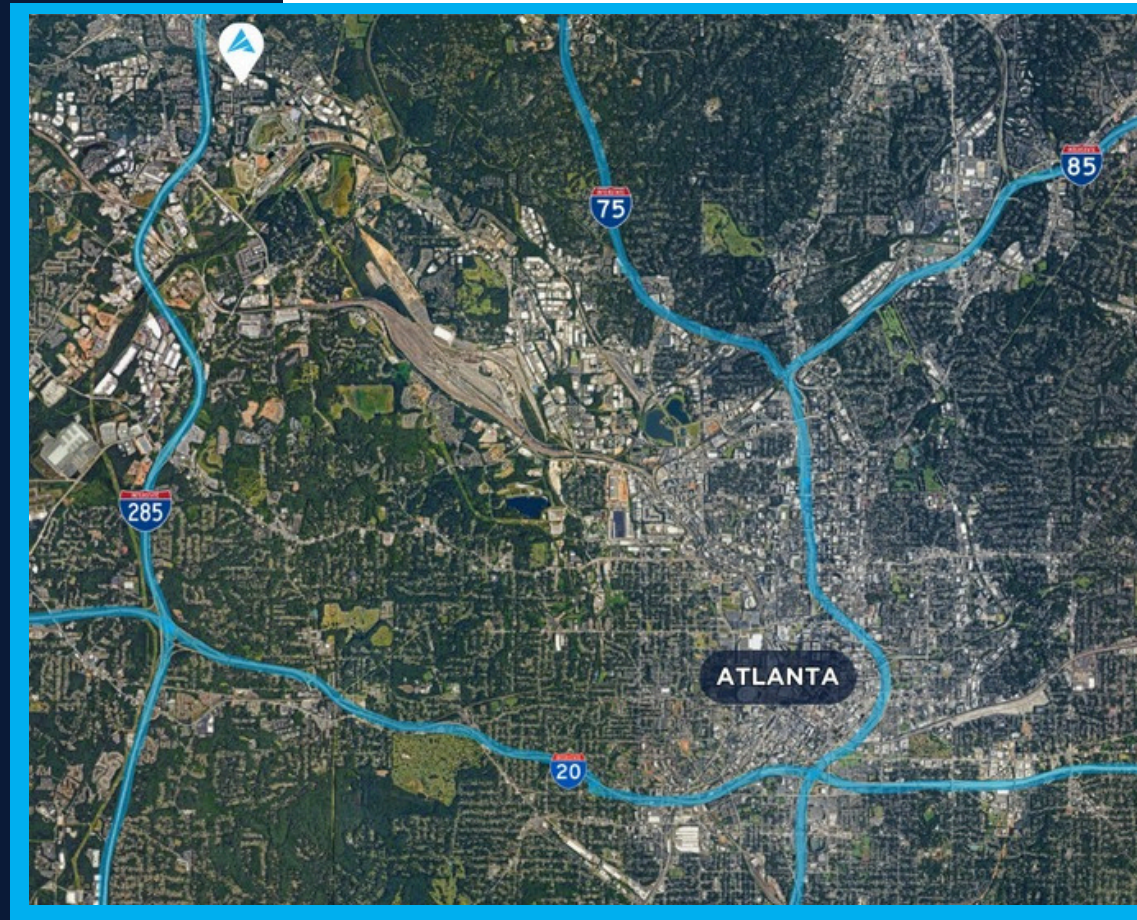
Located 7.5 miles away, providing connections to Birmingham, Alabama, to the west and Augusta, Georgia, and Columbia, South Carolina, to the east.

## **I-85:**

Located just 8 miles from the property, northbound on I-85 connects you to Greenville, South Carolina, Charlotte, North Carolina and beyond, while southbound leads to Atlanta and points south, including Montgomery, Alabama and ultimately, Mobile, Alabama.

## **Hartsfield-Jackson Atlanta International Airport:**

Situated 20 miles away, providing convenient access to domestic and international destinations worldwide.







## 4820 NORTH CHURCH LANE SE

NORCROSS, GA 30093

### PROPERTY HIGHLIGHTS

<b>Total Size:</b>	104,391 SF
<b>Total Office:</b>	15,621 SF
<b>Total Warehouse:</b>	88,770 SF
<b>Loading:</b>	Nine (9) Dock High Doors Three (3) Drive-In Ramps
<b>Clear Height:</b>	24'
<b>Available:</b>	Immediately
<b>Location:</b>	+/- 0.8 miles from I-285 +/- 4 miles from I-75 +/- 7.5 miles from I-20 +/- 8 miles from I-85 +/- 20 miles from Atlanta Airport



# CONTACT INFORMATION



**ANDY HEAD**

**Office:** (404) 595 - 1466

**Cell:** (404) 713 - 4601

[ahead@apexindustrialre.com](mailto:ahead@apexindustrialre.com)

