



EXCLUSIVE LISTING OFFICE CONDO FOR SALE OR LEASE

(856) 985-9522 • ROSECOMMERCIAL.COM

Willow Ridge Executive Park 750 Route 73 South, Suite 201 B, Marlton, NJ



Property Description: Available:

Office Condo with Open Floor Plan
2,054 +/-SF, Suite 201 B
(2nd and 3rd Floor)

Lease Rate:

\$17.00 /SF Plus Utilities

Taxes:

\$5,400.00 (2025)

Condo Fees:

\$439.17/ Month

Sale Price:

\$260,000.00

Comments:

- Conveniently located on Route 73
- 2 story open loft offers creative team workspace
- Many nearby amenities including, restaurants, banks and shopping
- Close proximity to Virtua Hospital and minutes from Route 70, I-295 and the New Jersey Turnpike

Brett Davidoff (ext. 27)

bdavidoff@rosecommercial.com

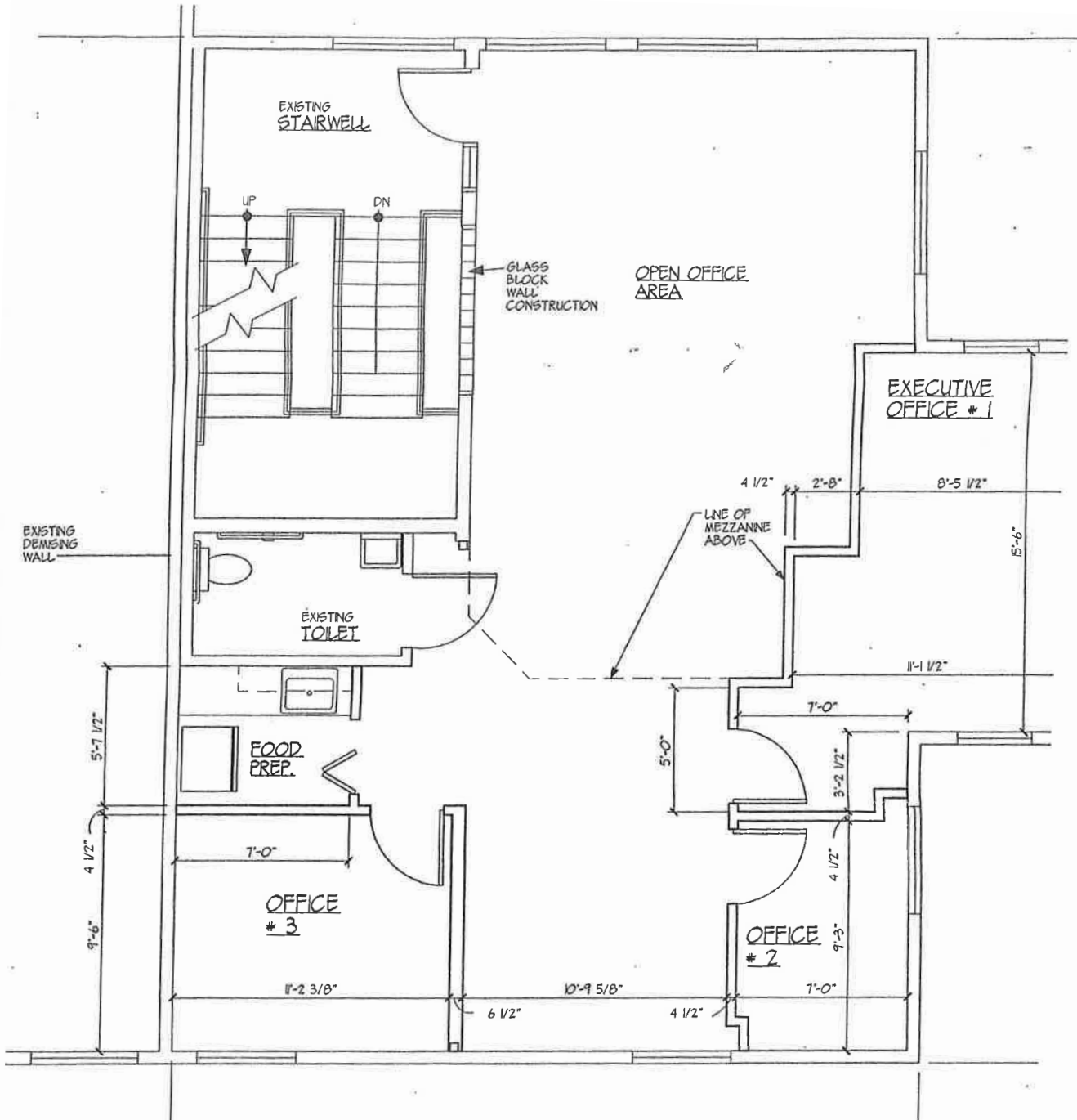
(856) 985-9522

Rose Commercial Real Estate is a full service commercial real estate firm, specializing in all facets of the industry ~ representing buyers and sellers, landlords and tenants as well as investors both big and small. Key to our growth is experience combined with in depth understanding of the South Jersey real estate market. But that alone is only a part of the comprehensive service we provide clients. With our unique **CIRCLES FOR SUCCESS** and start-to-finish commitment, we make things happen.

651 Route 73 North, Suite 111 • Marlton, NJ 08053 • Phone: (856) 985-9522 • Fax: (856) 985-9488

ROSECOMMERCIAL.COM

FLOOR PLANS - SECOND FLOOR





EXCLUSIVE LISTING OFFICE CONDO FOR SALE OR LEASE

(856) 985-9522 • ROSECOMMERCIAL.COM

FLOOR PLANS - LOFT

