



OFFICE FOR LEASE

2858 FRANKLIN STREET
AVONDALE ESTATES, 30002



LEASE THE ENTIRE TOP FLOOR | 1,400 SQ FT

Looking for the perfect workspace to call your own? Look no further! This private office space nestled in the highly sought-after Avondale Estates is the one! This exceptional opportunity grants you the entire top floor, ensuring an exclusive and productive environment. Step into the building and ascend the stairs, where French doors lead to your personal work oasis. As you enter, a spacious reception area welcomes you – an ideal spot for impressing clients.



CONNIE BRIDGES
REALTOR

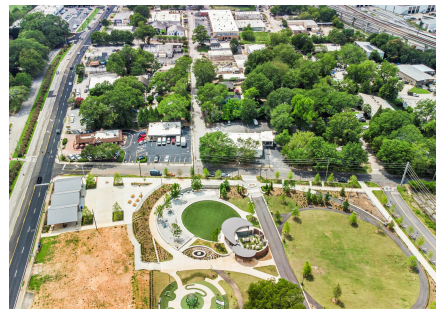
678-758-1011 (Direct)
404-844-4198 (Office)
Connie@ConnieBridges.com
conniebridges.atlcommunities.com/





Your future work home ~

Abundant natural light pours through the expansive windows, creating an inviting and energizing atmosphere that will fuel productivity. Avondale's charm truly comes alive at night, with vibrant breweries and an array of delectable eateries waiting to be explored; a networking paradise right outside your door! Immerse yourself and your business further in the community by partaking in the dynamic events hosted at Town Green Park and Pavillion. Seize this remarkable opportunity to secure a meticulously designed office space that embodies comfort, convenience, and undeniable charm. Call or text Connie to schedule a viewing today.



CONNIE BRIDGES
REALTOR

678-758-1011 (Direct)
404-844-4198 (Office)
Connie@ConnieBridges.com
conniebridges.atlcommunities.com/

The information contained herein has been obtained through sources deemed reliable. However, we cannot warrant the complete accuracy thereof subject to errors, omissions, change of price, rental or other conditions, prior sale, lease or financing, or withdrawal without notice.

