



**New office lease opportunity – Post Road signage, walk to downtown !**

**38 Post Road West, Westport, Connecticut - Fairfield County**



## About the Space

Unique opportunity to lease a competitively priced downtown Westport space.

A five minute walk to Main Street, multiple restaurants, the Saugatuck River, the Levitt Pavillion.

Great Post Road signage ! The space features two charming fireplaces, has private entrance. All offices have windows.

- Address: 38 Post Road West Westport, CT
- Space size: 950 SF
- Rent \$23 per SF Gross plus Utilities
- Utilities: \$3 per SF
- Parking: Ample parking at the property
- Use: office only – medical not allowed in this district
- Available: Immediately

All information subject to errors and omissions





Charming interior



All information in subject to errors and omissions





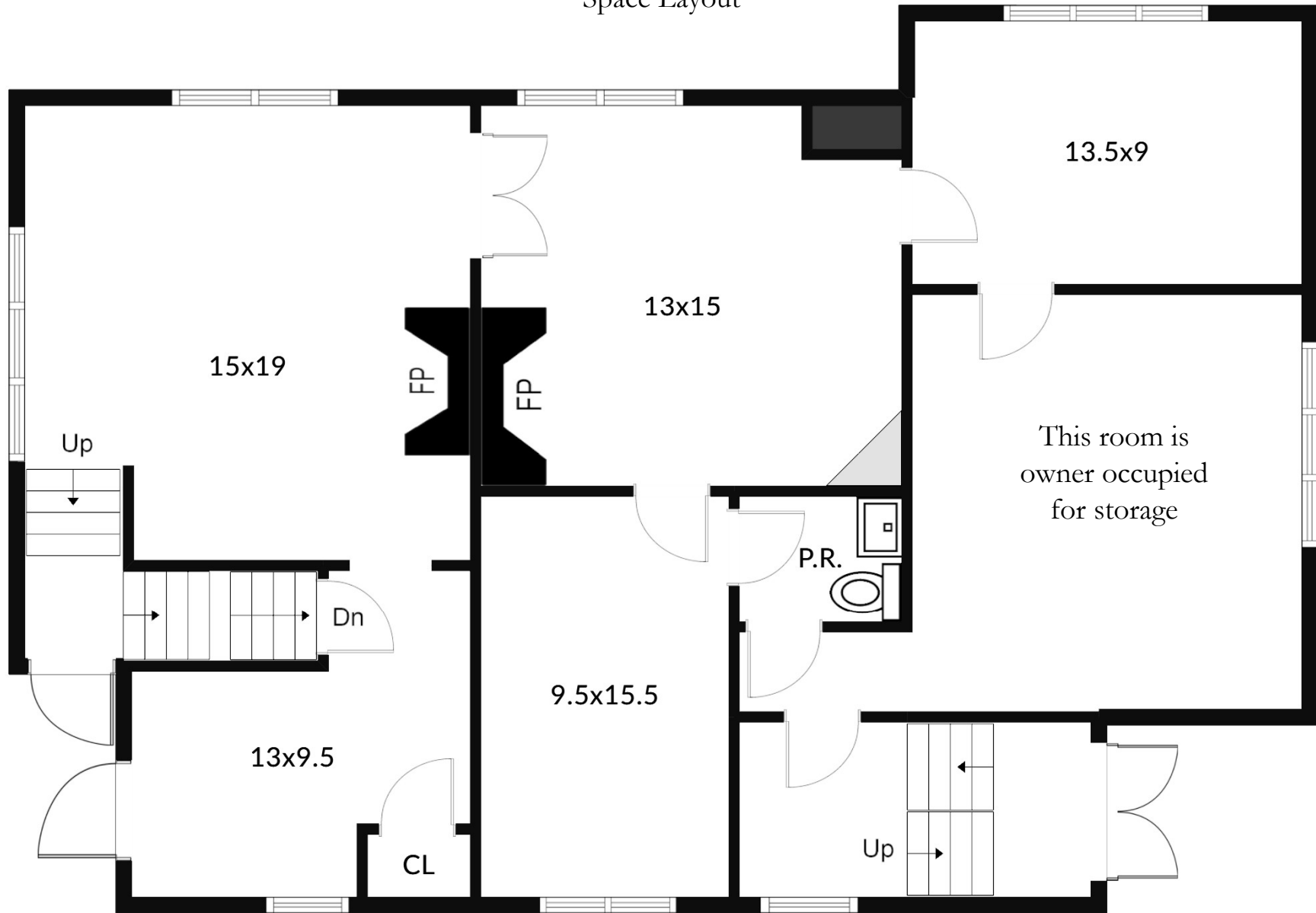
Interior photos

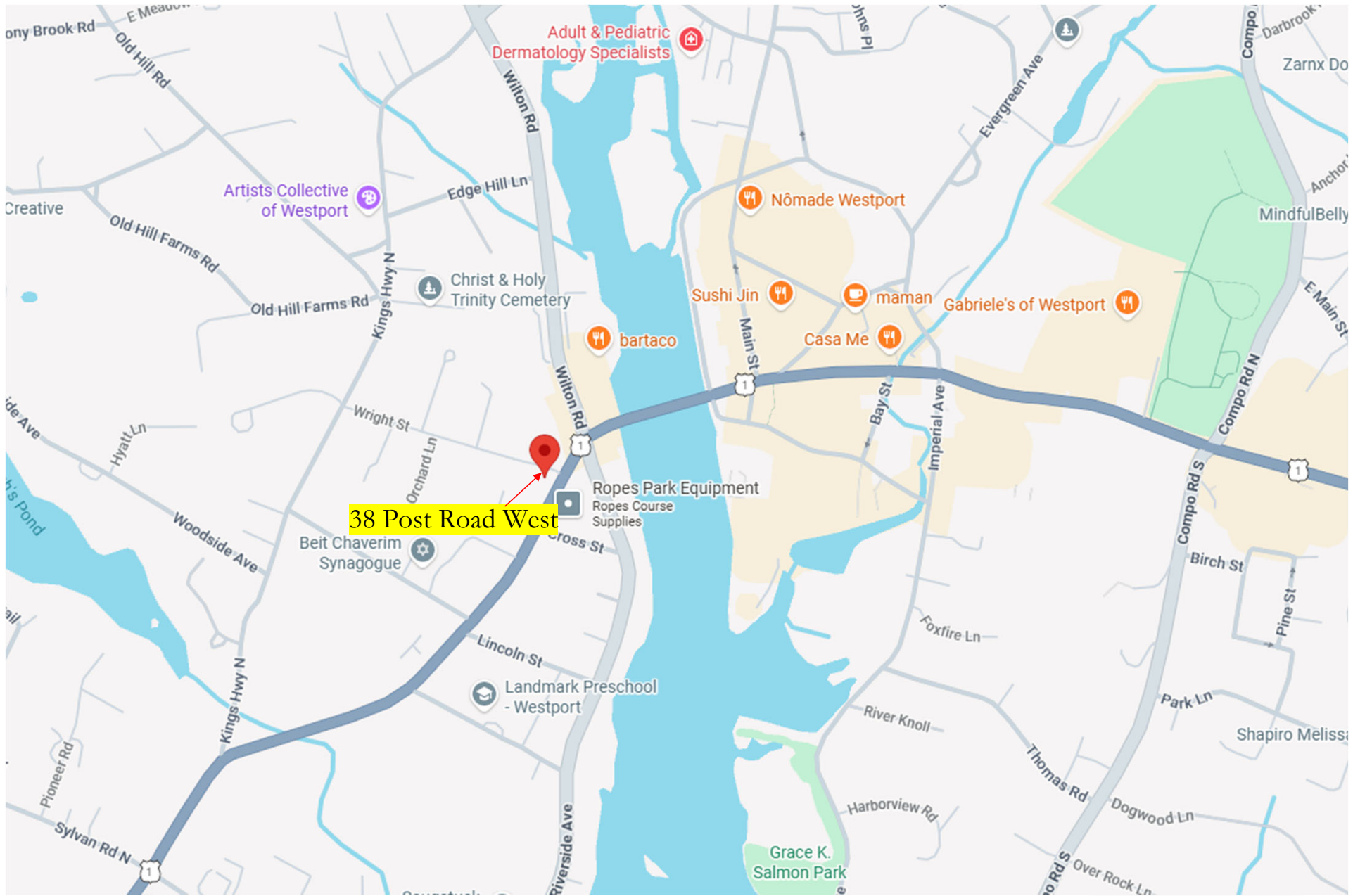


All information in subject to errors and omissions



# Space Layout





38 Post Road West



For additional information, please contact:

Franco Fellah  
Executive Vice President

HK Group II, Inc.  
49 Riverside Avenue  
Westport, CT 06880

E: [ffellah@hkgrp.com](mailto:ffellah@hkgrp.com)  
C: 203.981.3476

The logo consists of the letters 'HK' in a blue, serif font, centered within a white square that has a subtle drop shadow. This square is positioned at the bottom of a vertical blue bar that runs down the left side of the page.

HK