



1025 Cannon Street

Louisville, CO

Lynda Gibbons
lynda@gibbonswhite.com
(303) 586-5920

Steve Sims
steve@gibbonswhite.com
(303) 586-5932

www.gibbonswhite.com

Property Info & Gallery

View Map

Gorgeous Office or Medical Space in Downtown Louisville

Suite 2B	1,437 sq. ft.
3rd Floor	2,415 - 8,915 sq. ft.*
Lease Rate / sq. ft.	\$26.00 NNN
Expenses / sq. ft.	\$15.64**

*\$18.00 NNN First Year Intro Rate for Qualified Tenant; **Including Utilities

- Secure Entire Top Floor with Superb Floor Plan, Includes Large Open Work Areas, Private Offices, Multiple Conference Rooms & a Pleasant Break Area with Well-Equipped Kitchen
- Beautiful, Modern Building in the New & Growing DELO Community Perched on the Eastern Edge of Downtown Louisville
- Plenty of Parking Available On Site & Nearby Public Lot
- Convenient Access from Hwy 42 & Easy Commute for Employees Coming from All Over Boulder County & Denver Metro Area – Only 10 Miles from Downtown Boulder & 20 Miles from Downtown Denver!
 - 10 Minutes from Boulder, University of Colorado, Folsom Field & Pearl Street Mall
 - 20 Minutes from Downtown Denver, Coors Field, Ball Arena & Mile High Stadium
 - 30 Minutes from Denver International Airport
- Short Walk Through the South Street Underpass to All of the Excitement of Downtown Louisville Including Restaurants, Bars, Coffee Shops, Summer Street Fairs & Farmer’s Market!


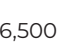




The information included has been obtained from sources believed reliable. While we do not doubt the accuracy of the information, it has not been verified and no guarantee, warranty, or representation is being made.

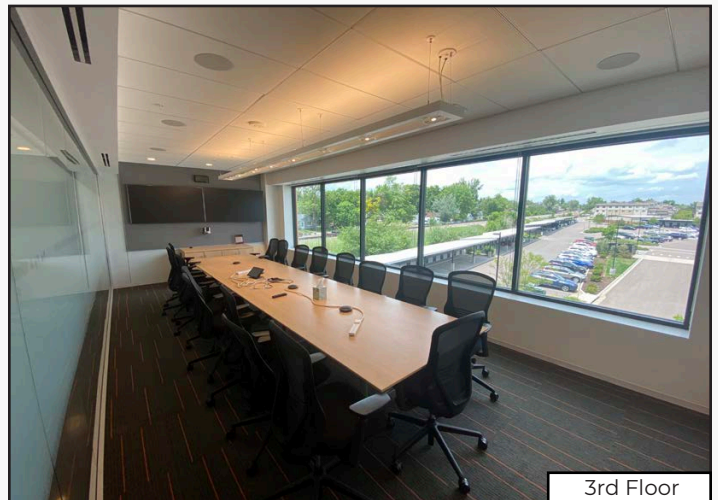
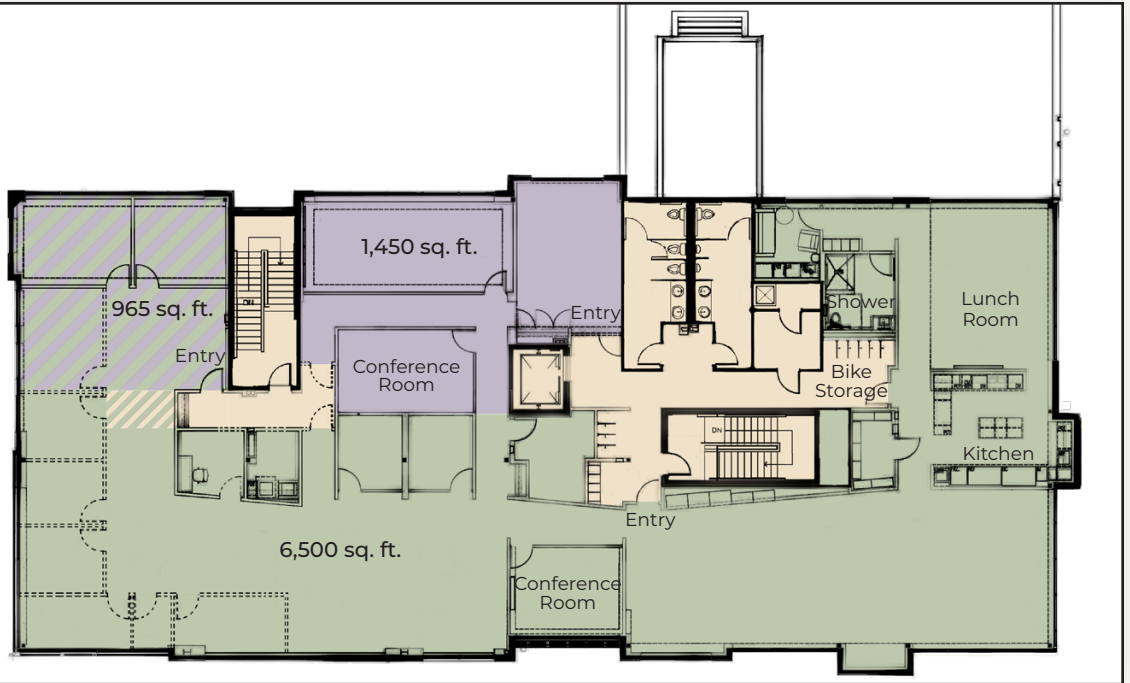


2305 Canyon Blvd, Suite 200, Boulder, CO 80302 - (303) 442-1040

3rd Floor
8,915 sq. ft.

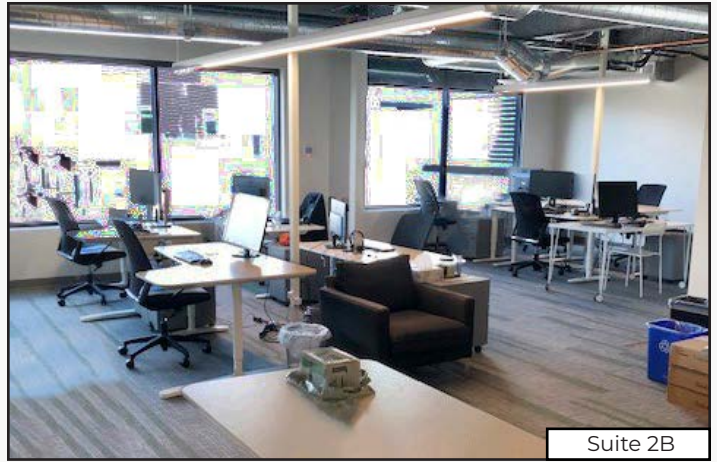
Options to Demise:

-  = 6,500 sq. ft.
-  +  = 7,465 sq. ft.
-  = 1,450 sq. ft.
-  +  = 2,415 sq. ft.



The information included has been obtained from sources believed reliable. While we do not doubt the accuracy of the information, it has not been verified and no guarantee, warranty, or representation is being made.

Suite 2B
1,437 sq. ft.



The information included has been obtained from sources believed reliable. While we do not doubt the accuracy of the information, it has not been verified and no guarantee, warranty, or representation is being made.



The information included has been obtained from sources believed reliable. While we do not doubt the accuracy of the information, it has not been verified and no guarantee, warranty, or representation is being made.