



— THE —  
**ATRIUM**

19100 & 19200 VON KARMAN, IRVINE CA

**FOR LEASE**

For leasing information, please contact us:

**PETER JOYCE | 949.203.3035**

[peter.joyce@streamrealty.com](mailto:peter.joyce@streamrealty.com)

Lic. 02001428

**MIKE ADAMS | 949.203.3033**

[madams@streamrealty.com](mailto:madams@streamrealty.com)

Lic. 01875266

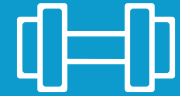


*The Atrium in Irvine, California, offers prime office space with stunning views of the surrounding mountains and sunsets, along with a unique atrium design. Situated centrally near major highways—the 405, 73, and 55—minutes away from UCI Health Irvine Medical Center and just blocks from John Wayne Airport, it's an ideal location for business. The project recently completed an \$11M renovation of the building in 2019-2020. With amenities like onsite parking, casual and formal dining options, a barbershop, and nearby services, The Atrium provides everything a business needs for success in Irvine's thriving corporate community.*





**CONFERENCE  
FACILITIES**



**FITNESS  
CENTER**



**ELECTRIC VEHICLE  
CHARGING**



**NEW LOBBY  
RENOVATIONS**



**DRY CLEANING  
SERVICE**



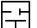








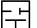
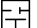

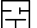


*Bistango*


*Checkers Grill*


**CASSEL EARTH  
COFFEE SHOP**

# AVAILABILITIES

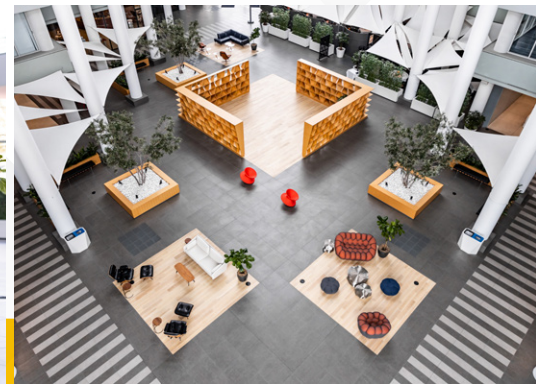
## 19100 VON KARMAN

SUITE	SF AVAILABLE	CONTIG.	SUITE DESCRIPTION
180 	3,159	—	Lobby space with glass fronts, 2 offices, large conference room, kitchen, and large open area.
200 	5,957	—	9 offices, large conference room, kitchen, and large open area.
250 	3,713	—	Double door entry, 7 window offices, conference room, kitchen and reception area.
280  	2,864	—	4 Window offices, 1 interior office, conference room, kitchen and open area.
350  	2,065	—	3 offices, conference room, Kitchen, and large open efficient space.
370 	2,025	—	Corner suite – one office, kitchen, large conference room, and open area. Available May.
400 	4,591	—	Double door entry, 7 window offices, reception area, kitchen, copy area, cubicle space
570 	3,235	—	<b>SPEC SUITE.</b> 3 offices, kitchenette, conference room, and open area. Furniture available.
610 	2,533	8,261 	Conference room and very large open space with expansive glassline.
650 	5,728	8,261 	Double door entry, 4 private offices, conference room, kitchen, storage, and large open area.
800 	15,476	—	Full Floor – 27 offices, 2 conference rooms, 3 kitchens, reception, and storage/IT closets.

 Click to view floor plans

 Click to view virtual tours


Rev. 05.21.26




# AVAILABILITIES

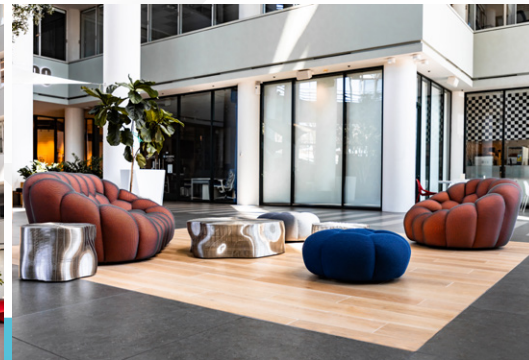
## 19200 VON KARMAN

SUITE	SF AVAILABLE	CONTIG.	SUITE DESCRIPTION
100 	4,722	—	Double door entry, 7 window offices, reception area, conference room, kitchen, and open area.
200 	7,183	—	Double door entry, 7 interior offices, window lined conference room, kitchen, open area and balcony.
300 	2,267	—	Double door entry, 3 window offices, kitchen and copy room.
400 	18,838	—	<b>FULL FLOOR.</b> 47 Private offices, 2 conference rooms, kitchen, reception area with lobby, exterior balcony, bridge access, IT server room, copy area, and storage. Available February 2027
500 	2,348	—	<b>HYPOTHETICAL SPACE PLAN.</b> Modern entry/kitchenette, conference room, 3 private offices, open office area.
510 	7,454	—	Double door entry, 1 window office, 2 interior conference rooms, 8 interior offices and open area.
600 	16,621	—	<b>FULL FLOOR.</b> 40 Private offices, 2 conference rooms, kitchen, reception area with lobby, exterior balcony, bridge access, IT server room, copy area, and storage. Available February 2027
850 	4,185	—	Double door entry, 6 window offices, 2 conference rooms, 1 interior office, kitchen & storage room. Available September.
900 	3,652	8,286 	Double door entry, 4 window offices, 2 interior offices, kitchen, conference room & storage room, bridge access.
920 	943	8,286 	2 window offices, kitchen, open office area. Available July 2026.
940  	3,681	8,286 	8 window offices, kitchen and open area.

 Click to view floor plans

 Click to view virtual tours

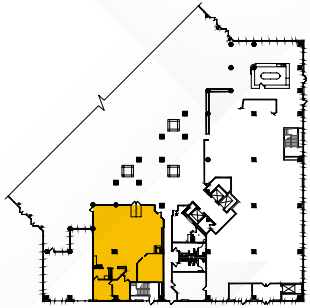
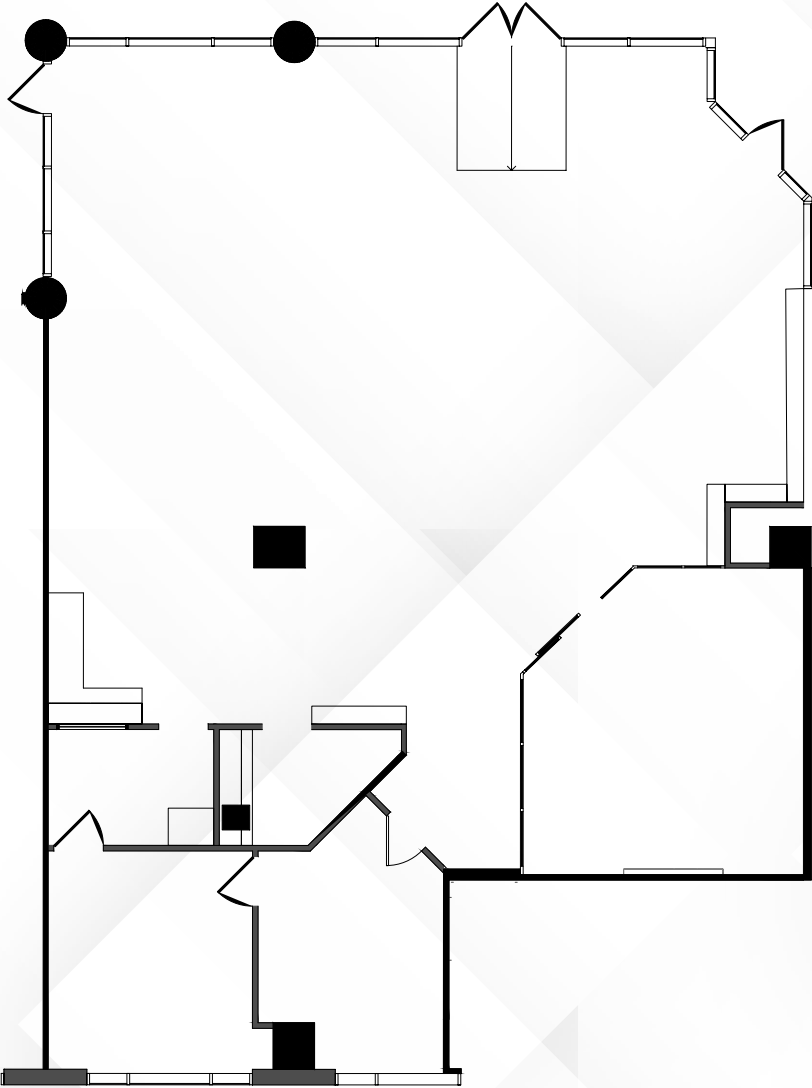
Rev. 05.21.26



AVAILABILITIES

**19100 | Suite 180**

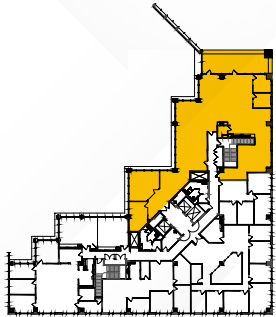
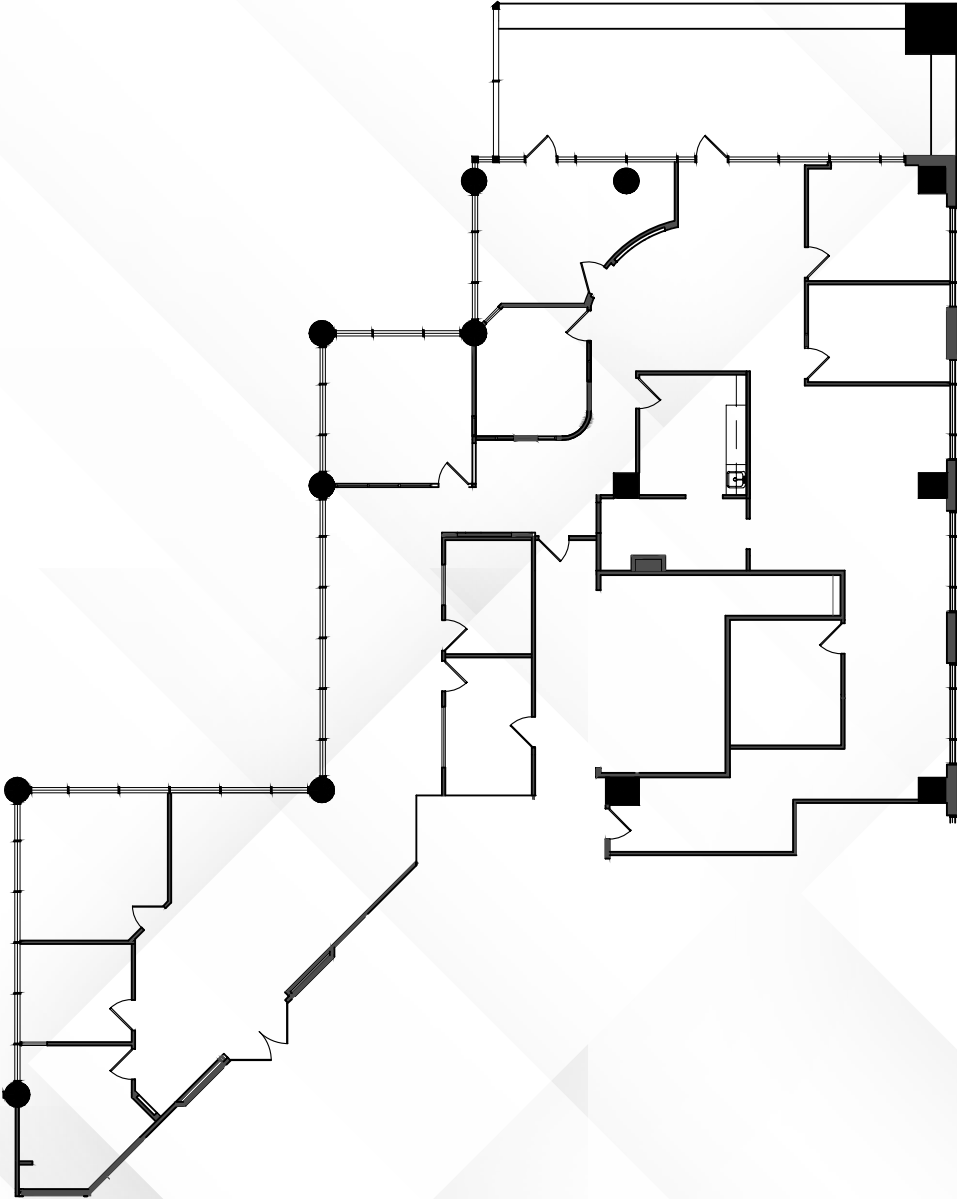
±3,159 SF



AVAILABILITIES

**19100 | Suite 200**

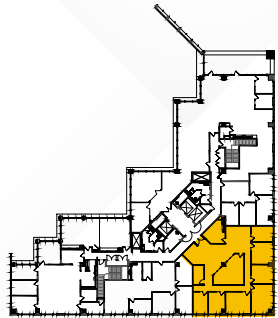
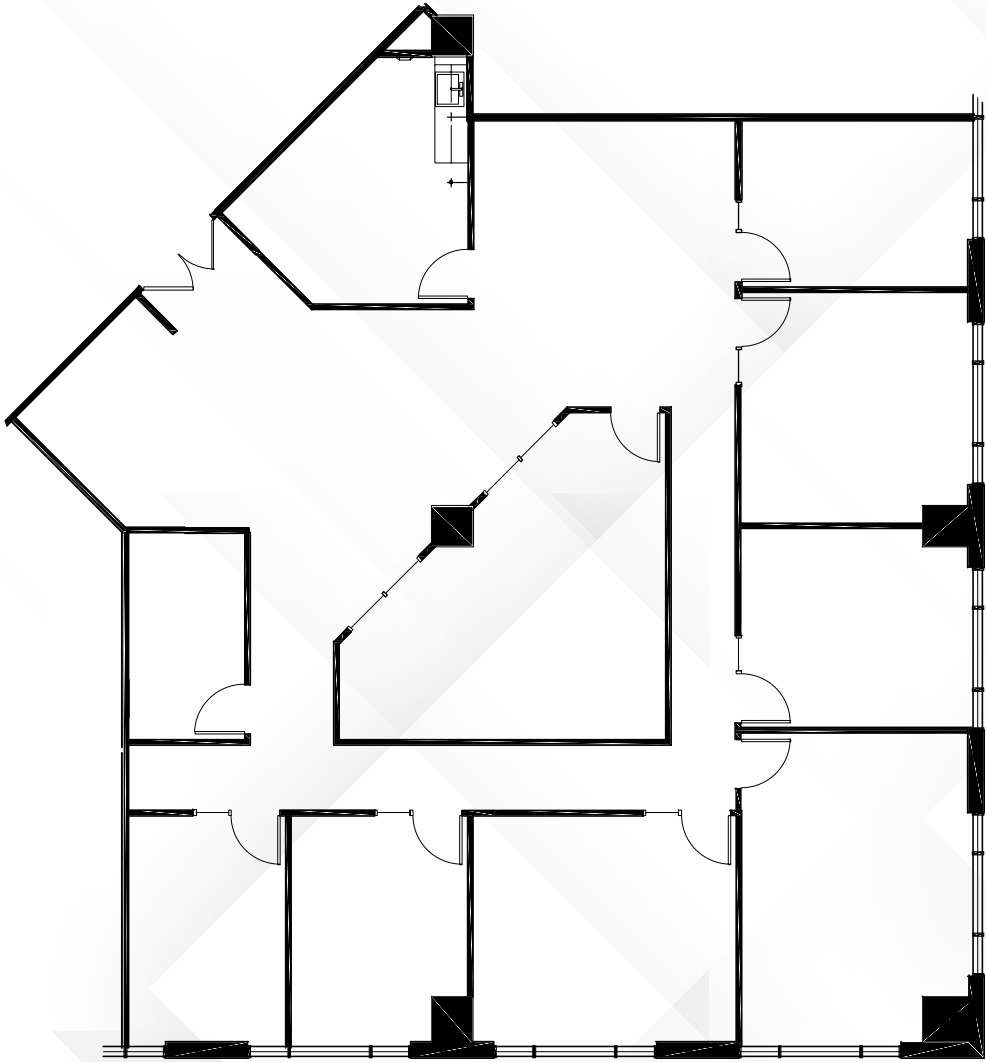
±5,957 SF



AVAILABILITIES

**19100 | Suite 250**

±3,713 SF

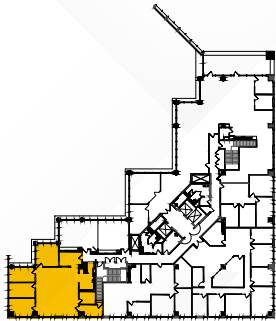
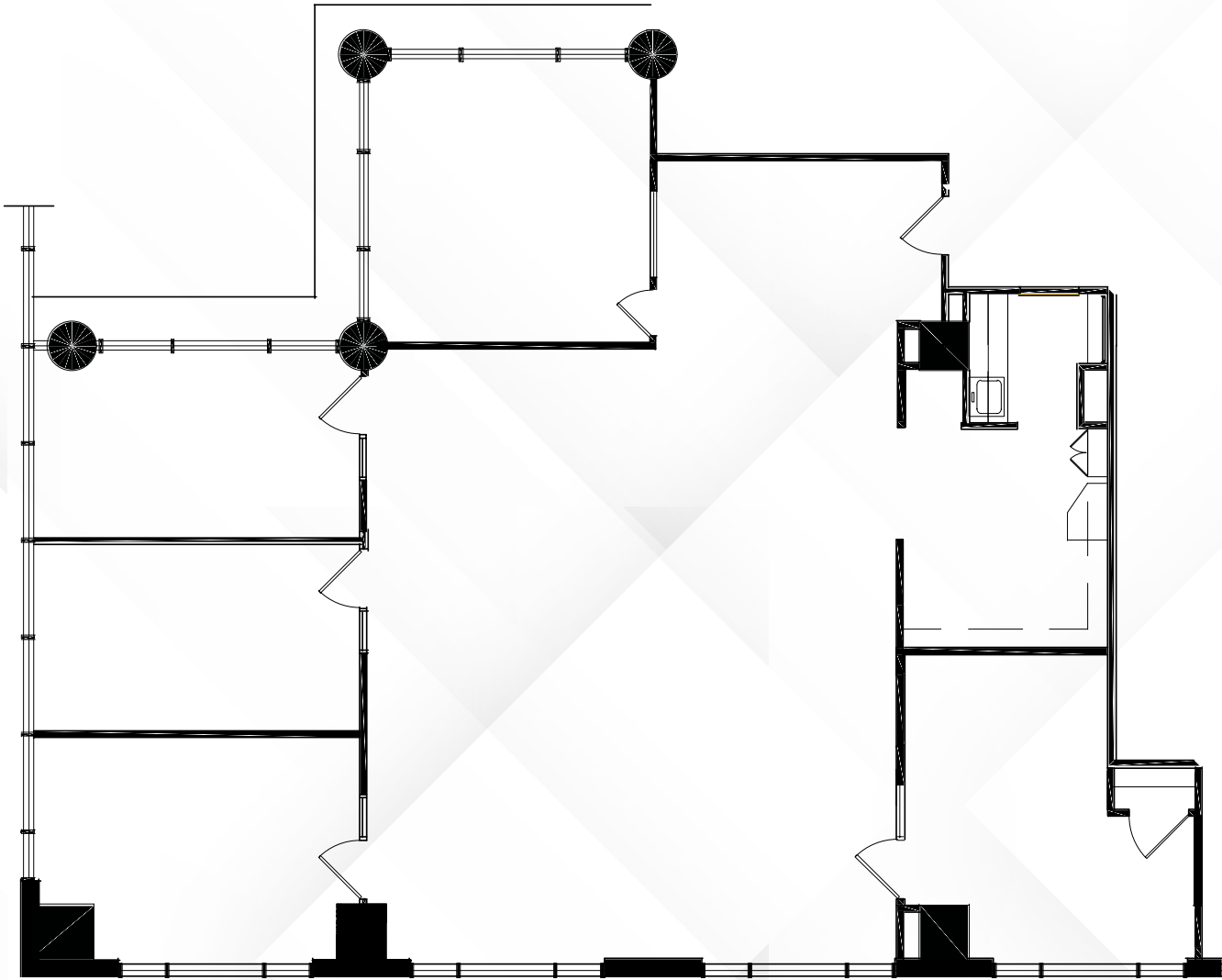


AVAILABILITIES

**19100 | Suite 280**

±2,864 SF

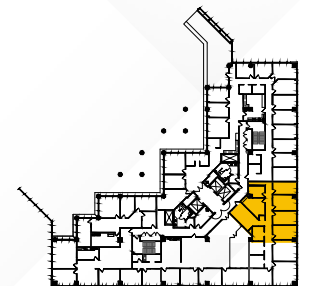
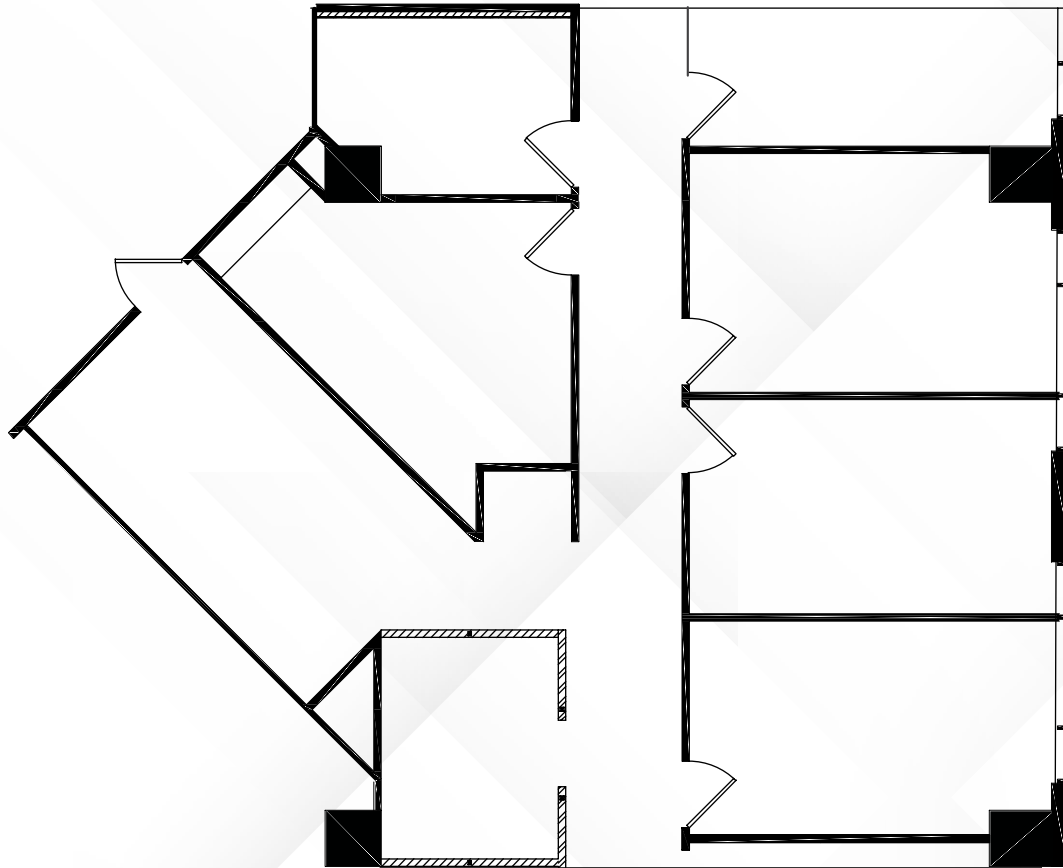
360°  
↻



# AVAILABILITIES

## 19100 | Suite 350

±2,065 SF

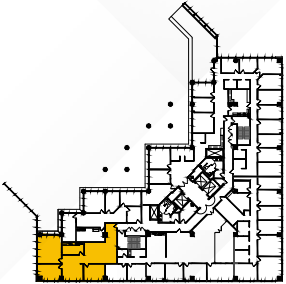
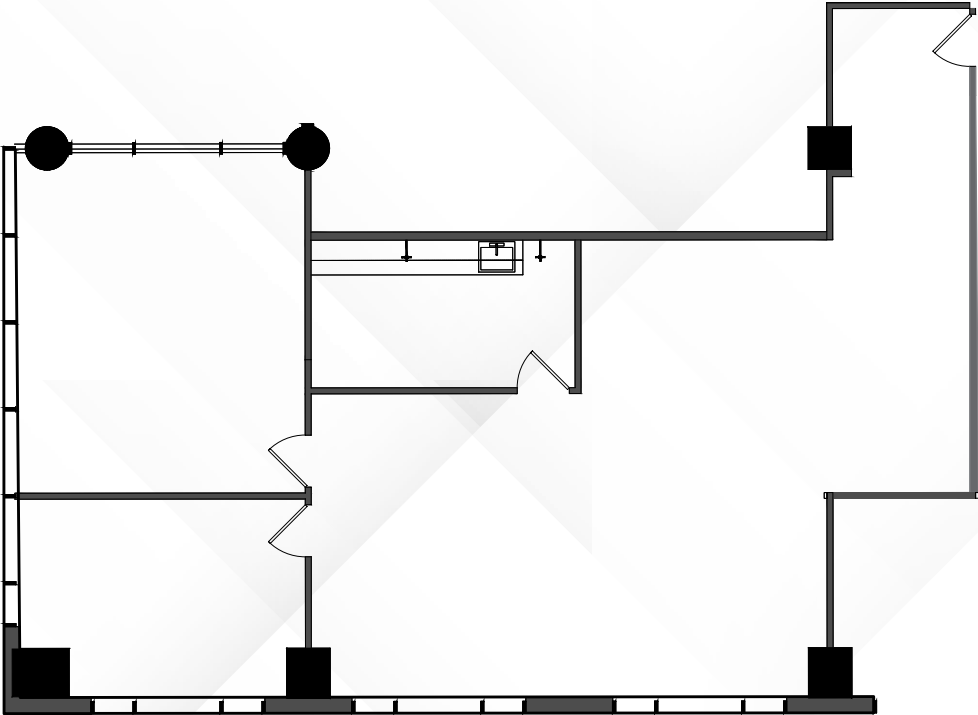


Overview

AVAILABILITIES

**19100 | Suite 370**

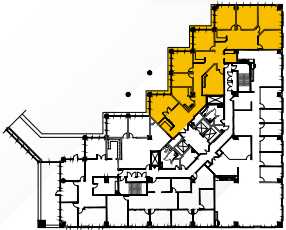
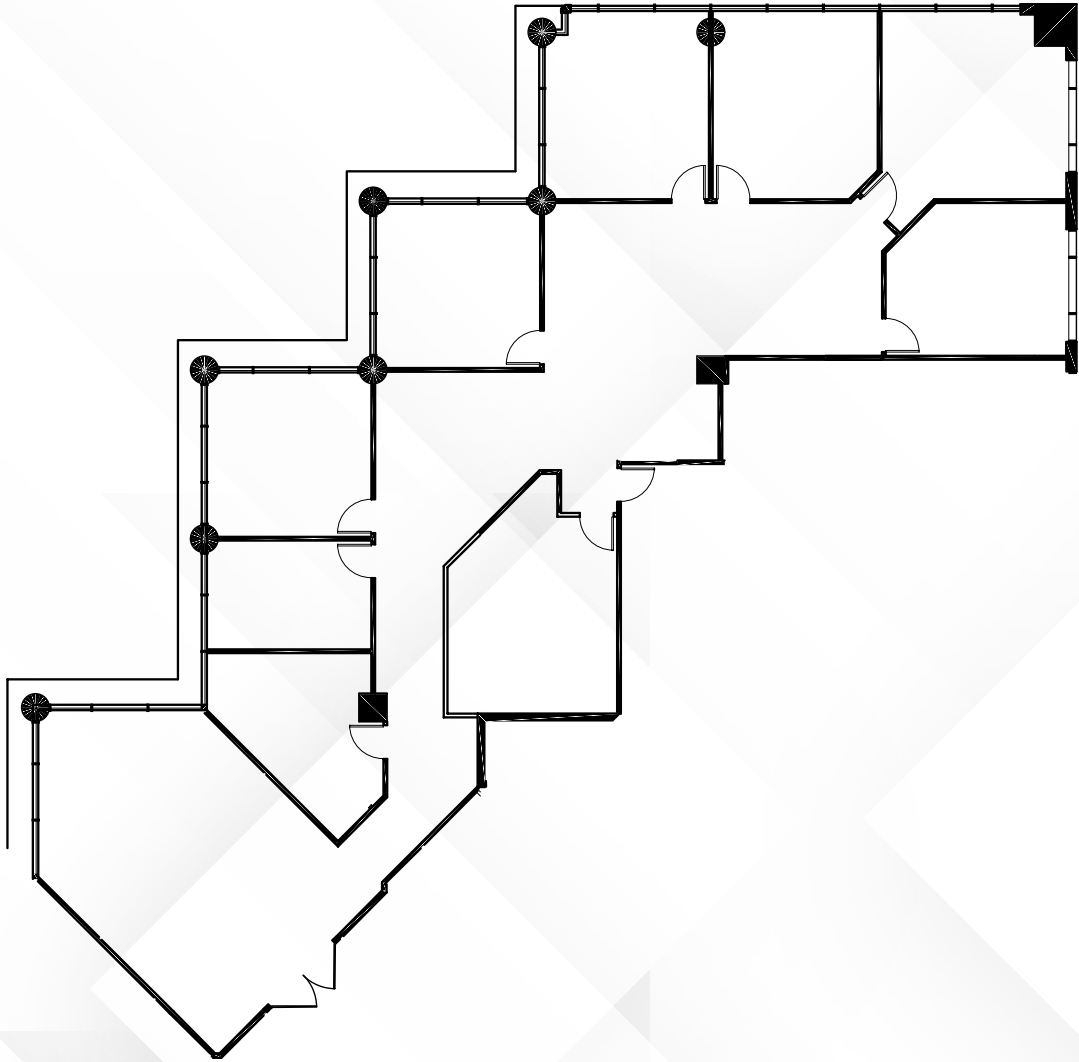
±2,025 SF



AVAILABILITIES

**19100 | Suite 400**

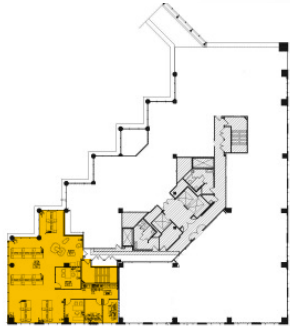
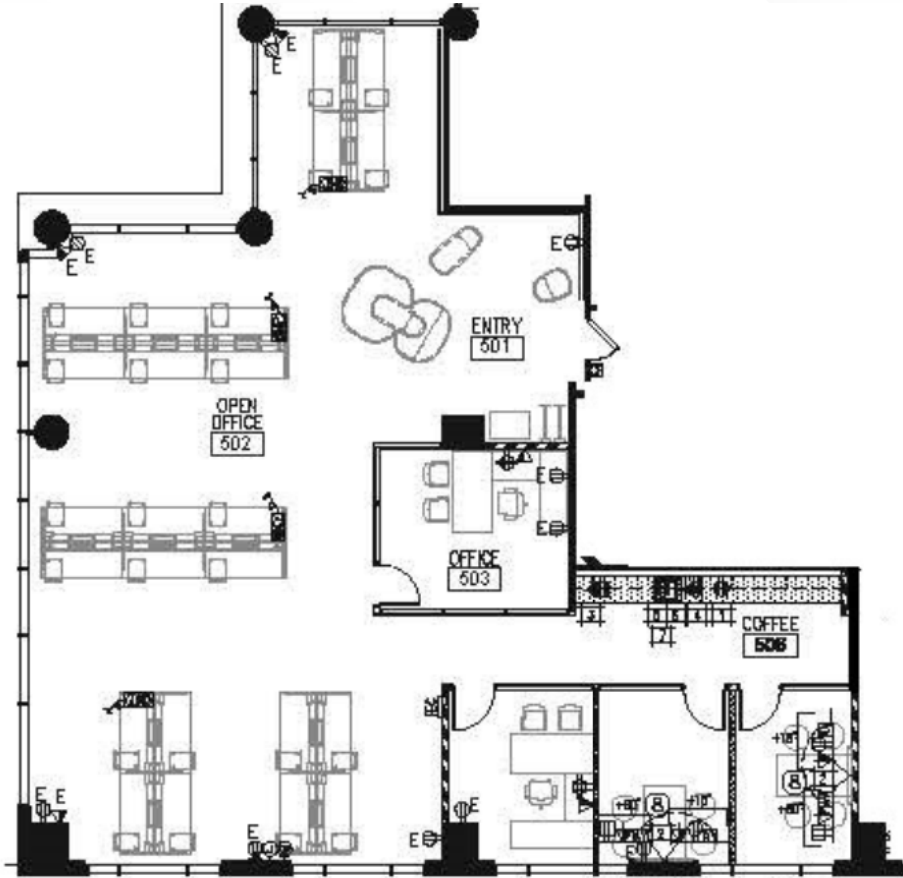
±4,591 SF



# AVAILABILITIES

## 19100 | Suite 570

±3,235 SF

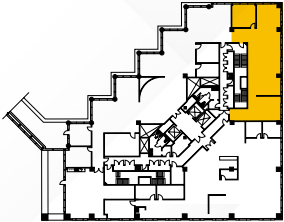
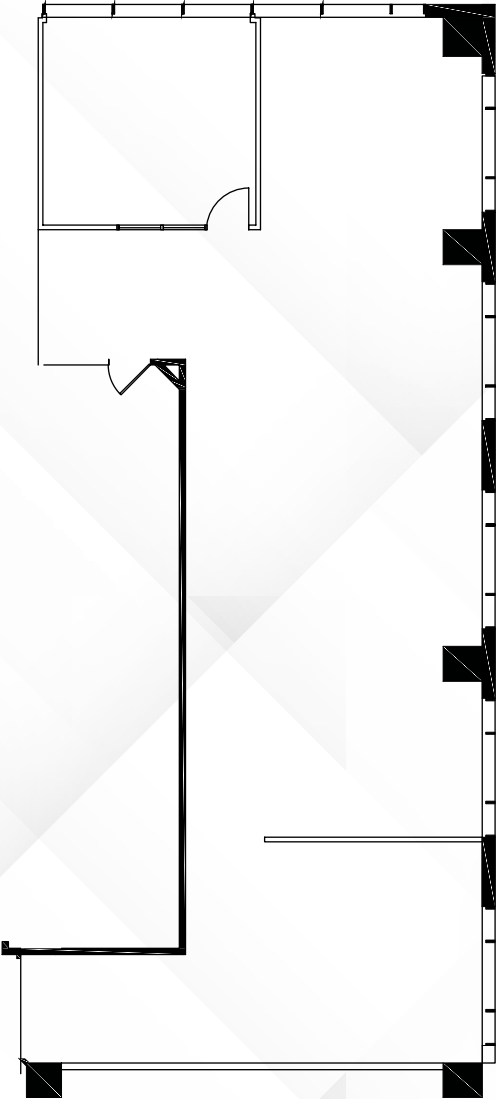


Overview

AVAILABILITIES

**19100 | Suite 610**

±2,533 SF

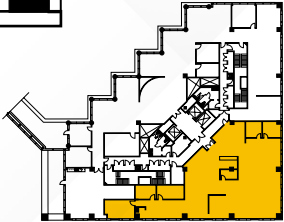
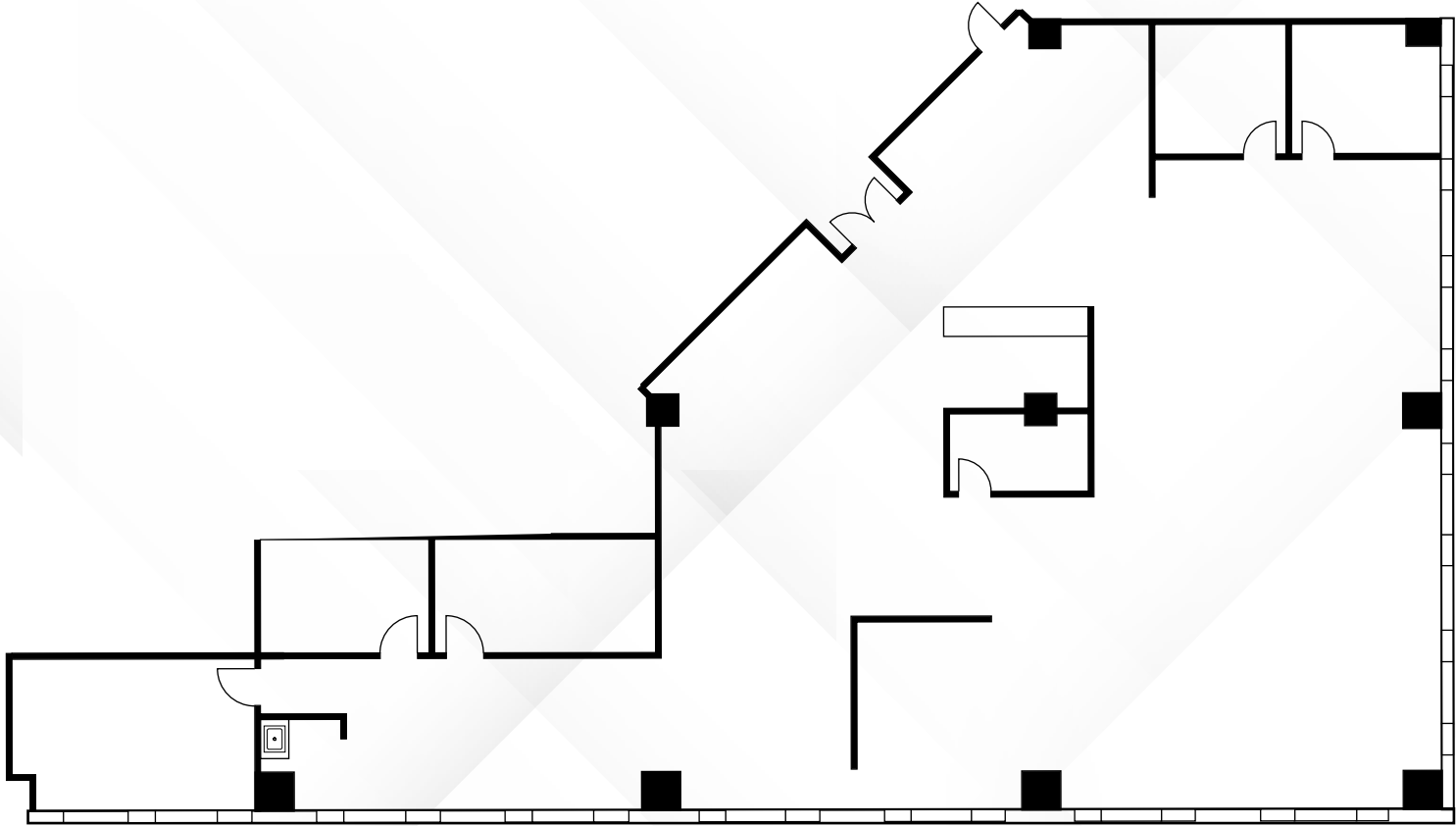


Overview

AVAILABILITIES

**19100 | Suite 650**

±5,728 SF

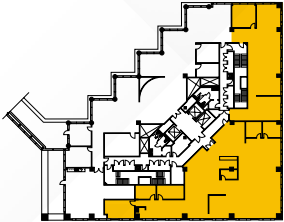
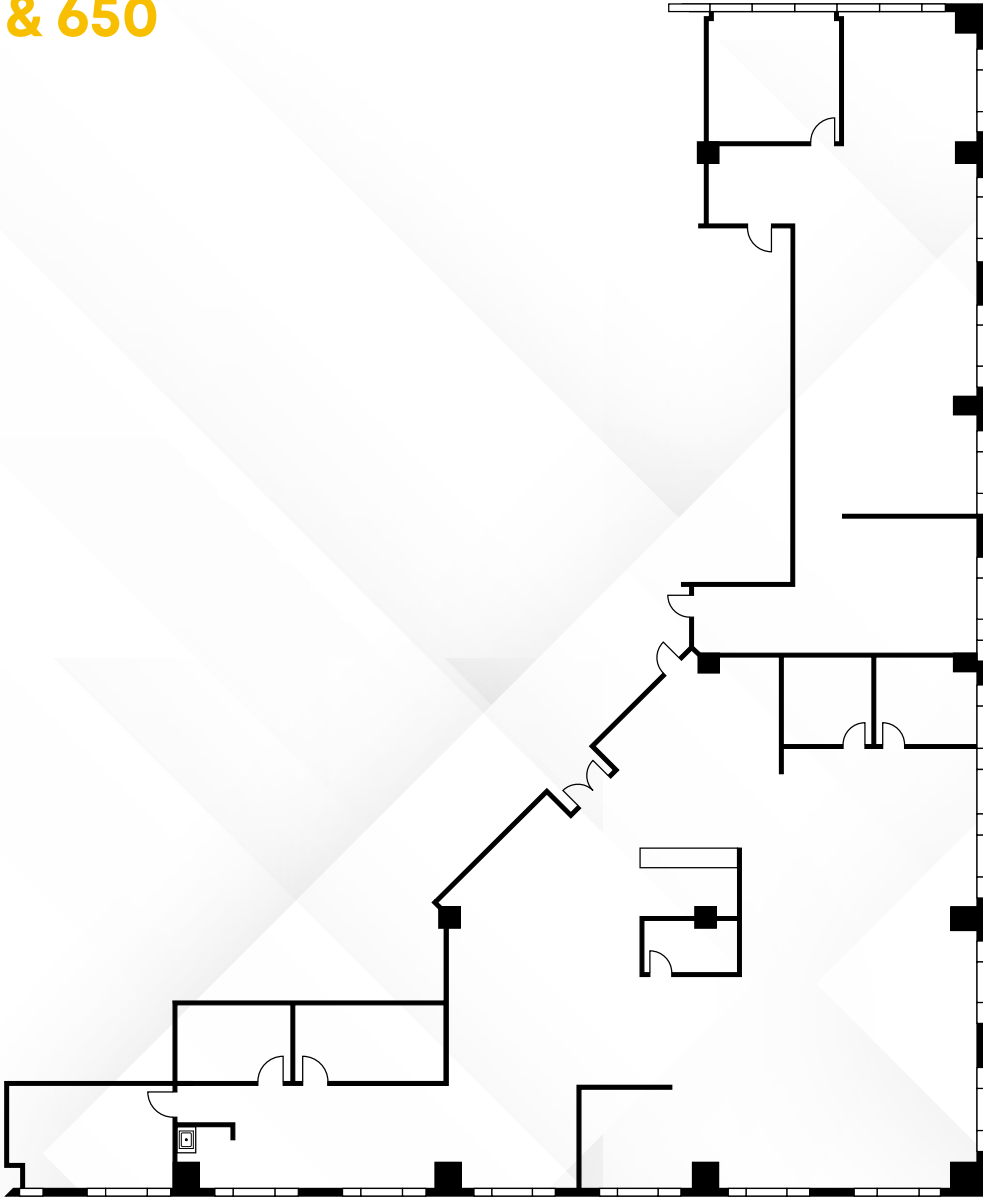


Overview

AVAILABILITIES

**19100 | Suite 610 & 650**

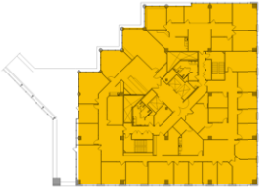
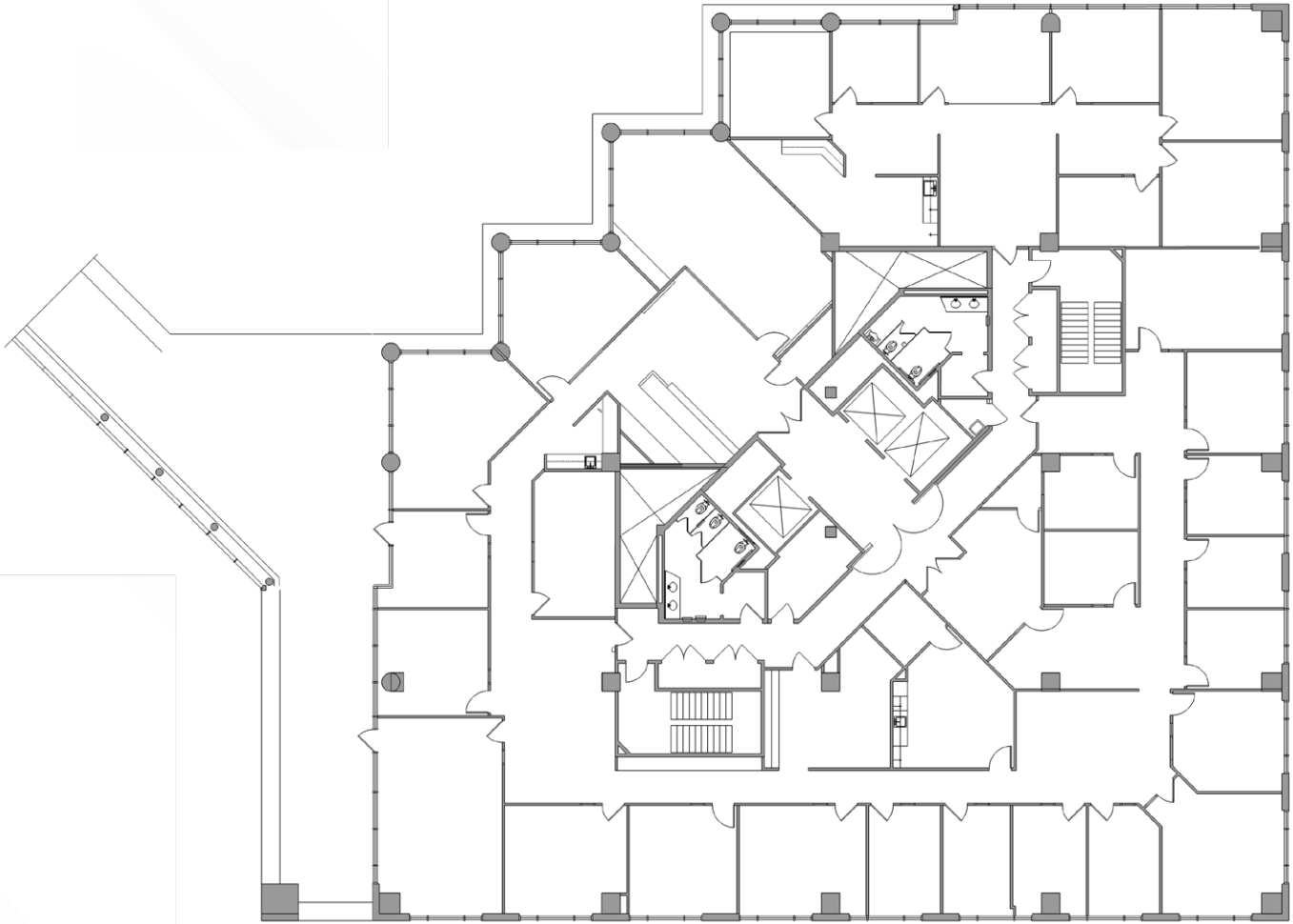
±8,261 SF



AVAILABILITIES

**19100 | Suite 800**

±15,476 SF

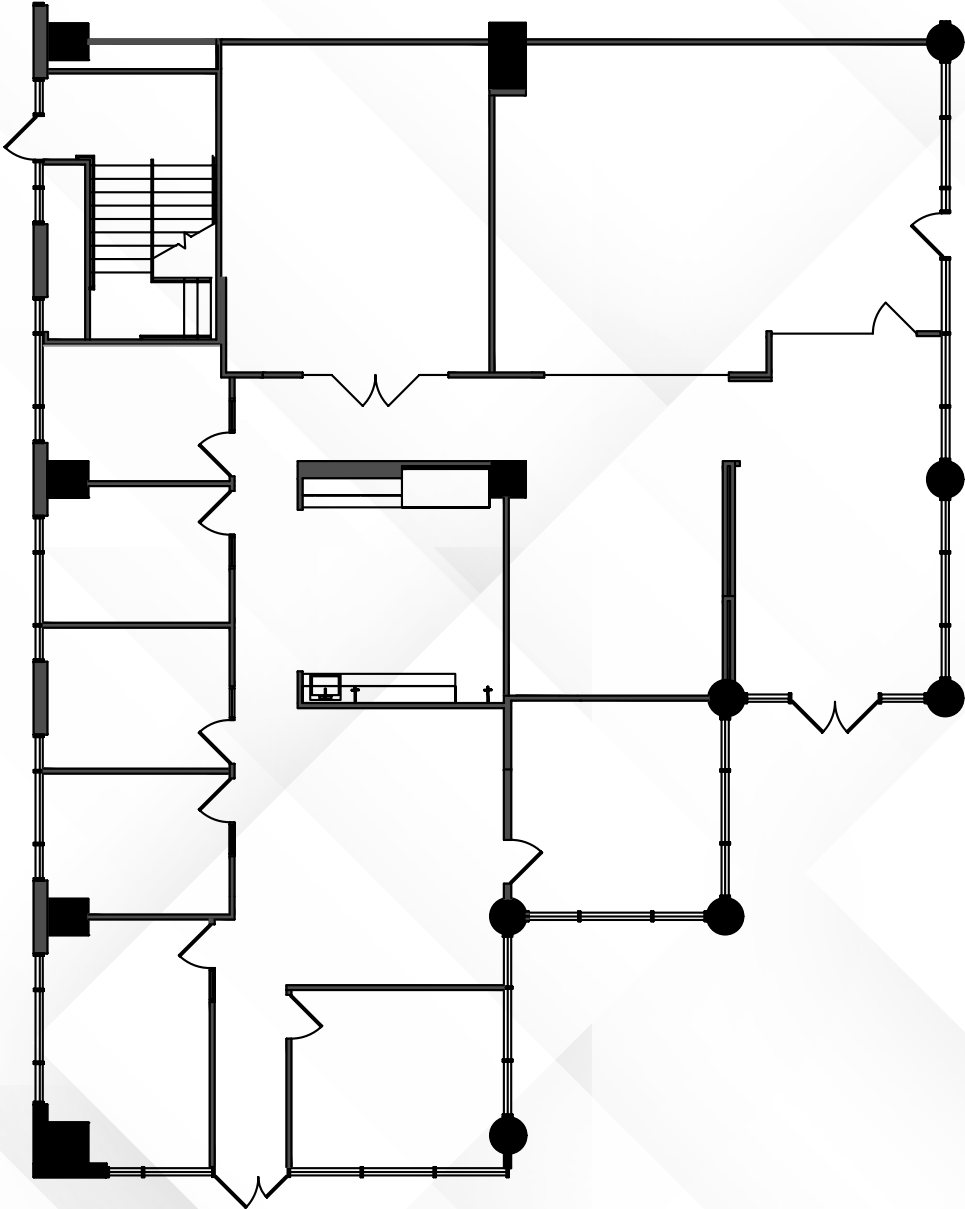


Overview

AVAILABILITIES

**19200 | Suite 100**

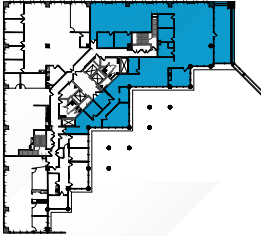
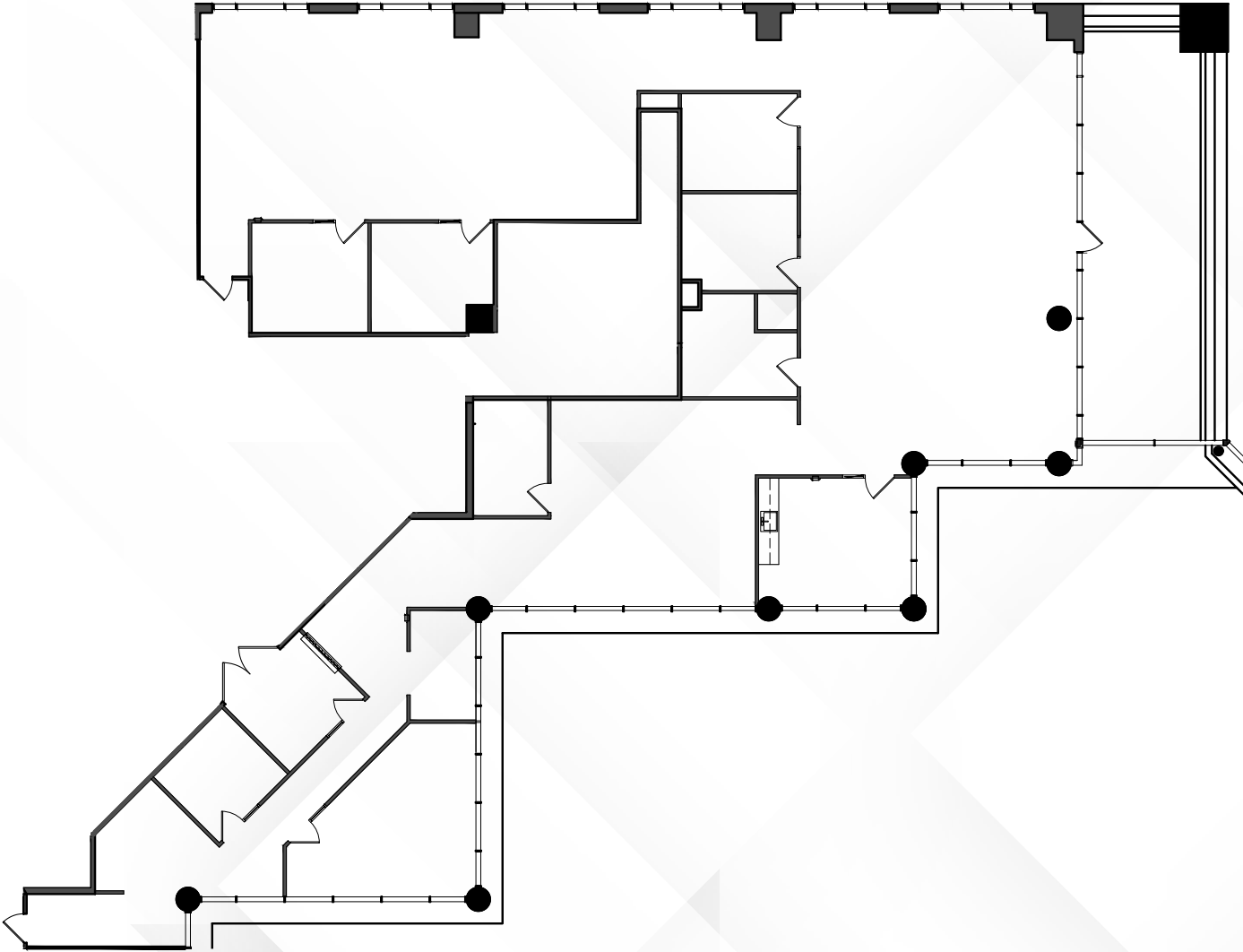
±4,722 SF



AVAILABILITIES

**19200 | Suite 200**

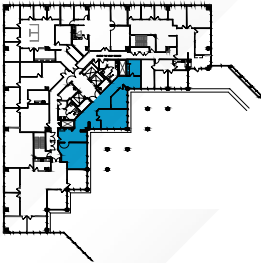
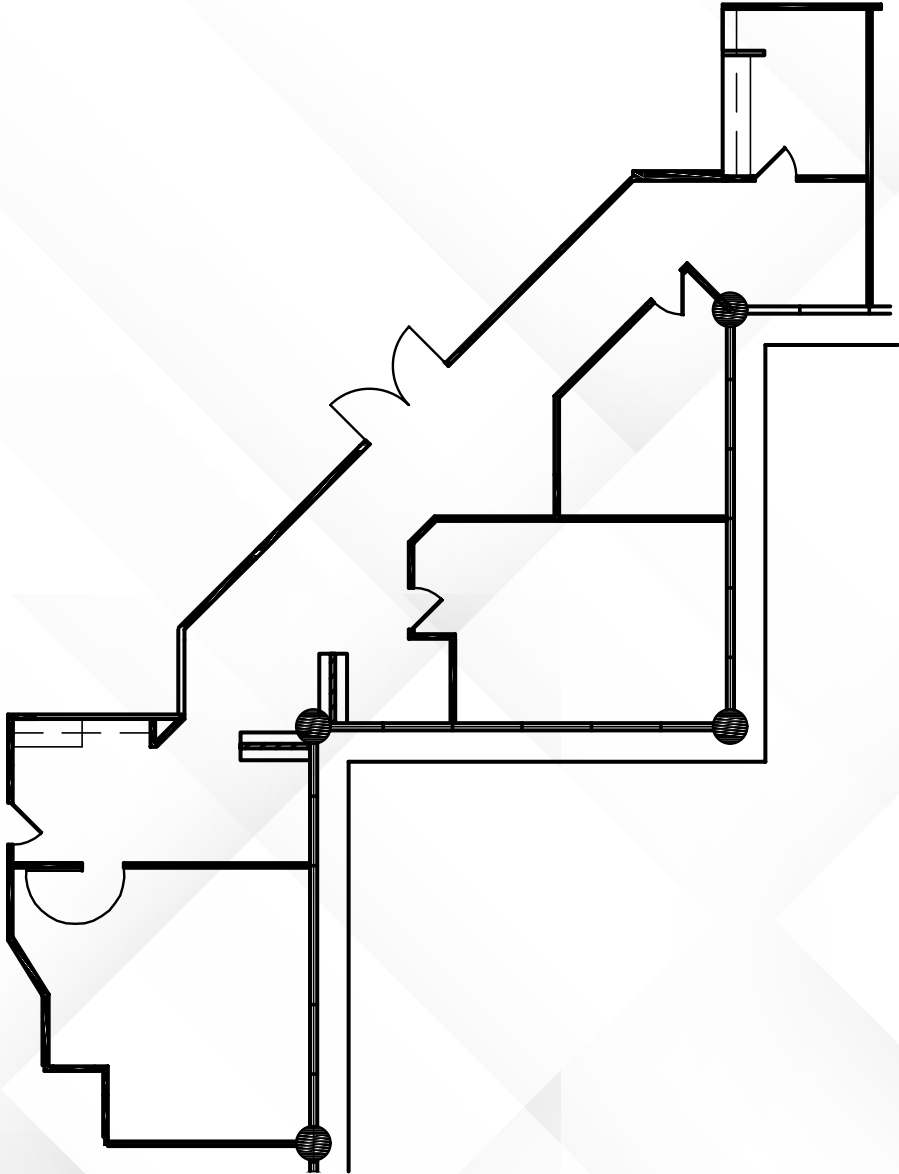
±7,183 SF



AVAILABILITIES

**19200 | Suite 300**

±2,267 SF

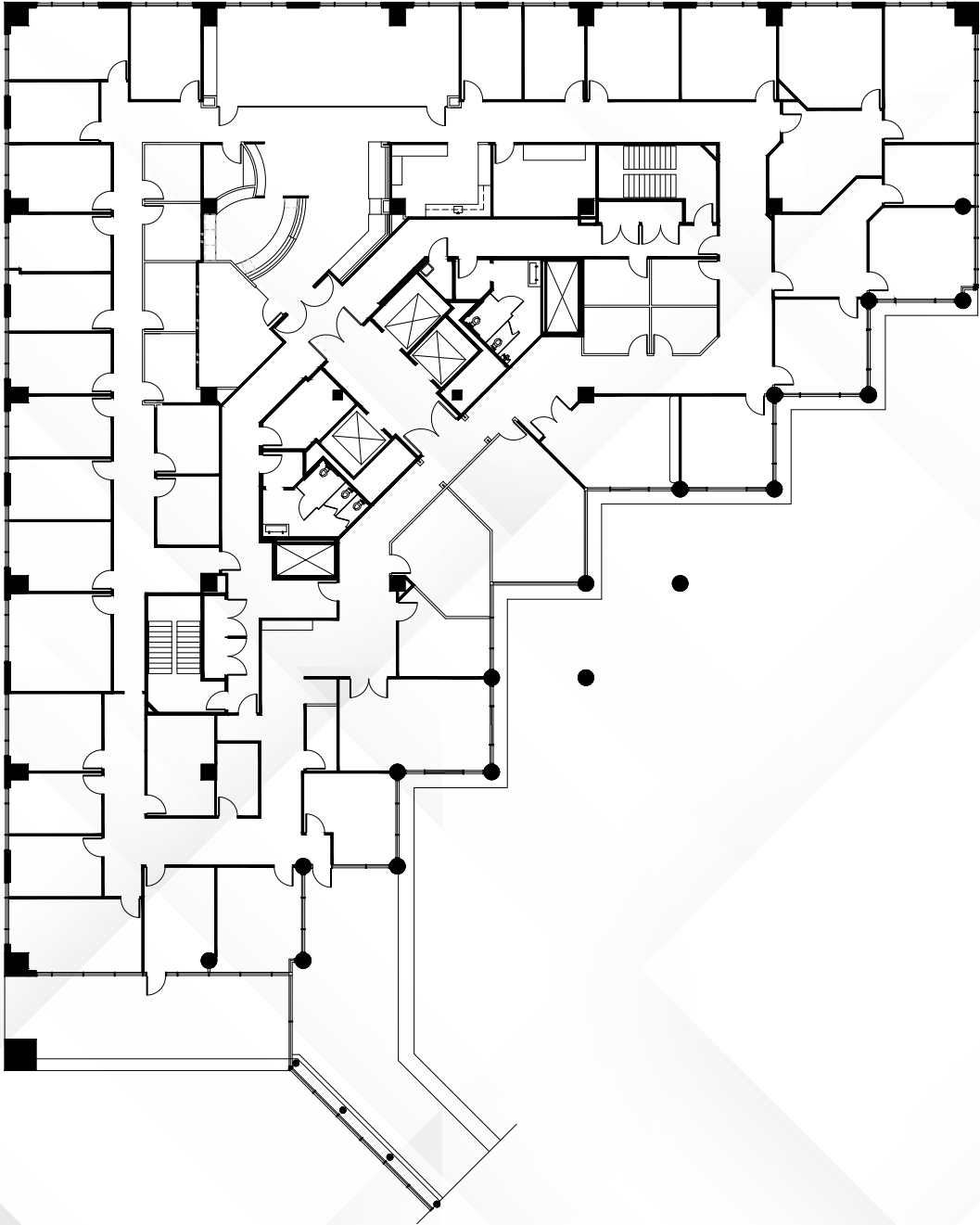


Overview

AVAILABILITIES

**19200 | 4th Floor**

±18,838 SF

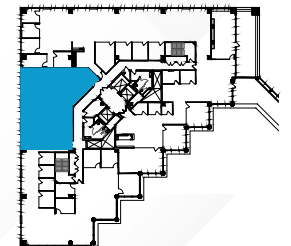
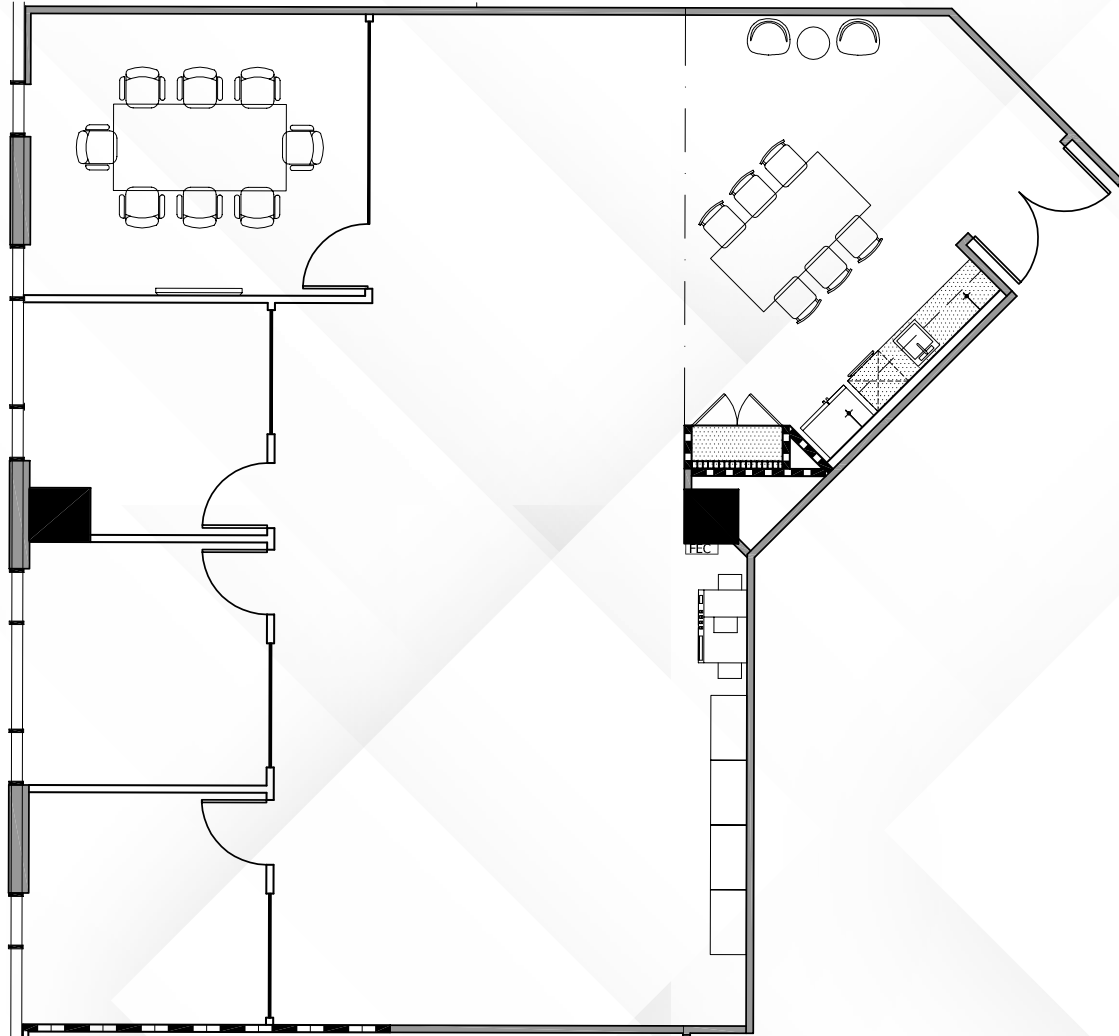


Overview

# AVAILABILITIES

## 19200 | Suite 500

Hypothetical Spec Suite | 2,348 RSF

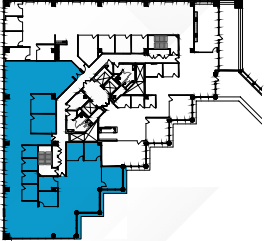
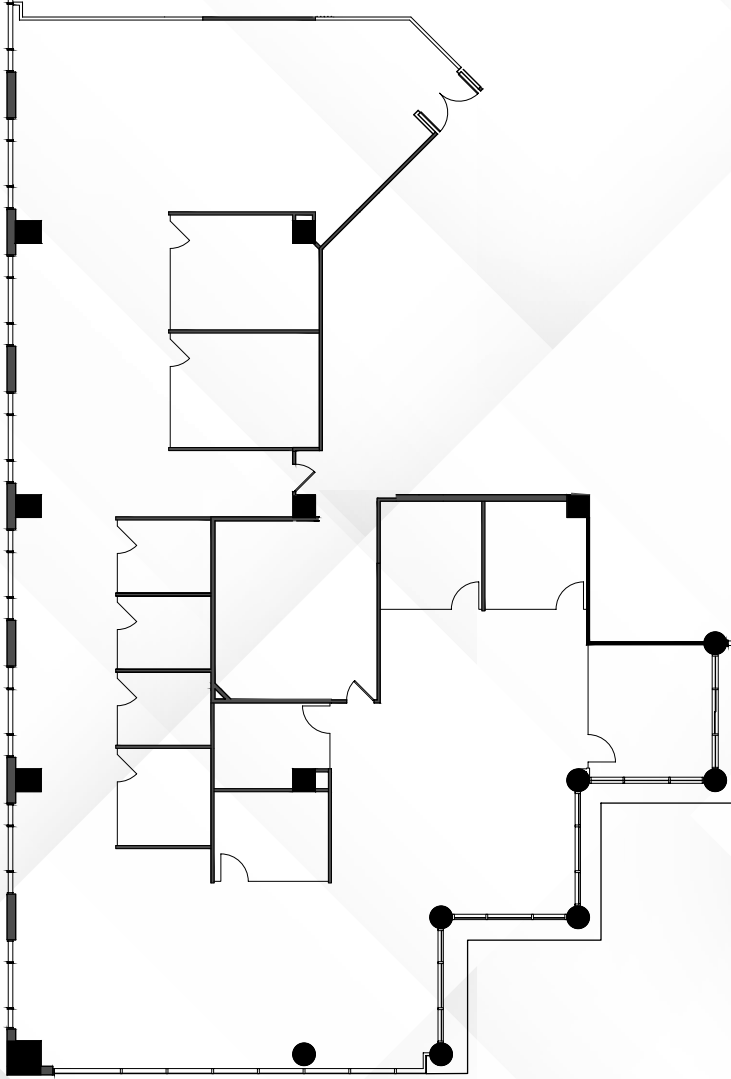


Overview

AVAILABILITIES

**19200 | Suite 510**

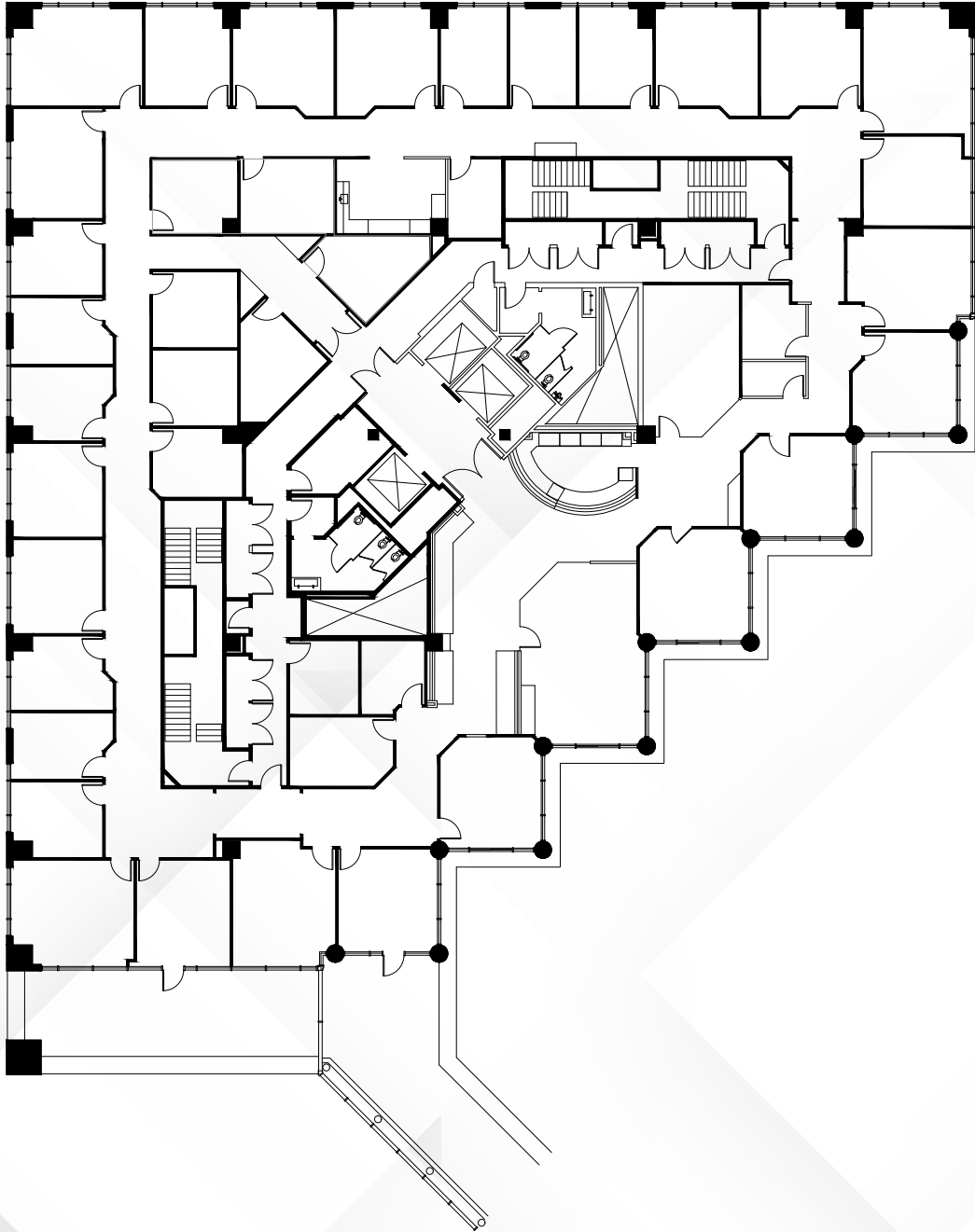
±7,454 SF



# AVAILABILITIES

## 19200 | 6th Floor

±16,621 SF

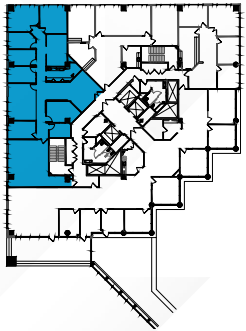
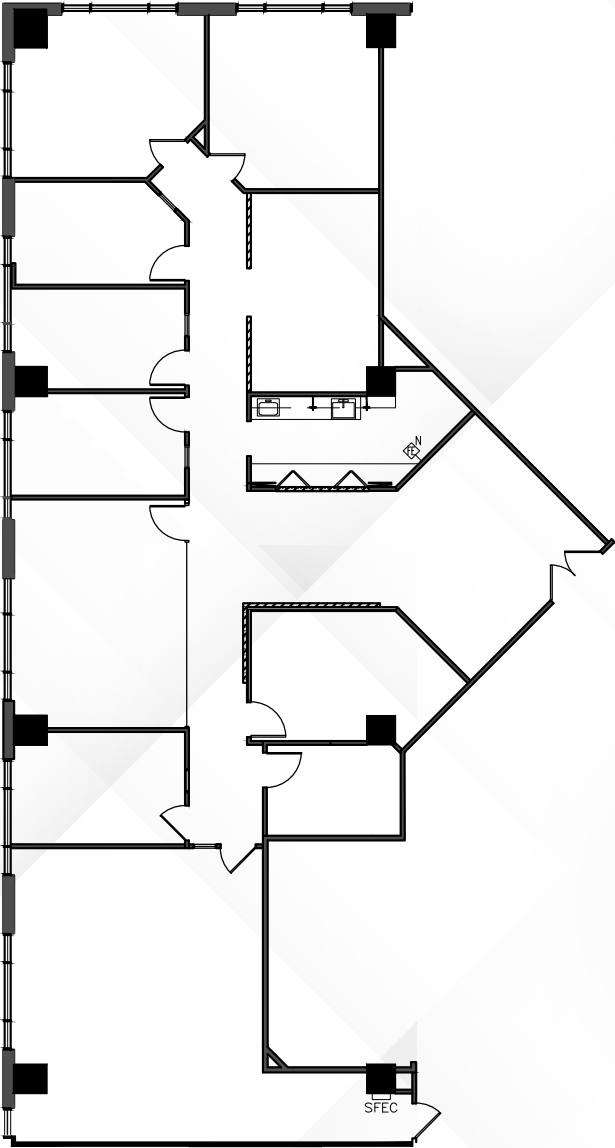


Overview

AVAILABILITIES

**19200 | Suite 850**

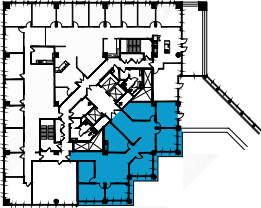
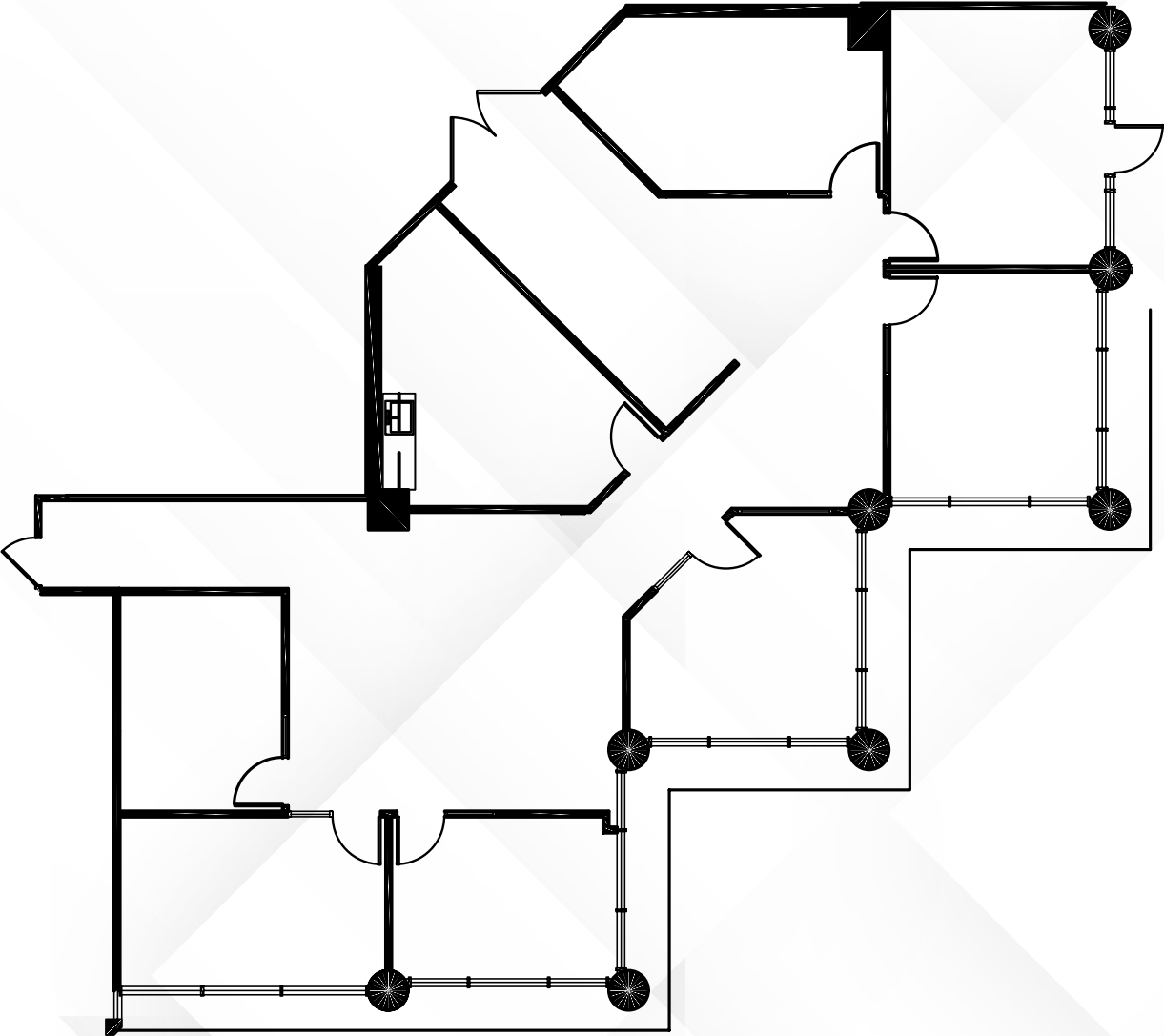
±4,185 SF



AVAILABILITIES

**19200 | Suite 900**

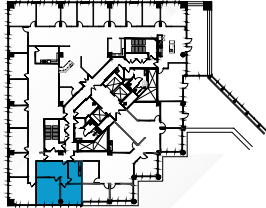
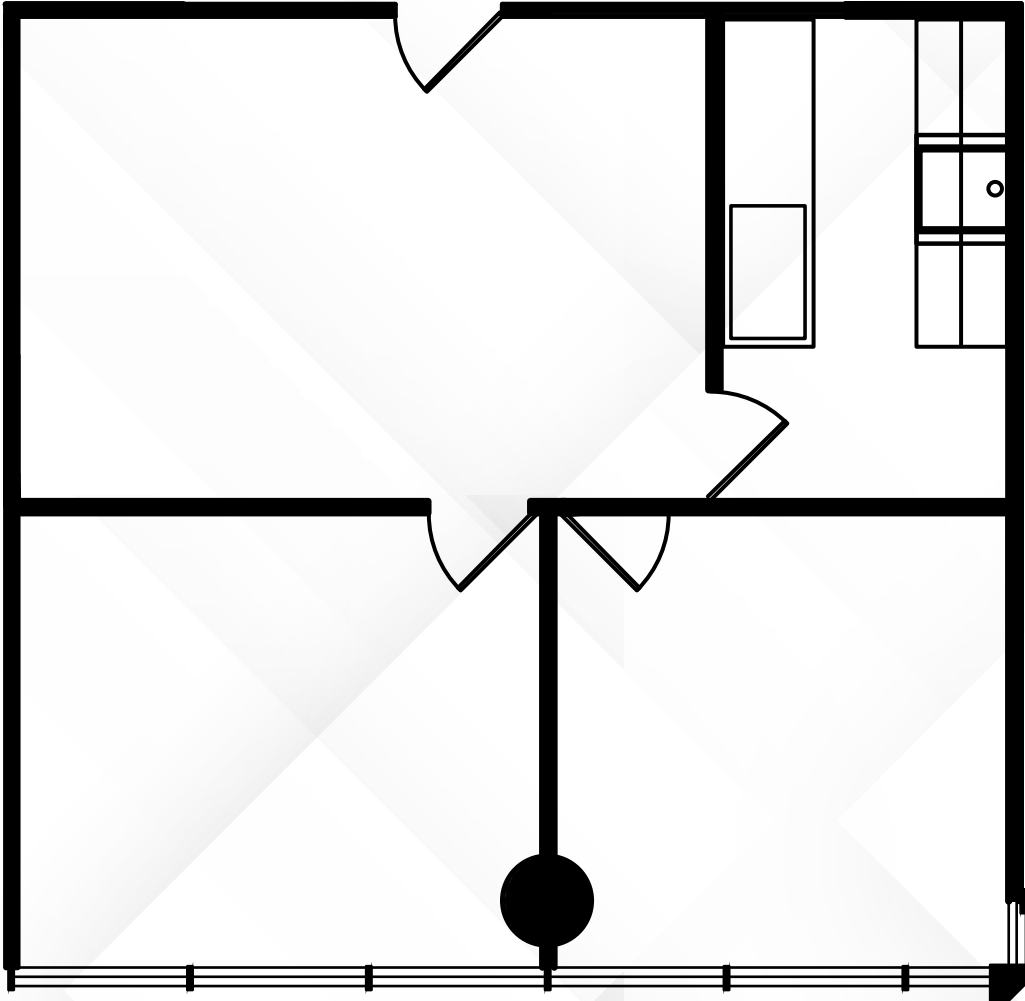
±3,652 SF



AVAILABILITIES

**19200 | Suite 920**

±943 SF

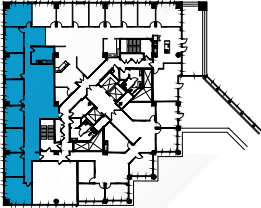
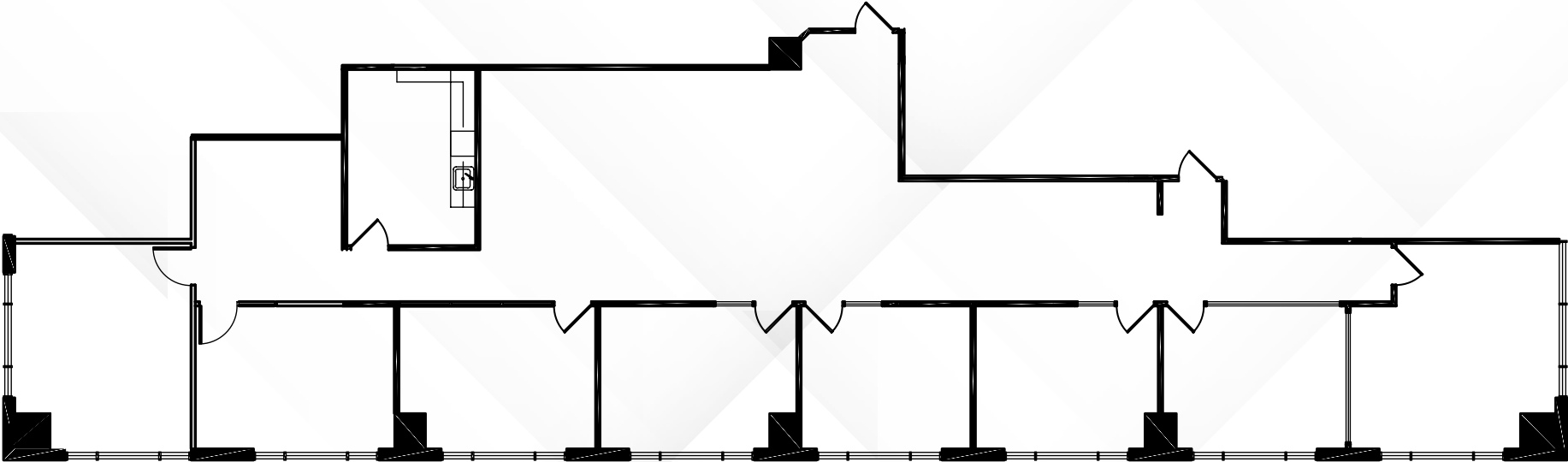


Overview

AVAILABILITIES

**19200 | Suite 940**

±3,681 SF

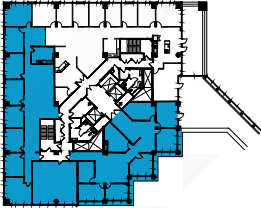
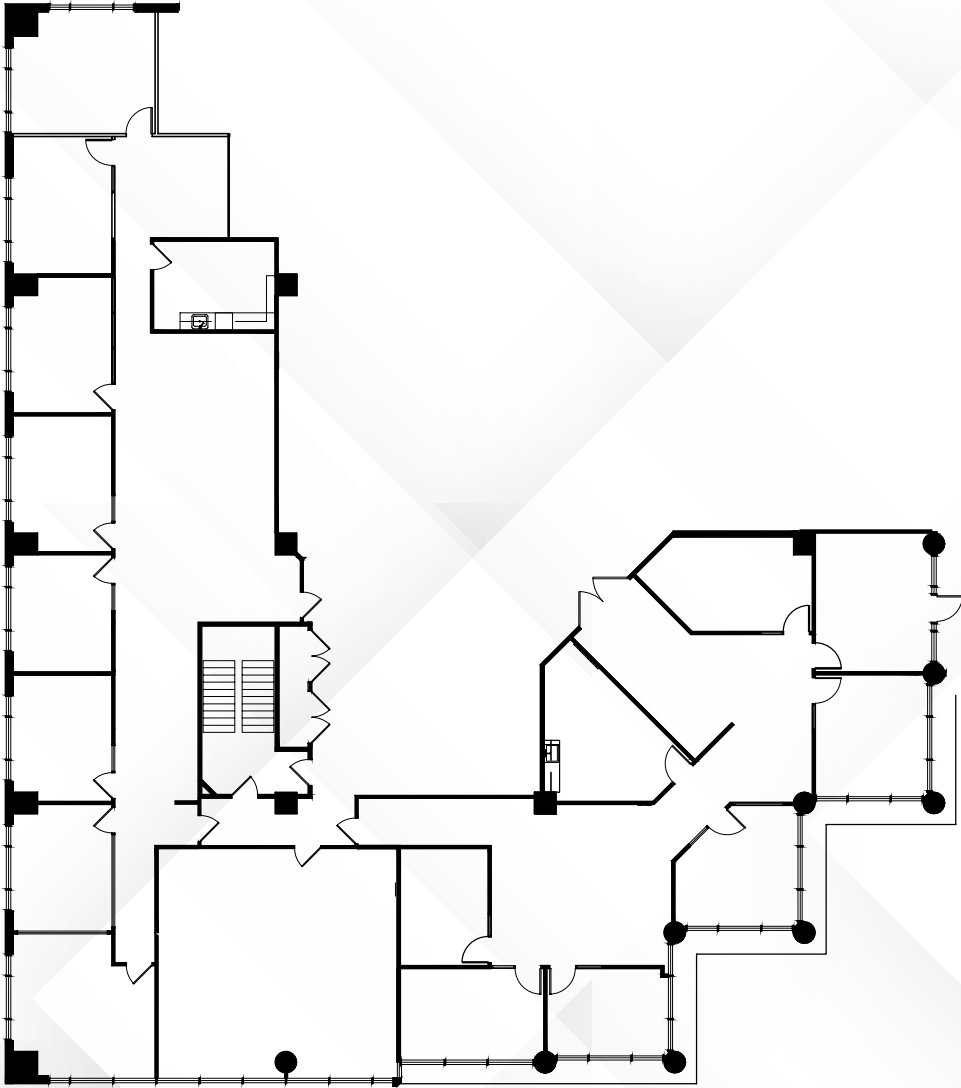


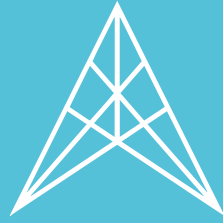
Overview

AVAILABILITIES

**19200 | Suite 900, 920, & 940**

±8,286 SF





— THE —  
**ATRIUM**

19100 & 19200 VON KARMAN, IRVINE CA



For leasing information, please contact us:

**PETER JOYCE | 949.203.3035**  
peter.joyce@streamrealty.com  
Lic.02001428

**MIKE ADAMS | 949.203.3033**  
madams@streamrealty.com  
Lic. 01875266

Copyright © 2026 Stream Realty Partners. All rights reserved. The information contained herein was obtained from sources believed reliable; however, Stream Realty Partners, L.P. make no guarantees, warranties or representations as to the completeness or accuracy thereof. The presentation of this property is submitted subject to errors, change of price, or conditions, prior sale or lease, or withdrawal without notice. Rev. 05.21.26