

3001 19TH STREET

FOR LEASE | BEAUTIFUL BRICK & TIMBER OFFICE SPACE

TCP
TOUCHSTONE
COMMERCIAL PARTNERS



WWW.TCPRE.COM

ZACH HAUPERT zhaupert@tcpre.com
D 415.539.1121 | C 415.812.1219

MICHAEL SANBERG msanberg@tcpre.com
D 415.539.1103 | C 415.697.6088

3001 19TH STREET

PROPERTY SUMMARY // SUITE 200

ADDRESS

3001 19th Street, Suite 200
San Francisco, CA 94107

AVAILABLE SPACE

+/- 6,000 Square Feet

RENTAL RATE

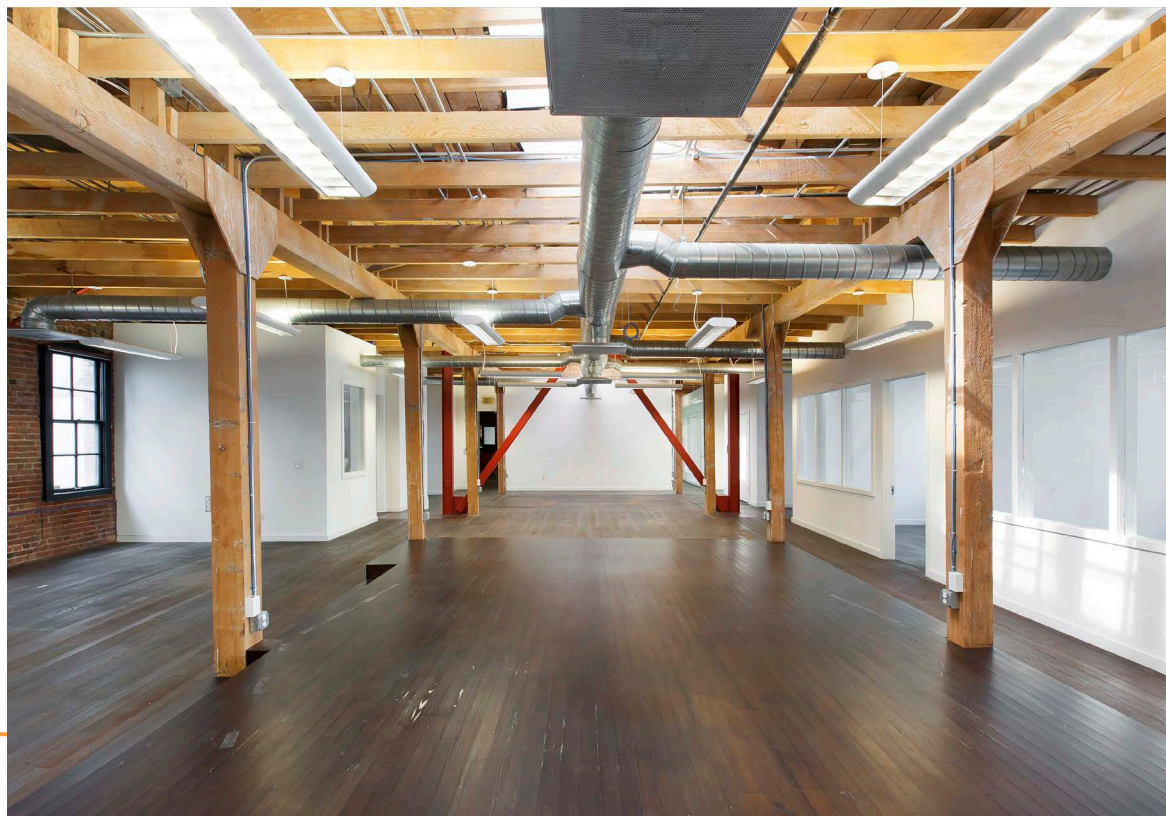
\$48 / Square Foot / Year, Industrial Gross

AVAILABLE

Immediately

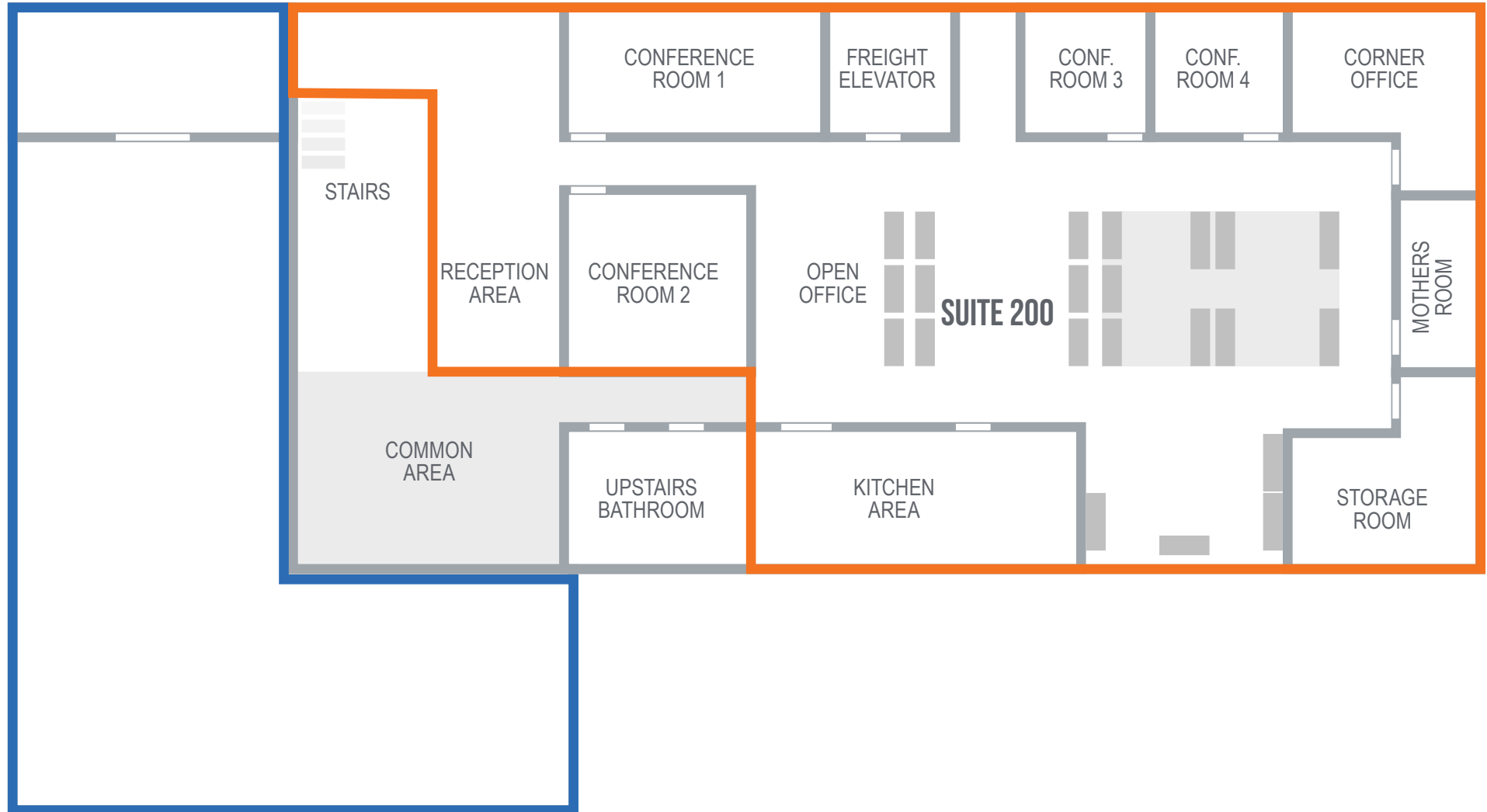
SUITE 200 ATTRIBUTES

- + Five (5) Offices / Conference Rooms & Mother's Room
- + Large Bullpen / Open Seating Area
- + Skylights w/ Good Natural Light
- + Newly Renovated Kitchenette
- + Hardwood Floors Throughout
- + HVAC Throughout
- + Fully Sprinklered
- + Freight Elevator

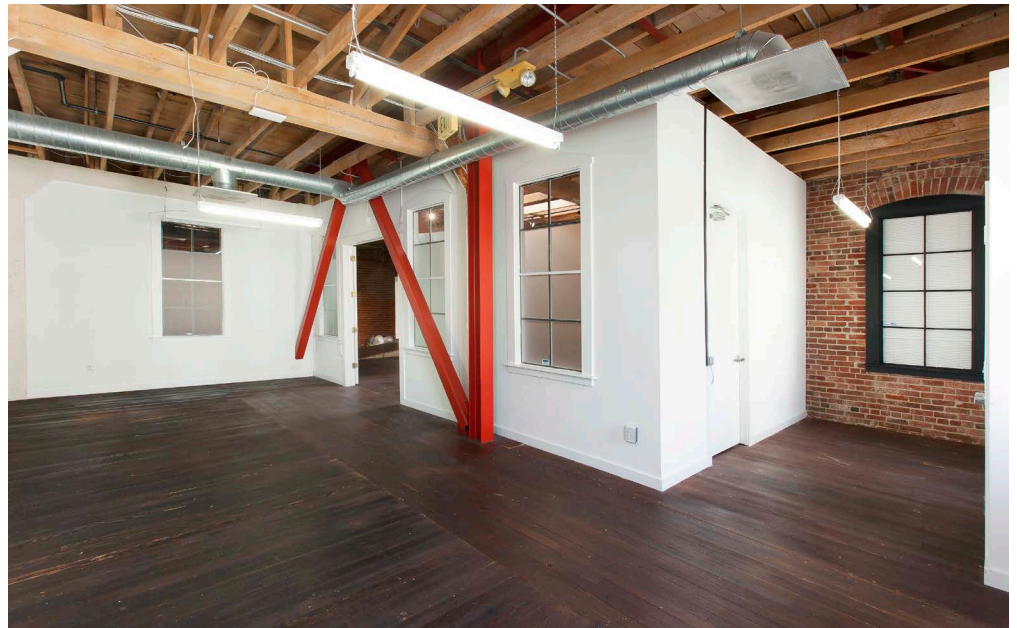
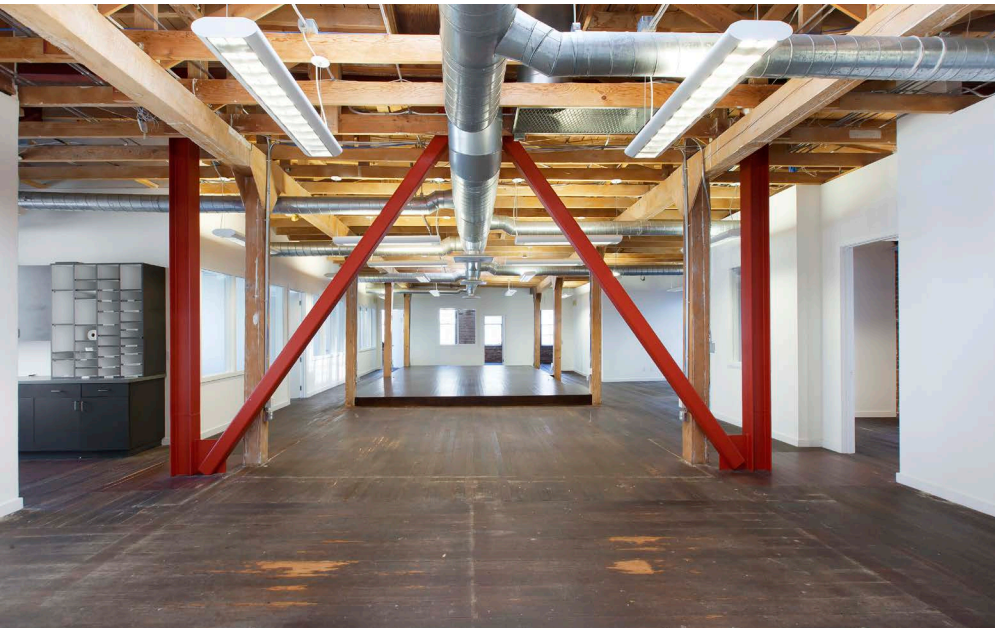
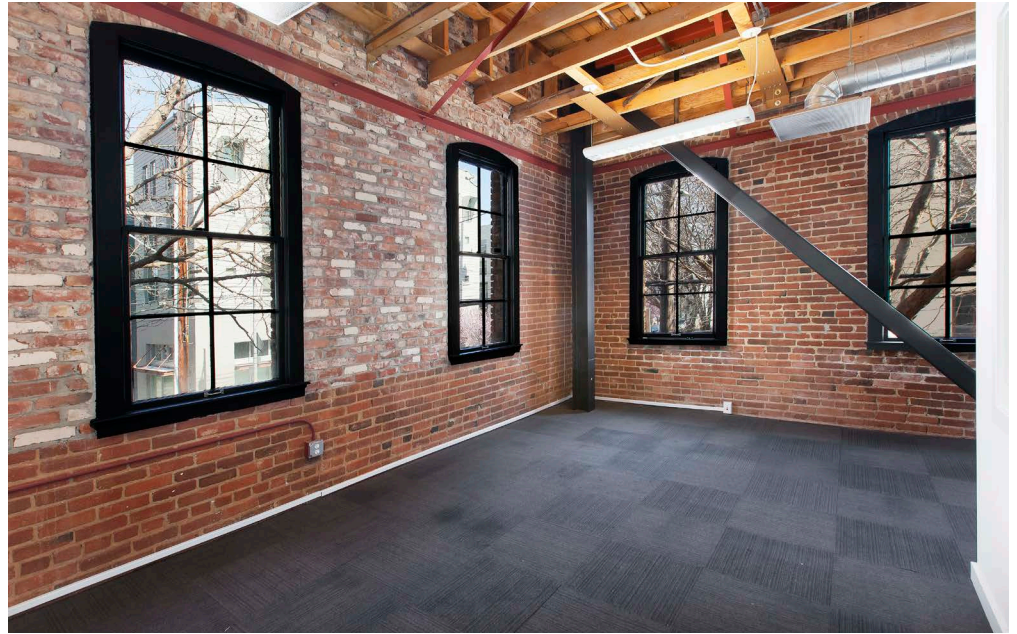
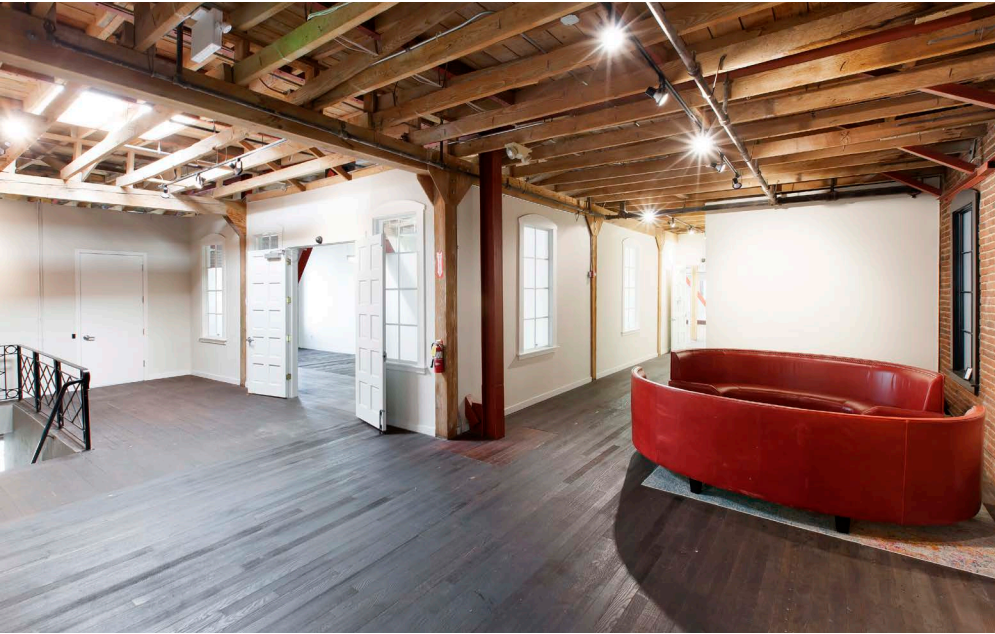


FLOOR PLANS

Suite 200 +/- 6,000 Square Feet



3001 19TH STREET



3001 19TH STREET

LOCATION OVERVIEW

Desirable Inner Mission District location, walkable to many nearby, popular amenities and to surrounding neighborhoods.



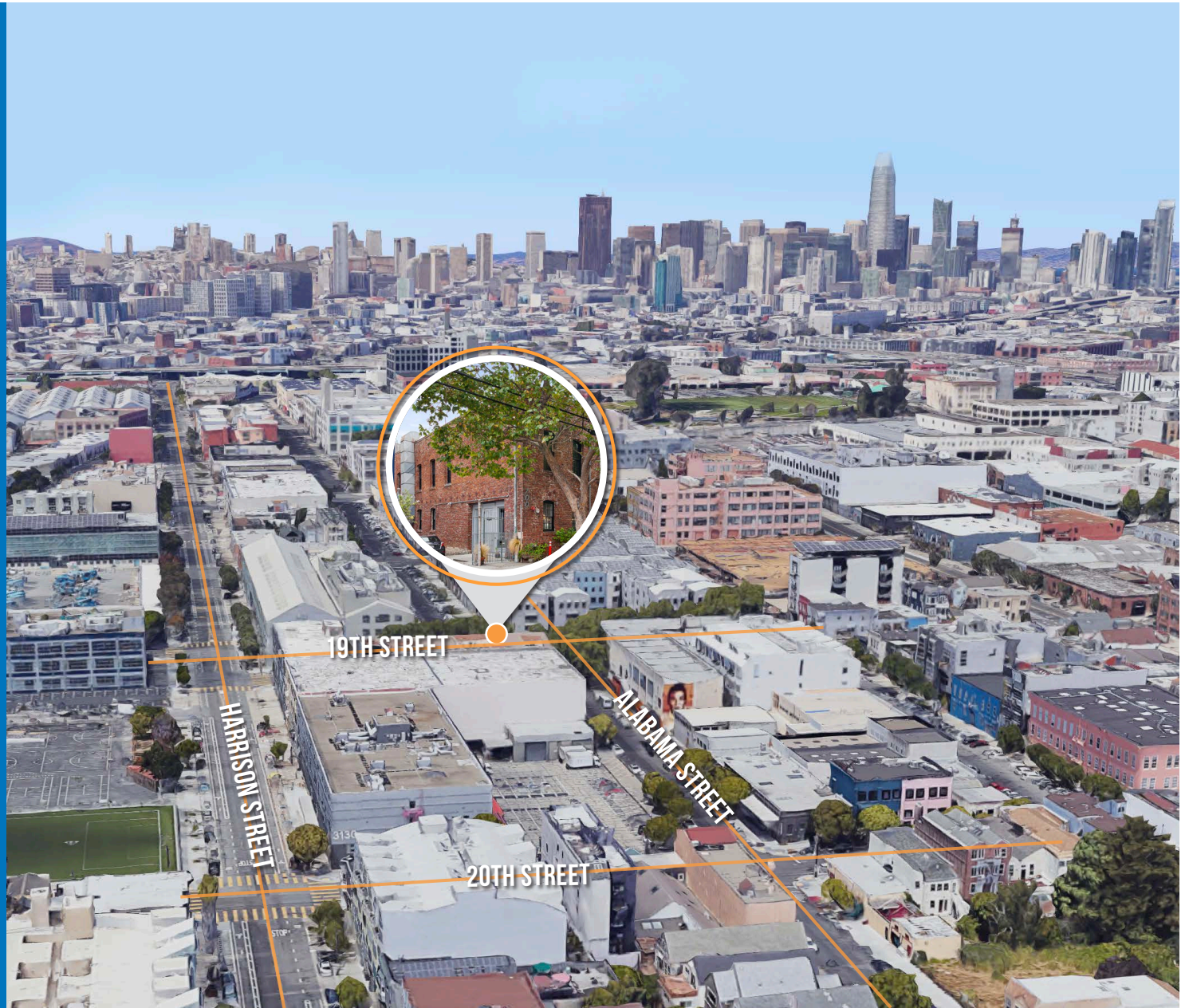
11 MIN to Potrero Hill
13 MIN to Design District
14 MIN to 16th St. BART



07 MIN to SOMA
16 MIN to Union Square
20 MIN to Financial District



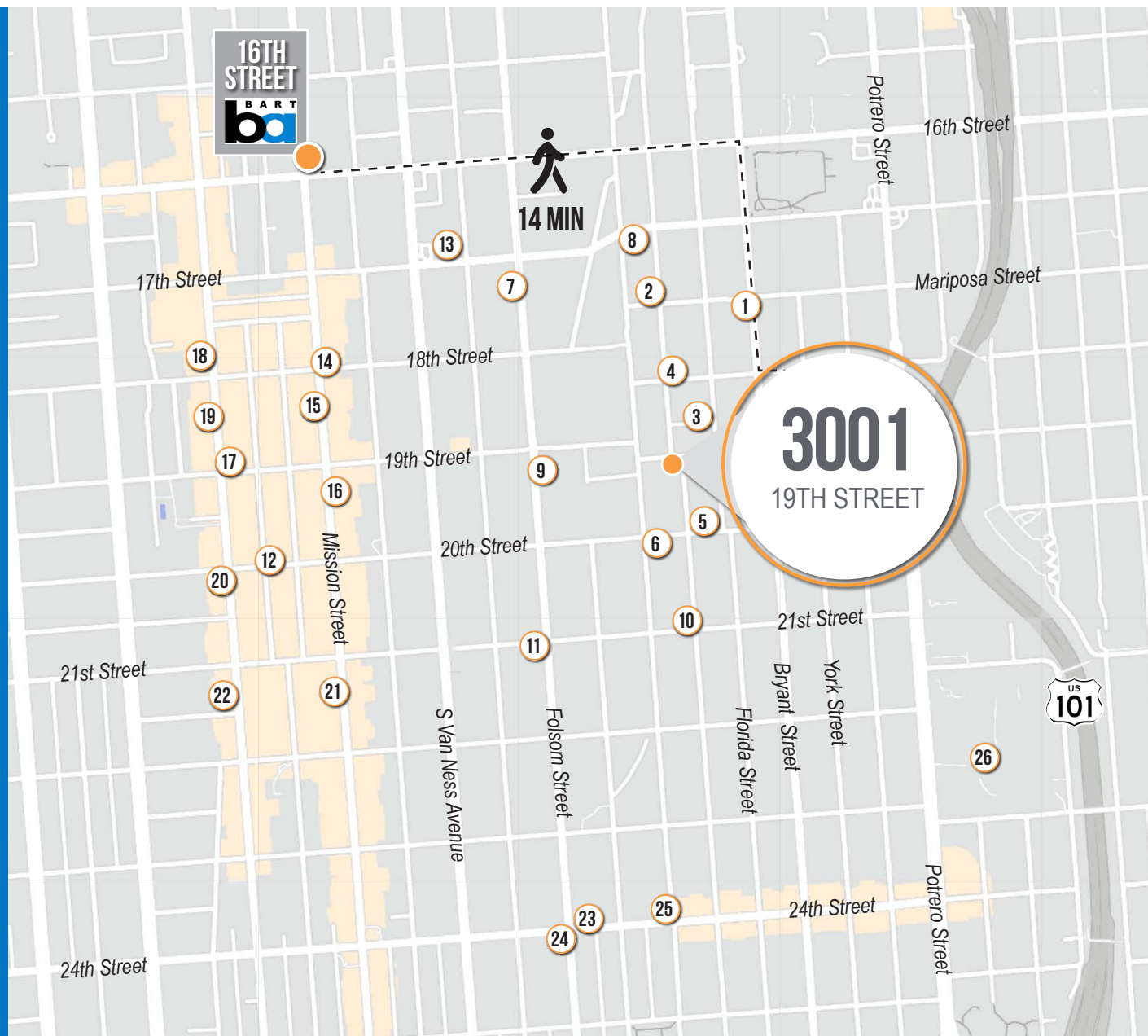
05 MIN to 101 On-Ramp
05 MIN to 80 On-Ramp
07 MIN to 280 On-Ramp



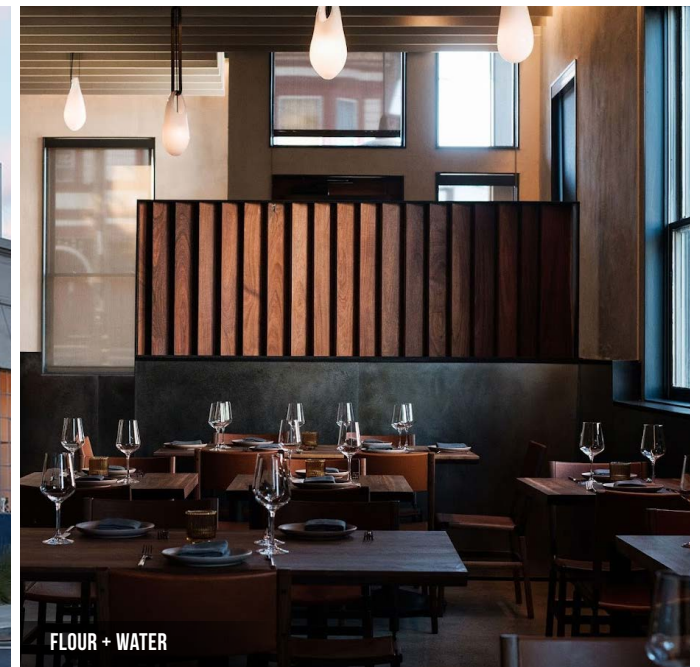
3001 19TH STREET

NEARBY AMENITIES

- 1..... Starbucks
- 2..... The Archery
- 3..... Farmhouse Kitchen Thai Cuisine
- 4..... Tartine Manufactory
- 5..... Trick Dog
- 6..... Flour + Water
- 7..... Stable Cafe
- 8..... Gus's Community Market
- 9..... The Homestead
- 10..... Bon, Nene
- 11..... Heirloom Café
- 12..... Garden Creamery
- 13..... Mission Bowling Club
- 14..... Grand Mission Donuts
- 15..... Mission Chinese Food
- 16..... Cha Cha Cha
- 17..... Etcetera Wine Bar
- 18..... Dumpling Story
- 19..... Dandelion Chocolate
- 20..... Smitten Ice Cream
- 21..... Foreign Cinema
- 22..... Ritual Coffee Roasters
- 23..... Haus Coffee
- 24..... Gyros and Tzatziki
- 25..... Temos Coffee
- 26..... Zuckerberg SF General



3001 19TH STREET



3001 19TH STREET



Corp. Lic. 01112906
www.tcpre.com

ZACH HAUPERT

D 415.539.1121 C 415.812.1219
zhaupert@tcpre.com DRE # 01822907

MICHAEL SANBERG

D 415.539.1103 C 415.697.6088
msanberg@tcpre.com DRE # 01930041

This document has been prepared by Touchstone Commercial Partners for advertising and general information only. Touchstone Commercial Partners makes no guarantees, representations or warranties of any kind, expressed or implied, regarding the information including, but not limited to, warranties of content, accuracy and reliability. Any interested party should undertake their own inquiries as to the accuracy of the information. Touchstone Commercial Partners excludes unequivocally all inferred or implied terms, conditions and warranties arising out of this document and excludes all liability for loss and damages arising there from. This publication is the copyrighted property of Touchstone Commercial Partners and/or its licensor(s). ©2025. All rights reserved.