



# FOR LEASE

- ✓ ± 16,736 SF Open Warehouse
- ✓ ± 20,316 SF Fenced Storage Yard
- ✓ Zoned Ogden City M-2
- ✓ Covered Truck Dock Area
- ✓ 3 Dock-High 10' x 8' Overhead Doors
- ✓ 1 Ground-Level 14' x 12' Overhead Door
- ✓ Three-Phase Power
- ✓ Close to Freeway & Major Roads
- ✓ MLS #2107274



**\$12,325.00/Month**



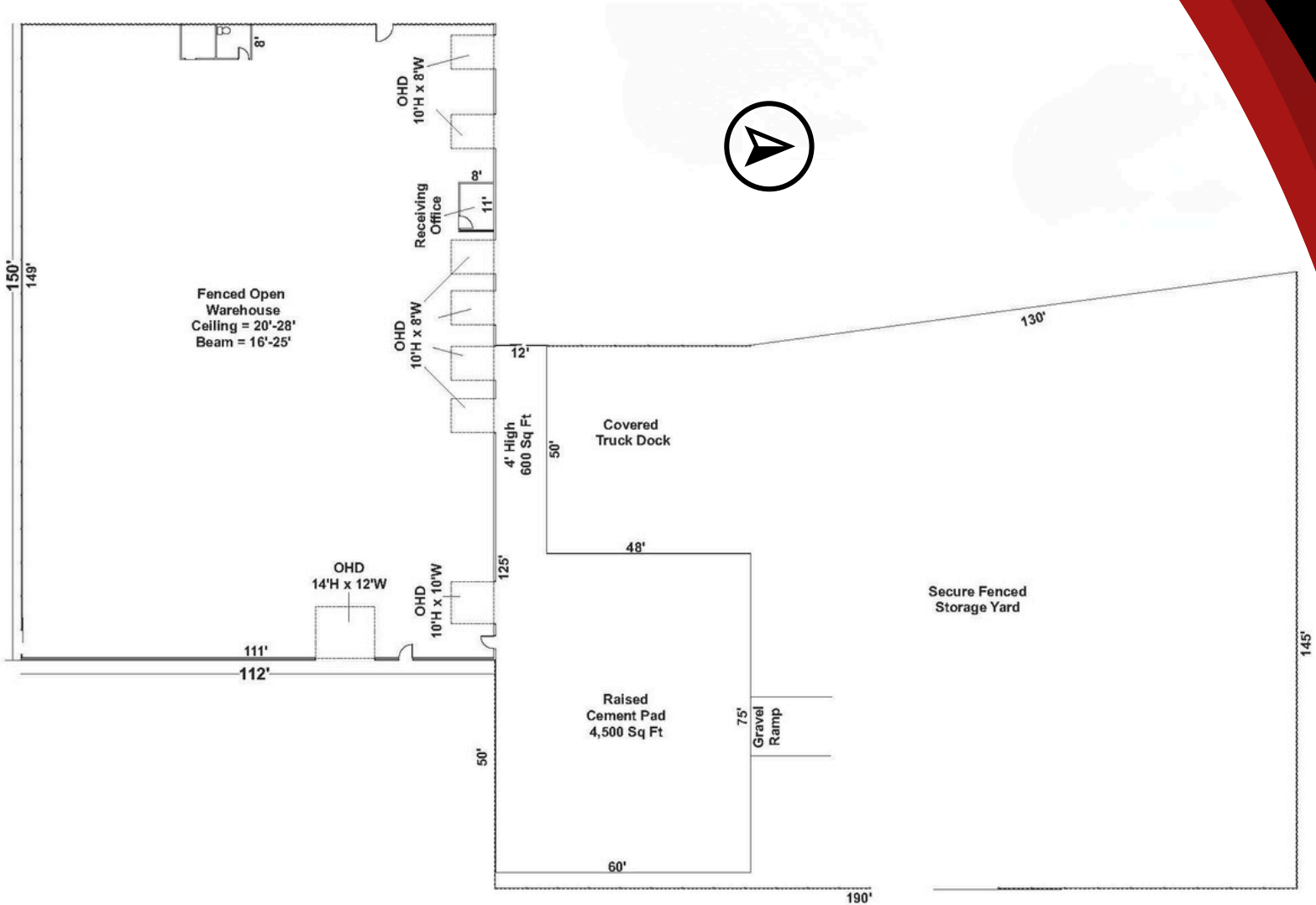
**1010 W Kershaw Street  
Ogden, Utah 84401**

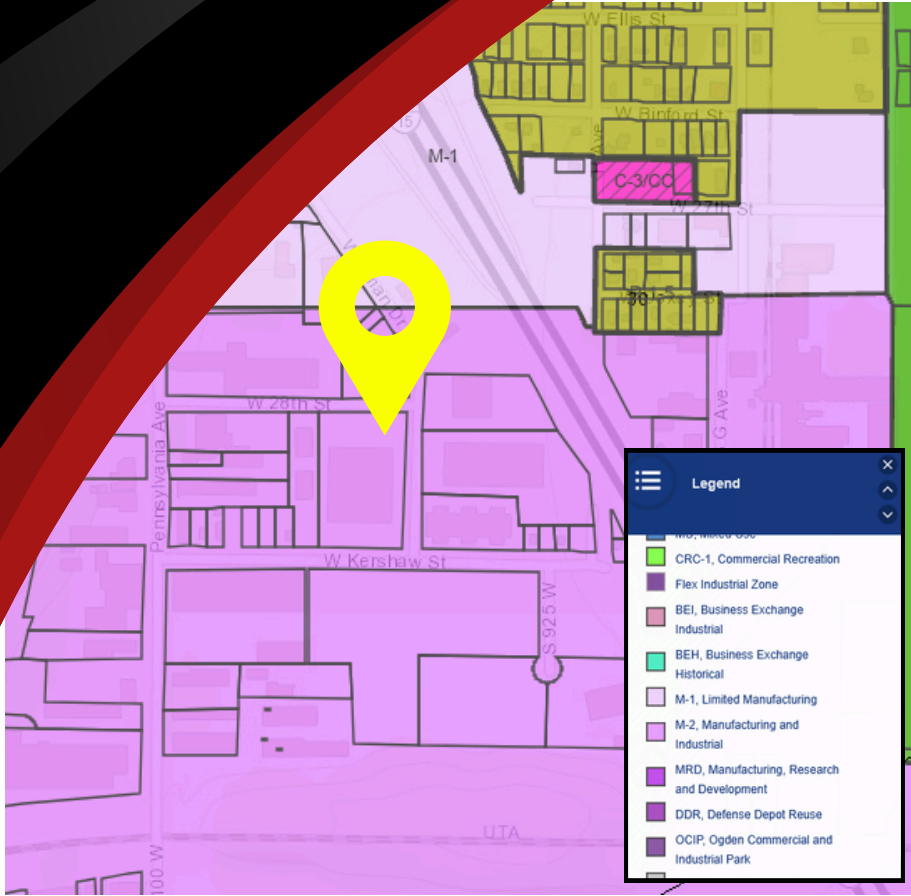


# Floor Plan

1010 Kershaw Ave  
Ogden UT 84401

Warehouse = 16,736 Sq Ft  
Fenced Yard = 20,316 Sq Ft  
Cement Area = 5,100





# 1010 W KERSHAW STREET OGDEN, UT 84401



1900 West

2550 South

Ogden Commercial  
Industrial Park

SITE

FARM MOUNT PARK ANNEX

Midland Drive

Pennsylvania Avenue

1900 West

Hinckley Drive

Ogden-Hinckley  
Regional Airport



**Aaron McCrady**

801-953-7012  
aaroncrest@gmail.com



**Garrett Pierson**

801-644-1361  
g@crestutah.com





# Contact Us



**Aaron McCrady**

801-953-7012

aaroncrest@gmail.com



**Garrett Pierson**

801-644-1361

g@crestutah.com



[www.crestutah.com](http://www.crestutah.com)

968 Chambers St #2,

South Ogden UT 84403

801-476-9500

