



Shopping Center Overview

- 540,000 SF shopping center on Shreveport-Barksdale Hwy, between Dee St & Knight St, just southwest of Clyde Fant Memorial Pkwy in Shreveport, LA
- Shadow anchored by 
- Excellent visibility and easily accessible with signage on Shreveport-Barksdale Hwy
- Available: 3,000 SF - 24,000 SF & Pad Site
30,000 SF former Big Lots

Demographics

| | 1 mile | 3 miles | 5 miles |
|--------------------|----------|----------|----------|
| 2016 Population | 8,697 | 72,188 | 181,597 |
| 5 Yr. Proj. Growth | 17.1% | 13.6% | 11.2% |
| Avg. HH Income | \$87,800 | \$78,839 | \$69,800 |

Join These Tenants



Traffic Counts

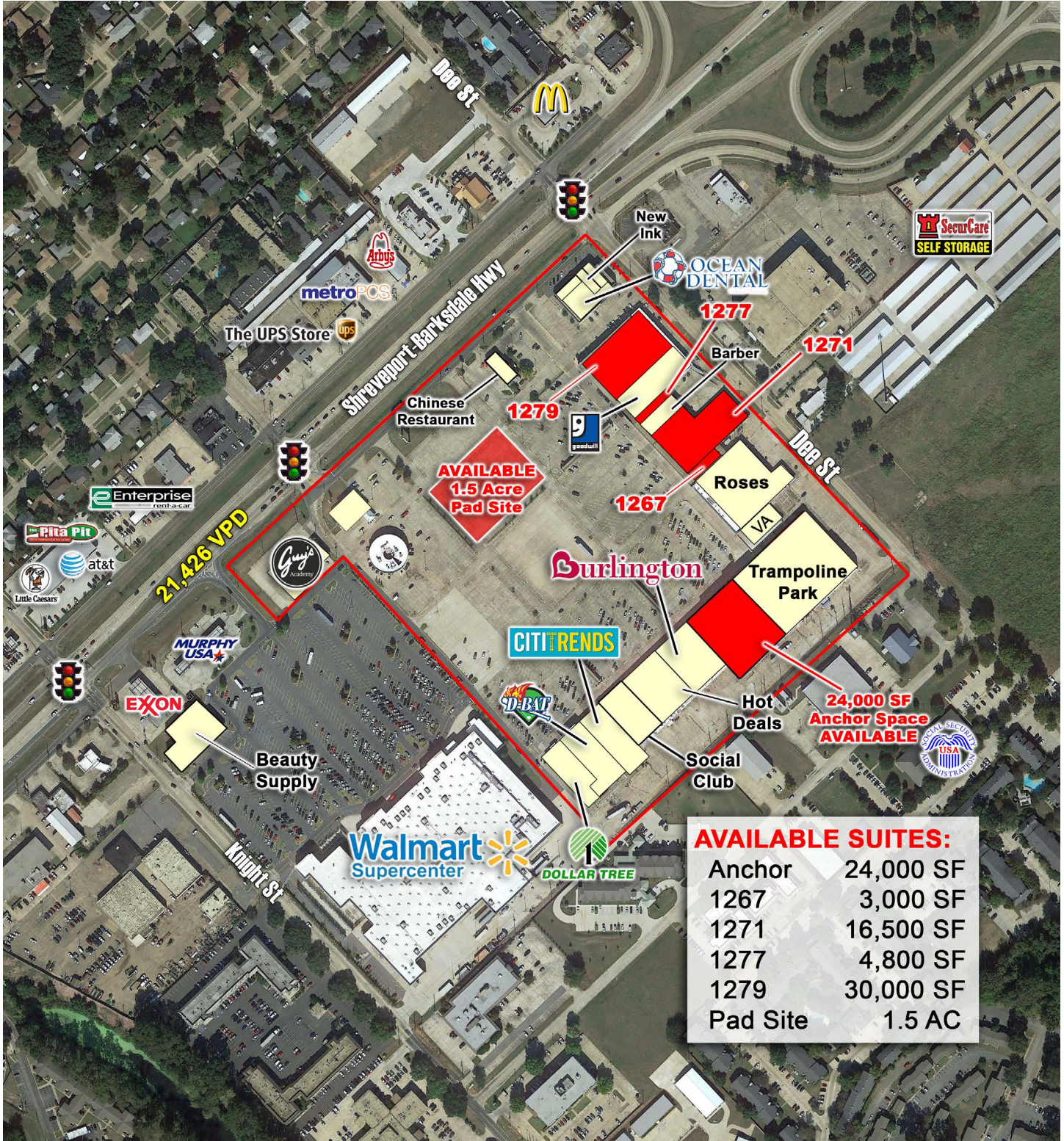
Shreveport-Barksdale Hwy: 21,549 VPD
(MPSI 2014)

Bo Avery
(972) 480-1788
bo@trimarsh.com

The information contained herein was obtained from sources deemed reliable; however, no guarantees, warranties or representations are made as to the completeness or accuracy thereof. The presentation of this real estate information is subject to errors, omissions, change of price, prior sale or lease or withdrawal without notice.

Shreve City Shopping Center

1253 Shreveport-Barksdale Hwy
Shreveport, Louisiana 71105

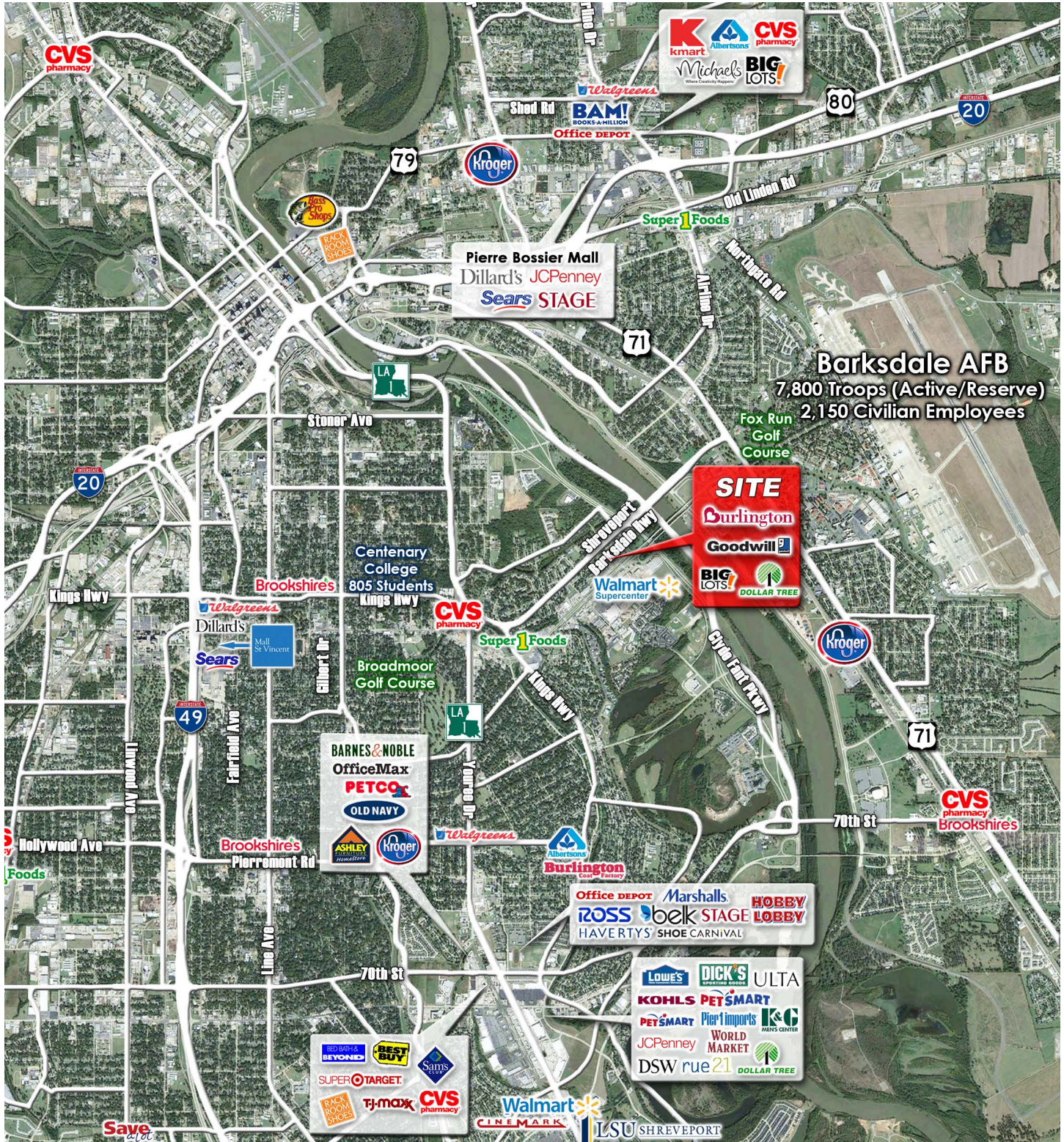


Bo Avery
(972) 480-1788
bo@trimarsh.com

The information contained herein was obtained from sources deemed reliable; however, no guarantees, warranties or representations are made as to the completeness or accuracy thereof. The presentation of this real estate information is subject to errors, omissions, change of price, prior sale or lease or withdrawal without notice.

Shreve City Shopping Center

1253 Shreveport-Barksdale Hwy
Shreveport, Louisiana 71105



Bo Avery

(972) 480-1788

bo@trimarsh.com

The information contained herein was obtained from sources deemed reliable; however, no guarantees, warranties or representations are made as to the completeness or accuracy thereof. The presentation of this real estate information is subject to errors, omissions, change of price, prior sale or lease or withdrawal without notice.