

PIEDMONT PROPERTIES
CORFAC INTERNATIONAL

INDUSTRIAL FOR LEASE

±36,000 SF | 4.41 ACRES | ZONED ML-1



2007 GATEWAY BLVD | CHARLOTTE, NC 28208

CHRISTIAN SAMARTINO, SIOR
704.248.9595 | cts@piedmontproperties.com

PROPERTY HIGHLIGHTS

2007 GATEWAY BLVD | CHARLOTTE, NC 28208

SQUARE FOOTAGE ±36,000 SF (4,000 SF office)

ACREAGE ±4.41 acres

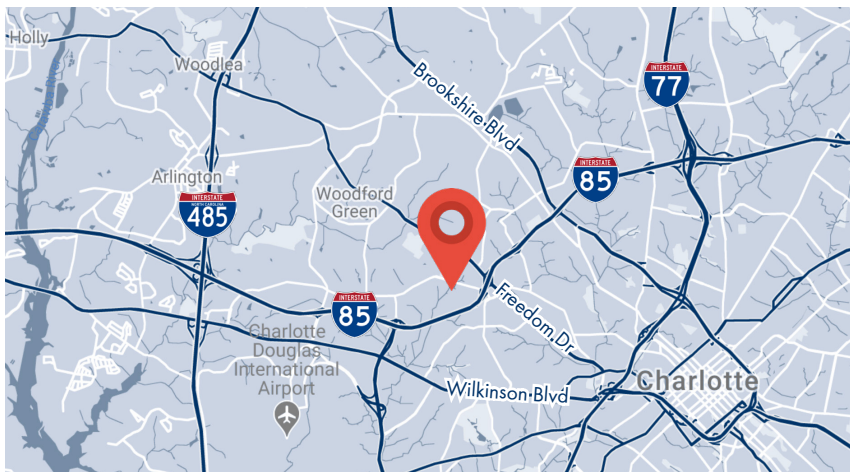
LOADING
Three 8'x10' dock high doors
One 12'x14' grade level door
One 8'x10' van height door

CEILING HEIGHT 16'-22' clear height

SPRINKLER Wet sprinkler system

ZONING Zoned ML-1

CONTACT BROKER FOR LEASE RATE

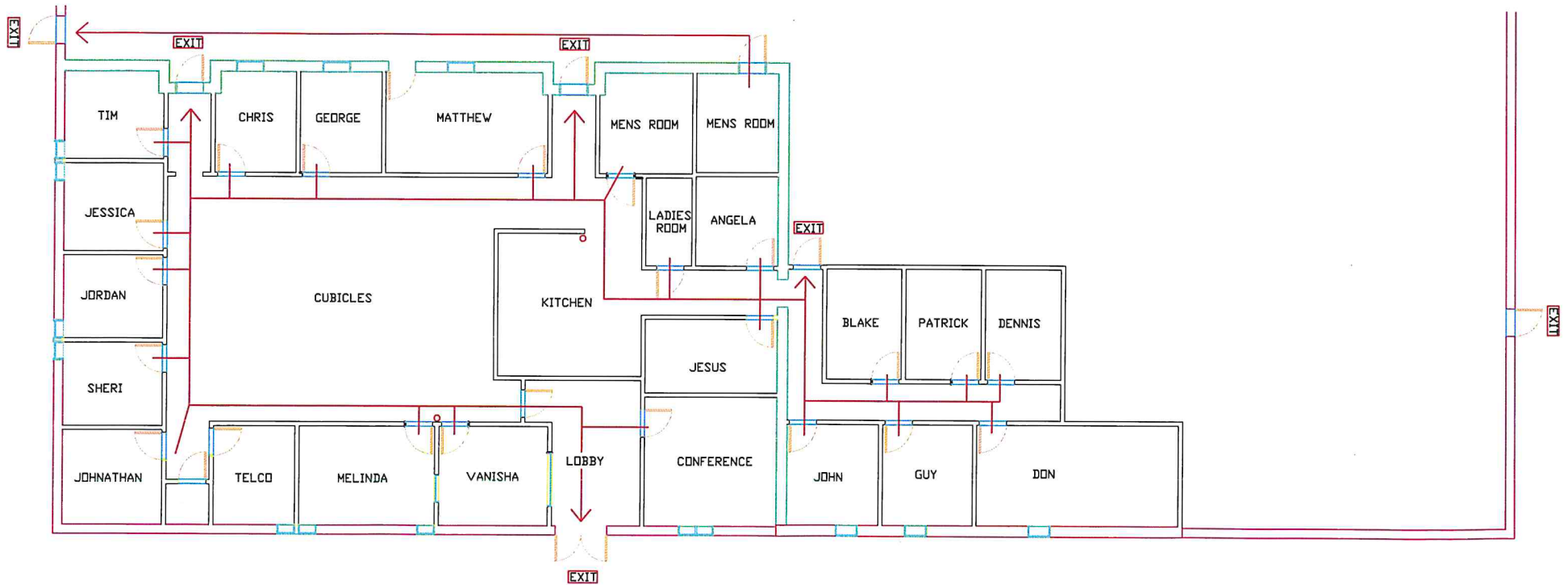


PIEDMONT PROPERTIES
CORFAC INTERNATIONAL

CHRISTIAN SAMARTINO, SIOR
704.248.9595
cts@piedmontproperties.com

FLOOR PLAN

2007 GATEWAY BLVD | CHARLOTTE, NC 28208



o FIRE EXTINGUISHER LOCATIONS

FIRE EXIT ROUTE

OFFICE PHOTOS

2007 GATEWAY BLVD | CHARLOTTE, NC 28208



WAREHOUSE PHOTOS

2007 GATEWAY BLVD | CHARLOTTE, NC 28208



INTERSTATE ACCESS

2007 GATEWAY BLVD | CHARLOTTE, NC 28208



±1 mile to I-85
±4.2 miles to CLT Airport
±4.3 miles to I-485

LOCATION

2007 GATEWAY BLVD | CHARLOTTE, NC 28208

