

**AVISON
YOUNG**

For Lease

Keith Business Centre

1225 East Keith Road, North Vancouver, BC



Flex office and warehouse space
available for lease

Ian Whitchelo*, Principal

604 647 5095

ian.whitchelo@avisonyoung.com

*Ian Whitchelo Personal Real Estate Corporation

Rory Thies, Associate

604 243 9591

rory.thies@avisonyoung.com



Opportunity

Ground floor flex office and industrial units offering a mix of privates offices and open work area available for lease at Keith Business Centre. Keith Business Centre is a 80,000 sf light industrial development on 4 acres of land and is comprised of a combination of flex warehouse, office units. This multi-tenant building has a strong mix of local and international businesses and offers many nearby amenities.

Property details

AVAILABLE AREA

Unit 2	17,283 sf
Unit 6	7,070 sf

LEASE RATE

Please contact listing agents

ADDITIONAL RENT (2026 ESTIMATE)

\$9.84 psf / annum (includes utilities)
**Management fees not included*

ZONING

CD-168 - the zoning for Keith Business centre is flexible and can accommodate a variety of industrial and office, trade and business schools and recreation uses.

PARKING

1 stall per 1,000 sf leased





AVAILABILITY

Unit 2	Immediate
Unit 6	March 1, 2026

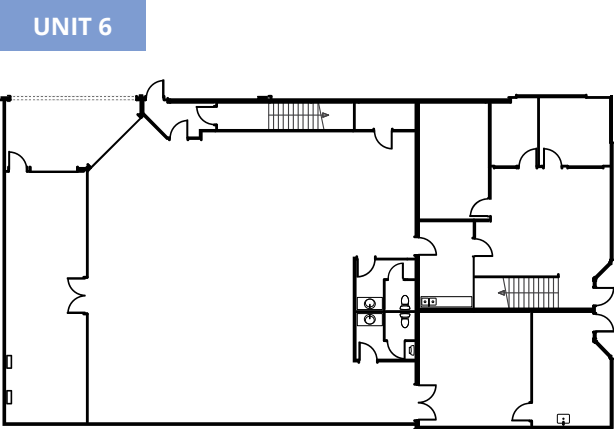
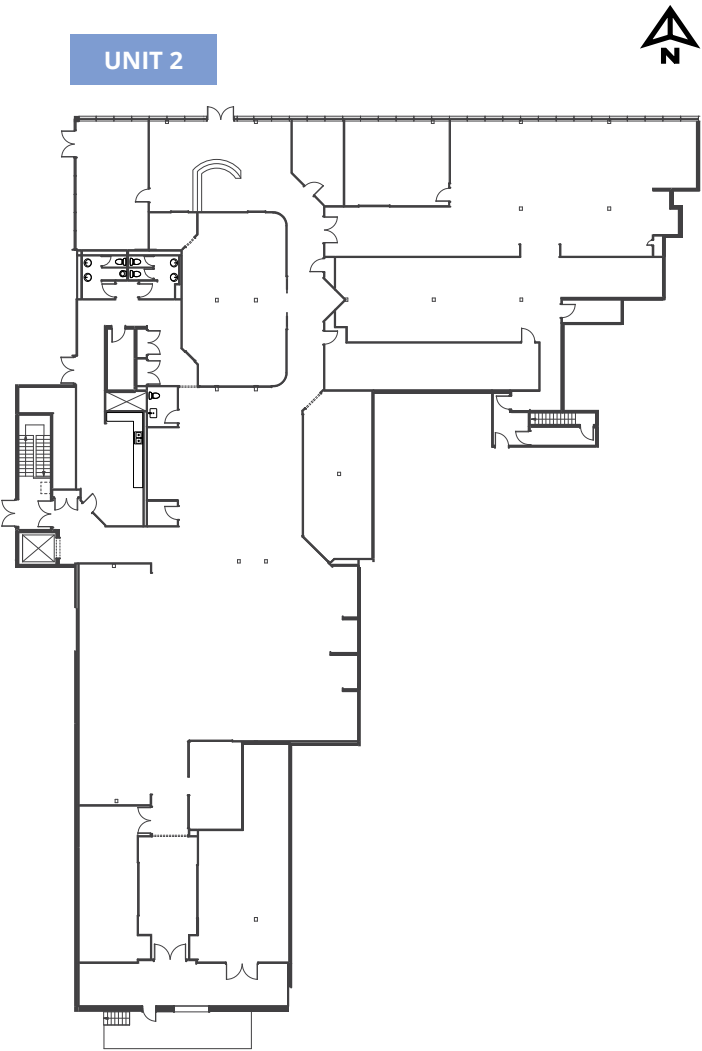
Location

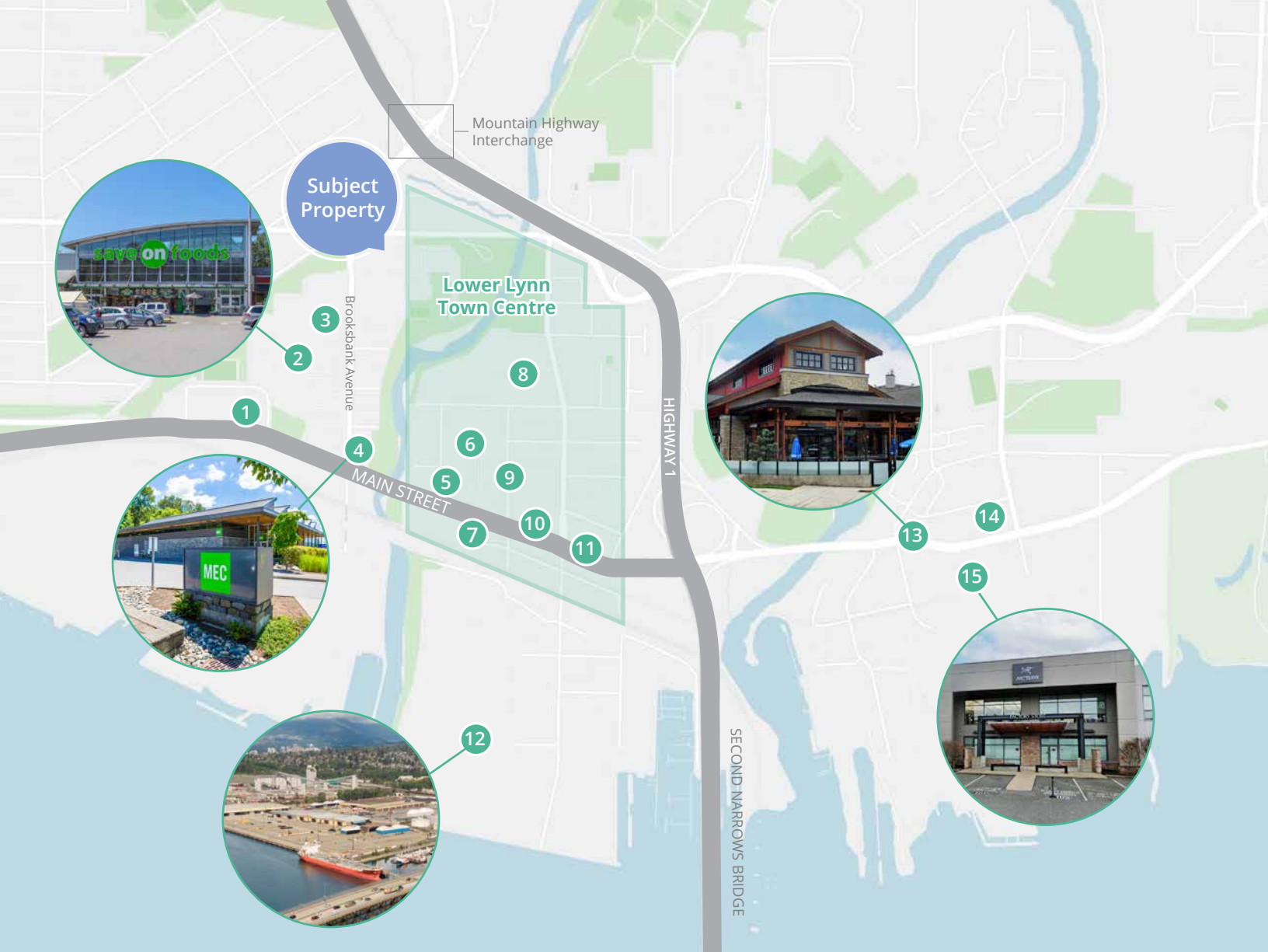
Keith Business Centre benefits from the prime corner location of Keith Road and Brooksbank Avenue, allowing for convenient public transit, easy commuting and quick access to Highway 1. The location neighbours a wide variety of businesses, such as the North Shore Winter Club and Park and Tilford Shopping Centre. Keith Business Centre is also a short walking distance from local trails and playgrounds within the Bridgeman and Lynn Creek Parks.

Property highlights

-  Ground floor flex office space with a mix of private offices, and open work spaces
-  Unit 2 Dock level loading
Unit 6 Grade level loading
-  Excellent exposure and signage opportunities
-  Unit 2 Up to 9' ceilings
Unit 6 Up to 23' ceilings
-  Adjacent to the North Shore Winter Club
-  Proximity to the new Mountain Highway interchange at Highway 1

Floorplans





Nearby amenities

- | | | |
|------------------------|--------------------|--------------------------------------|
| 1. Rona | 6. Canadian Tire | 11. A&W Canada |
| 2. Save-On-Foods | 7. Wildeye Brewing | 12. Lynnterm |
| 3. North Shore Studios | 8. Bridge Brewery | 13. Good Co. Northwoods |
| 4. MEC | 9. Tim Hortons | 14. Stong's Market |
| 5. McDonalds | 10. Wendy's | 15. Arc'teryx North Vancouver Outlet |

Contact for more information

Ian Whitchelo*, Principal
 604 647 5095
 ian.whitchelo@avisonyoung.com
**Ian Whitchelo Personal Real Estate Corporation*

Rory Thies, Associate
 604 243 9591
 rory.thies@avisonyoung.com

#2900-1055 West Georgia Street
 P.O. Box 11109 Royal Centre
 Vancouver, BC V6E 3P3, Canada

avisonyoung.ca