

PARK PLACE SHOPPING CENTER
LONGVIEW, TEXAS



Offered Exclusively by:
Beer Wells Real Estate Services
East Texas, Inc.
P. O. Box 3449
Longview, TX 75606
www.beerwellseasttexas.com

For more information contact:

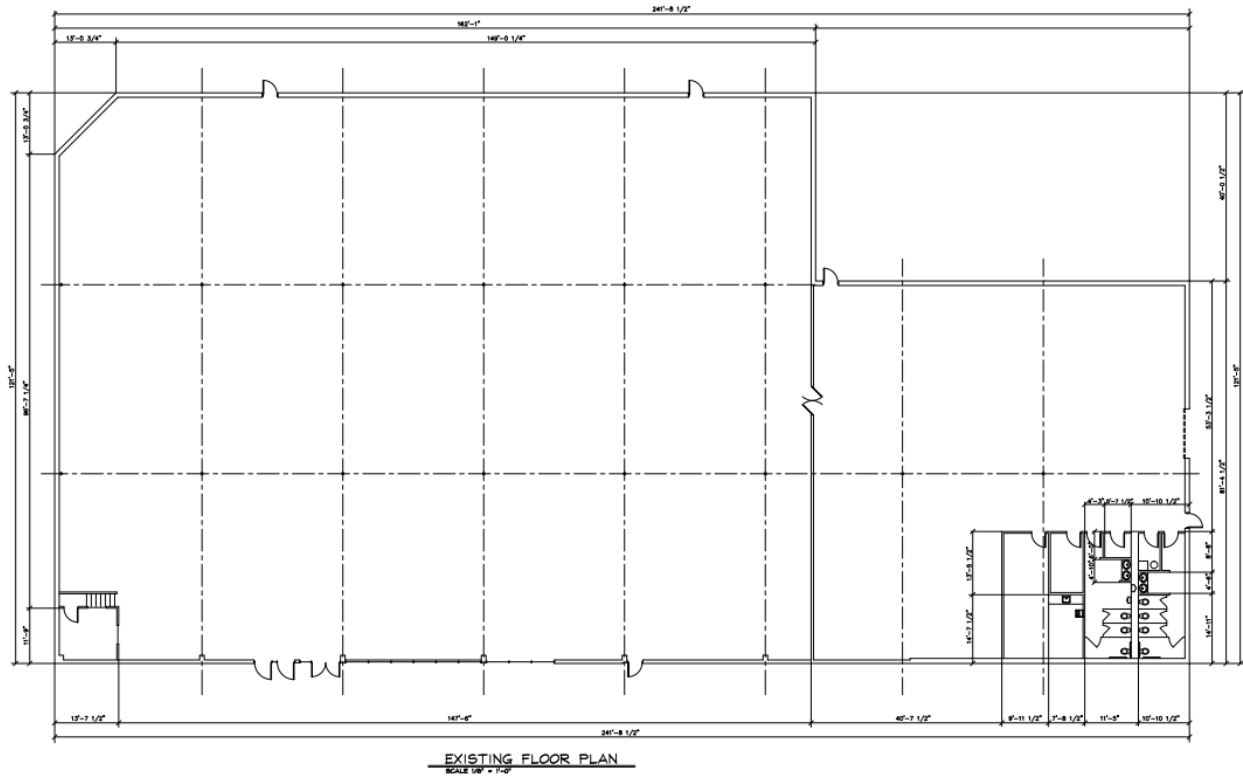
Walter R. Northcutt
(903) 753-2191
wnorthcutt@beerwellseasttexas.com

PROPERTY INFORMATION

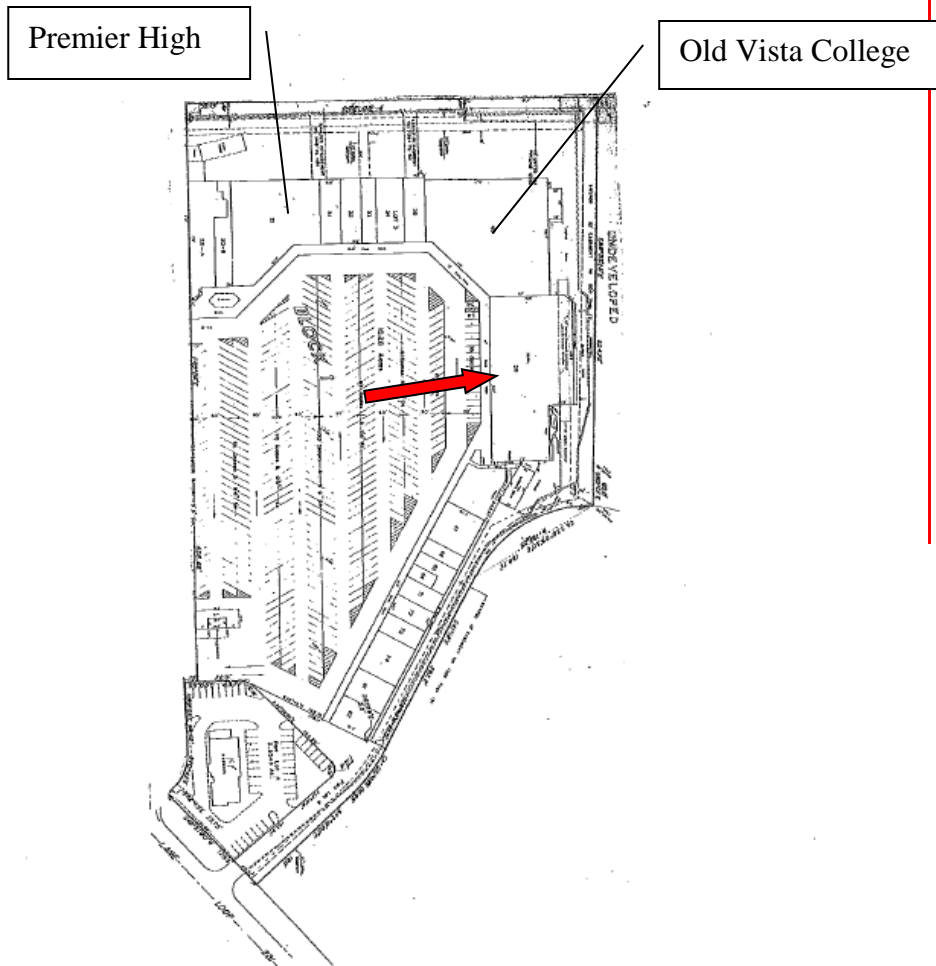
Location:	Loop 281 North West of Gilmer Road
General Access:	Loop 281
Gross Leasable Area:	Suite 50 - Approximately 25,600 SF
Amenities:	High Visibility, Easy Access, Excellent signage, Ample Parking
Zoning:	Commercial

FLOOR PLAN

(Actual Layout May Vary)



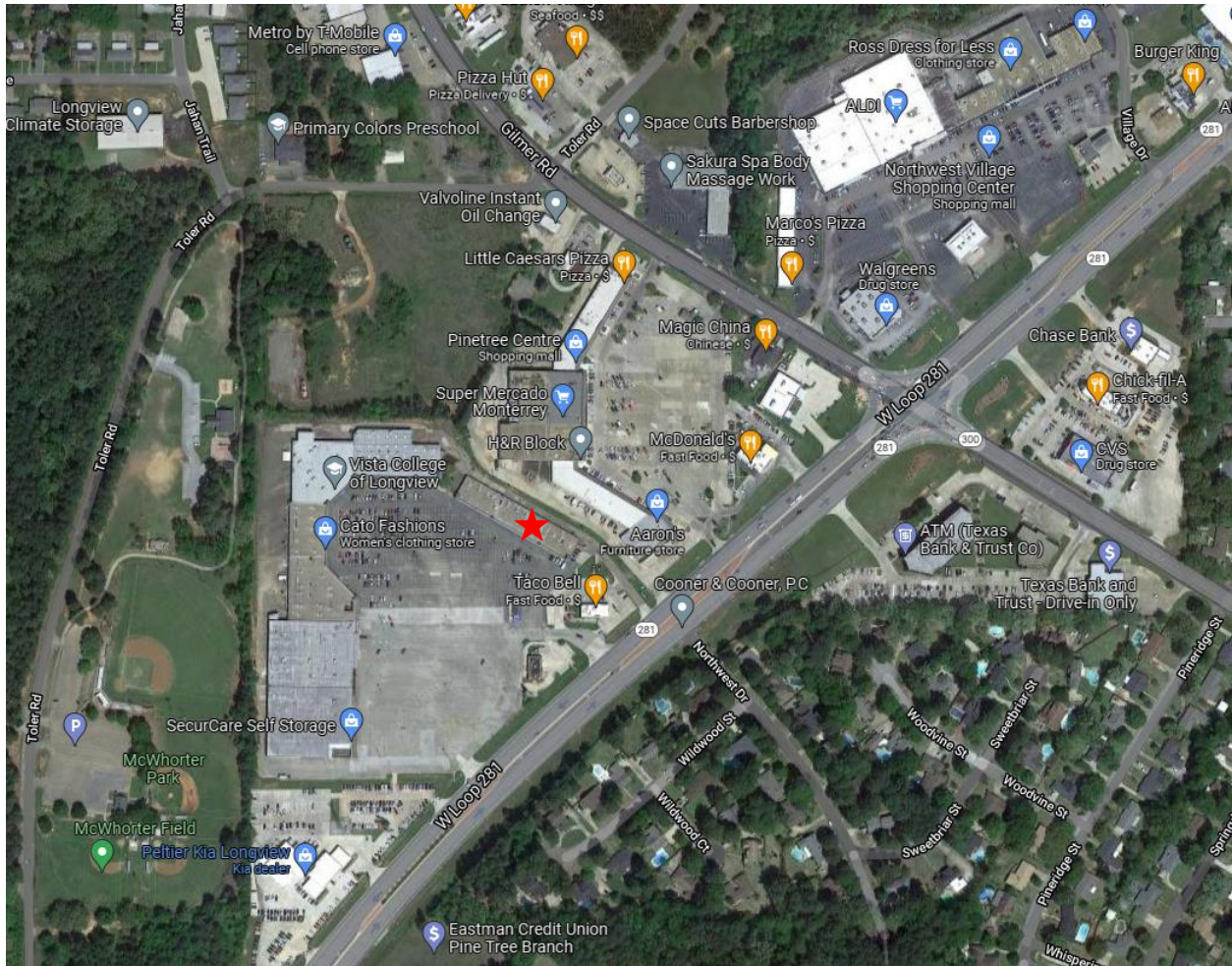
SITE PLAN



PARK PLACE SHOPPING CENTER
LONGVIEW, TEXAS



AERIAL

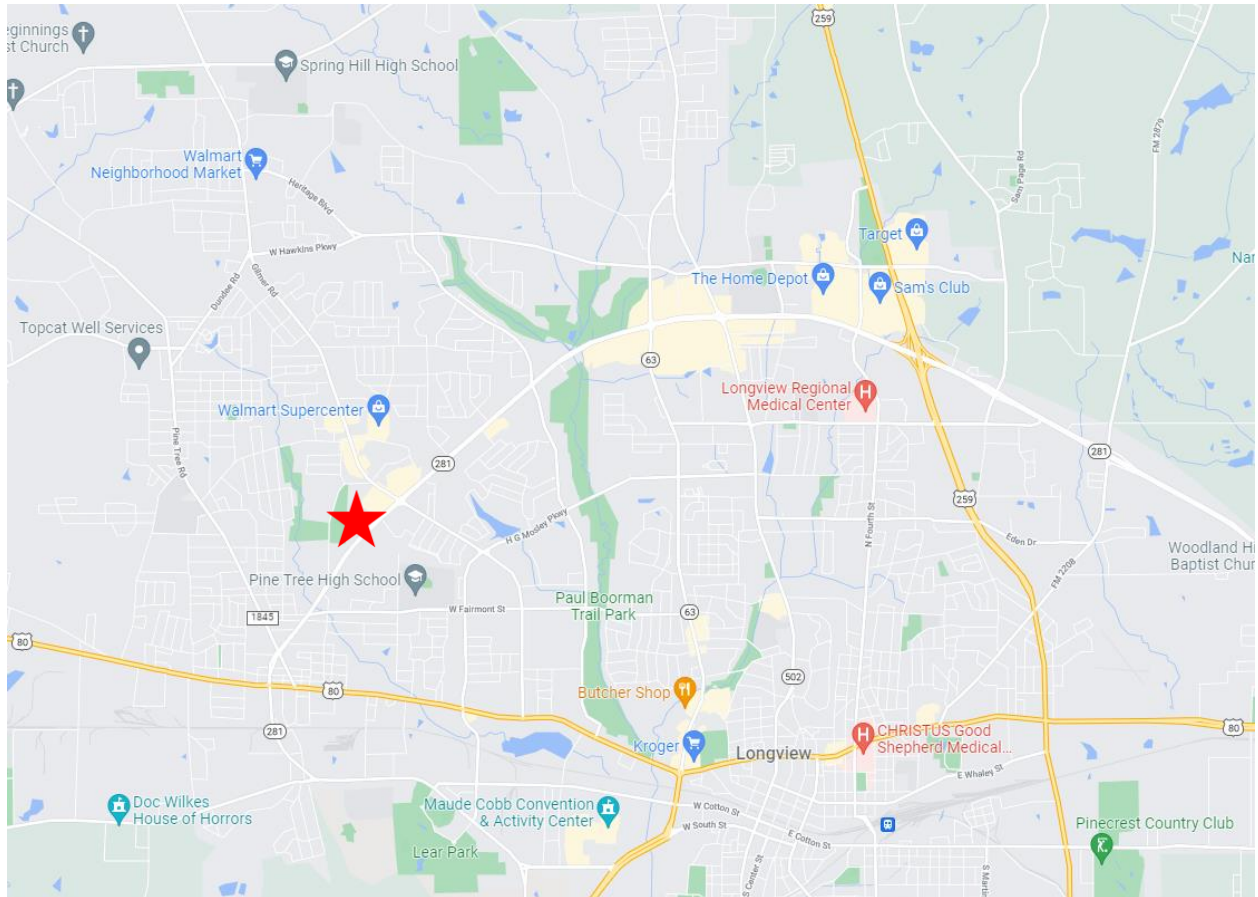


This information has been secured from sources we believe to be reliable, but we make no representations or warranties, expressed or implied, as to the accuracy of the information. References to square footage or age are approximate.

PARK PLACE SHOPPING CENTER
LONGVIEW, TEXAS



MAP



This information has been secured from sources we believe to be reliable, but we make no representations or warranties, expressed or implied, as to the accuracy of the information. References to square footage or age are approximate.

