

**1153  
BUCKSNORT  
ROAD**  
JACKSON, GA  
30233

**For Sale or Lease**  
**11,500+/- Service Shop on 3+/- Acres**

**BRYAN MARSHBURN, SIOR, CCIM**  
*Senior Vice President*  
404.942.2044  
bmarshburn@kingindustrial.com

**King** Industrial  
Realty, Inc.

Industrial • Commercial • Investment  
404.942.2000 | [kingindustrial.com](http://kingindustrial.com)



FOR  
SALE OR LEASE  
11,500+/- SF  
SERVICE SHOP



### PROPERTY HIGHLIGHTS

- 3,774+/- SF 2-Story Office Space
- 5 Drive-Through Bays
- (10) 14' x 12' Drive-In Doors
- 18' Clear Height
- 7/10th of Mile to I-75 at Exit 201/GA Hwy 36
- 37+/- Miles to I-16
- 44+/- Miles to I-285
- Fenced, Gated and Lighted Lot

### OFFERING SUMMARY

Lot Size:	3 Acres
Building Size:	11,500 SF
Zoning:	C-2

#### BRYAN MARSHBURN, SIOR, CCIM

Senior Vice President

404.942.2044

bmarshburn@kingindustrial.com

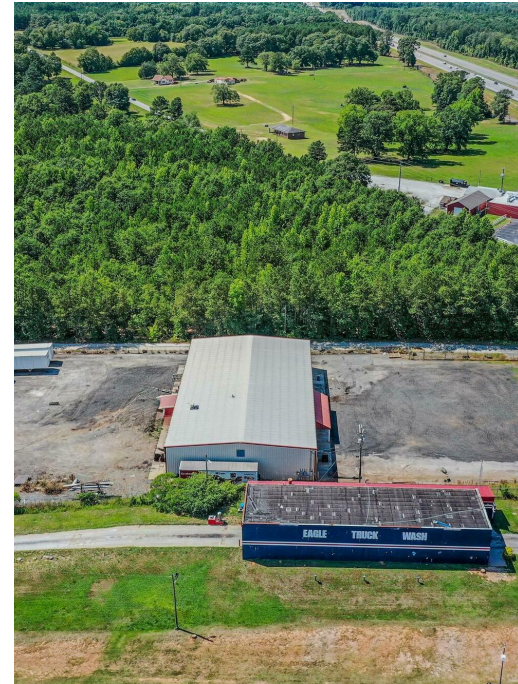
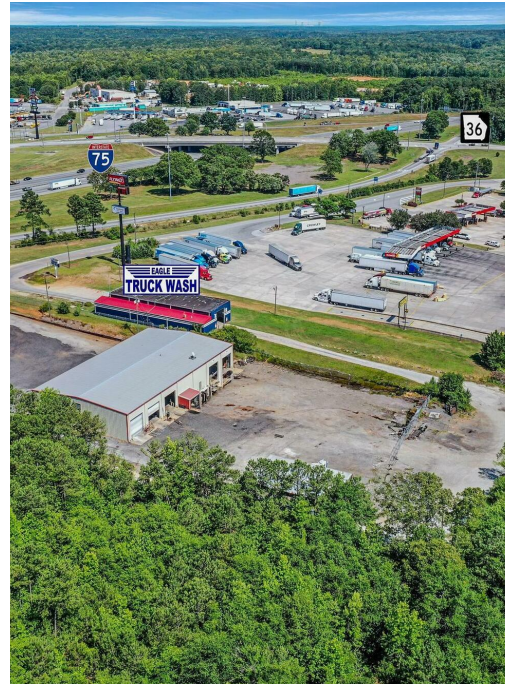
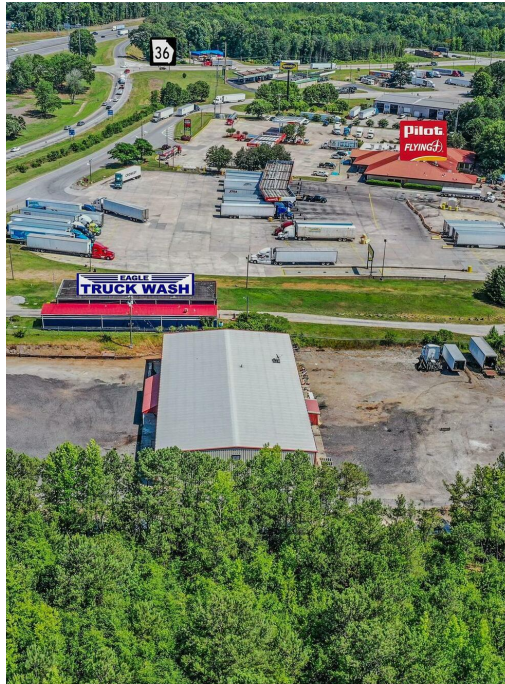
Every effort has been made to provide accurate information, but no liability is assumed for errors or omissions.



Industrial • Commercial • Investment  
404.942.2000 | kingindustrial.com



# BUILDING PHOTOS



**BRYAN MARSHBURN, SIOR, CCIM**

Senior Vice President

404.942.2044

[bmarshburn@kingindustrial.com](mailto:bmarshburn@kingindustrial.com)

*Every effort has been made to provide accurate information, but no liability is assumed for errors or omissions.*

**King** Industrial  
Realty, Inc.

**CORFAC**  
INTERNATIONAL

Industrial • Commercial • Investment  
404.942.2000 | [kingindustrial.com](http://kingindustrial.com)





EXCLUSIVELY LISTED BY:

**BRYAN MARSHBURN, SIOR, CCIM**

*Senior Vice President*

[bmarshburn@kingindustrial.com](mailto:bmarshburn@kingindustrial.com)

404.942.2044

**King** Industrial  
Realty, Inc.

Industrial • Commercial • Investment  
404.942.2000 | [kingindustrial.com](http://kingindustrial.com)