



Colliers



Available

Retail For Sublease

Lease Rate:

\$32.00

PSF NNN

Contact:

Mckay Fugal

Associate

+1 801 850 1250

mckay.fugal@colliers.com

Colliers

2100 Pleasant Grove Blvd., Suite 200

Pleasant Grove, UT 84062

Main: +1 801 947 8300

colliers.com

Regent Street Retail

135 S. Regent Street
Salt Lake City, UT 84111

Building amenities

- 1,568 SF available
- Shell space, ready for buildout
- TI's available
- Located in the heart of Salt Lake City Central Business District
- Adjacent to City Creek Center and Eccles Theatre, and close proximity to Salt Palace Convention Center



Population

1 Mile	29,100
3 Miles	138,795
5 Miles	234,839



2029 Projected Pop

1 Mile	34,691
3 Miles	148,732
5 Miles	247,845



2023-2028 Projected Annual Rate

1 Mile	3.58%
3 Miles	1.39%
5 Miles	1.08%



Avg Household Income

1 Mile	\$102,342
3 Miles	\$108,421
5 Miles	\$117,233



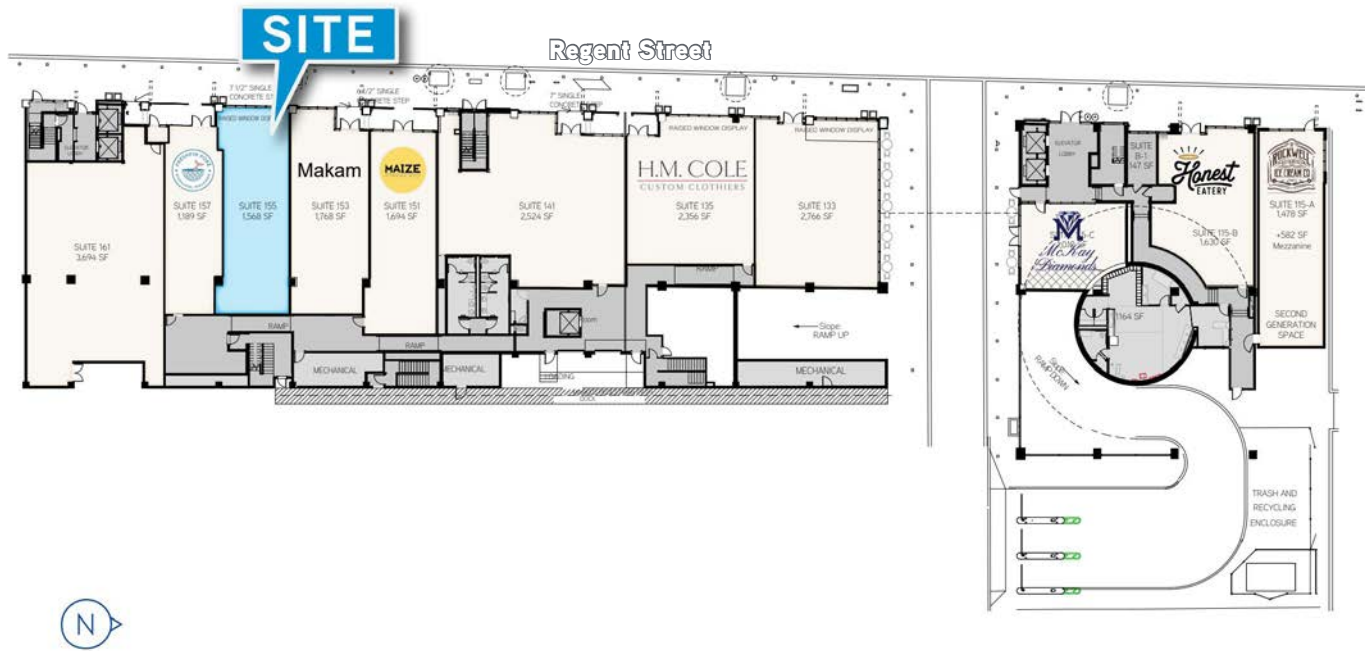
Daytime Population

1 Mile	94,836
3 Miles	230,654
5 Miles	378,566



Median Age

1 Mile	33.2
3 Miles	33.0
5 Miles	33.0





Colliers

2100 Pleasant Grove Blvd., Suite 200
Pleasant Grove, UT 84062
Main: +1 801 947 8300
colliers.com

Mckay Fugal

Associate
+1 801 850 1250
mckay.fugal@colliers.com

This document has been prepared by Colliers International for advertising and general information only. Colliers International makes no guarantees, representations or warranties of any kind, expressed or implied, regarding the information including, but not limited to, warranties of content, accuracy and reliability. Any interested party should undertake their own inquiries as to the accuracy of the information. Colliers International excludes unequivocally all inferred or implied terms, conditions and warranties arising out of this document and excludes all liability for loss and damages arising there from. This publication is the copyrighted property of Colliers International and/or its licensor(s). ©2024. All rights reserved.