



AVAILABLE FOR SUBLEASE

FULL SERVICE AUTO DEALERSHIP
15800 VENTURA BLVD.
ENCINO, CA

TY DAGDAGAN

Associate
+1 310 550 2677
ty.dagdagan@cbre.com
Lic. 02134714

TIMOTHY L. BOWER

Senior Vice President
+1 310 550 2521
tim.bower@cbre.com
Lic. 00864693

CHASE DEUSCHLE

Senior Vice President
+1 954 356 0458
chase.deuschle@cbre.com



15800 VENTURA BLVD. ENCINO, CA LOS ANGELES COUNTY

CBRE, Inc. is please to present the opportunity to sublease a full service automotive dealership in Encino, California - Los Angeles County.

HIGHLIGHTS

- Rare sublease opportunity of a full service auto dealership
- ±58,188 cars per day on Ventura Blvd.
- Available for sublease through December 31, 2028 in addition to one 5-year option
- ±245 of frontage on Ventura Blvd.
- Approximately 0.5 miles from the 405 Fwy and 101 Fwys

PROPERTY DETAILS

- ±19,842 square foot building
- ±2.38 acres of land
- APN: 2283-009-014
- Large facade signage, perfect for re-branding
- 17 service bays for auto repair/service
- Parking for 158 cars
- Immediate occupancy
- Power:
 - Main dealership: 600 Amps, 3 phase, 4 wire service
 - Service area: 800 Amps, 120v, 3 phase, 4 wire service

DEMOGRAPHICS

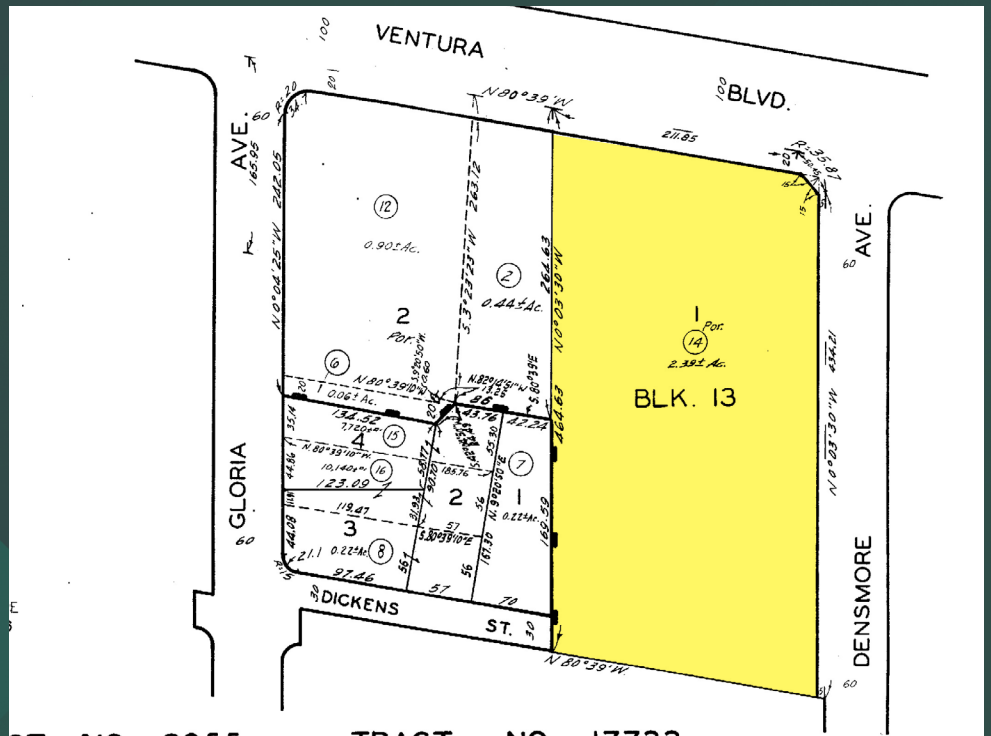
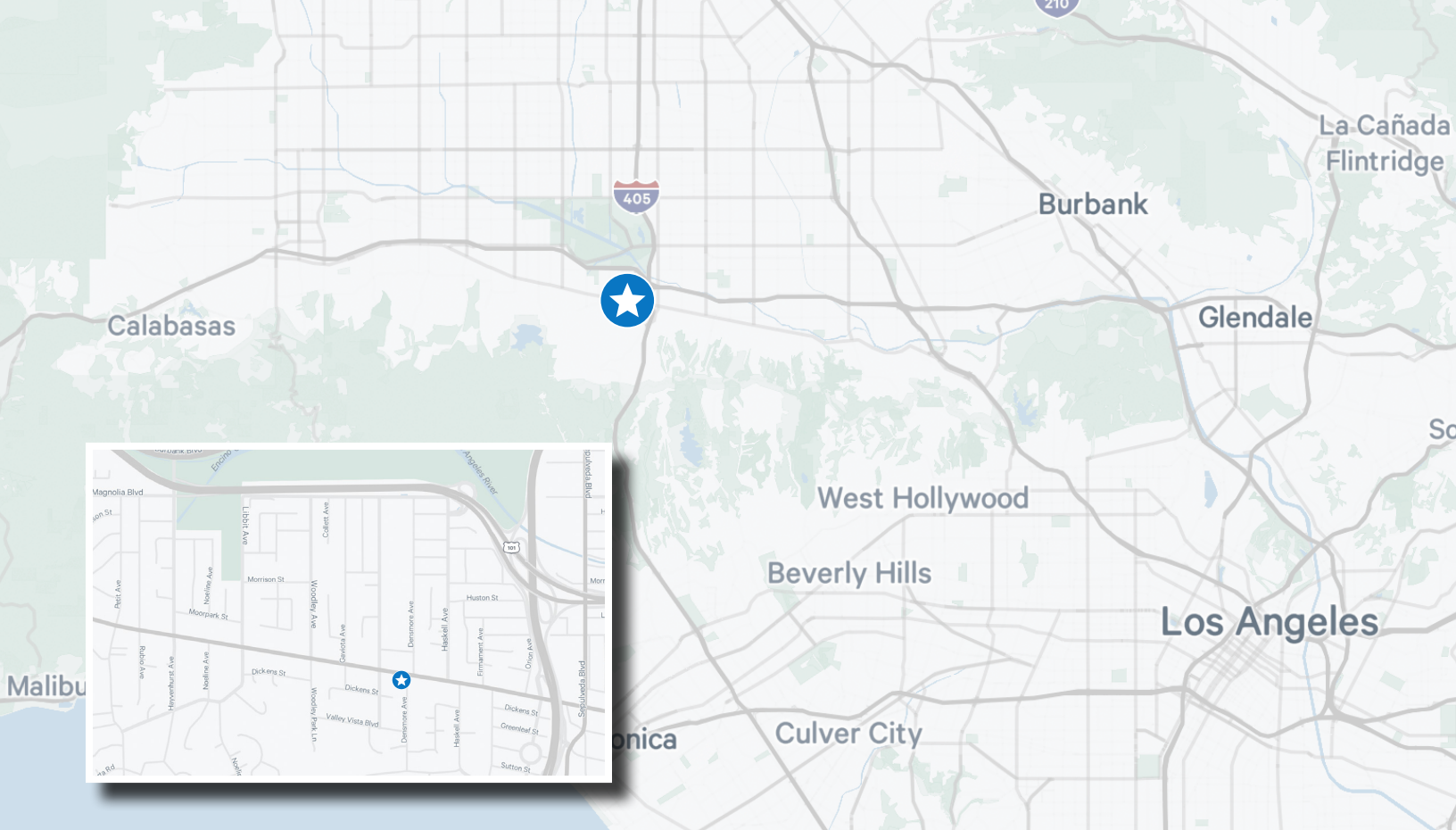
	1 Mile	3 Mile	5 Mile
2023 Est. Population	13,501	154,394	451,954
2023 Households	5,953	62,759	167,522
Average HH Income	\$153,668	\$85,201	\$75,434

SHOWN BY APPOINTMENT ONLY

© 2020 CBRE, Inc. All rights reserved. This information has been obtained from sources believed reliable, but has not been verified for accuracy or completeness. You should conduct a careful, independent investigation of the property and verify all information. Any reliance on this information is solely at your own risk.







For more information, please contact:

TY DAGDAGAN

Associate
 +1 310 550 2677
 ty.dagdagan@cbre.com
 Lic. 02134714

TIMOTHY L. BOWER

Senior Vice President
 +1 310 550 2521
 tim.bower@cbre.com
 Lic. 00864693

CHASE DEUSCHLE

Senior Vice President
 +1 954 356 0458
 chase.deuschle@cbre.com

