

WASCO BUILDING

FOR LEASE

BUILDING SIZE	14,650 SF
CONTIGUOUS SF	8,439 SF
LEASE RATE	Negotiable
CLASS A	Modern flex space with amenities
PARKING	Extensive parking available at no cost to tenants and visitors
BUILDING STYLE	Contemporary building with expansive natural lighting
LOCATION	Positioned within the core of Columbia Gorge activity
TOURISM	Renowned, top-ranked tourist destination
YEAR BUILT	2006
ZONING	Light Industrial
OPPORTUNITY ZONE	Yes

8,439 SF

Available

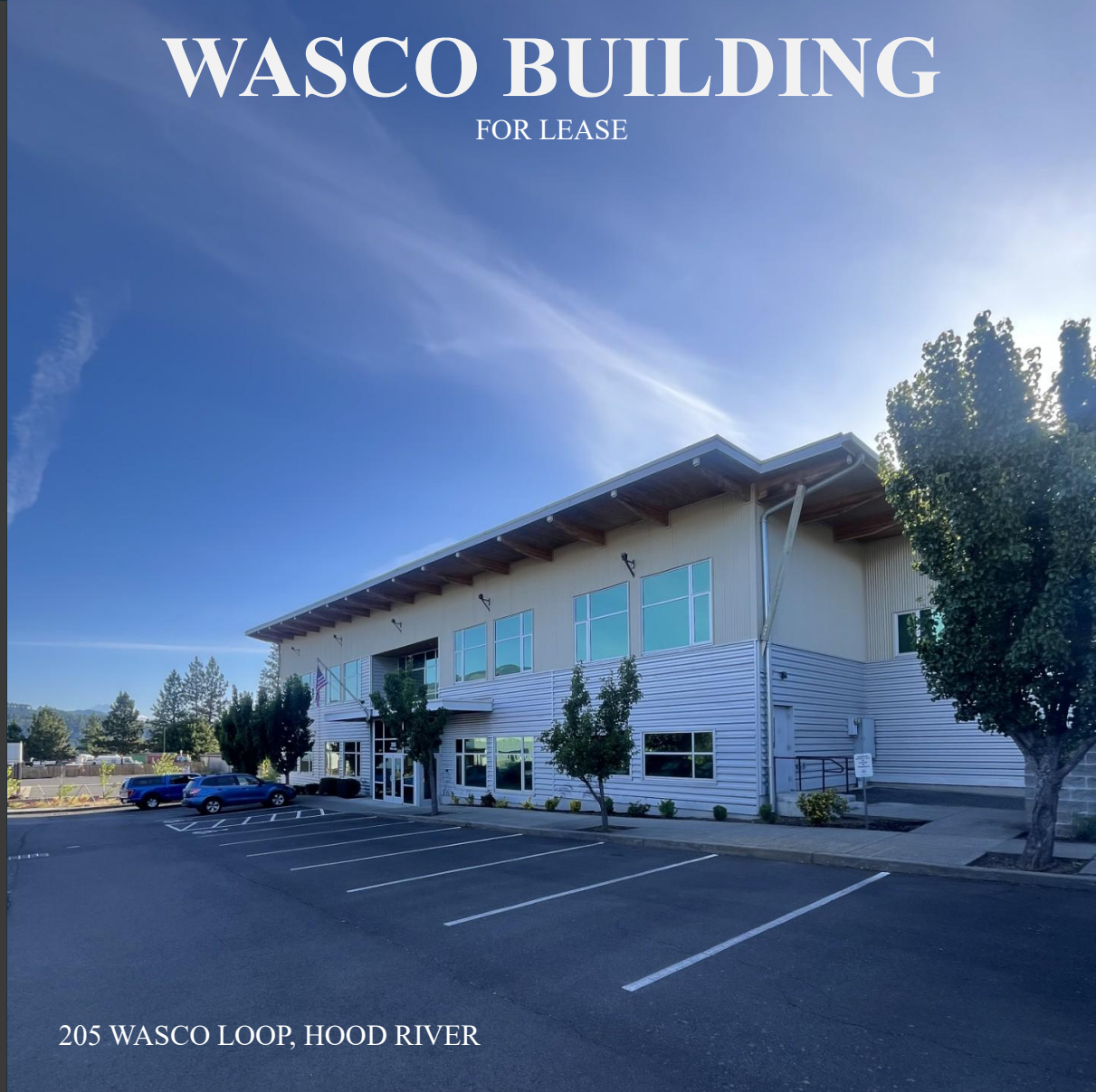
Negotiable

Lease Rate

Port of Hood River

541.386.1645 | Info@portofhoodriver.com

205 WASCO LOOP, HOOD RIVER



Portofhoodriver.com

Information deemed reliable but not guaranteed. Prospective tenants should conduct independent investigation and consult appropriate advisors.

No warranties are made by the Port of Hood River. This material is proprietary and may not be used or reproduced without written consent.

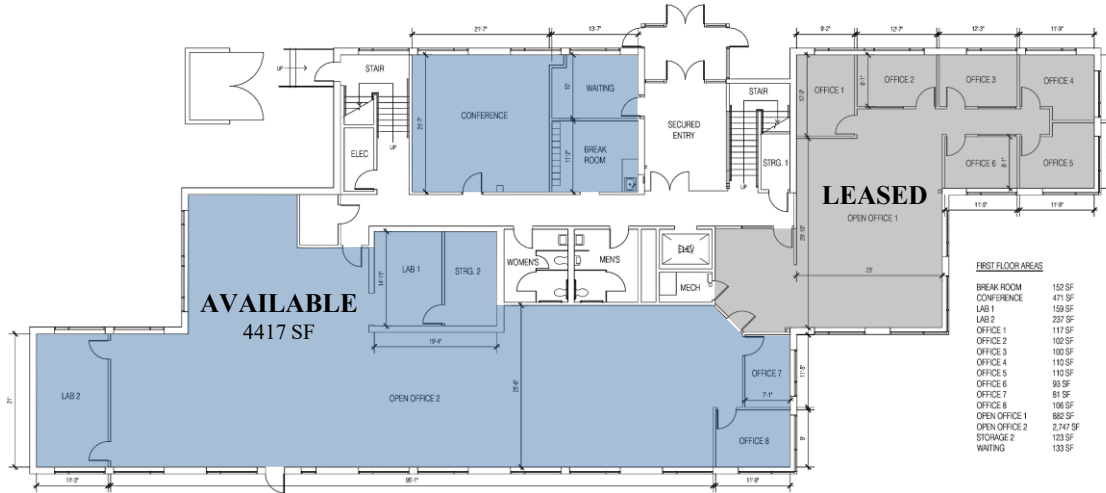


FLOOR PLAN

4,417 SF

1ST FLOOR

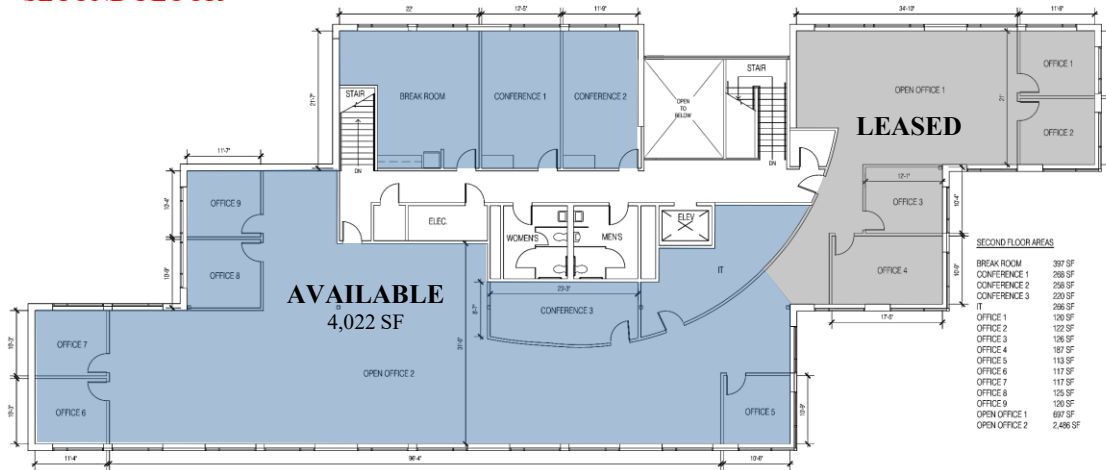
FIRST FLOOR



4,022 SF

2ND FLOOR

SECOND FLOOR



Portofhoodriver.com

Information deemed reliable but not guaranteed. Prospective tenants should conduct independent investigation and consult appropriate advisors.

No warranties are made by the Port of Hood River. This material is proprietary and may not be used or reproduced without written consent.



WASCO INTERIOR

FIRST FLOOR



SECOND FLOOR



Portofhoodriver.com

Not all rooms or spaces available for lease shown. Information deemed reliable but not guaranteed. Prospective tenants should conduct independent investigation and consult appropriate advisors. No warranties are made by the Port of Hood River. This material is proprietary and may not be used or reproduced without written consent.





Portofhoodriver.com

Information deemed reliable but not guaranteed. Prospective tenants should conduct independent investigation and consult appropriate advisors.

No warranties are made by the Port of Hood River. This material is proprietary and may not be used or reproduced without written consent.

