



844 169th St

844 169th St, Hammond, IN 46324

MCR PARTNERS LLC



Matt Reardon

MCR Partners LLC

5920 Hohman Ave, Hammond, IN 46320

matt.reardon@mcrpartnersltd.com

(219) 741-9511



844 169th St

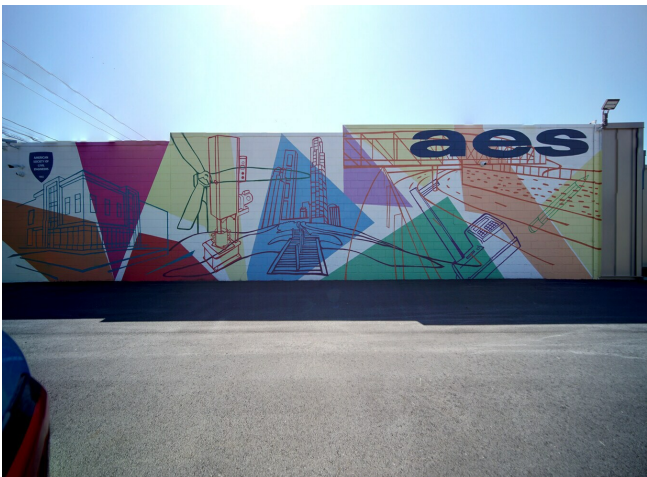
\$17.00 /SF/YR

Newly remodeled in 2024 professional office building with parking. Property is ADA accessible. Property includes separate entrance for tenant.

Owner is seeking a medical use including office/exam/urgent care.

Other property use is professional engineering services...

- Property is newly remodeled and ideal for medical or professional businesses.



Rental Rate:	\$17.00 /SF/YR
Property Type:	Office
Property Subtype:	Medical
Building Class:	B
Rentable Building Area:	9,345 SF
Year Built:	1950
Walk Score ®:	76 (Very Walkable)
Rental Rate Mo:	\$1.42 /SF/MO

1

1st Floor

Space Available	4,500 SF
Rental Rate	\$17.00 /SF/YR
Date Available	Now
Service Type	TBD
Built Out As	Standard Office
Space Type	Relet
Space Use	Office
Lease Term	Negotiable

Excellent professional office or medical space located off of Calumet Avenue in central Hammond. This location features newly remodeled open floor plan, adequate parking for both employees and customers.



844 169th St, Hammond, IN 46324

Newly remodeled in 2024 professional office building with parking. Property is ADA accessible. Property includes separate entrance for tenant.

Owner is seeking a medical use including office/exam/urgent care.

Other property use is professional engineering services

Property Photos



Building Exterior



Building Entrance

Property Photos



844.169th-hammond_int 3



Office Space

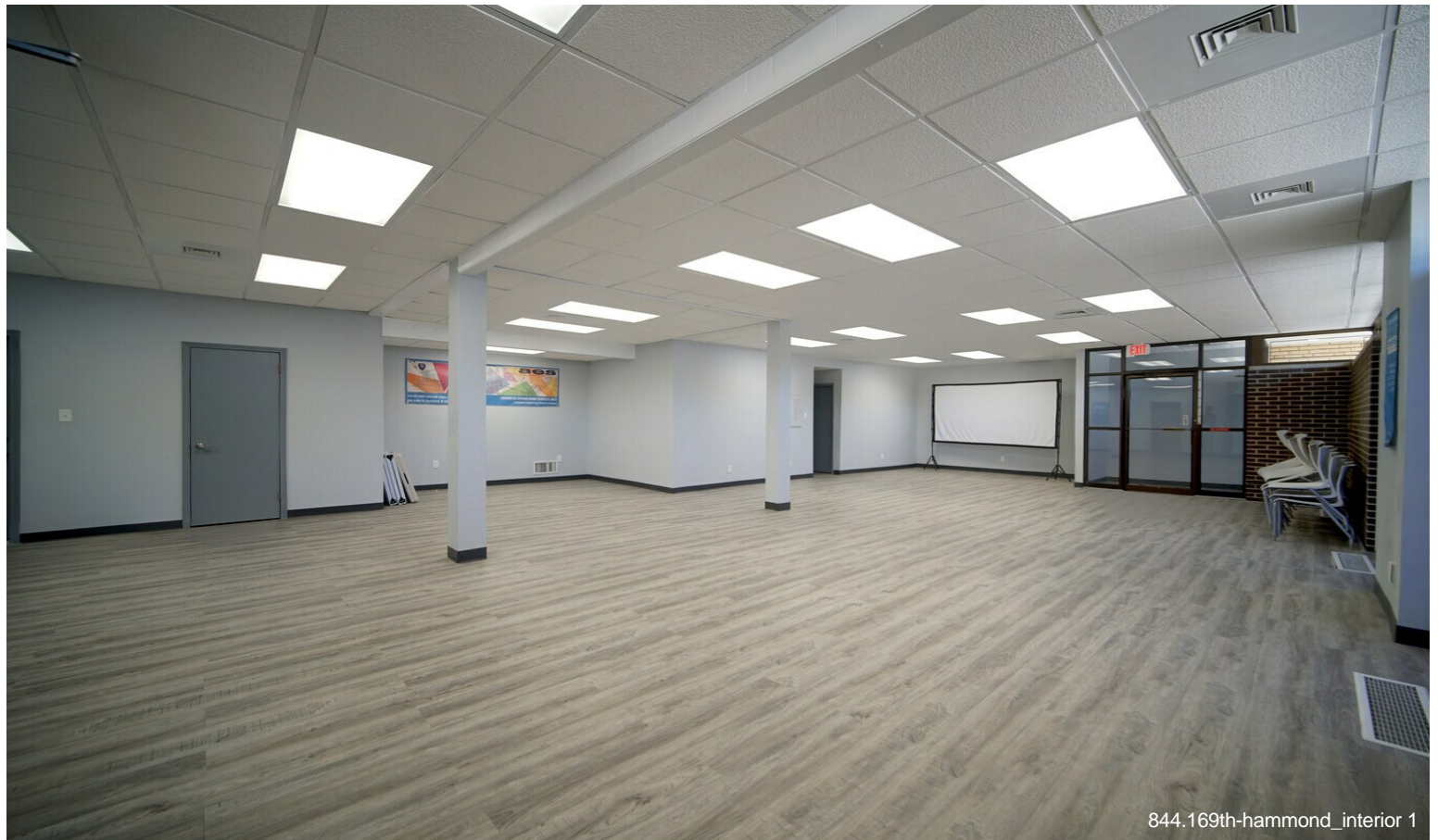
Property Photos



Property Photos



844.169th-hammond_int 2



844.169th-hammond_interior 1

Property Photos



Property Photos

