

# FOR LEASE

BALTIMORE COUNTY, MD

# 3112 LORD BALTIMORE DR

EXECUTIVE PARK WEST | 3100-3300 LORD BALTIMORE DRIVE | WINDSOR MILL, MD 21244



## PROPERTY HIGHLIGHTS:

- ▶ RECENTLY ADDED! FITNESS CENTER AND CONFERENCE ROOM
- ▶ TOTAL OF 450,000 SQUARE FEET IN TWELVE BUILDINGS IN THIS 30-ACRE BUSINESS PARK
- ▶ WITHIN 3 MILES OF SOCIAL SECURITY ADMINISTRATION HEADQUARTERS AND CENTER FOR MEDICARE AND MEDICAID SERVICES
- ▶ WITHIN TWO (2) MILES OF BELTWAY EXIT 17 AT SECURITY BOULEVARD

**DAVID S. BROWN**  
ENTERPRISES, L.T.D.

**KEVIN KEANE | SVP, OFFICE LEASING**  
410.581.2519 | KEVIN@DAVIDSBROWN.COM

**BRENT MANGUM | VP, OFFICE LEASING**  
410.581.2518 | BRENT@DAVIDSBROWN.COM

**RYAN BARRETT | LEASING ASSOCIATE**  
410.581.2521 | RBARRETT@DAVIDSBROWN.COM

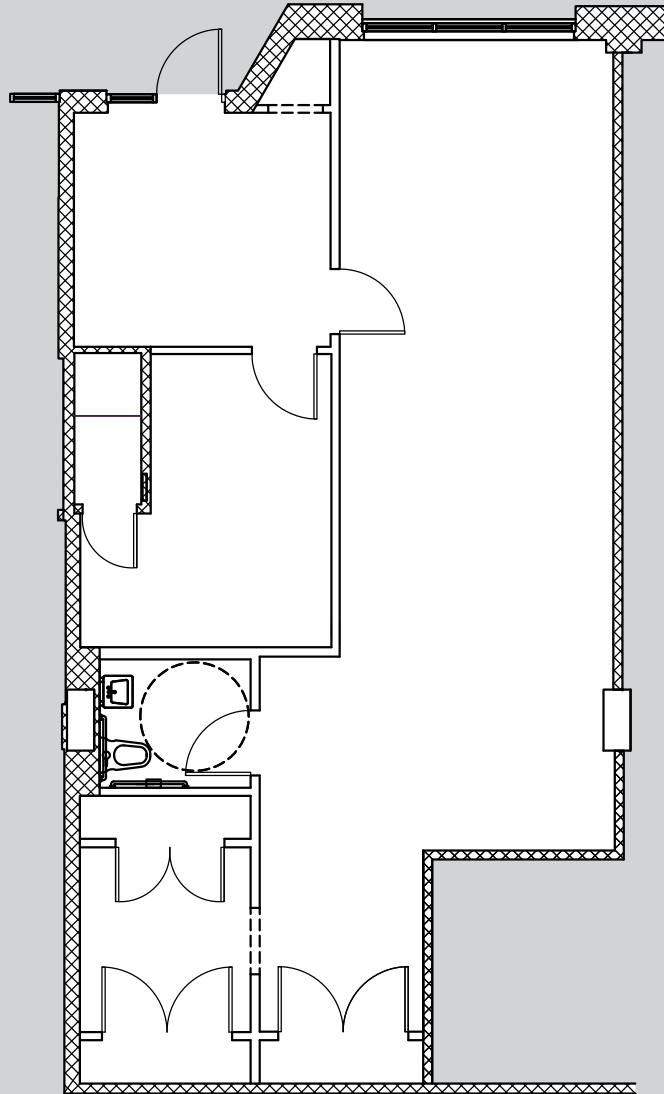
DAVID S. BROWN ENTERPRISES | 100 PAINTERS MILL ROAD, OWINGS MILLS, MD 21117 | 410.581.2520 | WWW.DAVIDSBROWN.COM |

# FOR LEASE

**B** BALTIMORE COUNTY, MD

# 3112 LORD BALTIMORE DR

EXECUTIVE PARK WEST | 3100-3300 LORD BALTIMORE DRIVE | WINDSOR MILL, MD 21244



.....  
**AVAILABLE**

▶ SUITE 106 - 1,126 SF

.....

**B** DAVID S. BROWN  
ENTERPRISES, LTD.

**KEVIN KEANE | SVP, OFFICE LEASING**  
☎ 410.581.2519 ✉ KEVIN@DAVIDSBROWN.COM

**BRENT MANGUM | VP, OFFICE LEASING**  
☎ 410.581.2518 ✉ BRENT@DAVIDSBROWN.COM

**RYAN BARRETT | LEASING ASSOCIATE**  
☎ 410.581.2521 ✉ RBARRETT@DAVIDSBROWN.COM

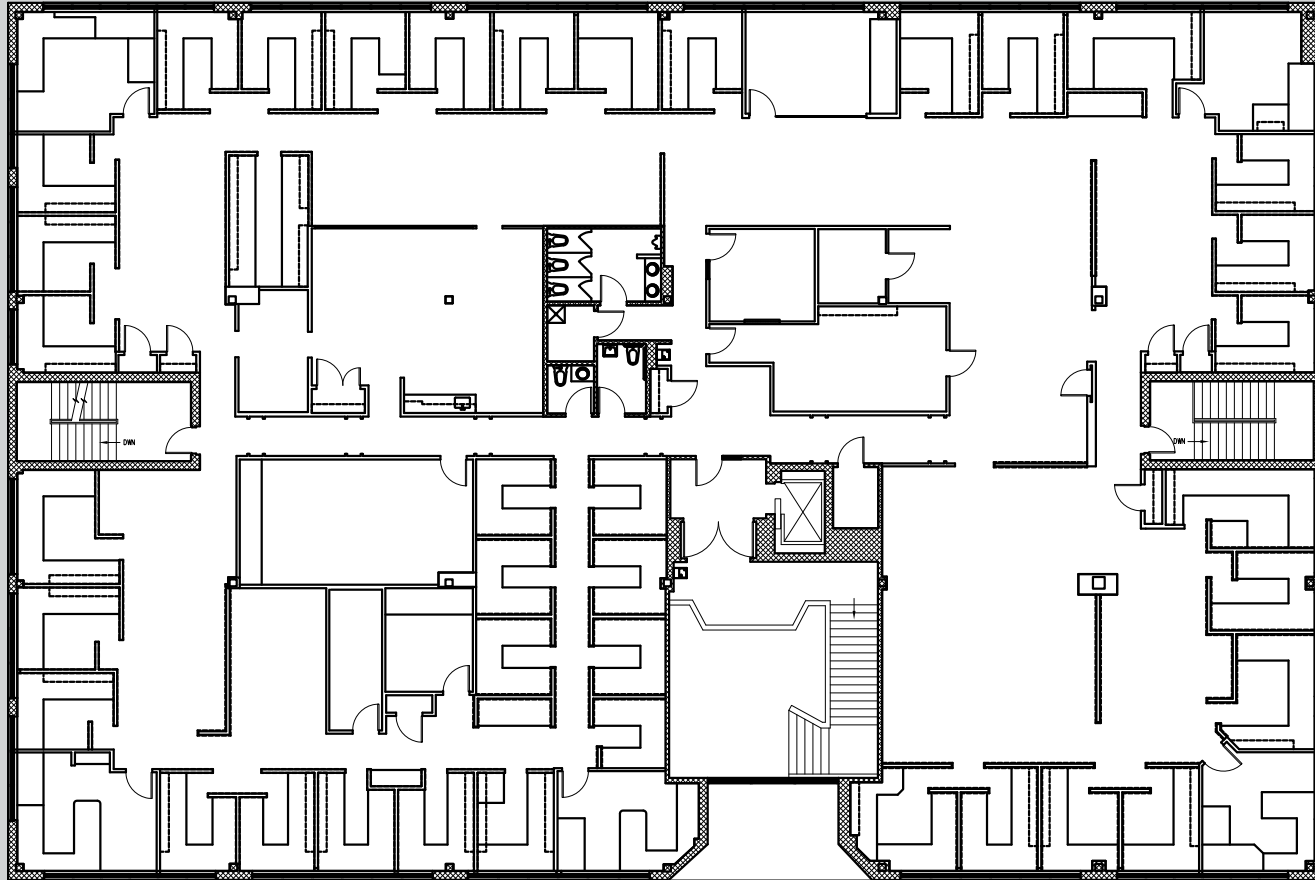
DAVID S. BROWN ENTERPRISES | 100 PAINTERS MILL ROAD, OWINGS MILLS, MD 21117 | 410.581.2520 | WWW.DAVIDSBROWN.COM |    

# FOR LEASE

**B** BALTIMORE COUNTY, MD

# 3112 LORD BALTIMORE DR

EXECUTIVE PARK WEST | 3100-3300 LORD BALTIMORE DRIVE | WINDSOR MILL, MD 21244



AVAILABLE

► SUITE 200 - 13,594 SF

**DAVID S. BROWN**  
ENTERPRISES, L.T.D.

**KEVIN KEANE | SVP, OFFICE LEASING**  
410.581.2519 | KEVIN@DAVIDSBROWN.COM

**BRENT MANGUM | VP, OFFICE LEASING**  
410.581.2518 | BRENT@DAVIDSBROWN.COM

**RYAN BARRETT | LEASING ASSOCIATE**  
410.581.2521 | RBARRETT@DAVIDSBROWN.COM

DAVID S. BROWN ENTERPRISES | 100 PAINTERS MILL ROAD, OWINGS MILLS, MD 21117 | 410.581.2520 | WWW.DAVIDSBROWN.COM |    

# 3112 LORD BALTIMORE DR

EXECUTIVE PARK WEST | 3100-3300 LORD BALTIMORE DRIVE | WINDSOR MILL, MD 21244

# MAP



## DISTANCE TO:

- CMS: 2.5 Miles
- SSA: 3.5 Miles
- BWI: 15 Miles
- I-695 & I-70 Interchange: 3 Miles